

District I  
P.O. Box 1980, Hobbs, NM 88241-1980

District II  
811 South First, Artesia, NM 88210

District III  
1000 Rio Brazos Rd., Aztec, NM 87410

District IV  
2040 South Pacheco, Santa Fe, NM 87505

State of New Mexico  
Energy, Minerals & Natural Resources Department

OIL CONSERVATION DIVISION  
2040 South Pacheco  
Santa Fe, NM 87505

Form C-101

Revised October 18, 1994

Instructions on back

Submit to Appropriate District Office

State Lease - 6 Copies

Fee Lease - 5 Copies

☐ AMENDED REPORT

APPLICATION FOR PERMIT TO DRILL, RE-ENTER, DEEPEN, PLUGBACK, OR ADD A ZONE

<sup>1</sup> Operator Name and Address Mewbourne Oil Company PO Box 5270 Hobbs, New Mexico 88241		<sup>2</sup> OGRID Number 14744
		<sup>3</sup> API Number 30 - 015 - 31970
<sup>4</sup> Property Code 28801	<sup>5</sup> Property Name Remington 18 State Com	<sup>6</sup> Well No. 1

Surface Location

UL or lot no.	Section	Township	Range	Lot Idn	Feet from the	North/South line	Feet from the	East/West Line	County
J	18	19S	28E		1980	S	1980	E	Eddy

Proposed Bottom Hole Location If Different From Surface

UL or lot no.	Section	Township	Range	Lot Idn	Feet from the	North/South line
<sup>9</sup> Proposed Pool 1 S. Millman Morrow						

CEMENT TO COVER ALL OIL, GAS &  
WATER BEARING ZONES

<sup>11</sup> Work Type Code N	<sup>12</sup> Well Type Code G	<sup>13</sup> Cable/Rotary R	<sup>14</sup> Lease Type Code S	<sup>15</sup> Ground Level Elevation 3520
<sup>16</sup> Multiple	<sup>17</sup> Proposed Depth 11200	<sup>18</sup> Formation Morrow	<sup>19</sup> Contractor TBA	<sup>20</sup> Spud Date 09-10-01

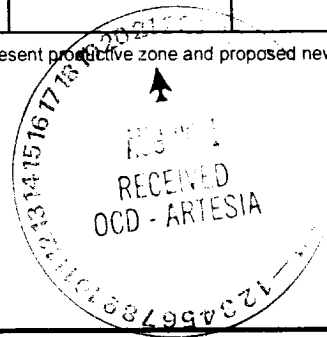
Proposed Casing and Cement Program

Hole Size	Casing Size	Casing weight/foot	Setting Depth	Sacks of Cement	Estimated TOC
17 1/2"	13 3/8"	48# H-40	450	450 sks	Surface
12 1/4"	8 5/8"	32# J-55	3000	800 sks	Surface
7 7/8"	5 1/2"	17# N & S	11200	400 sks	Above Wolfcamp

<sup>22</sup>Describe the proposed program. If this application is to DEEPEN or PLUG BACK give the data on the present productive zone and proposed new productive zone. Describe the blowout prevention program, if any. Use additional sheets if necessary.

0-450' Drill w/ FW & spud mud.  
450-3000' Drill w/ FW & go to brine & mud.  
3000-10,000' Drill w/ cut brine. Sweep when needed.  
10,000-TD Drill w/ cut brine & mud.

BOP diagram's attached.



<sup>23</sup>I hereby certify that the information given above is true and complete to the best of my knowledge and belief.

Signature:

Printed name: N.M. Young

Title: District Manager

OIL CONSERVATION DIVISION

Approved By:

ORIGINAL SIGNED BY TIM W. GUM  
DISTRICT II SUPERVISOR

Title:

Approval Date:

AUG 27 2001

Expiration Date:

AUG 27 2002

DISTRICT I  
1626 N. French Dr., Hobbs, NM 88240

DISTRICT II  
811 South First, Artesia, NM 88210

DISTRICT III  
1000 Rio Brazos Rd., Artesia, NM 87410

DISTRICT IV  
2040 South Pacheco, Santa Fe, NM 87505

State of New Mexico  
Energy, Minerals and Natural Resources Department

Form C-102  
Revised March 17, 1999  
Instruction on back  
Submit to Appropriate District Office  
State Lease - 4 Copies  
Fee Lease - 3 Copies

OIL CONSERVATION DIVISION

P.O. Box 2088  
Santa Fe, New Mexico 87504-2088

☐ AMENDED REPORT

WELL LOCATION AND ACREAGE DEDICATION PLAT

API Number	Pool Code	Pool Name
		S. Millman Morrow
Property Code	Property Name	Well Number
	REMINGTON "18" STATE COM.	1
OGRID No.	Operator Name	Elevation
14744	MEWBOURNE OIL COMPANY	3520

Surface Location

UL or lot No.	Section	Township	Range	Lot Idn	Feet from the	North/South line	Feet from the	East/West line	County
J	18	19S	28E		1980	SOUTH	1980	EAST	EDDY

Bottom Hole Location If Different From Surface

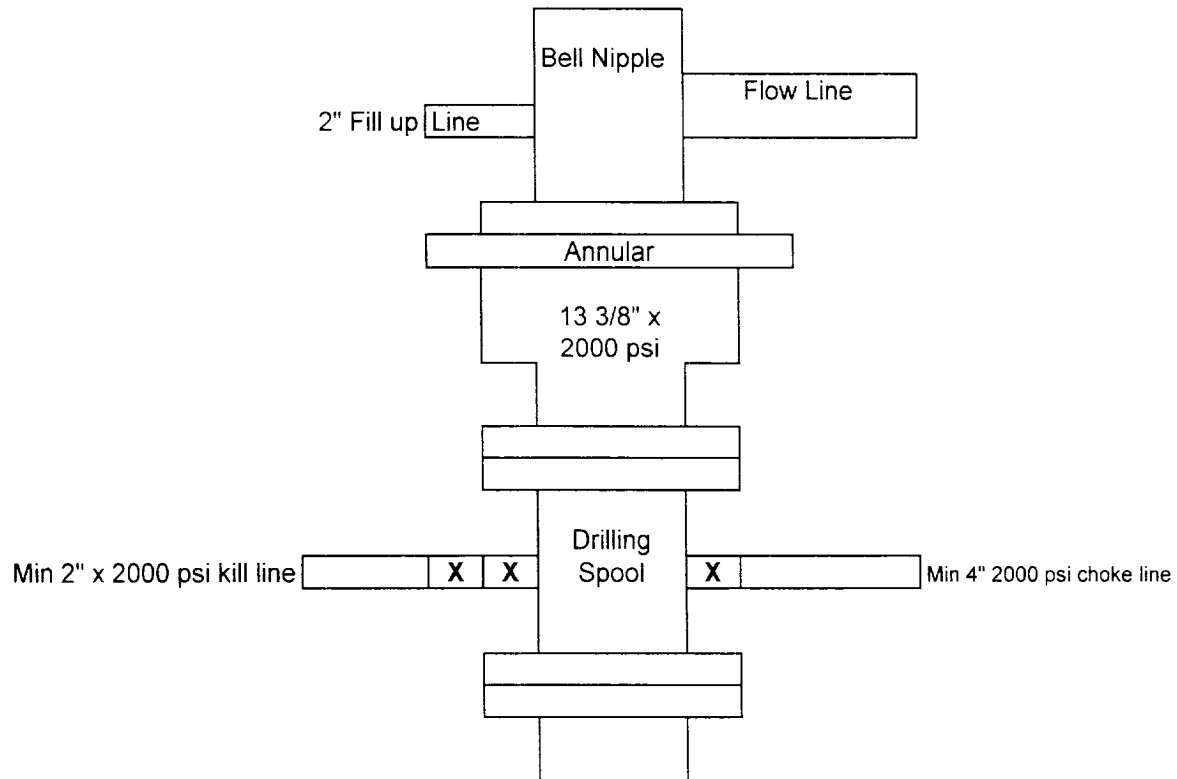
UL or lot No.	Section	Township	Range	Lot Idn	Feet from the	North/South line	Feet from the	East/West line	County
Dedicated Acres	Joint or Infill	Consolidation Code	Order No.						
320									

NO ALLOWABLE WILL BE ASSIGNED TO THIS COMPLETION UNTIL ALL INTERESTS HAVE BEEN CONSOLIDATED  
OR A NON-STANDARD UNIT HAS BEEN APPROVED BY THE DIVISION

	<b>OPERATOR CERTIFICATION</b>  I hereby certify that the information contained herein is true and complete to the best of my knowledge and belief.   Signature N.M. Young Printed Name District Manager Title Aug., 21, 2001 Date
	<b>SURVEYOR CERTIFICATION</b>  I hereby certify that the well location shown on this plat was plotted from field notes of actual surveys made by me or under my supervision, and that the same is true and correct to the best of my belief.  7/17/2001 Date Surveyed Signature Professional Surveyor Certificate No. 3648 Jones RLS 3640 REMINGTON LAND SURVEYING COMPANY

# Mewbourne Oil Company

BOP Schematic for  
12 1/4" Hole



Remington 18 State Com #1  
1980'FSL & 1980'FEL  
Sec.18 T-19S R-28E  
Eddy, County New Mexico

# Mewbourne Oil Company

BOP Scematic for  
8 3/4" or 7 7/8" Hole

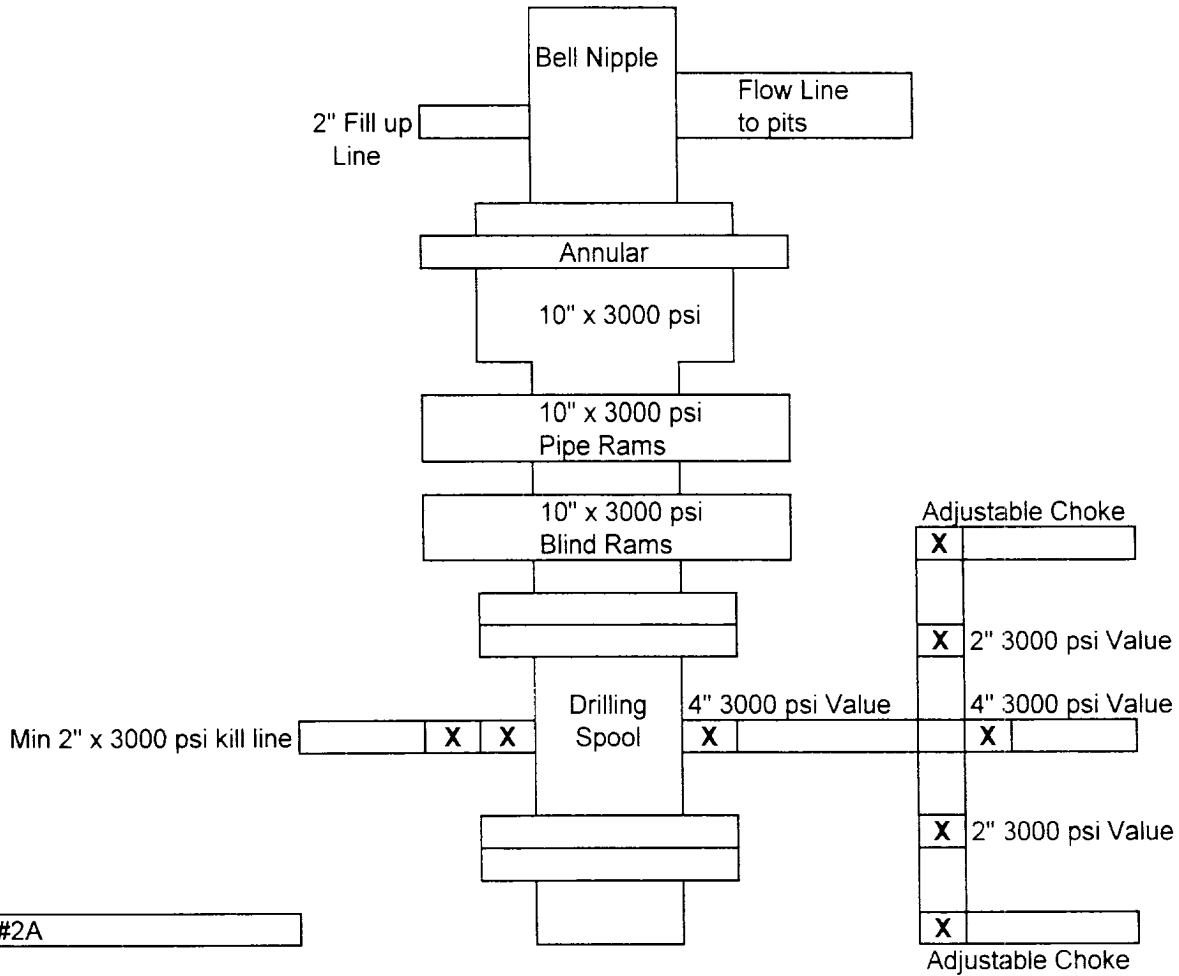
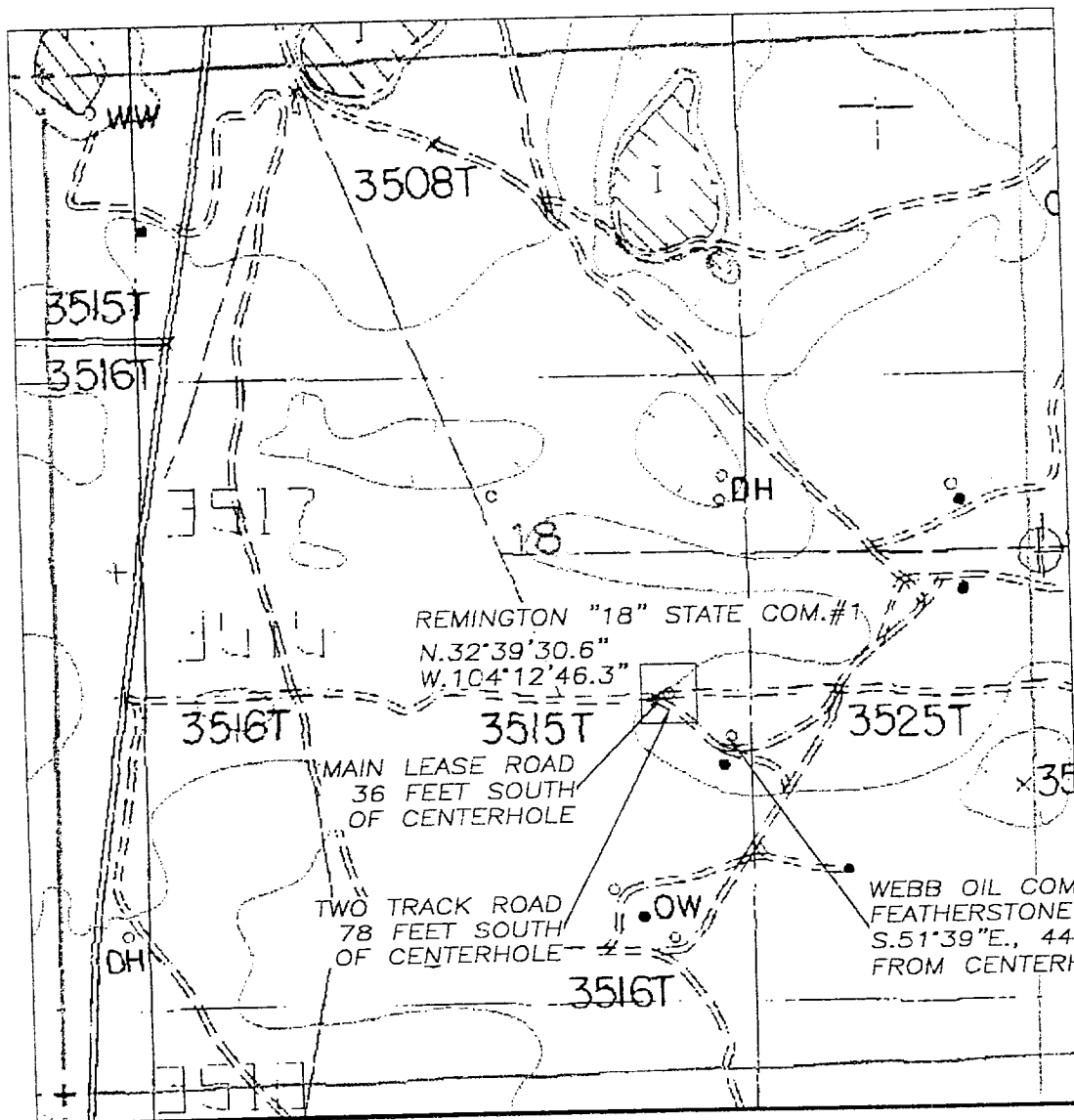


Exhibit #2A

Remington 18 State Com #1  
1980' FSL & 1980' FEL  
Sec.18 T-19S R-28E  
Eddy, County New Mexico

SECTION 18, TOWNSHIP 19 SOUTH, RANGE 28 EAST, NMPM, EDDY COUNTY, NEW MEXICO.



1000' 0 1000' 2000'  
Scale 1" = 1000'

THE PREPARATION OF THIS PLAN AND THE PERFORMANCE OF THE SURVEY UPON WHICH IT IS BASED WERE DONE UNDER MY DIRECTION AND THIS PLAN ACCURATELY DEPICTS THE RESULTS OF SAID SURVEY AND MEET THE REQUIREMENTS OF THE STANDARDS FOR LAND SURVEYS IN NEW MEXICO AS ADOPTED BY THE NEW MEXICO STATE BOARD OF REGISTRATION FOR PROFESSIONAL ENGINEERS AND LAND SURVEYORS.

HERSCHEL L. JONES, P.L.S. No. 3640

GENERAL SURVEYING COMPANY P.O. BOX 1928  
LOVINGTON, NEW MEXICO 88260

MEWBOURNE OIL COMPANY

LEASE ROAD TO ACCESS THE MEWBOURNE OIL COMPANY REMINGTON "18" STATE COM. #1 WELL LOCATED IN SECTION 18, TOWNSHIP 19 SOUTH, RANGE 28 EAST, NMPM, EDDY COUNTY, NEW MEXICO.

Survey Date: 7/17/2001	Sheet 1 of 1 Sheets
Drawn By: Ed Blevins	W.O. Number
Date: 7/17/01	Scale 1" = 1000' REMINGTON