

FIGURE K6-1. The schematic sketch of an accumulator system shows required and optional components.

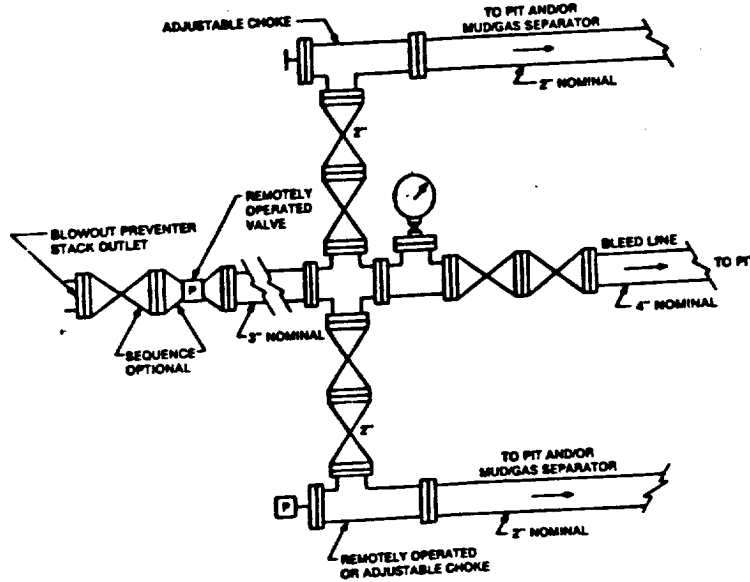


FIGURE K4-2. Typical choke manifold assembly for 5M rated working pressure service — surface installation.

EXHIBIT "1-E"
CHOKE MANIFOLD & CLOSING UNIT

PENWELL ENERGY INC.
WEST SHUGART "30" FEDERAL # 9
1980' FSL & 1908' FWL SEC. 30
T18S-R31E EDDY CO. NM