

District I
 PO Box 1980, Hobbs, NM 88241-1980
 District II
 PO Drawer DD, Artesia, NM 88211-0719
 District III
 1000 Rio Brazos Rd., Aztec, NM 87410
 District IV
 PO Box 2088, Santa Fe, NM 87504-2088

State of New Mexico
 Geological, Minerals & Natural Resources Department

Form C-101
 Revised February 21, 1994
 Instructions on back
 Submit to Appropriate District Office
 State Lease - 6 Copies
 Fee Lease - 5 Copies

OIL CONSERVATION DIVISION
 PO Box 2088
 Santa Fe, NM 87504-2088

AMENDED REPORT

1/97
 BLM
 SV
 OP

APPLICATION FOR PERMIT TO DRILL, RE-ENTER, DEEPEN, PLUGBACK, OR ADD A ZONE

Operator Name and Address. SDX RESOURCES, INC. P. O. BOX 5061 MIDLAND, TX 79704		OGRID Number 020451
Property Code 015786		Property Name CONOCO 7 STATE
Well No. 20		API Number 30-015-29438

RECEIVED
 MAR 07 1997
 OIL CON. DIV.

UL or lot no.	Section	Township	Range	Lot Ida	Feet from the	North/South line	Feet from the	East/West line	County
1	7	19S	29E	1	1310	NORTH	1080	WEST	EDDY

UL or lot no.	Section	Township	Range	Lot Ida	Feet from the	North/South line	Feet from the	East/West line	County
Proposed Pool 1 MILLMAN-QN-GR-SA, EAST (46555)					Proposed Pool 2				

Work Type Code N	Well Type Code 0	Cable/Rotary Rotary	Lease Type Code S	Ground Level Elevation 3378'
Multiple NO	Proposed Depth 3100	Formation QN-GR-SA	Contractor United Drlg Co.	Spud Date 4/08/97

Hole Size	Casing Size	Casing weight/foot	Setting Depth	Sacks of Cement	Estimated TOC
12-1/4"	8-5/8"	24#	350'	350 sxs Cl C	SURF
7-7/8"	5-1/2"	14#	3100'	350 sxs POZ + 400 sxs Lite	SURF

Describe the proposed program. If this application is to DEEPEN or PLUG BACK give the data on the present productive zone and proposed new productive zone. Describe the blowout prevention program, if any. Use additional sheets if necessary.

Plan to drill a 12-1/4" hole to approximately 350' and set 8-5/8" surface casing. @ 350'. Circulate Class "C" cement. Drill 7-7/8" hole to total depth of 3100'. Run open hole logs. Run 5-1/2" casing and circulate cement. Perforate the QN-GR-SA and stimulate as necessary for optimum production.

Permitted as a standard location in State 7 Leasehold Waterflood Project (R-10589) as per OCD Order No. R 10533.

Posted ID-1
 NL or API
 3-14-97

I hereby certify that the information given above is true and complete to the best of my knowledge and belief.		OIL CONSERVATION DIVISION	
Signature: <i>Janice Courtney</i>	Printed name: JANICE COURTNEY	Approval Date: 3-10-97	Expiration Date: 3-10-98
Title: REGULATORY TECH	Date: 3/06/97	Approved by: <i>Signe W. Beem</i>	Conditions of Approval: Attached <input type="checkbox"/>
	Phone: 915/685-1761	Title: District Supervisor	



LTR



Job separation sheet

DISTRICT I
P.O. Box 1980, Hobbs, NM 88241-1980

State of New Mexico

Energy, Minerals and Natural Resources Department

Form C-102
Revised February 10, 1994
Submit to Appropriate District Office
State Lease - 4 Copies
Fee Lease - 3 Copies

DISTRICT II
P.O. Drawer DD, Artesia, NM 88211-0719

OIL CONSERVATION DIVISION

DISTRICT III
1000 Rio Brazos Rd., Aztec, NM 87410

P.O. Box 2088

Santa Fe, New Mexico 87504-2088

AMENDED REPORT

DISTRICT IV
P.O. Box 2088, Santa Fe, NM 87504-2088

WELL LOCATION AND ACREAGE DEDICATION PLAT

API Number 30-015-29438		Pool Code 46555	Pool Name MILLMAN-QN-GR-SA, EAST
Property Code 015786	Property Name CONOCO 7 STATE		Well Number 20
OGRID No. 020451	Operator Name SDX RESOURCES, INC.		Elevation 3378

Surface Location

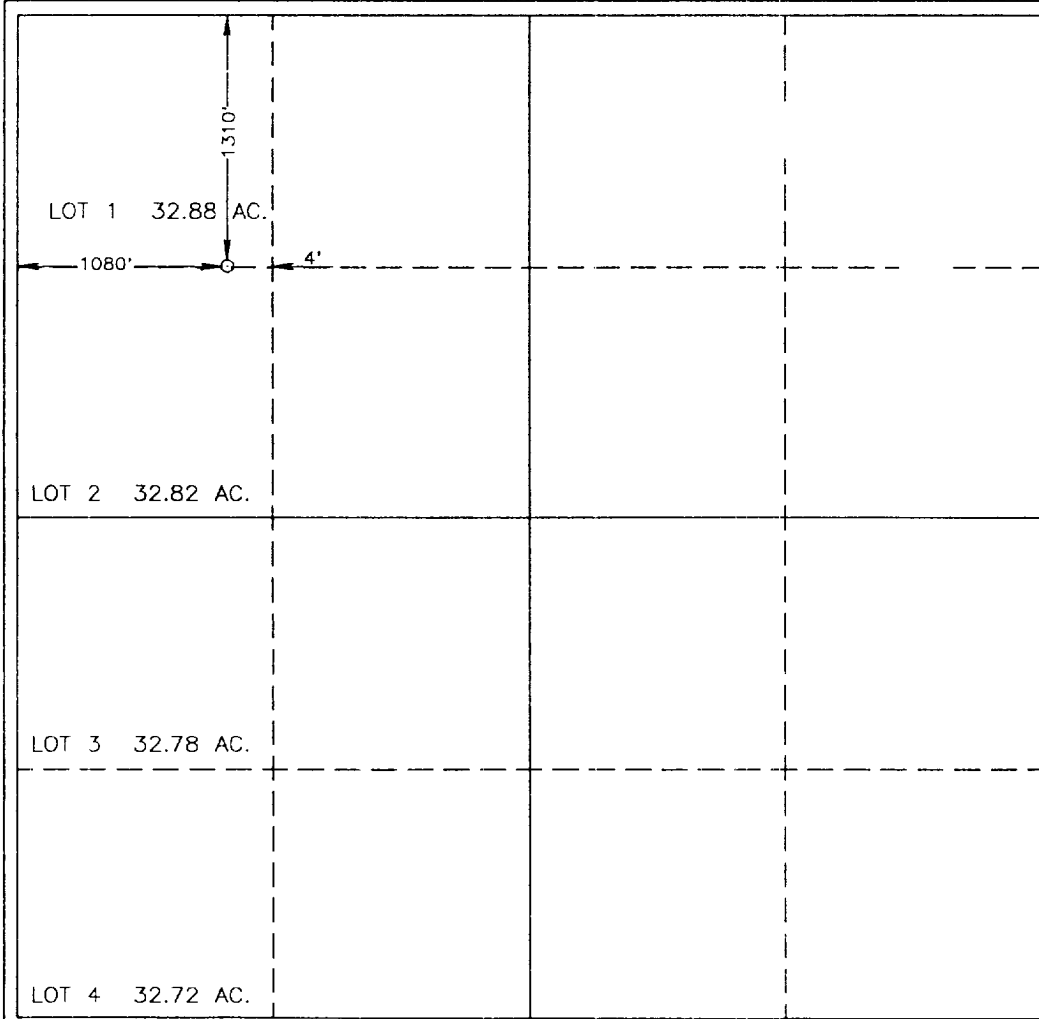
UL or lot No.	Section	Township	Range	Lot Idn	Feet from the	North/South line	Feet from the	East/West line	County
1	7	19 S	29 E		1310	NORTH	1080	WEST	EDDY

Bottom Hole Location If Different From Surface

UL or lot No.	Section	Township	Range	Lot Idn	Feet from the	North/South line	Feet from the	East/West line	County

Dedicated Acres 40	Joint or Infill	Consolidation Code	Order No.
-----------------------	-----------------	--------------------	-----------

NO ALLOWABLE WILL BE ASSIGNED TO THIS COMPLETION UNTIL ALL INTERESTS HAVE BEEN CONSOLIDATED OR A NON-STANDARD UNIT HAS BEEN APPROVED BY THE DIVISION



OPERATOR CERTIFICATION

I hereby certify the the information contained herein is true and complete to the best of my knowledge and belief.

Janice Courtney
Signature
Janice Courtney
Printed Name
Regulatory Tech
Title
3/6/97
Date

SURVEYOR CERTIFICATION

I hereby certify that the well location shown on this plat was plotted from field notes of actual surveys made by me or under my supervision, and that the same is true and correct to the best of my belief.

MARCH 3, 1997
Date Surveyed JLP

Ronald J. Eidson
Signature & Seal of Professional Surveyor
NEW MEXICO
5-0497
P.W.O. Num. 87-140405

Certificate No. JOHN W. WEST, 676
RONALD J. EIDSON, 3239
R. EIDSON, 12841