

District I  
1625 N. French Dr., Hobbs, NM 88240  
District II  
811 South First, Artesia, NM 88210  
District III  
1000 Rio Brazos Road, Aztec, NM 87410  
District IV  
2040 South Pacheco, Santa Fe, NM 87505

State of New Mexico  
Energy Minerals and Natural Resources

Oil Conservation Division  
2040 South Pacheco  
Santa Fe, NM 87505

Form C-101  
Revised March 17, 1999

Submit to appropriate District Office  
State Lease - 6 Copies  
Fee Lease - 5 Copies



☐ AMENDED REPORT

APPLICATION FOR PERMIT TO DRILL, RE-ENTER, DEEPEN, PLUG BACK, OR ADD A ZONE

<sup>1</sup> Operator Name and Address OXY USA Inc. P.O. Box 50250 Midland, TX 79710-0250		<sup>2</sup> OGRID Number 16696 <sup>3</sup> API Number 30-015- 30161
<sup>3</sup> Property Code 23067	<sup>5</sup> Property Name OXY Wild Boar State	<sup>6</sup> Well No. 1

<sup>7</sup> Surface Location

UL or lot no.	Section	Township	Range	Lot Idn	Feet from the	North/South line	Feet from the	East/West line	County
J	4	19S	29E		1650	South	1980	East	Eddy

<sup>8</sup> Proposed Bottom Hole Location If Different From Surface

UL or lot no.	Section	Township	Range	Lot Idn	Feet from the	North/South line	Feet from the	East/West line	County

<sup>9</sup> Proposed Pool 1 Turkey Track Morrow, North	<sup>10</sup> Proposed Pool 2 86500
--	--

<sup>11</sup> Work Type Code N	<sup>12</sup> Well Type Code G	<sup>13</sup> Cable/Rotary R	<sup>14</sup> Lease Type Code S	<sup>15</sup> Ground Level Elevation 3412'
<sup>16</sup> Multiple No	<sup>17</sup> Proposed Depth 11400'	<sup>18</sup> Formation Morrow	<sup>19</sup> Contractor FWA-Peterson	<sup>20</sup> Spud Date 8/10/99

**Minimum WOC time / 8 hrs. Proposed Casing and Cement Program**

Hole Size	Casing Size	Casing weight/foot	Setting Depth	Sacks of Cement	Estimated TOC
17-1/2"	13-3/8"	48#	400'	420sx	Surface
11"	8-5/8"	24-32#	3000'	980sx	Surface
7-7/8"	4-1/2"	11.6#	11400'	510sx	8500'

22 Describe the proposed program. If this application is to DEEPEN or PLUG BACK, give the data on the present productive zone and proposed new productive zone. Describe the blowout prevention program, if any. Use additional sheets if necessary.

The State CZ (8650) will be Shut-In & plugged back if this well is successful in the Morrow. This well was originally permitted & approved 3/16/98 and expired 3/16/99.

SEE OTHER SIDE

23 I hereby certify that the information given above is true and complete to the best of my knowledge and belief.

Signature:

Printed name: David Stewart

Title: Regulatory Analyst

Date: 8/4/99

Phone: 915-685-5717

OIL CONSERVATION DIVISION

Approved by:

ORIGINAL SIGNED BY TIM W. GUM  
DISTRICT II SUPERVISOR

86X

Title:

Approval Date: 8-9-99

Expiration Date: 8-9-00

Conditions of Approval:

Attached ☐

ATTACHMENT C-101  
OXY USA Inc.  
OXY WILD BOAR STATE #1  
SEC 4 T19S R29E  
Eddy County, NM

PROPOSED TD: 11400' TVD

BOP PROGRAM: 0' - 400' None  
400'-3000' 13-3/8" 5M blind and pipe rams with 5M annular preventer.  
3000'-11400' 13-3/8" 5M blind and pipe rams with 5M annular preventer and rotating head below 8500'.

CASING: 13-3/8" 48# H40 ST&C casing @ 400'. 17-1/2" hole.  
8-5/8" 24-32# K55 ST&C casing @ 3000', 11" hole  
4-1/2" 11.6# N80-S95 LT&C casing @ 11400', 7-7/8" hole.

CEMENT: Surface - Circulate cement with 220sx 65/35 POZ/C w/2% CaCl<sub>2</sub> + 6% gel + .25#/sx Cello-seal followed by 200sx Class C with 2% CaCl<sub>2</sub>.  
Intermediate - Circulate cement with 780sx POZ/C w/ 6% gel + 5#/sx salt + .25#/sx Cello-seal followed by 200sx Class C with 2% CaCl<sub>2</sub>. Cement volumes may be adjusted to fluid caliper.  
Production - Cement with 435sx 15:61:11 POZ/C/CSE with .005#/sx Static Free + .005gps FP-6L + .5% FL-52 + .5% FL-25 + 8#/sx Gilsonite followed by 75sx Cl C with .005#/sx Static Free + .005gps FP-6L + .7% FL-25. Estimated top of cement is 8500'. Cement volumes may be adjusted to hole caliper.

17: 0' - 400' Fresh water/native mud. Lime for pH control (9 to 10). Paper for seepage. Wt. 8.6-8.7 ppg, vis 32-34 sec.  
400' - 3000' Fresh/Brine water. Lime for pH control (10-10.7). Paper for seepage. Wt. 10-10.1 ppg, vis 28-32 sec  
3000' - 8800' Fresh water. Lime for pH control (9-9.5). Paper for seepage. Wt. 8.4-8.5 ppg, vis 28-29 sec  
8800' - 10100' Cut brine. Lime for pH control (10-10.5). Wt. 8.8-9.0 ppg, vis 28-29 sec  
10100' - 11400' Mud up with an Duo Vis/Flo Trol mud system. Wt. 9.5-10.5 ppg, vis 42-48 sec WL 6-8cc.

DISTRICT I  
P.O. Box 1980, Hobbs, NM 88240

DISTRICT II  
P.O. Drawer DD, Artesia, NM 88210

DISTRICT III  
1000 Rio Brazos Rd., Aztec, NM 87410

State of New Mexico  
Energy, Minerals and Natural Resources Department

Form C-102  
Revised February 10, 1994  
Instruction on back  
Submit to Appropriate District Office  
State Lease - 4 Copies  
Fee Lease - 3 Copies

OIL CONSERVATION DIVISION  
P.O. Box 2088  
Santa Fe, New Mexico 87504-2088

☐ AMENDED REPORT

WELL LOCATION AND ACREAGE DEDICATION PLAT

API Number 30-015-30161	Pool Code 86500	Pool Name Turkey Track Morrow, North
Property Code 23067	Property Name OXY WILD BOAR STATE	Well Number 1
OGRID No. 16696	Operator Name OXY USA INC.	Elevation 3412'

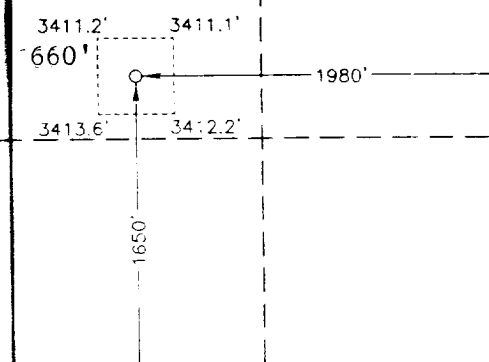
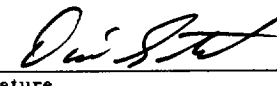
Surface Location

UL or lot No. J	Section 4	Township 19 S	Range 29 E	Lot Idn	Feet from the 1650	North/South line SOUTH	Feet from the 1980	East/West line EAST	County EDDY
--------------------	--------------	------------------	---------------	---------	-----------------------	---------------------------	-----------------------	------------------------	----------------

Bottom Hole Location If Different From Surface

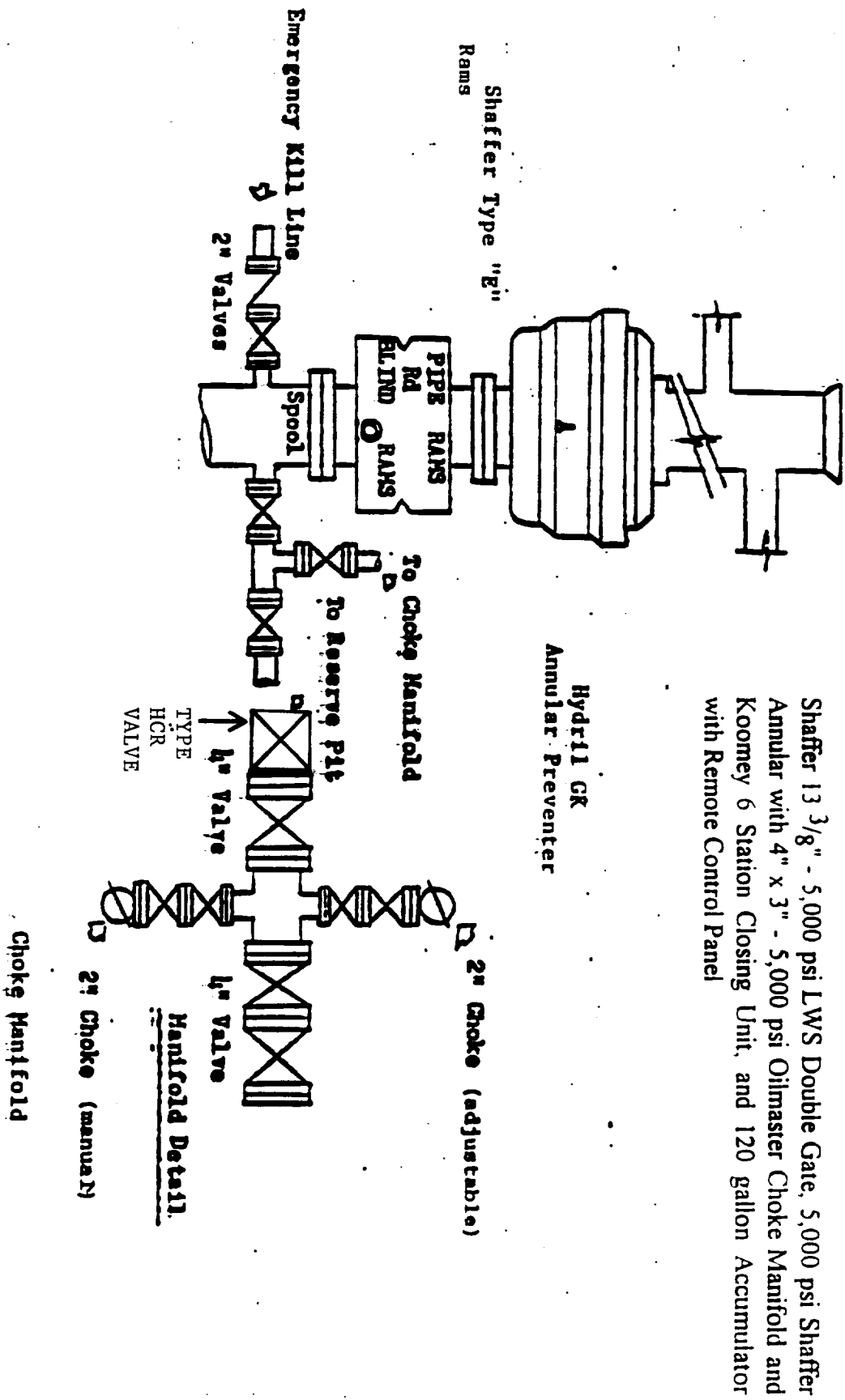
UL or lot No.	Section	Township	Range	Lot Idn	Feet from the	North/South line	Feet from the	East/West line	County
Dedicated Acres 320.95	Joint or Infill N	Consolidation Code	Order No.						

NO ALLOWABLE WILL BE ASSIGNED TO THIS COMPLETION UNTIL ALL INTERESTS HAVE BEEN CONSOLIDATED  
OR A NON-STANDARD UNIT HAS BEEN APPROVED BY THE DIVISION

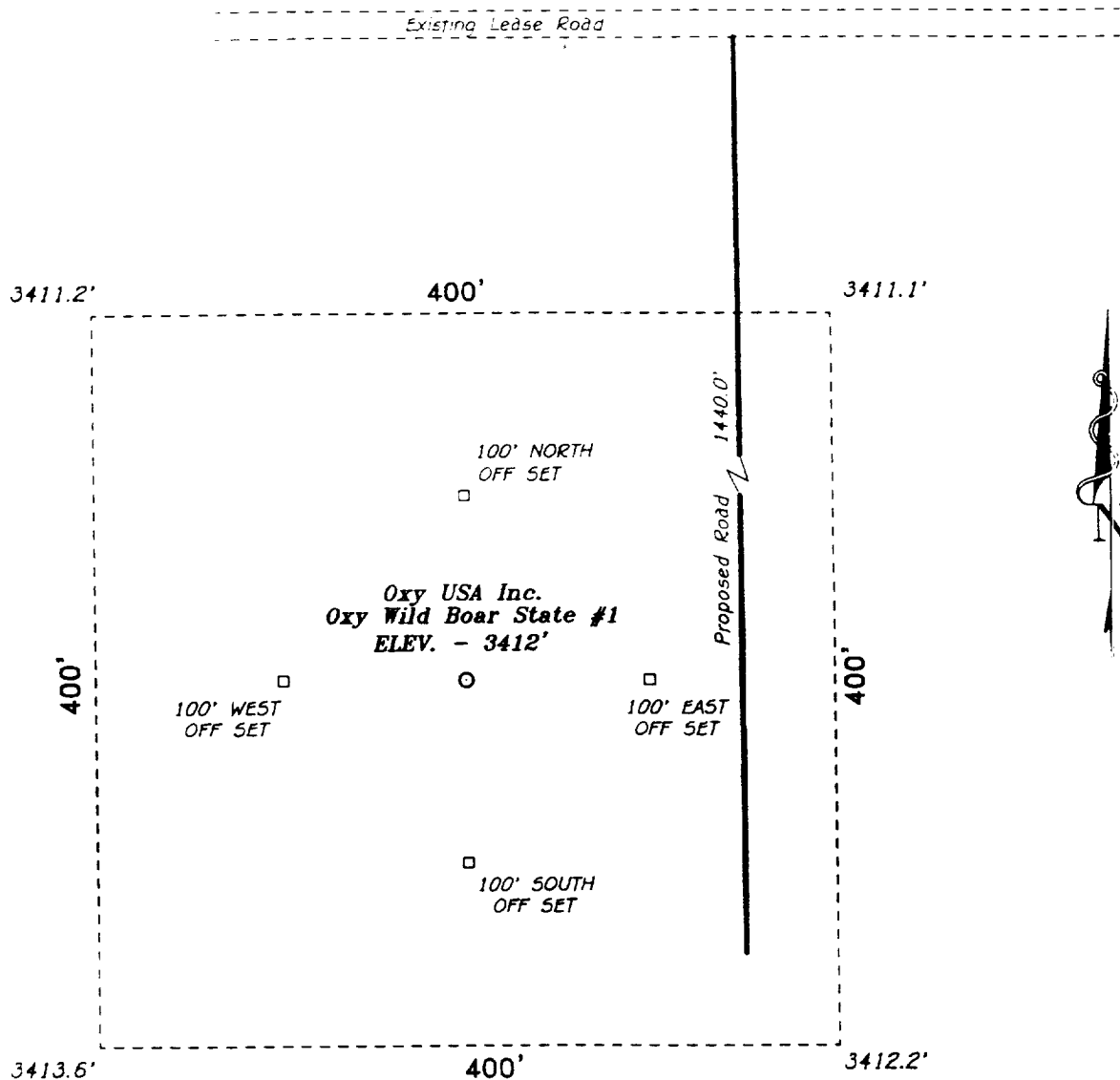
LOT 4 - 40.6 ACRES	LOT 4 - 40.59 ACRES	LOT 2 - 40.51 ACRES	LOT 1 - 40.44 ACRES
State CZ-1			
			
<b>OPERATOR CERTIFICATION</b> I hereby certify the the information contained herein is true and complete to the best of my knowledge and belief.  Signature David Stewart Printed Name Regulatory Analyst Title 01/4/99 Date			
<b>SURVEYOR CERTIFICATION</b> I hereby certify that the well location shown on this plat was plotted from field notes of actual surveys made by me or under my supervision, and that the same is true and correct to the best of my belief. March 4, 1998 Date Surveyed GARY L. JONES Signature & Seal of Professional Surveyor 7977 No. 8124 Certificate No. 7977 BASIN SURVEYS			

# BLOWOUT PREVENTOR SCHEME

EXHIBIT A



SECTION 4, TOWNSHIP 19 SOUTH, RANGE 29 EAST, N.M.P.M.,  
EDDY COUNTY, NEW MEXICO.



**Oxy USA Inc.**

REF: Oxy Wild Boar State No. 1 / Well Pad Topo

THE OXY WILD BOAR STATE No. 1 LOCATED 1650' FROM THE  
SOUTH LINE AND 1980' FROM THE EAST LINE OF  
SECTION 4, TOWNSHIP 19 SOUTH, RANGE 29 EAST,  
N.M.P.M., EDDY COUNTY, NEW MEXICO.

**BASIN SURVEYS** P.O. BOX 1756-HOBBS, NEW MEXICO

W.G. Number: 8124

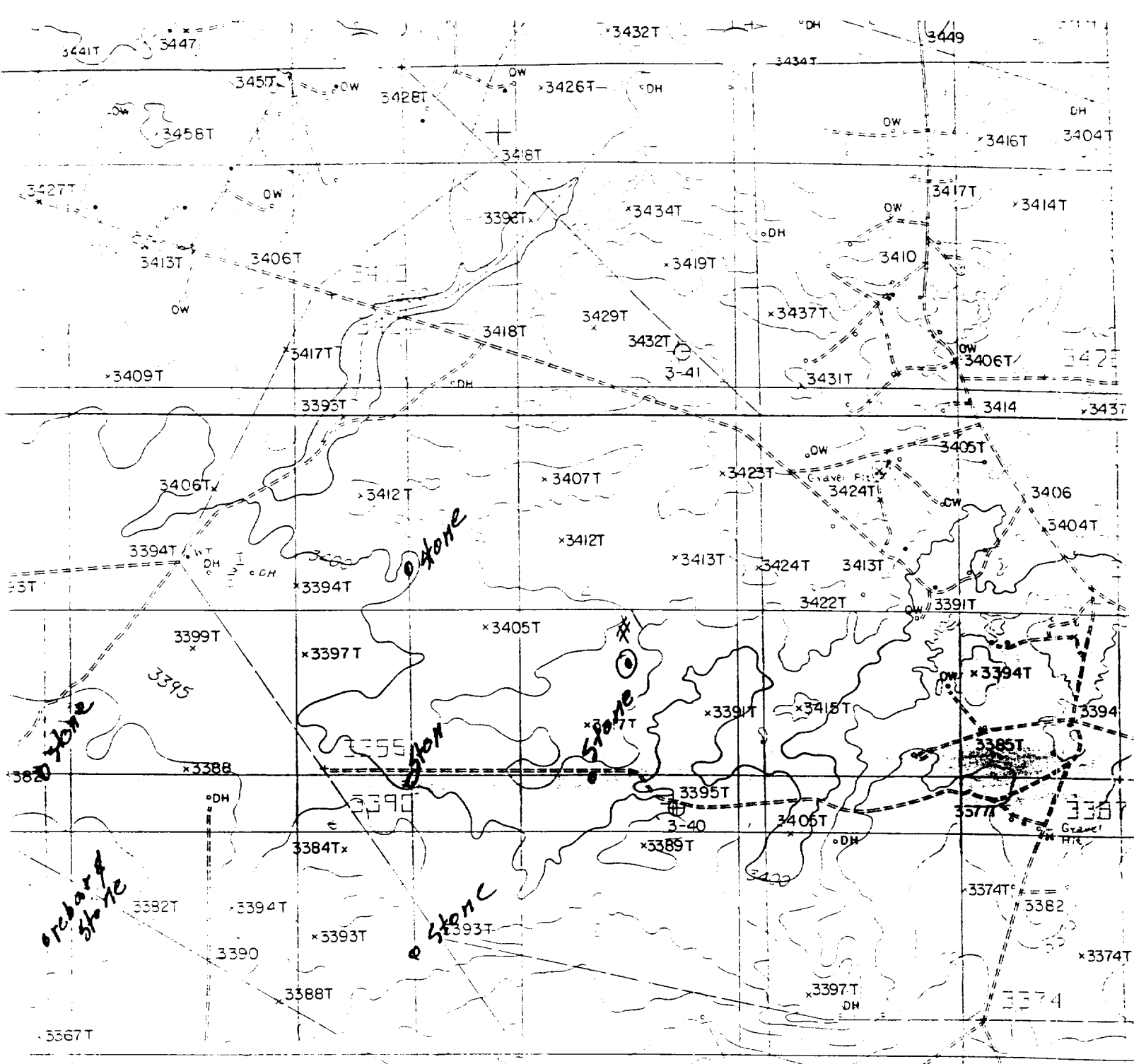
Drawn By: K. GOAD

Date: 03-06-98

Disk: WUG #96 - 8124A.DWG

Survey Date: 03-04-98

Sheet 1 of 1 Sheets



OXY USA INC.  
 OXY WILD BOAR STATE #1  
 1650' FSL & 1980' FEL  
 Sec. 4, T-19-S, R-29-E,  
 Eddy County, New Mexico.

SCALE: 1"=2000'

**BASIN SURVEYS**

P.O. BOX 1786 - HOBBS, NEW MEXICO

2000' 0 2000' 4000 Feet

W.O. Number: 8124	Drawn By: K. GOAD	Survey Date: 03-04-98	Sheet 1 of 1 Sheets
-------------------	-------------------	-----------------------	---------------------