

DISTRICT I
P.O. Box 1990, Hobbs, NM 88241-1990

State of New Mexico

EXHIBIT "C"

Energy, Minerals and Natural Resources Department

Form C-102
Revised February 10, 1994
Submit to Appropriate District Office
State Lease - 4 Copies
Fee Lease - 3 Copies

DISTRICT II
P.O. Drawer DD, Artesia, NM 88211-0719

DISTRICT III
1000 Rio Brazos Rd., Aztec, NM 87410

DISTRICT IV
P.O. BOX 2088, SANTA FE, N.M. 87504-2088

OIL CONSERVATION DIVISION

P.O. Box 2088

Santa Fe, New Mexico 87504-2088

☐ AMENDED REPORT

WELL LOCATION AND ACREAGE DEDICATION PLAT

API Number 30-015	Pool Code 87600	Pool Name Winchester Morrow
Property Code	Property Name DERO FEDERAL	Well Number 3
OGRID No. 148967	Operator Name SAGA PETROLEUM LLC	Elevation 3303'

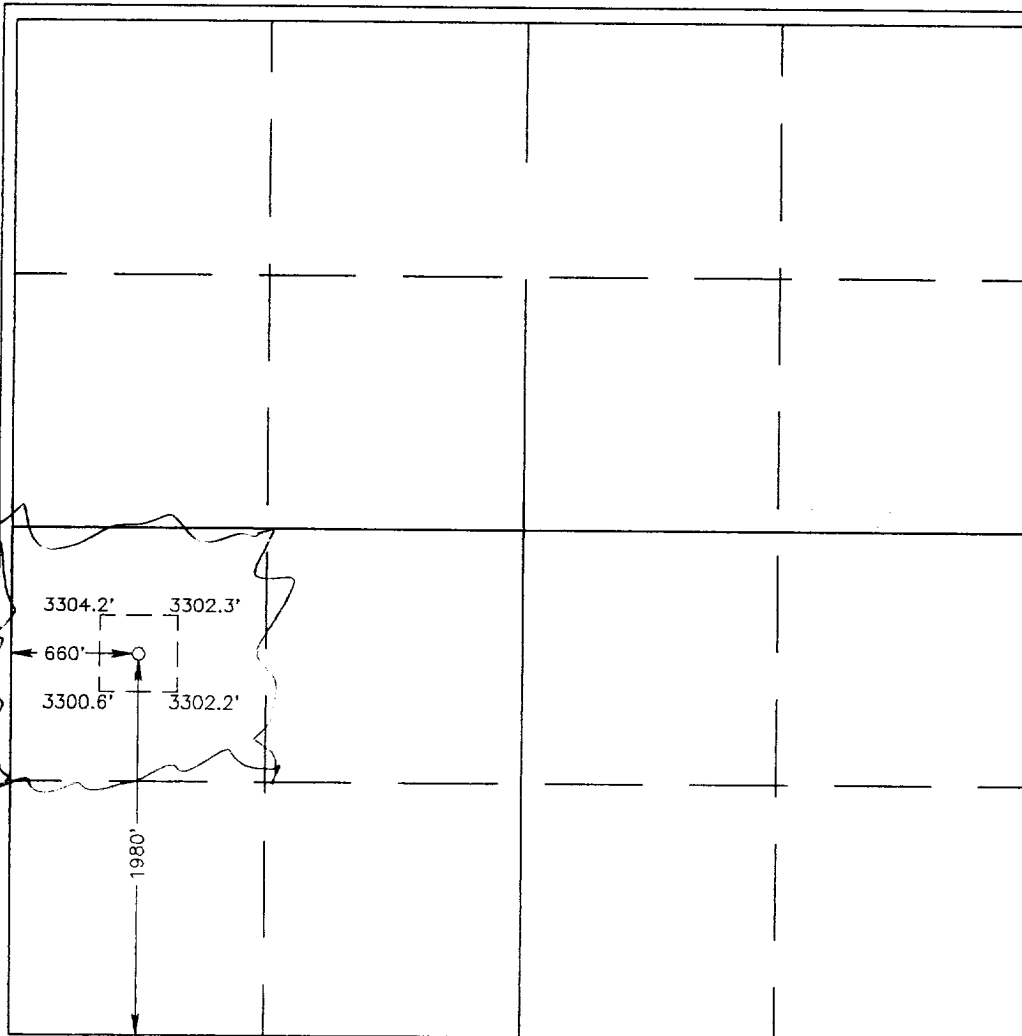
Surface Location

UL or lot No. L	Section 35	Township 19 S	Range 28 E	Lot Idn	Feet from the 1980	North/South line SOUTH	Feet from the 660	East/West line WEST	County EDDY
--------------------	---------------	------------------	---------------	---------	-----------------------	---------------------------	----------------------	------------------------	----------------

Bottom Hole Location If Different From Surface

UL or lot No.	Section	Township	Range	Lot Idn	Feet from the	North/South line	Feet from the	East/West line	County
Dedicated Acres 320	Joint or Infill	Consolidation Code	Order No.						

NO ALLOWABLE WILL BE ASSIGNED TO THIS COMPLETION UNTIL ALL INTERESTS HAVE BEEN CONSOLIDATED
OR A NON-STANDARD UNIT HAS BEEN APPROVED BY THE DIVISION



OPERATOR CERTIFICATION

I hereby certify the the information
contained heretn is true and complete to the
best of my knowledge and belief.

Michael R. Burck
Signature
MICHAEL R. BURCK
Printed Name
AGENT FOR SAGA
Title
3-5-98
Date

SURVEYOR CERTIFICATION

I hereby certify that the well location shown
on this plat was plotted from field notes of
actual surveys made by me or under my
supervision, and that the same is true and
correct to the best of my belief.

MARCH, 5 1998

Date Surveyed
Signature & Seal of
Professional Surveyor
RONALD C. EDSON
3-09-98
98-11-0400
Certificate No. RONALD C. EDSON 3239
GABRIEL EDSON 12641