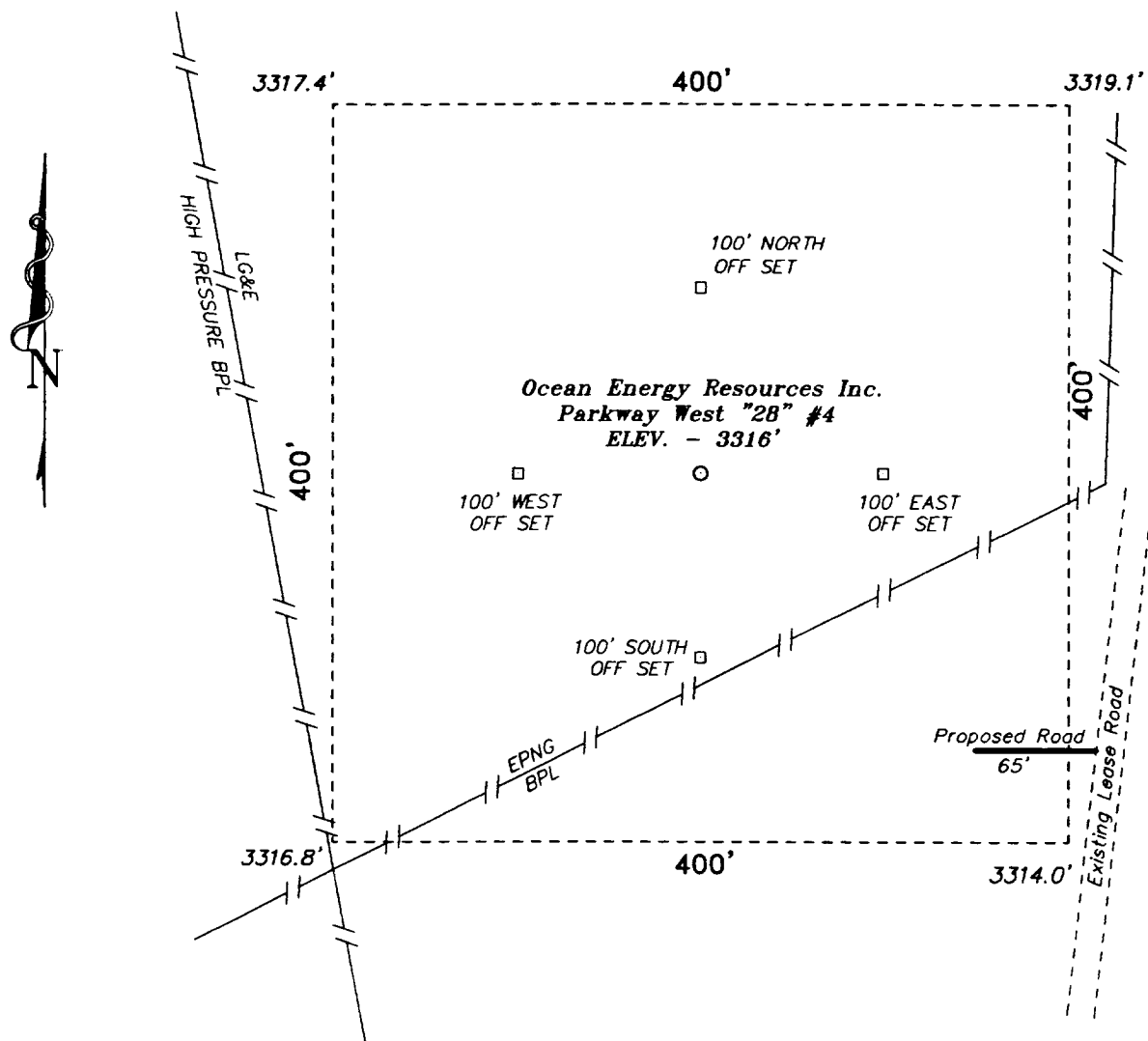


SECTION 28, TOWNSHIP 19 SOUTH, RANGE 29 EAST, N.M.P.M.,  
EDDY COUNTY, NEW MEXICO.



**Ocean Energy Resources Inc.**

REF: Parkway West "28" #4 / Well Pad Topo

THE PARKWAY WEST "28" No. 4 LOCATED 990' FROM THE  
NORTH LINE AND 1650' FROM THE WEST LINE OF  
SECTION 28, TOWNSHIP 19 SOUTH, RANGE 29 EAST,  
N.M.P.M., EDDY COUNTY, NEW MEXICO.

**BASIN SURVEYS** P.O. BOX 1786-HOBBS, NEW MEXICO

W.O. Number: 8376

Drawn By: K. GOAD

Date: 08-24-98

Disk: KJG #116 - 8376A.DWG

Survey Date: 08-21-98

Sheet 1 of 1 Sheets