

DISTRICT I  
P. O. Box 1980  
Hobbs, NM 88241-1980

DISTRICT II  
P. O. Drawer DD  
Artesia, NM 88211-0719

DISTRICT III  
1000 Rio Brazos Rd.  
Aztec, NM 87410

DISTRICT IV  
P. O. Box 2088  
Santa Fe, NM 87507-2088

State of New Mexico  
Energy, Minerals, and Natural Resources Department

Form C-102  
Revised 02-10-94

Instructions on back

Submit to the Appropriate  
District Office  
State Lease - 4 copies  
Fee Lease - 3 copies

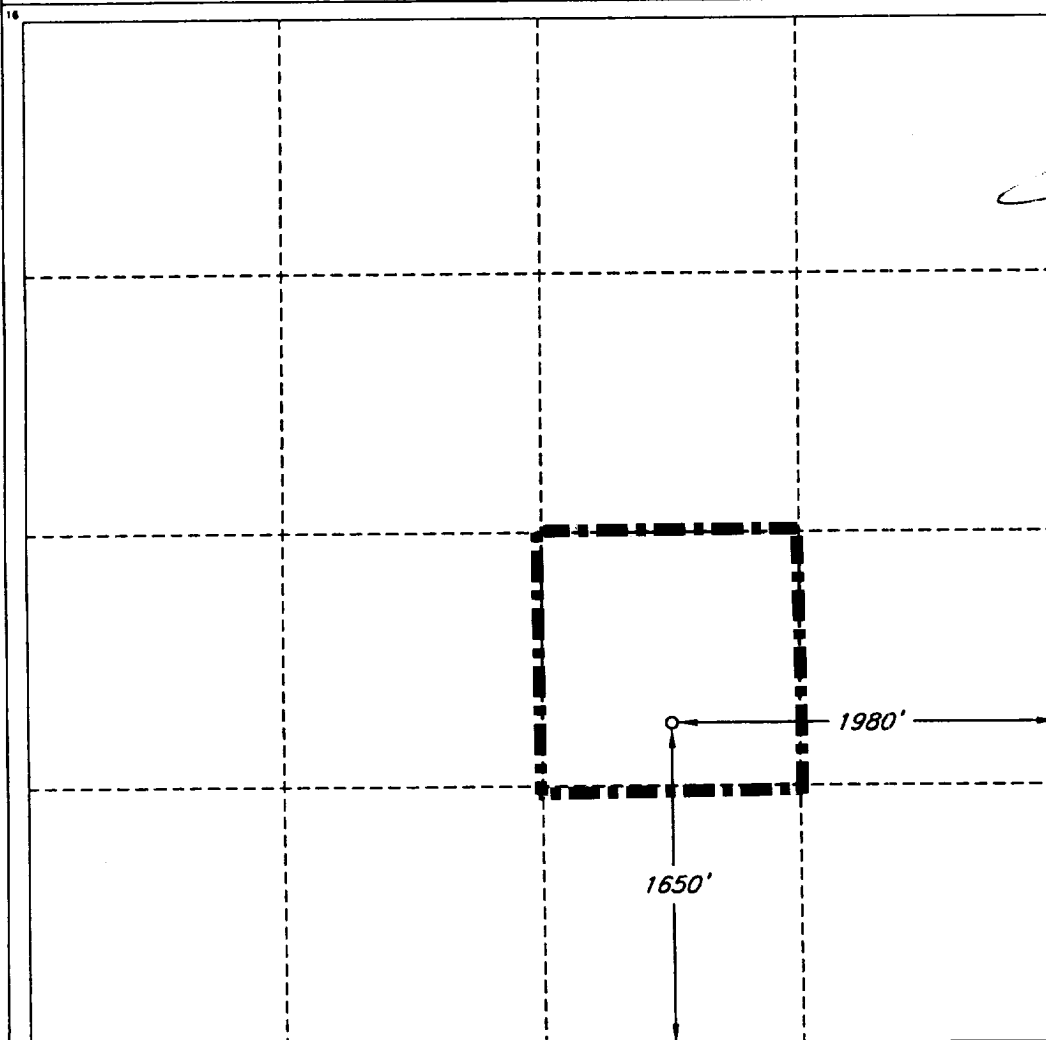
OIL CONSERVATION DIVISION

P. O. Box 2088  
Santa Fe, New Mexico 87504-2088

☒ AMENDED REPORT

WELL LOCATION AND ACREAGE DEDICATION PLAT

1 API Number 30-015-30448		2 Pool Code		3 Pool Name North Shugart (Wolfcamp)					
4 Property Code 23808		5 Property Name SHUGART '23' FEDERAL				6 Well Number 1			
7 OGRID No. 020305		8 Operator Name SANTA FE ENERGY RESOURCES, INC.				9 Elevation 3675'			
10 SURFACE LOCATION									
UL or lot no. J	Section 23	Township 18 SOUTH	Range 31 EAST, N.M.P.M.	Lot Ida	Feet from the 1650'	North/South line SOUTH	Feet from the 1980'	East/West line EAST	County EDDY
11 BOTTOM HOLE LOCATION IF DIFFERENT FROM SURFACE									
UL or lot no.	Section	Township	Range	Lot Ida	Feet from the	North/South line	Feet from the	East/West line	County
12 Dedicated Acres 40		13 Joint or Infill		14 Consolidation Code		15 Order No.			
NO ALLOWABLE WELL BE ASSIGNED TO THIS COMPLETION UNTIL ALL INTERESTS HAVE BEEN CONSOLIDATED OR A NON-STANDARD UNIT HAS BEEN APPROVED BY THE DIVISION									



OPERATOR CERTIFICATION

I hereby certify that the information contained herein is true and complete to the best of my knowledge and belief.

Signature

Printed Name

Terry McCullough

Title

Sr. Production Clerk

Date

April 13, 1999

SURVEYOR CERTIFICATION

I hereby certify that the well location shown on this plat was plotted from field notes of actual surveys made by me or under my supervision, and that the same is true and correct to the best of my belief.

Date of Survey

AUGUST 11, 1999

Signature

Professional Surveyor

ROGER M. ROBBINS  
REGISTERED PROFESSIONAL SURVEYOR  
12128  
Certificate No.  
ROGER M. ROBBINS P.S. #12128  
108 #60201 / 73 NE / VHR

New Mexico Oil Conservation Division  
C-102 Instructions

IF THIS IS AN AMENDED REPORT, CHECK THE BOX LABELED  
"AMENDED REPORT" AT THE TOP OF THIS DOCUMENT.

Surveyors shall use the latest United States government survey or dependent resurvey. Well locations will be in reference to the New Mexico Principal Meridian. If the land is not surveyed contact the appropriate OCD district office. Independent subdivision surveys will not be acceptable.

1. The OCD assigned API number for this well
2. The pool code for this (proposed) completion
3. The pool name for this (proposed) completion
4. The property code for this (proposed) completion
5. The property name (well name) for this (proposed) completion
6. The well number for this (proposed) completion
7. Operator's OGRID number
8. The operator's name
9. The ground level elevation of this well
10. The surveyed surface location of this well measured from the section lines NOTE: If the United States government survey designates a Lot Number for this location use that number in the "UL or lot no." box. Otherwise use the OCD unit letter.
11. Proposed bottom hole location. If this is a horizontal hole indicate the location of the end of the hole.
12. The calculated acreage dedicated to this completion to nearest hundredth of an acre
13. Put a Y if more than one completion will be sharing this same acreage or N if this is the only completion on this acreage
14. If more than one lease of different ownership has been dedicated to the well show the consolidation code from the following table:

C	Communitization
U	Unitization
F	Forced pooling
O	Other
P	Consolidation pending

NO ALLOWABLE WILL BE ASSIGNED TO THIS COMPLETION UNTIL ALL INTERESTS HAVE BEEN CONSOLIDATED OR A NON-STANDARD UNIT HAS BEEN APPROVED BY THE DIVISION!

15. Write in the OCD order(s) approving a non-standard location, non-standard spacing, or directional or horizontal drilling
16. This grid represents a standard section. You may superimpose a non-standard section over this grid. Outline the dedicated acreage and the separate leases within that dedicated acreage. Show the well surface location and bottom hole location, if it is directionally drilled, with the dimensions from the section lines in the dimensions from the section lines in the cardinal directions. (Note: A legal location is determined from the perpendicular distance to the edge of the tract.) If this is a high angle or horizontal hole show that portion of the well bore that is open within this pool.

Show all lots, lot numbers, and their respective acreage.

If more than one lease has been dedicated to this completion, outline each one and identify the ownership as to both working interest and royalty.
17. The signature, printed name, and title of the person authorized to make this report, and the date this document was signed.
18. The Registered surveyors certification. This section does not have to be completed if this form has been previously accepted by the OCD and is being filed for a change of pool or dedicated acreage.