

UNITED STATES  
DEPARTMENT OF THE INTERIOR  
BUREAU OF LAND MANAGEMENT

**SUNDRY NOTICES AND REPORTS ON WELLS**

Do not use this form for proposals to drill or to re-enter an abandoned well. Use Form 3160-3 (APD) for such proposals.

N.M. Oil Cons. Division  
811 S. 1st Street  
Artesia, NM 88210-2834

FORM APPROVED  
OMB NO. 1004-0135  
Expires: November 30, 2000

5. Lease Serial No.

LC-065680

6. If Indian, Allottee or Tribe Name

7. If Unit or CA/Agreement, Name and/or No.

8. Well Name and No.

Shugart "23" Fed  
Com #1

9. API Well No.

30-015-30448

10. Field and Pool, or Exploratory Area

North Lusk (Bone Springs)

Township

11. County or Parish, State

Eddy

NM

**SUBMIT IN TRIPLICATE - Other Instructions on reverse side**

1. Type of Well

☒ Oil Well ☐ Gas Well ☐ Other

2. Name of Operator

Santa Fe Snyder Corp.

3a. Address

550 W. Texas, Suite 1330, Midland, TX 79701

3b. Phone No. (include area code)

915/686-6612

4. Location of Well (Footage, Sec., T., R., M., or Survey Description)

(J), 1650' FSL and 1980' FEL, Sec. 23, T-18S, R-31E

12. CHECK APPROPRIATE BOX(ES) TO INDICATE NATURE OF NOTICE, REPORT, OR OTHER DATA

TYPE OF SUBMISSION

☒ Notice of Intent

☐ Subsequent Report

☐ Final Abandonment Notice

TYPE OF ACTION

☐ Acidize

☐ Alter Casing

☐ Casing Repair

☐ Change Plans

☐ Convert to Injection

☐ Deepen

☐ Fracture Treat

☐ New Construction

☐ Plug and Abandon

☐ Plug Back

☐ Production (Start/Resume)

☐ Reclamation

☒ Recomplete

☐ Temporarily Abandon

☐ Water Disposal

☐ Water Shut-Off

☐ Well Integrity

☐ Other

13. Describe Proposed or Completed Operation (clearly state all pertinent details, including estimated starting date of any proposed work and approximate duration thereof. If the proposal is to deepen directionally or recomplete horizontally, give subsurface locations and measured and true vertical depths of all pertinent markers and zones. Attach the Bond under which the work will be performed or provide the Bond No. on file with BLM/BIA. Required subsequent reports shall be filed within 30 days following completion of the involved operations. If the operation results in a multiple completion or recompletion in a new interval, a Form 3160-4 shall be filed once testing has been completed. Final Abandonment Notices shall be filed only after all requirements, including reclamation, have been completed, and the operator has determined that the final site is ready for final inspection.)

Santa Fe Snyder plans to Recomplete this well from the North Shugart (Wolfcamp) to the North Lusk (Bone Springs) per the attached procedure.

14. I hereby certify that the foregoing is true and correct  
Name (Printed/Typed)

Bill Keathly

Title

Regulatory Specialist

Date

12-30-99

**THIS SPACE FOR FEDERAL OR STATE OFFICE USE**

Approved by

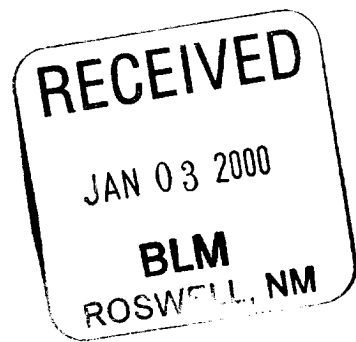
PETROLEUM ENGINEER

Date JAN 06 2000

Conditions of approval, if any, are attached. Approval of this notice does not warrant or certify that the applicant holds legal or equitable title to those rights in the subject lease which would entitle the applicant to conduct operations thereon.

Office

Title 18 U.S.C. Section 1001, and Title 43 U.S.C. Section 1212, makes it a crime for any person knowingly and willfully to make to any department or agency of the United States any false, fictitious or fraudulent statements or representations as to any matter within its jurisdiction.



**SANTA FE SNYDER CORPORATION.**  
**CENTRAL DIVISION**  
**Recompletion Workover Procedure**  
**AFE #299216**

**DATE:** Oct 15, 1999

**LOCATION :** Sec. 23, T-18-S, R-31-E  
1650' FSL & 1980' FEL  
Eddy County, New Mexico

**FIELD:** North Lusk (Bone Spring)

**LEASE :** Shugart 23 Fed #1

**OBJECTIVE :** Complete & test Bone Spring carbonate at 8254'-62', 8286'-8300', & 8306'-10'

**CONDITION OF HOLE :**

**TOTAL DEPTH :** 12,000'                      **PBTD :** ± 11,903                      **KB :** 3692' (17' A.G.L.)

**CASING :** 13-3/8" 48# H-40 @ 700'. Cmt w/375sx 35:65:6 Cl-C + 2% CaCl, ¼ PPS celloflakes & 200sx Cl-C + 2% CaCl. Circ 181sx to surface

**8-5/8", 24#, K-55 @ 4340'. Cmt w/650sx 50:50 Cl-C + 10% gel, 5% salt, ¼ PPS celloflakes & 200sx Cl-C + 2% CaCl. Circ 45sx to surface**

**5½"20#, N-80, LT&C + 5½" (11,945'-7639'), 5½"17#, J-55, LT&C (7639') and 5½"17#, N-80, LT&C(4569-surf.). Shoe @ 11,945', FC @ 11,903. Cmt w/1100 sx 50:50 Poz-H.**

**PERFORATIONS:** 10014'-17', 10027'-60', 10086'-96'  
Plugged perfs: 11720'-724', 11750'-753' & 11780-783

**TBG DETAIL :** 2 3/8" 4.7#, P-110. 2 3/8"x2 7/8" X-over and UNI-VI Packer @9,932'

**REF. LOG:** Schlumberger Platform Express Three Detector Litho-Density Compensated Neutron/Gamma Ray, run 1-25-99

**PROCEDURE :** Complete and test 8254'-62', 8286'-8300', & 8306'-10'

1. Hold pre-job safety meeting. MIRU completion rig. ND Wellhead, NU BOPE.
2. Unlatch from packer and circulate bottoms up with 2% KCl. Latch onto packer and unseat. POOH 2 3/8" tbg and packer.
3. Add 60' of cement to plug at 11,680' in order to comply with BLM abandonment requirements.

**RECEIVED**  
JAN 03 2000  
ELM  
ROCKWELL HM

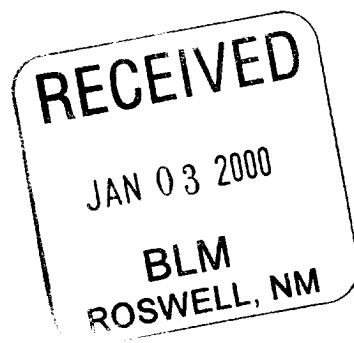
**SANTA FE SNYDER CORPORATION.**  
**CENTRAL DIVISION**  
**Recompletion Workover Procedure**  
**AFE #299216**

4. MIRU Wireline. PU CIBP and RIH to 9,980'. Set BP and dump 80' cmt. POOH & LD 2 3/8" tbg.
5. MIRU perforators. Perforate with 4" casing guns w/2 premium charges/ft, 90° phasing, over the following intervals:

8254'-8262'  
8286'-8300'  
8306'-8310'  
(26' net)
6. PU 2 jts 2 7/8" tbg., 1.781" F nipple, 10' pup jt, 5 1/2" 20# UNI-V packer, on/off tool, 1 jt 2 7/8" tbg, 1.81" SN, and test into hole on 2 7/8" 6.5# L80 tbg to 8300' (tail depth). Leave packer unset.
7. MIRU acidizers. Treat tbg with 250 gals 15% HCl and reverse out. Spot 250 gals 15% HCl with chelating agent, corrosion inhibitor, nonemulsifier, and friction reducer across perfs at 8254'-8310'. PUH and set packer at 8150'. Breakdown perfs and acidize with 2000 gals acid, pumping 2-3 BPM. Drop 30 1.3 s.g. ball sealers, 1 every 40 gals for first 1200 gals. Pump remaining acid and flush to bottom perf plus 2 bbls with 2% KCl. RD Acidizers and flow well back.
8. Flow or swab well to clean up. Sample fluid cut and composition as necessary.
9. If warranted, Acid Fracture with 7000 gals cross-linked 15% HCl, energized with CO2, through tubing. Pump at 4 BPM and 5000 psi maximum surface pressure. Drop 30 1.3 sg ball sealers evenly spaced through first 3000 gallons. Surge sealers and let fall, then pump remaining acid and 1400 gallon 2% KCl flush at maximum rate to extend fractures. Shut-in 15 minutes and then flow back to clean up. RD Acidizers.
10. Flow and swab well as necessary to clean up.
11. Consult with Division office regarding additional testing and installation of artificial lift equipment.

Prepared by Bradley C. Cross  
Brad Cross (915) 686-6655 (ofc), (915)694-7423 (hm)  
Senior Engineer

Reviewed by \_\_\_\_\_  
James Moore (915) 686-6624  
Division Superintendent, Production



DISTRICT I  
P. O. Box 1980  
Hobbs, NM 88241-1980

DISTRICT II  
P. O. Drawer DD  
Artesia, NM 88211-0719

DISTRICT III  
1000 Rio Brazos Rd.  
Aztec, NM 87410

DISTRICT IV  
P. O. Box 2088  
Santa Fe, NM 87507-2088

State of New Mexico  
Energy, Minerals, and Natural Resources Department

Form C-102  
Revised 02-10-94

Instructions on back

Submit to the Appropriate  
District Office  
State Lease - 4 copies  
Fee Lease - 3 copies

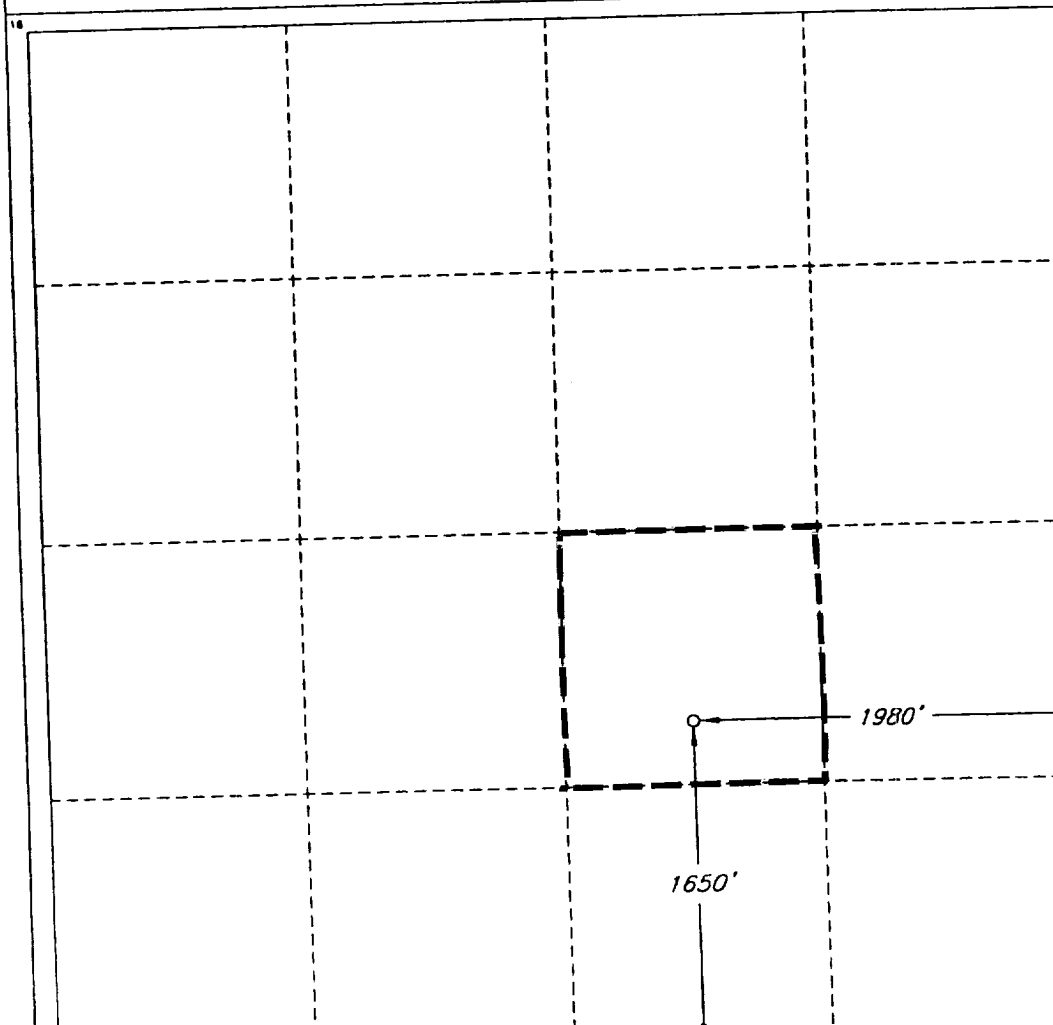
**OIL CONSERVATION DIVISION**  
P. O. Box 2088  
Santa Fe, New Mexico 87504-2088

☐ AMENDED REPORT

**WELL LOCATION AND ACREAGE DEDICATION PLAT**

1 API Number 30-015-30448		2 Pool Code 41450		3 Pool Name North Lusk (Bone Spring)		4 Well Number 1			
5 Property Code 23808		6 Property Name SHUGART '23' FEDERAL				7 Elevation 3875'			
8 OGRID No. 20305		9 Operator Name SANTA FE ENERGY RESOURCES, INC.							
10 SURFACE LOCATION									
UL or lot no. J	Section 23	Township 18 SOUTH	Range 31 EAST, N.M.P.M.	Lot Ida	Feet from the 1650'	North/South line SOUTH	Feet from the 1980'	East/West line EAST	County EDDY
11 "BOTTOM HOLE LOCATION IF DIFFERENT FROM SURFACE									
UL or lot no.	Section	Township	Range	Lot Ida	Feet from the	North/South line	Feet from the	East/West line	County
12 Dedicated Acres 40		13 Joint or Infill		14 Consolidation Code		15 Order No.			

NO ALLOWABLE WELL BE ASSIGNED TO THIS COMPLETION UNTIL ALL INTERESTS HAVE BEEN  
CONSOLIDATED OR A NON-STANDARD UNIT HAS BEEN APPROVED BY THE DIVISION



**OPERATOR CERTIFICATION**

I hereby certify that the information  
contained herein is true and complete  
to the best of my knowledge and belief.

Signature

*Bill Keathly*

Printed Name

Bill Keathly

Title

Regulatory Specialist

Date

12-30-99

**SURVEYOR CERTIFICATION**

I hereby certify that the well  
location shown on this plat was  
plotted from field notes of actual  
surveys made by me or under  
my supervision, and that the  
same is true and correct to the  
best of my belief.

Date of Survey

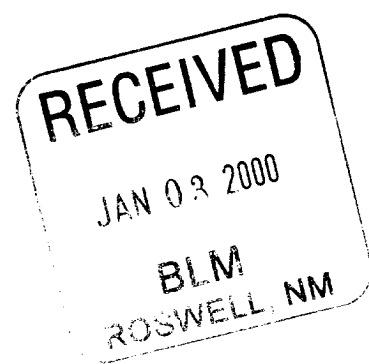
AUGUST 14, 2000

Signature of Registered Professional Surveyor

*Roger M. Robbins*  
REGISTERED PROFESSIONAL SURVEYOR  
12128

Certificate No.

ROGER M. ROBBINS P.S. #12128



**RECEIVED**

JAN 03 2000

BLM  
ROSWELL, NM