

District I
PO Box 1980, Hobbs, NM 88241-1980

District II
811 South First, Artesia, NM 88210

District III
1000 Rio Brazos Rd., Aztec, NM 87410

District IV
2040 South Pacheco, Santa Fe, NM 87505

State of New Mexico
Energy, Minerals & Natural Resources Department

OIL CONSERVATION DIVISION
2040 South Pacheco
Santa Fe, NM 87505

Form C-1010
Revised October 18, 1994

Instructions on back
Submit to Appropriate District Office
State Lease - 6 Copies
Fee Lease - 5 Copies

☐ AMENDED REPORT

APPLICATION FOR PERMIT TO DRILL, RE-ENTER, DEEPEN, PLUGBACK, OR ADD A ZONE

Operator Name and Address Nearburg Producing Company 3300 N A St., Bldg 2, Suite 120 Midland, TX 79705		GRID Number 015742
Property Code		API Number 30-015-30793
Property Name South Boyd 27		Well No. 12

Surface Location

UL or lot no.	Section	Township	Range	Lot Idn	Feet from the	North/South line	Feet from the	East/West Line	County
N	27	19S	25E		990	South	1980	West	Eddy

Proposed Bottom Hole Location If Different From Surface

UL or lot no.	Section	Township	Range	Lot Idn	Feet from the	North/South line	Feet from the	East/West Line	County
Proposed Pool 1 Dagger Draw: Upper Penn, North					Proposed Pool 2				
15472									

Work Type Code N	Well Type Code O	Cable/Rotary R	Lease Type Code P	Ground Level Elevation 3465
Multiple No	Proposed Depth 8300	Formation Cisco/ Canyon	Contractor Patterson	Spud Date 11-01-99

Minimum WOC time 8 hrs. Proposed Casing and Cement Program

Hole Size	Casing Size	Casing weight/foot	Setting Depth	Sacks of Cement	Estimated TOC
14-3/4"	9-5/8"	36#	1,100'	1,000 sx	Circ
8-3/4"	7"	23# & 26#	8,300'	1200 sx	Circ
					Post TD-1
					10-29-99
					API & LCC

Describe the proposed program. If this application is to DEEPEN or PLUG BACK give the data on the present productive zone and proposed new productive zone. Describe the blowout prevention program, if any. Use additional sheets if necessary.

Propose to drill the well to sufficient depth to evaluate the Cisco/ Canyon formation. After reaching TD, logs will be run and casing set if the evaluation is positive. Perforate, test and stimulate as necessary to establish production.

Acreage dedication is 160 acres: SW/4 of Section 27.

Notify OCD at SPUD & TIME
to witness cementing the
9 5/8" casing.

I hereby certify that the information given above is true and complete to the best of my knowledge and belief. Signature: <u>Blaik M. Wisenbaker</u>		OIL CONSERVATION DIVISION	
Printed name: Blaik M. Wisenbaker		Approved By: <u>ORIGINAL SIGNED BY TIM W. GUM</u>	
Title: Sr. Petroleum Engineer		Title: <u>DISTRICT II SUPERVISOR</u>	
Date: 10-22-99		Approval Date: <u>10-22-99</u>	Expiration Date: <u>10-22-00</u>
Phone: 915/ 686-8235		Conditions of Approval: Attached: <input type="checkbox"/>	

DISTRICT I
P.O. Box 1980, Hobbs, NM 88241-1980

DISTRICT II
P.O. Drawer DD, Artesia, NM 88211-0719

DISTRICT III
1000 Rio Brazos Rd., Aztec, NM 87410

DISTRICT IV
P.O. BOX 2088, SANTA FE, N.M. 87504-2088

State of New Mexico
Energy, Minerals and Natural Resources Department

Form C-102
Revised February 10, 1994
Submit to Appropriate District Office
State Lease - 4 Copies
Fee Lease - 3 Copies

OIL CONSERVATION DIVISION

P.O. Box 2088
Santa Fe, New Mexico 87504-2088

☐ AMENDED REPORT

WELL LOCATION AND ACREAGE DEDICATION PLAT

API Number	Pool Code	Pool Name
		Dagger Draw:Upper Penn, North
Property Code	Property Name	Well Number
	SOUTH BOYD 27	12
OGRID No. 015742	Operator Name NEARBURG PRODUCING COMPANY	Elevation 3465

Surface Location

UL or lot No.	Section	Township	Range	Lot Idn	Feet from the	North/South line	Feet from the	East/West line	County
N	27	19 S	25 E		990	SOUTH	1980	WEST	EDDY

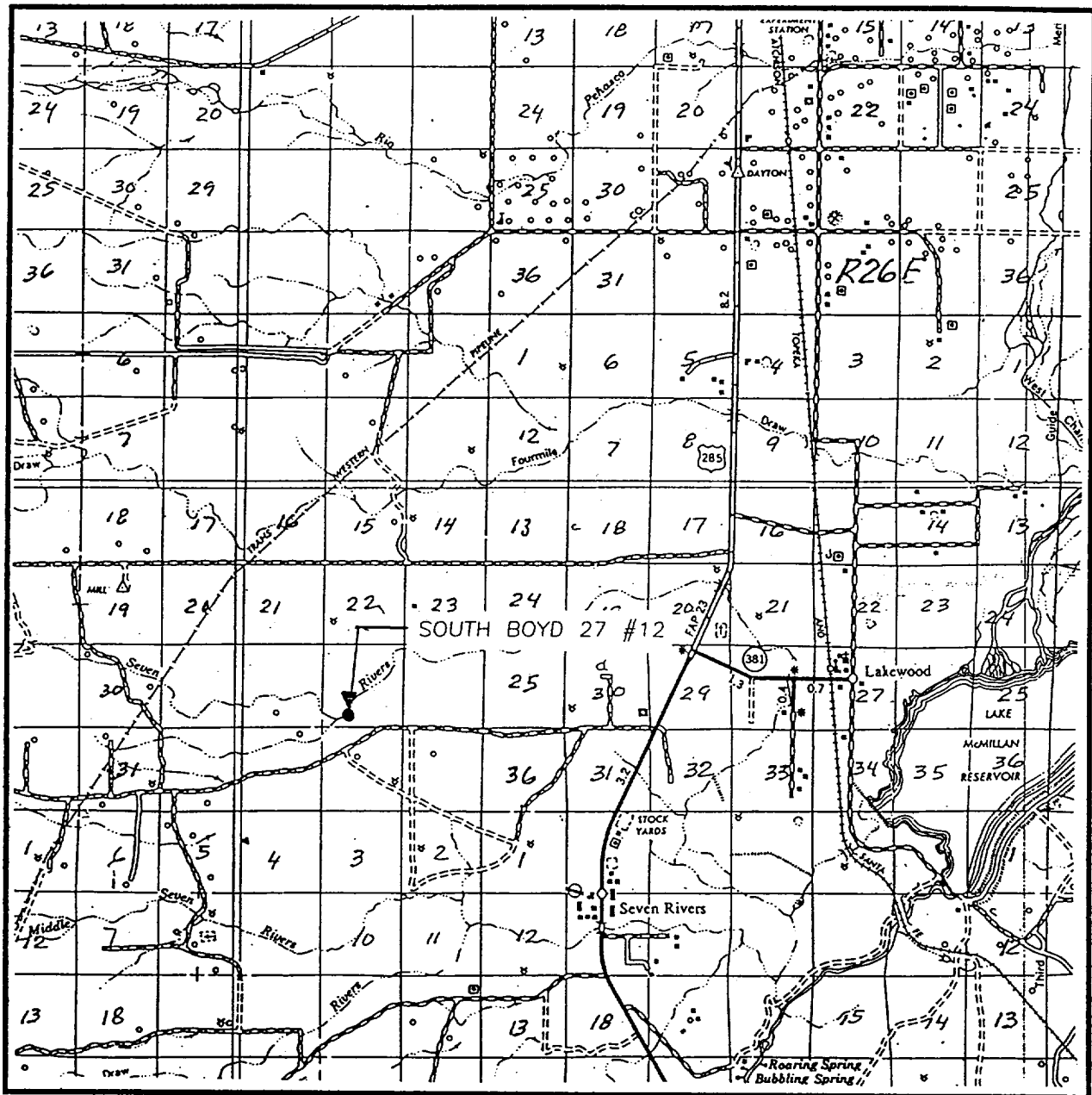
Bottom Hole Location If Different From Surface

UL or lot No.	Section	Township	Range	Lot Idn	Feet from the	North/South line	Feet from the	East/West line	County
Dedicated Acres	Joint or Infill	Consolidation Code	Order No.						
160	N								

NO ALLOWABLE WILL BE ASSIGNED TO THIS COMPLETION UNTIL ALL INTERESTS HAVE BEEN CONSOLIDATED
OR A NON-STANDARD UNIT HAS BEEN APPROVED BY THE DIVISION

	OPERATOR CERTIFICATION	
	I hereby certify the the information contained herein is true and complete to the best of my knowledge and belief.	
	Blak M. Wisenbaker Signature	
	Blak M. Wisenbaker Printed Name Sr. Petroleum Engineer Title 10/22/99 Date	
	SURVEYOR CERTIFICATION	
	I hereby certify that the well location shown on this plat was plotted from field notes of actual surveys made by me or under my supervision, and that the same is true and correct to the best of my belief.	
	OCTOBER 19, 1999	
	Date Surveyed Signature and Seal of Professional Surveyor Professional Surveyor RONALD J. EIDSON NEW MEXICO 8239 8-21-99 99-11-0868 Certificate No. RONALD J. EIDSON 3239 CARL EIDSON 12641 RONALD J. EIDSON 12185	

VICINITY MAP



SCALE: 1" = 2 MILES

SEC. 27 TWP. 19-S RGE. 25-E

SURVEY N.M.P.M.

COUNTY EDDY

DESCRIPTION 990' FSL & 1980' FWL

ELEVATION 3465

NEARBURG

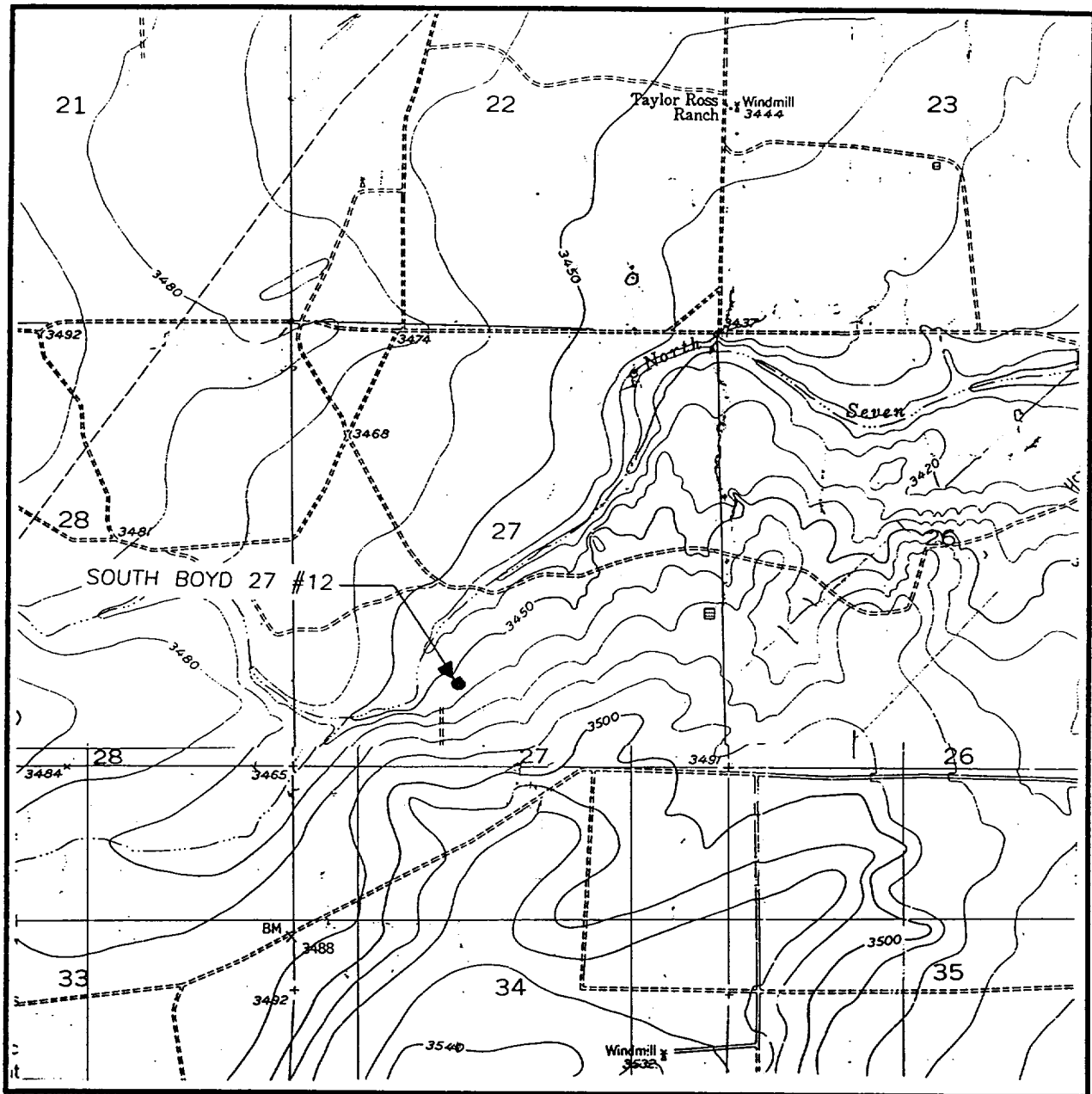
OPERATOR PRODUCING COMPANY

LEASE SOUTH BOYD 27

**JOHN WEST SURVEYING
HOBBS, NEW MEXICO**

(505) 393-3117

LOCATION VERIFICATION MAP



SCALE: 1" = 2000'

CONTOUR INTERVAL:
SEVEN RIVERS - 10'
DAYTON - 10'

SEC. 27 TWP. 19-S RGE. 25-E

SURVEY N.M.P.M.

COUNTY EDDY

DESCRIPTION 990' FSL & 1980' FWL

ELEVATION 3465

OPERATOR NEARBURG
PRODUCING COMPANY

LEASE SOUTH BOYD 27

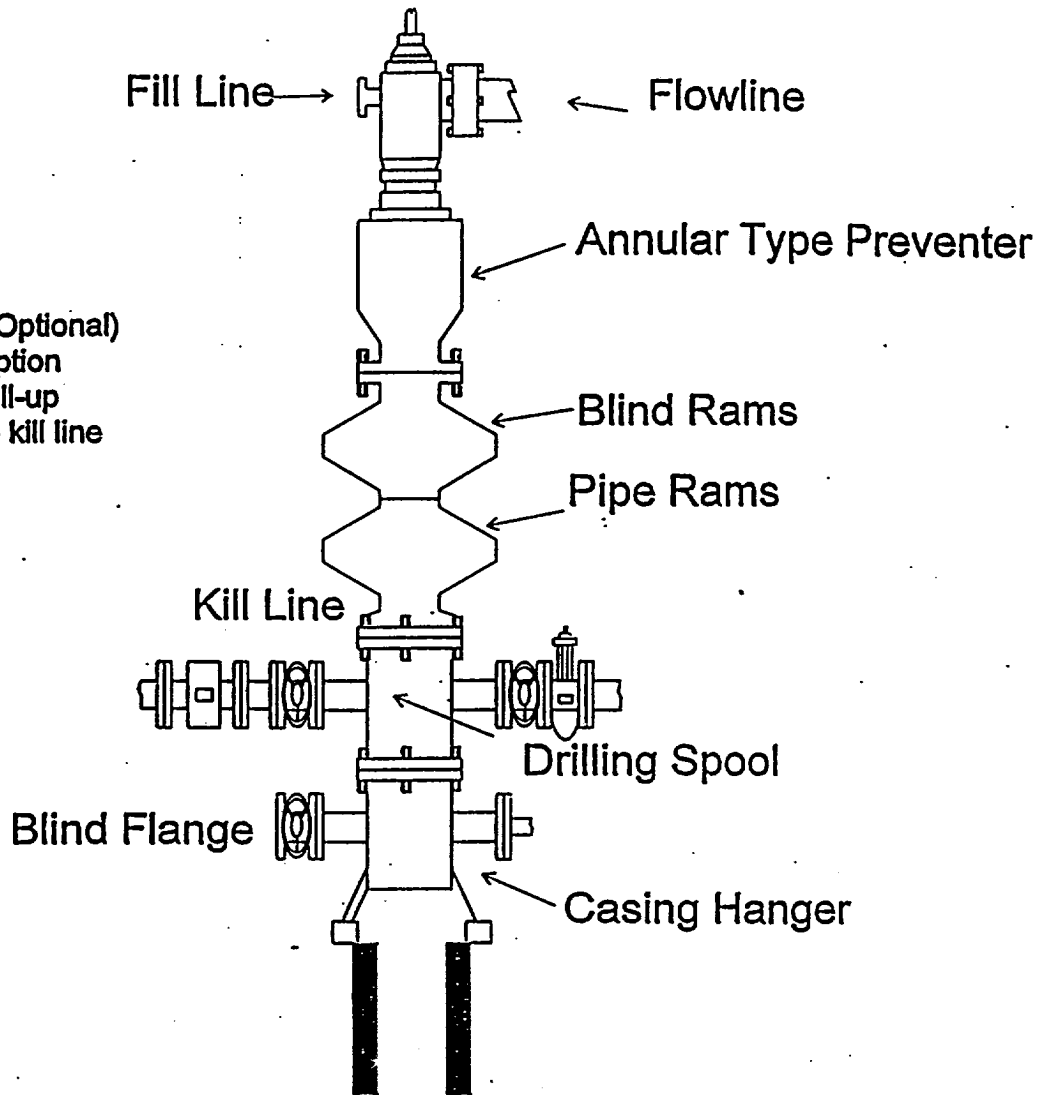
JOHN WEST SURVEYING
HOBBS, NEW MEXICO
(505) 393-3117

U.S.G.S. TOPOGRAPHIC MAP

SEVEN RIVERS, DAYTON, N.M.

BOPE SCHEMATIC

Rotating Head (Optional)
Drilling Nipple option
must include a fill-up
line. Do not use kill line
for fill up.



1500 Series