

District I  
PO Box 1980, Hobbs, NM 88241-1980

District II  
811 South First, Artesia, NM 88210

District III  
1000 Rio Brazos Rd., Aztec, NM 87410

District IV  
2040 South Pacheco, Santa Fe, NM 87505

State of New Mexico  
Energy, Minerals & Natural Resources Department

OIL CONSERVATION DIVISION  
2040 South Pacheco  
Santa Fe, NM 87505

Form C-101

Revised October 18, 1994

Instructions on back

Submit to Appropriate District Office

State Lease - 6 Copies

Fee Lease - 5 Copies

☐ AMENDED REPORT

APPLICATION FOR PERMIT TO DRILL, RE-ENTER, DEEPEN, PLUG BACK, OR ADD A ZONE

Operator Name and Address Nearburg Producing Company 3300 N A St., Bldg 2, Suite 120 Midland, TX 79705		OGRID Number 015742
Property Code 15753		API Number 30-015-30817
Property Name South Boyd 27		Well No. 11

Surface Location

UL or lot no.	Section	Township	Range	Lot Idn	Feet from the	North/South line	Feet from the	East/West Line	County
F	27	19S	25E		1830	North	1830	West	Eddy

Proposed Bottom Hole Location If Different From Surface

UL or lot no.	Section	Township	Range	Lot Idn	Feet from the	North/South line	Feet from the	East/West Line	County
Proposed Pool 1 Dagger Draw: Upper Penn, North					Proposed Pool 2				

Work Type Code N	Well Type Code O	Cable/Rotary R	Lease Type Code P	Ground Level Elevation 3460
Multiple No	Proposed Depth 8300	Formation Cisco/ Canyon	Contractor Patterson	Spud Date 11-15-99

Minimum WOC time / 8 hrs. Proposed Casing and Cement Program

Hole Size	Casing Size	Casing weight/foot	Setting Depth	Sacks of Cement	Estimated TOC
14-3/4"	9-5/8"	36#	1,100'	1,000 sx	Circ Surface
8-3/4"	7"	23# & 26#	8,300'	1,200 sx	Circ 11
					Post ID-1
					11-12-99
					APF & Loc

Describe the proposed program. If this application is to DEEPEN or PLUG BACK give the data on the present productive zone and proposed new productive zone. Describe the blowout prevention program, if any. Use additional sheets if necessary.

Propose to drill the well to sufficient depth to evaluate the Cisco/ Canyon formation. After reaching TD, logs will be run and casing set if the evaluation is positive. Perforate, test and stimulate as necessary to establish production.

Notify OCD at SPUD & TIME  
to witness cementing the  
9 5/8" casing.

Acreage dedication is 160 acres: NW/4 of Section 27.

I hereby certify that the information given above is true and complete to the best of my knowledge and belief.

Signature: Blaik M. Wisenbaker

Printed name: Blaik M. Wisenbaker

Title: Sr. Petroleum Engineer

Date: 10-28-99

Phone: 915/ 686-8235

OIL CONSERVATION DIVISION

Approved By: ORIGINAL SIGNED BY TIM W. GUM  
DISTRICT II SUPERVISOR

Title:

Approval Date: 11-3-99

Expiration Date: 11-3-00

Conditions of Approval:  
Attached: ☐

DISTRICT I  
P.O. Box 1980, Hobbs, NM 88241-1980

State of New Mexico

Energy, Minerals and Natural Resources Department

Form C-102  
Revised February 10, 1994  
Submit to Appropriate District Office  
State Lease - 4 Copies  
Fee Lease - 3 Copies

DISTRICT II  
P.O. Drawer DD, Artesia, NM 88211-0719

DISTRICT III  
1000 Rio Brazos Rd., Aztec, NM 87410

DISTRICT IV  
P.O. BOX 2088, SANTA FE, N.M. 87504-2088

OIL CONSERVATION DIVISION

P.O. Box 2088

Santa Fe, New Mexico 87504-2088

☐ AMENDED REPORT

WELL LOCATION AND ACREAGE DEDICATION PLAT

API Number	Pool Code 15472	Pool Name Dagger Draw:Upper Penn, North
Property Code	Property Name SOUTH BOYD 27	Well Number 11
OGRID No. 015742	Operator Name NEARBURG PRODUCING COMPANY	Elevation 3460

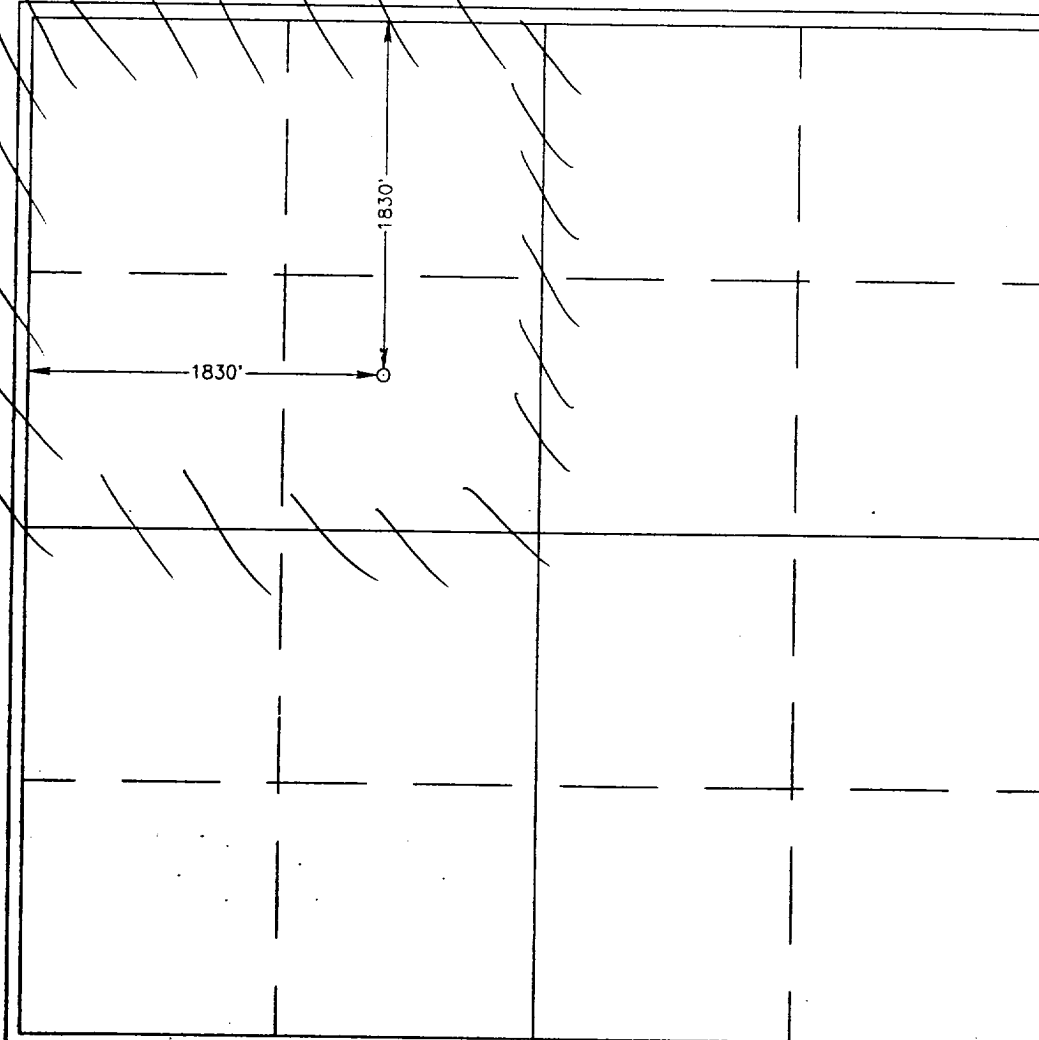
Surface Location

UL or lot No. F	Section 27	Township 19 S	Range 25 E	Lot Idn	Feet from the 1830	North/South line NORTH	Feet from the 1830	East/West line WEST	County EDDY
--------------------	---------------	------------------	---------------	---------	-----------------------	---------------------------	-----------------------	------------------------	----------------

Bottom Hole Location If Different From Surface

UL or lot No.	Section	Township	Range	Lot Idn	Feet from the	North/South line	Feet from the	East/West line	County
Dedicated Acres 160	Joint or Infill N	Consolidation Code	Order No.						

NO ALLOWABLE WILL BE ASSIGNED TO THIS COMPLETION UNTIL ALL INTERESTS HAVE BEEN CONSOLIDATED  
OR A NON-STANDARD UNIT HAS BEEN APPROVED BY THE DIVISION



OPERATOR CERTIFICATION

I hereby certify the the information  
contained herein is true and complete to the  
best of my knowledge and belief.

*Blaik Wisenbaker*  
Signature

Blaik Wisenbaker  
Printed Name

Sr. Petroleum Engineer  
Title

11-1-99  
Date

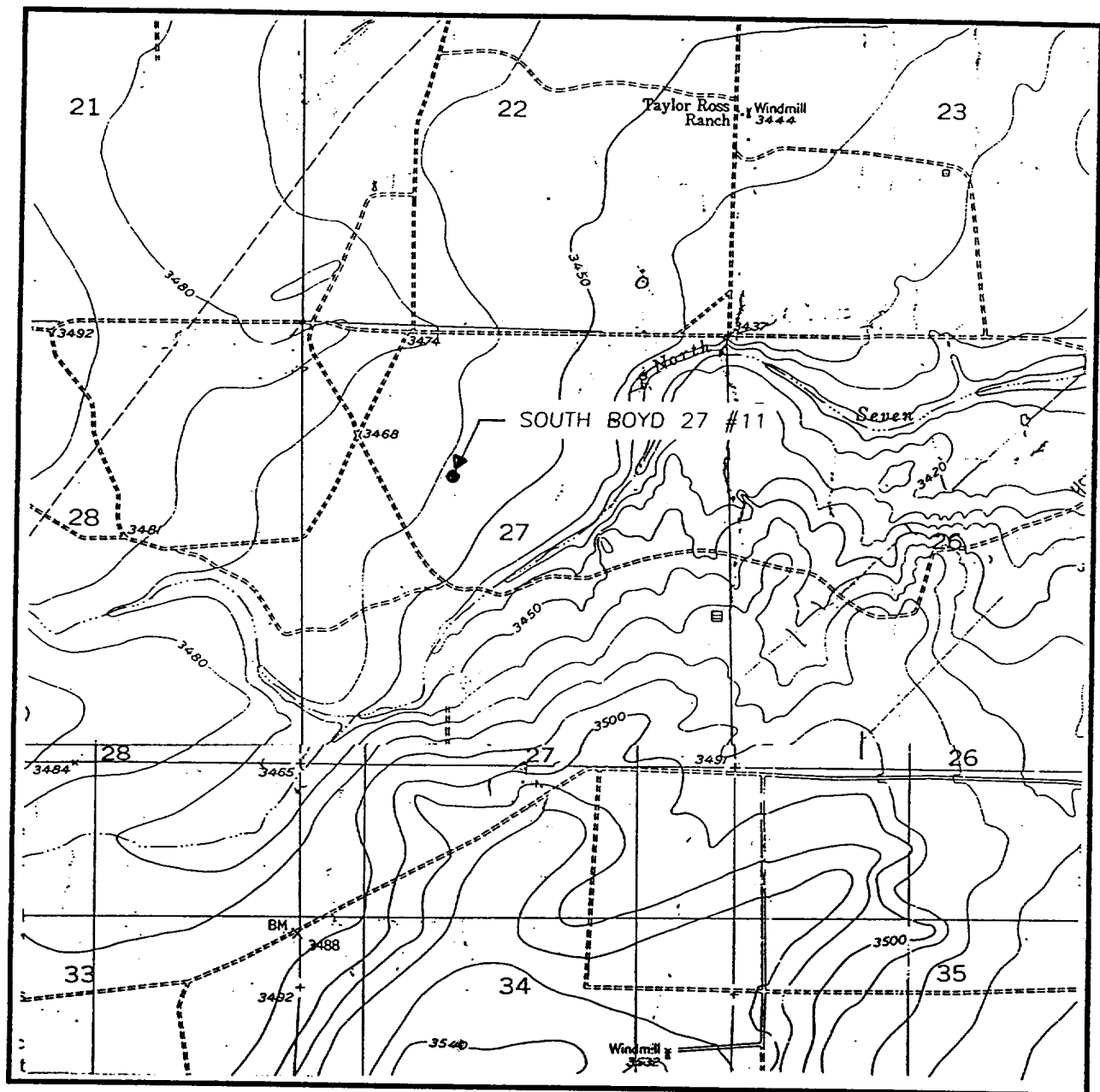
SURVEYOR CERTIFICATION

I hereby certify that the well location shown  
on this plat was plotted from field notes of  
actual surveys made by me or under my  
supervision, and that the same is true and  
correct to the best of my belief.

OCTOBER 19, 1999

Date Surveyed  
Signature & Seal  
Professional Surveyor  
NEW MEXICO  
12641  
11-1-99  
Cert. No. RONALD E. EIDSON 3239  
EIDSON 12641  
McDONALD 12185

# LOCATION VERIFICATION MAP



SCALE: 1" = 2000'

CONTOUR INTERVAL:  
SEVEN RIVERS - 10'  
DAYTON - 10'

SEC. 27 TWP. 19-S RGE. 25-E

SURVEY N.M.P.M.

COUNTY EDDY

DESCRIPTION 1830' FNL & 1830' FWL

ELEVATION 3460

NEARBURG  
OPERATOR PRODUCING COMPANY

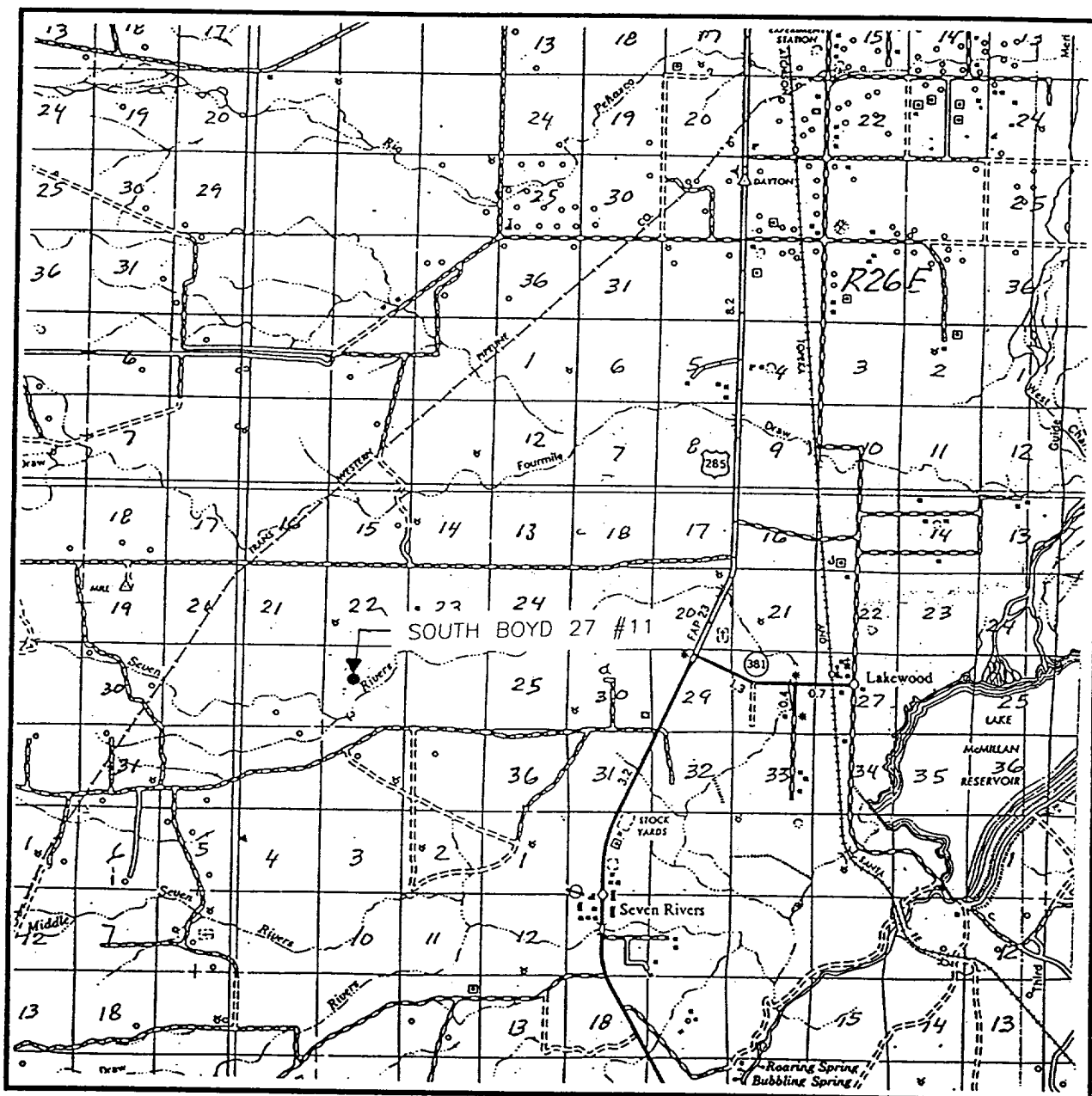
LEASE SOUTH BOYD 27

U.S.G.S. TOPOGRAPHIC MAP

SEVEN RIVERS, DAYTON, N.M.

**JOHN WEST SURVEYING**  
**HOBBS, NEW MEXICO**  
**(505) 393-3117**

# VICINITY MAP

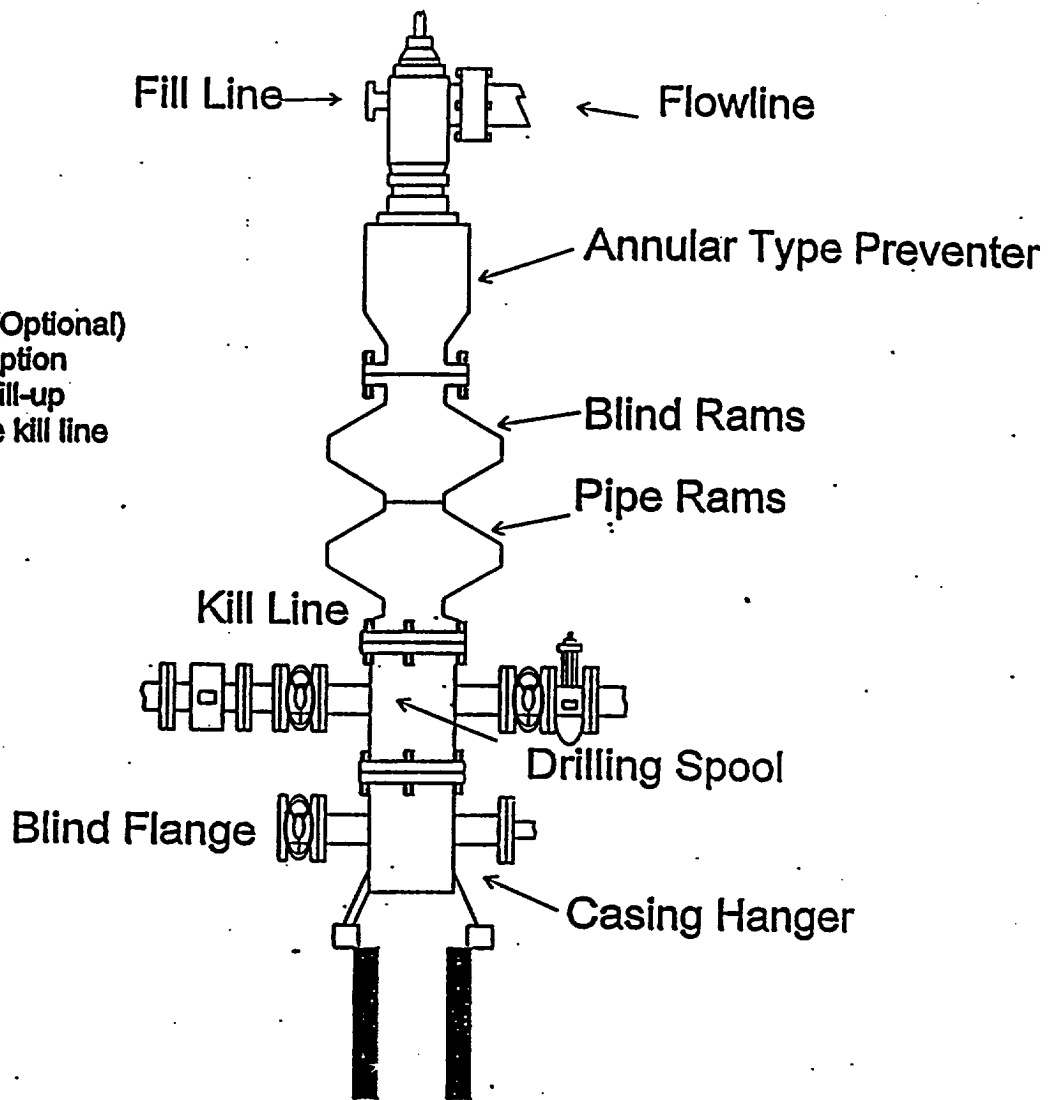


SCALE: 1" = 2 MILES

SEC. 27 TWP. 19-S RGE. 25-E  
 SURVEY N.M.P.M.  
 COUNTY EDDY  
 DESCRIPTION 1830' FNL & 1830' FWL  
 ELEVATION 3460  
 OPERATOR NEARBURG  
 LEASE PRODUCING COMPANY  
 SOUTH BOYD 27

JOHN WEST SURVEYING  
 HOBBS, NEW MEXICO  
 (505) 393-3117

# BOPE SCHEMATIC



Rotating Head (Optional)  
Drilling Nipple option  
must include a fill-up  
line. Do not use kill line  
for fill up.

1500 Series