

District I
1625 N. French Dr., Hobbs, NM 88240
District II
811 South First, Artesia, NM 88210
District III
1000 Rio Brazos Road, Aztec, NM 87410
District IV
2040 South Pacheco, Santa Fe, NM 87505

State of New Mexico
Energy Minerals and Natural Resources

Oil Conservation Division
2040 South Pacheco
Santa Fe, NM 87505

Form C-101
Revised March 17, 1999

Submit to appropriate District Office
State Lease - 6 Copies
Fee Lease - 5 Copies

☐ AMENDED REPORT

APPLICATION FOR PERMIT TO DRILL, RE-ENTER, DEEPEN, PLUGBACK, OR ADD A ZONE

¹ Operator Name and Address OXY USA Inc. P.O. Box 50250 Midland, TX 79710-0250		² OGRID Number 16696
		³ API Number 30-015-30851
⁴ Property Code 21438	⁵ Property Name OXY Pearl State	⁶ Well No. 2

⁷ Surface Location

UL or lot no.	Section	Township	Range	Lot Idn	Feet from the	North/South line	Feet from the	East/West line	County
A	32	19S	29E		860	North	660	East	Eddy

⁸ Proposed Bottom Hole Location If Different From Surface

UL or lot no.	Section	Township	Range	Lot Idn	Feet from the	North/South line	Feet from the	East/West line	County
⁹ Proposed Pool 1 Parkway Morrow, West					¹⁰ Proposed Pool 2 82600				

¹¹ Work Type Code N	¹² Well Type Code G	¹³ Cable/Rotary R	¹⁴ Lease Type Code S	¹⁵ Ground Level Elevation 3280'
¹⁶ Multiple N	¹⁷ Proposed Depth 11400'	¹⁸ Formation Morrow	¹⁹ Contractor FWA/Peterson	²⁰ Spud Date 12/4/99

²¹ Proposed Casing and Cement Program

Hole Size	Casing Size	Casing weight/foot	Setting Depth	Sacks of Cement	Estimated TOC
17-1/2"	13-3/8"	48#	400'	500sx	Circulate
11"	8-5/8"	32#	3000'	990sx	Circulate
7-7/8"	4-1/2"	11.6#	11400'	935sx	8500'
					Post ID-1
					12-3-99

22 Describe the proposed program. If this application is to DEEPEN or PLUG BACK, give the data on the present productive zone and proposed new productive zone.
Describe the blowout prevention program, if any. Use additional sheets if necessary.

SEE OTHER SIDE

Minimum WOC time 18 hrs.

²³ I hereby certify that the information given above is true and complete to the best of my knowledge and belief.

Signature:

Printed name: David Stewart

Title: Regulatory Analyst

Date: 12/1/99

Phone: 915-685-5717

OIL CONSERVATION DIVISION

Approved by: ORIGINAL SIGNED BY TIM W. GUM

Title:

Approval Date: 12-2-99

Expiration Date: 12-2-00

Conditions of Approval:

Attached ☐

ATTACHMENT C-101
OXY USA Inc.
OXY Pearl State #2
860 FNL 660 FEL SEC 32 T19S R29E
Eddy County, NM
Lease No.

PROPOSED TD: 11400' TVD

BOP PROGRAM: 0' - 400' None
400' - 3000' 11" 5M blind and pipe rams with 5M annular preventer.
3000' - 11400' 11" 5M blind pipe rams with 5M annular preventer and rotating head below 8500'.

CASING: Surface: 13-3/8" QD 48# H40 ST&C new casing set at 400'
Intermediate: 8-5/8" OD 32# K55 ST&C new casing from 0-3000'
Production: 4-1/2" OD 11.6# N80 LT&C new casing from 0-11400'

CEMENT: Surface - Circulate cement with 350sx 35:65 POZ/C with 6% Bentonite + 2% CaCl_2 followed by 150sx Cl C with 2% CaCl_2 .
Intermediate - Circulate cement with 790sx 35:65 POZ/C with 6% Bentonite + 1% CaCl_2 + 4#/sx Gilsonite followed by 200sx Cl C with 2% CaCl_2 .
Production - Cement with 860sx 15:61:11 POZ/C/CSE with .5% FL-52 + .5% FL-25 + 6#/sx Gilsonite followed by 75sx Cl C with .55% FL-25.
Estimated top of cement is 8500'.

Note: Cement volumes may need to be adjusted to hole caliper.

MUD: 0 - 400' Fresh water/native mud. Lime for pH control (9-10). Paper for seepage.
Wt 8.7-9.2 ppg, Vis 32-34 sec
400' - 3000' Fresh/Brine water. Lime for pH control (10.0-10.5). Paper for seepage.
Wt 8.3-9.0/10.0-10.1ppg, Vis 28-29 sec
3000' - 8800' Fresh water. Lime for pH control (9-9.5). Paper for seepage.
Wt 8.3-8.5 ppg, Vis 28-29 sec
8800' - 10000' Cut brine. Lime for pH control (10-10.5).
Wt 9.6-10.0 ppg, Vis 28-29sec
10000' - 11400' Mud up with an Duo Vis/Flo Trol mud system.
Wt 9.6-10.0ppg, Vis 32-36sec, WL<10cc

DISTRICT I
P.O. Box 1980, Hobbs, NM 88240

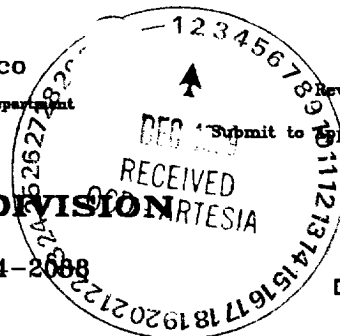
DISTRICT II
P.O. Drawer DD, Artesia, NM 88210

DISTRICT III
1000 Rio Brazos Rd., Aztec, NM 87410

State of New Mexico
Energy, Minerals and Natural Resources Department

OIL CONSERVATION DIVISION

P.O. Box 2088
Santa Fe, New Mexico 87504-2088



Form C-102
Revised February 10, 1994
Instruction on back
Submit to appropriate District Office
State Lease - 4 Copies
Fee Lease - 3 Copies

☐ AMENDED REPORT

WELL LOCATION AND ACREAGE DEDICATION PLAT

API Number 30-015-	Pool Code 82600	Pool Name Parkway Morrow, West
Property Code 21438	Property Name OXY PEARL STATE	Well Number 2
OGRID No. 16696	Operator Name OXY USA INC.	Elevation 3280'

Surface Location

UL or lot No.	Section	Township	Range	Lot Idn	Feet from the	North/South line	Feet from the	East/West line	County
A	32	19 S	29 E		860	NORTH	660	EAST	EDDY

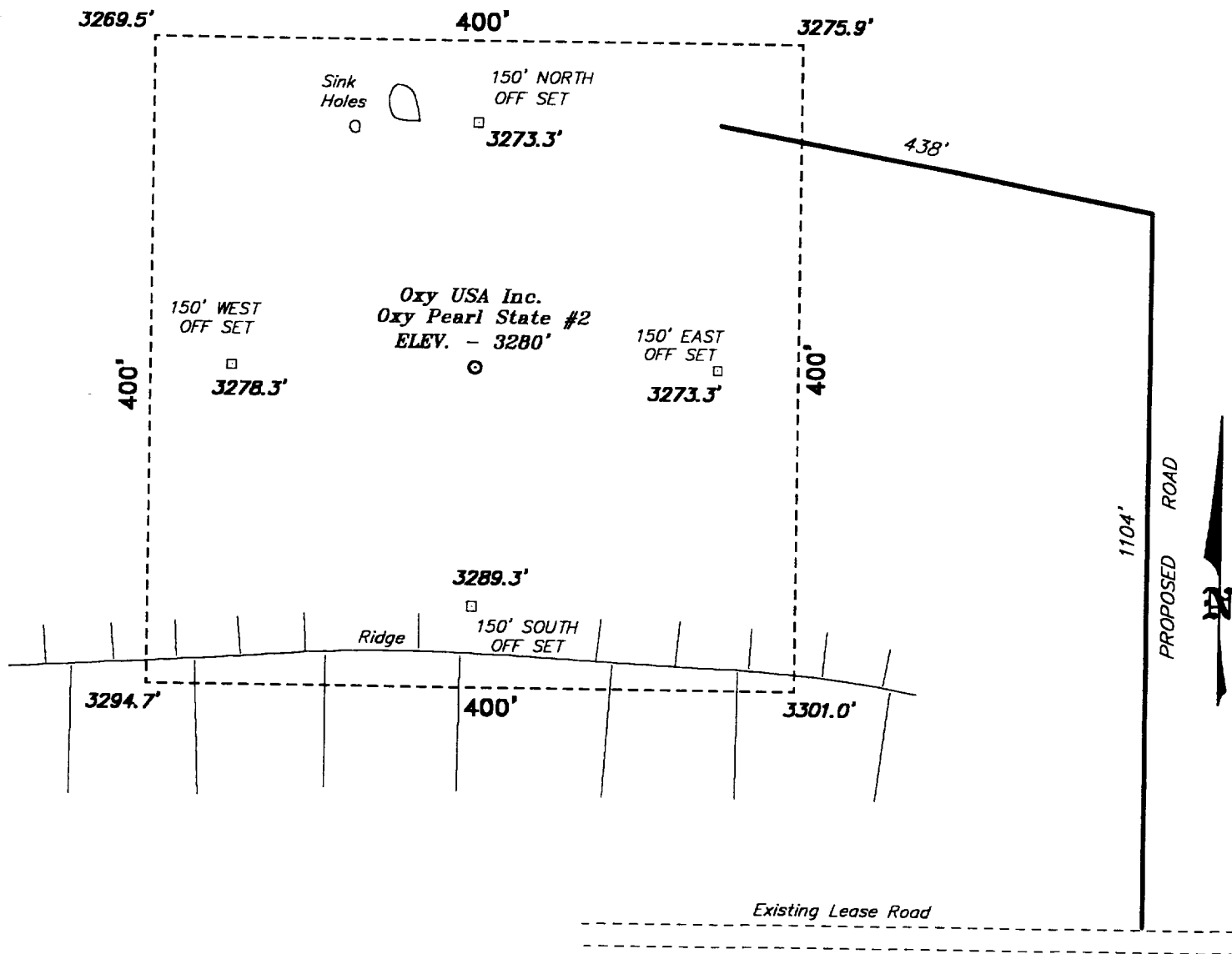
Bottom Hole Location If Different From Surface

UL or lot No.	Section	Township	Range	Lot Idn	Feet from the	North/South line	Feet from the	East/West line	County
Dedicated Acres 320	Joint or Infill Y	Consolidation Code	Order No.						

NO ALLOWABLE WILL BE ASSIGNED TO THIS COMPLETION UNTIL ALL INTERESTS HAVE BEEN CONSOLIDATED
OR A NON-STANDARD UNIT HAS BEEN APPROVED BY THE DIVISION

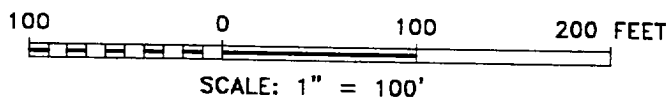
	OPERATOR CERTIFICATION I hereby certify the the information contained herein is true and complete to the best of my knowledge and belief. Signature David Stewart Printed Name Regulatory Analyst Title 12/1/99 Date
	SURVEYOR CERTIFICATION I hereby certify that the well location shown on this plat was plotted from field notes of actual surveys made by me or under my supervision, and that the same is true and correct to the best of my belief. November 29, 1999 Date Surveyed Signature & Seal of Professional Surveyor Certificate No. 94174 BASIN SURVEYS

SECTION 32, TOWNSHIP 19 SOUTH, RANGE 29 EAST, N.M.P.M.,
EDDY COUNTY, NEW MEXICO.



Directions to Location:

FROM JUNCTION CO. RD. 243 & US 62/180, GO
NORTH ON CO. RD. 243 APPROX. 6.5 MILES TO CO.
RD. 238; THENCE WEST APPROX. 1.75 MILE ON CO.
RD. 238 TO CO. RD. 242; THENCE NORTH ON CO.
RD. 242 APPROX. 3.0 MILES TO A POINT WHICH LIES
APPROX. 2.0 MILES WEST OF THE PROPOSED WELL
LOCATION.



Oxy USA Inc.

REF: Oxy Pearl State No. 2 / Well Pad Topo

THE OXY PEARL STATE No. 2 LOCATED 860' FROM
THE NORTH LINE AND 660' FROM THE EAST LINE OF
SECTION 32, TOWNSHIP 19 SOUTH, RANGE 29 EAST,
N.M.P.M., EDDY COUNTY, NEW MEXICO.

BASIN SURVEYS P.O. BOX 1786-HOBBS, NEW MEXICO

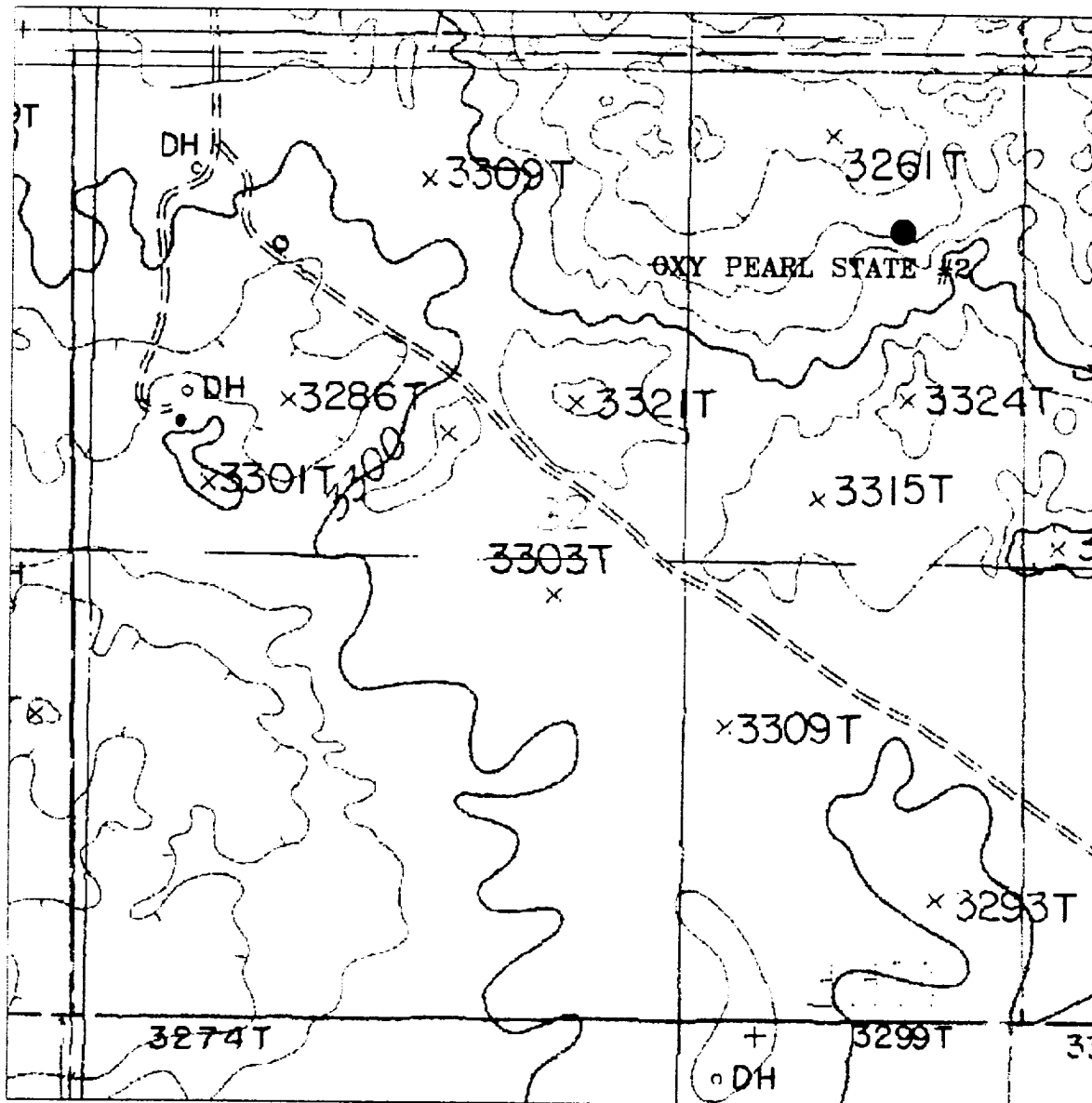
W.O. Number: 9416

Drawn By: K. GOAD

Date: 11-29-99

Disk: KJG #122 - 9416A.DWG

Survey Date: 11-24-99



OXY PEARL STATE #2

Located at 860' FNL and 660' FEL

Section 32, Township 19 South, Range 29 East,
N.M.P.M., Eddy County, New Mexico.



P.O. Box 1786
1120 N. West County Rd.
Hobbs, New Mexico 88241
(505) 393-7316 - Office
(505) 392-3074 - Fax
basinsurveys.com

W.O. Number: 9417AA - KJG #122

Survey Date: 11-29-99

Scale: 1" = 1000'

Date: 11-30-99

OXY USA INC.