

District I
PO Box 1980, Hobbs, NM 88241-1980

District II
811 South First, Artesia, NM 88210

District III
1000 Rio Brazos Rd., Aztec, NM 87410

District IV
2040 South Pacheco, Santa Fe, NM 87505

State of New Mexico
Energy, Minerals & Natural Resources Department

OIL CONSERVATION DIVISION
2040 South Pacheco
Santa Fe, NM 87505

Form C-101
Revised October 18, 1994
Instructions on back
Submit to Appropriate District Office
State Lease - 6 Copies
Fee Lease - 5 Copies

☐ AMENDED REPORT

APPLICATION FOR PERMIT TO DRILL, RE-ENTER, DEEPEN, PLUG BACK, OR ADD A ZONE

Operator Name and Address Nearburg Producing Company 3300 N A St., Bldg 2, Suite 120 Midland, TX 79705		OGRID Number 015742
Property Code 15753		API Number 30-015-30869
Property Name South Boyd 27		Well No. 10

Surface Location

UL or lot no.	Section	Township	Range	Lot Idn	Feet from the	North/South line	Feet from the	East/West Line	County
A	27	19S	25E		510	North	990	East	Eddy

Proposed Bottom Hole Location If Different From Surface

UL or lot no.	Section	Township	Range	Lot Idn	Feet from the	North/South line	Feet from the	East/West Line	County
Proposed Pool 1 Cemetery: Morrow					Proposed Pool 2				

Work Type Code N	Well Type Code G	Cable/Rotary R	Lease Type Code P	Ground Level Elevation 3443
Multiple No	Proposed Depth 9500	Formation Morrow	Contractor Patterson	Spud Date 12-01-99

Minimum WOC time 8 hrs.

Proposed Casing and Cement Program

Hole Size	Casing Size	Casing weight/foot	Setting Depth	Sacks of Cement	Estimated TOC
14-3/4"	9-5/8"	36#	1,100'	1,000 sx	Circ
8-3/4" & 7-7/8"	7" & 5-1/2"	26# & 20#	9,500'	1,200 sx	Circ
					Past T.D. - 1
					12-24-99
					APV 400

Describe the proposed program. If this application is to DEEPEN or PLUG BACK give the data on the present productive zone and proposed new productive zone. Describe the blowout prevention program, if any. Use additional sheets if necessary.

Propose to drill the well to sufficient depth to evaluate the Morrow formation. After reaching TD, logs will be run and casing set if the evaluation is positive. Perforate, test and stimulate as necessary to establish production.

Acreage dedication is 320 acres: N/2 of Section 27.

Notify OCD at SPUD & TIME
to witness cementing the
9 5/8" casing.

I hereby certify that the information given above is true and complete to the best of my knowledge and belief.

Signature: *Blair M. Wisenbaker*

Printed name: Blair M. Wisenbaker

Title: Sr. Petroelum Engineer

Date: 10-28-99

Phone: 915/ 686-8235

OIL CONSERVATION DIVISION

Approved By:

ORIGINAL SIGNED BY TIM W. GUM

Title:

DISTRICT II SUPERVISOR

Approval Date:

12-16-99

Expiration Date:

12-16-00

Conditions of Approval:

Attached: ☐

DISTRICT II
P.O. Drawer DD, Artesia, NM 88211-0719

DISTRICT III
1000 Rio Brazos Rd., Aztec, NM 87410

DISTRICT IV
P.O. BOX 2088, SANTA FE, N.M. 87504-2088

OIL CONSERVATION DIVISION
P.O. Box 2088
Santa Fe, New Mexico 87504-2088

☐ AMENDED REPORT

WELL LOCATION AND ACREAGE DEDICATION PLAT

API Number		Pool Code	Pool Name Cemetery:Morrow	
Property Code	Property Name SOUTH BOYD 27		Well Number 10	
OGRID No. 015742	Operator Name NEARBURG PRODUCING COMPANY		Elevation 3443	

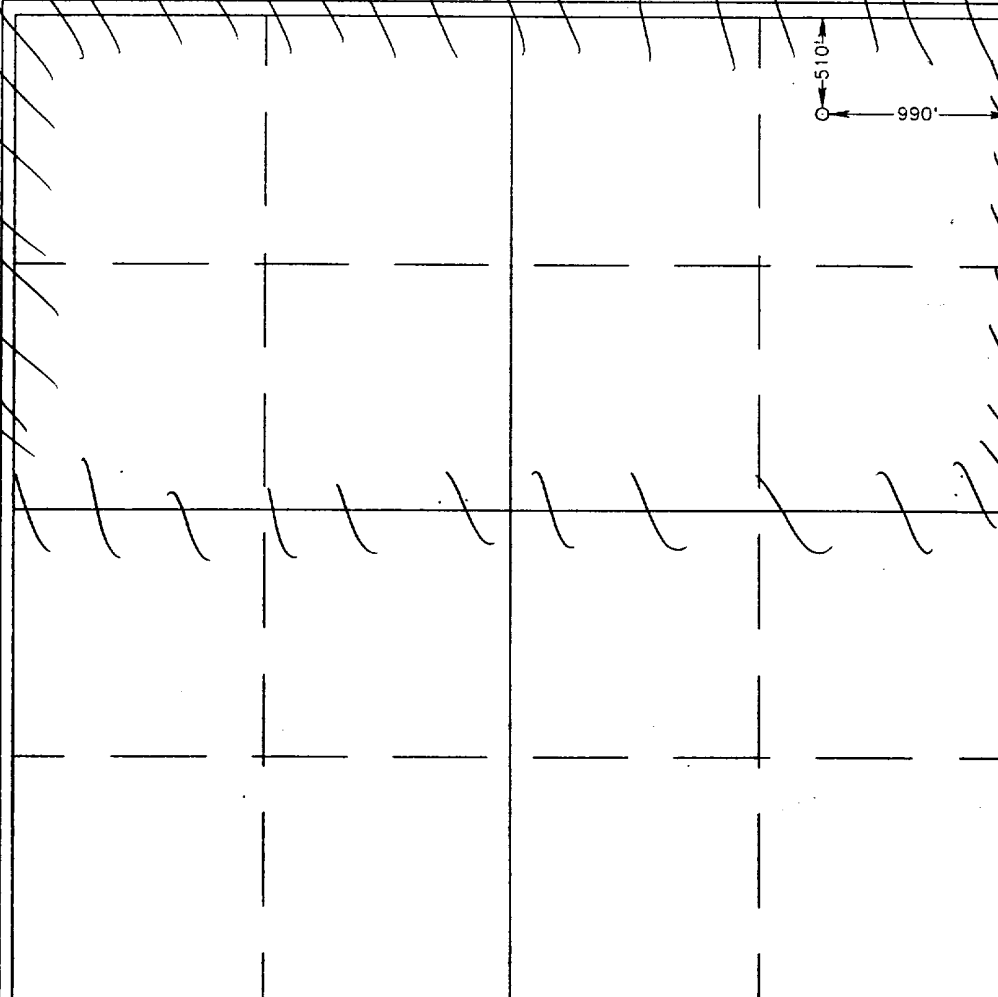
Surface Location

UL or lot No. A	Section 27	Township 19 S	Range 25 E	Lot Idn	Feet from the 510	North/South line NORTH	Feet from the 990	East/West line EAST	County EDDY
---------------------------	----------------------	-------------------------	----------------------	---------	-----------------------------	----------------------------------	-----------------------------	-------------------------------	-----------------------

Bottom Hole Location If Different From Surface

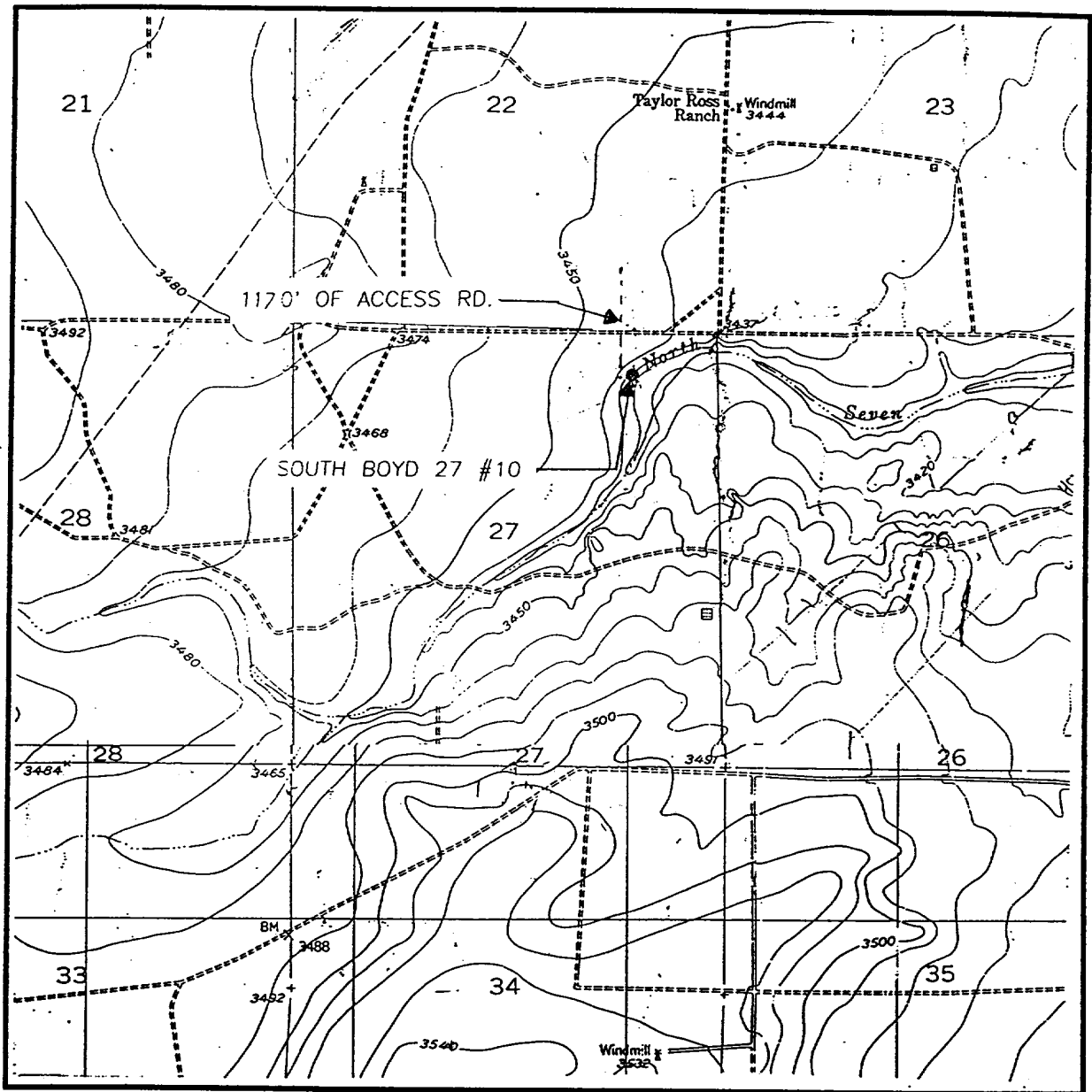
UL or lot No.	Section	Township	Range	Lot Idn	Feet from the	North/South line	Feet from the	East/West line	County
Dedicated Acres 320	Joint or Infill N	Consolidation Code		Order No.					

NO ALLOWABLE WILL BE ASSIGNED TO THIS COMPLETION UNTIL ALL INTERESTS HAVE BEEN CONSOLIDATED
OR A NON-STANDARD UNIT HAS BEEN APPROVED BY THE DIVISION



OPERATOR CERTIFICATION	
I hereby certify the the information contained herein is true and complete to the best of my knowledge and belief.	
Blak Wisenbaker Signature	
Blak Wisenbaker Printed Name	
Sr. Petroleum Engineer Title	
11-1-99 Date	
SURVEYOR CERTIFICATION	
I hereby certify that the well location shown on this plat was plotted from field notes of actual surveys made by me or under my supervision, and that the same is true and correct to the best of my belief.	
OCTOBER 19, 1999	
Date Surveyed	
Signature & Seal of Professional Surveyor	
RONALD E. EIDSON Professional Surveyor	
11-23-99 Date	
Certificate No. RONALD E. EIDSON 3239 RONALD E. EIDSON 2541 RONALD E. EIDSON 2185	

LOCATION VERIFICATION MAP



SCALE: 1" = 2000'

CONTOUR INTERVAL:
SEVEN RIVERS - 10'
DAYTON - 10'

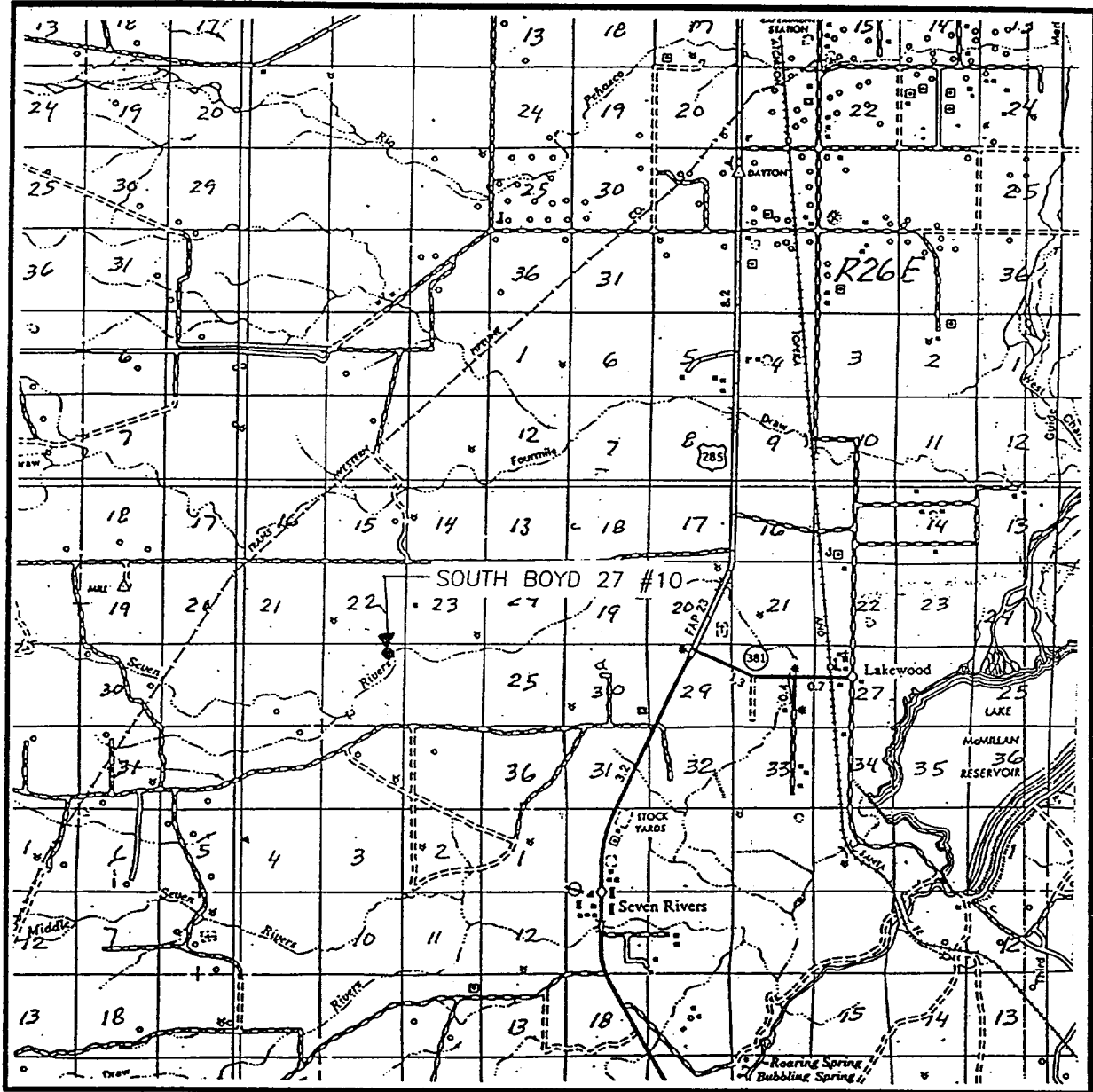
SEC. 27 TWP. 19-S RGE. 25-E
SURVEY N.M.P.M.
COUNTY EDDY
DESCRIPTION 510' FNL & 990' FEL
ELEVATION 3443
NEARBURG
OPERATOR PRODUCING COMPANY
LEASE SOUTH BOYD 27

U.S.G.S. TOPOGRAPHIC MAP
SEVEN RIVERS, DAYTON, N.M.

JOHN WEST SURVEYING
HOBBS, NEW MEXICO
(505) 393-3117

VEINITY MAP

VICINITY MAP



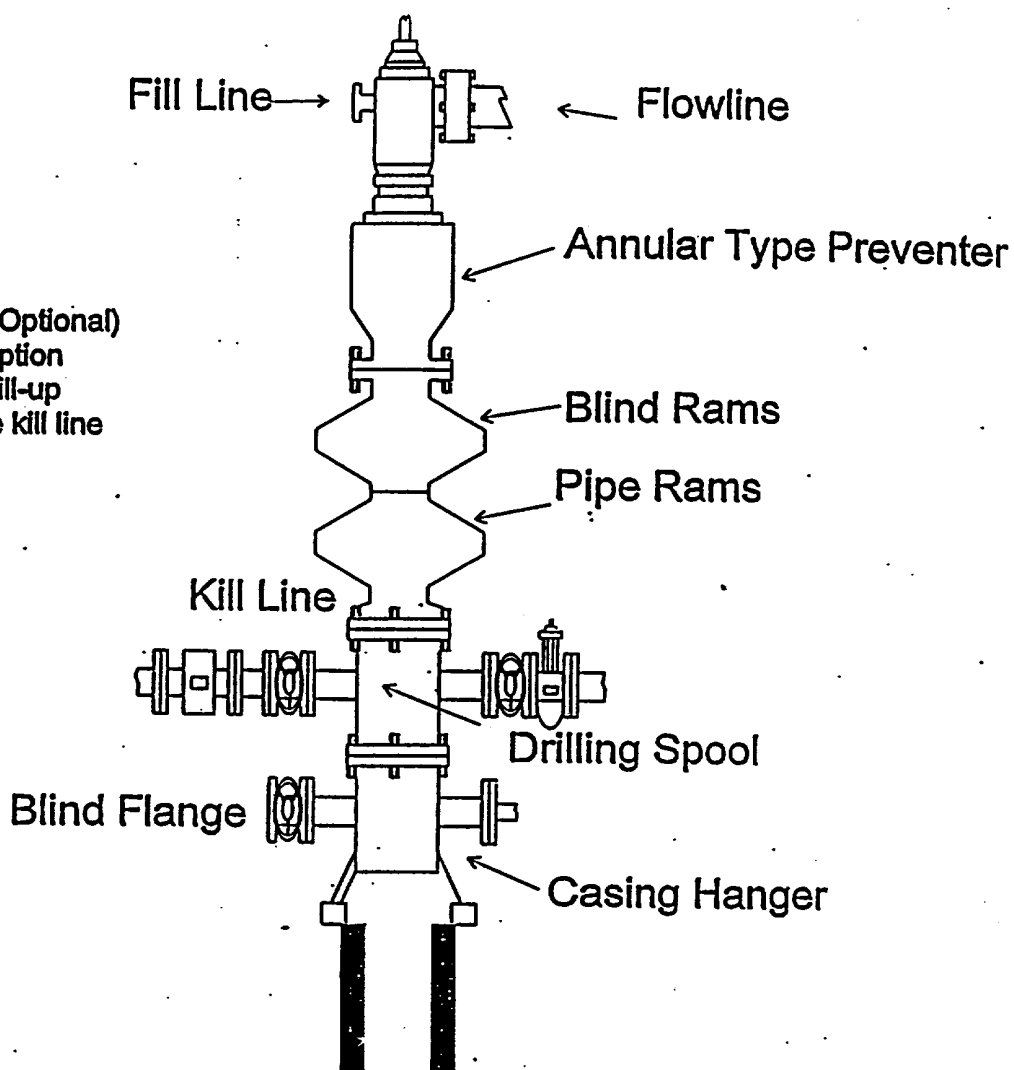
SCALE: 1" = 2 MILES

SEC. 27 TWP. 19-S RGE. 25-E
 SURVEY N.M.P.M.
 COUNTY EDDY
 DESCRIPTION 510' FNL & 990' FEL
 ELEVATION 3443
 NEARBURG
 OPERATOR PRODUCING COMPANY
 LEASE SOUTH BOYD 27

JOHN WEST SURVEYING
HOBBS, NEW MEXICO
(505) 393-3117

BOPE SCHEMATIC

Rotating Head (Optional)
Drilling Nipple option
must include a fill-up
line. Do not use kill line
for fill up.



1500 Series