

UNITED STATES
DEPARTMENT OF THE INTERIOR
BUREAU OF LAND MANAGEMENT

APPLICATION FOR PERMIT TO DRILL OR DEEPEN

1a. TYPE OF WORK

DRILL ☒

DEEPEN ☐

b. TYPE OF WELL

OIL WELL ☒

GAS WELL ☐

OTHER

SINGLE ZONE ☒

MULTIPLE ZONE ☐

2. NAME OF OPERATOR

CONCHO RESOURCES INC. (JIM BLOUNT)

915-683-7445

3. ADDRESS AND TELEPHONE NO.

110 WEST LOUISIANA SUITE 410 MIDLAND, TEXAS 79701

4. LOCATION OF WELL (Report location clearly and in accordance with any State requirements.)

At surface
822' FSL & 2310' FWL SEC. 29 T18S-R31E EDDY CO. NM
At proposed prod. zone SAME

W.N.

14. DISTANCE IN MILES AND DIRECTION FROM NEAREST TOWN OR POST OFFICE*

Approximately 10 miles Southeast of Loco Hills NM.

15. DISTANCE FROM PROPOSED*

LOCATION TO NEAREST PROPERTY OR LEASE LINE, FT. 822'

16. NO. OF ACRES IN LEASE

1280

17. NO. OF ACRES ASSIGNED TO THIS WELL

40

18. DISTANCE FROM PROPOSED LOCATION* TO NEAREST WELL, DRILLING, COMPLETED, OR APPLIED FOR, ON THIS LEASE, FT. 660'

19. PROPOSED DEPTH

6100'

20. ROTARY OR CABLE TOOLS

ROTARY

21. ELEVATIONS (Show whether DF, RT, GR, etc.)

3583' GR.

22. APPROX. DATE WORK WILL START*

As soon as approved

PROPOSED CASING AND CEMENTING PROGRAM

SIZE OF HOLE	GRADE, SIZE OF CASING	WEIGHT PER FOOT	SETTING DEPTH	QUANTITY OF CEMENT
25"	20" Cond.	NA	40'	Redi-mix Cement to surface
17 1/2"	H-40 13 3/8"	48	450'	450 Sx. Circulate to surface
11"	K-55 8 5/8"	32	2800'	710 Sx. " " "
7 7/8"	K-55 5 1/2"	15.5	6100'	550 Sx. Estimate top C 3400'

1. Drill 25" hole to 40'. Set 40' of 20" conductor pipe and cement to surface with Redi-mix.
2. Drill 17 1/2" hole to 450'. Run and set 450' of 13 3/8" 48# H-40 ST&C casing. Cement with 450 Sx. of Class "C" cement + 2% CaCl, circulate cement to surface.
3. Drill 11" hole to 2800'. Run and set 2800' of 8 5/8" 32# K-55 ST&C CASING. Cement with 510 Sx. of 35/65 POZ Class "C" + 12% salt + 1# flocele/Sx. + 1# gilsonite/Sx. + 6% bentonite, tail in with 200 Sx. of Class "C" + 2% CaCl, circulate cement to surface.
4. Drill 7 7/8" hole to 6100'. Run and set 6100' of 5 1/2" 15.5# K-55 LT&C casing. Cement with 200 Sx. of 35/65 POZ + 12% salt + 1# flocele/Sx. + 1# gilsonite/Sx. + 6% bentonite tail in with 350 Sx. of Class "C". TOC 3400'

IN ABOVE SPACE DESCRIBE PROPOSED PROGRAM: If proposal is to deepen, give data on present productive zone and proposed new productive zone. If proposal is to drill or deepen directionally, give pertinent data on subsurface locations and measured and true vertical depths. Give blowout preventer program, if any.

24.

SIGNED

Joe T. Janice

TITLE Agent

DATE 11/11/99

(This space for Federal or State office use)

PERMIT NO.

APPROVAL DATE

APPROVAL SUBJECT TO
GENERAL REQUIREMENTS AND
SPECIAL STIPULATIONS

Application approval does not warrant or certify that the applicant holds legal or equitable title to those rights in the subject lease which would entitle the applicant to the operations thereon.

CONDITIONS OF APPROVAL, IF ANY:

Assistant Field Office Manager
Lands and Minerals

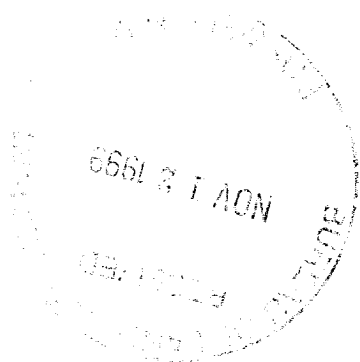
APPROVED BY

TITLE

DATE

*See Instructions On Reverse Side

200



DISTRICT I
P.O. Box 1980, Hobbs, NM 88241-1980

DISTRICT II
P.O. Drawer DD, Artesia, NM 88211-0719

DISTRICT III
1000 Rio Brazos Rd., Aztec, NM 87410

DISTRICT IV
P.O. BOX 2088, SANTA FE, N.M. 87504-2088

State of New Mexico
Energy, Minerals and Natural Resources Department

Form C-102
Revised February 10, 1994
Submit to Appropriate District Office
State Lease - 4 Copies
Fee Lease - 3 Copies

OIL CONSERVATION DIVISION

P.O. Box 2088
Santa Fe, New Mexico 87504-2088

☐ AMENDED REPORT

WELL LOCATION AND ACREAGE DEDICATION PLAT

API Number	Pool Code	Pool Name
		SHUGART WEST-DELAWARE
Property Code	Property Name	Well Number
	WEST SHUGART 29 FEDERAL	4
OGRID No.	Operator Name	Elevation
166111	CONCHO RESOURCES INC.	3583

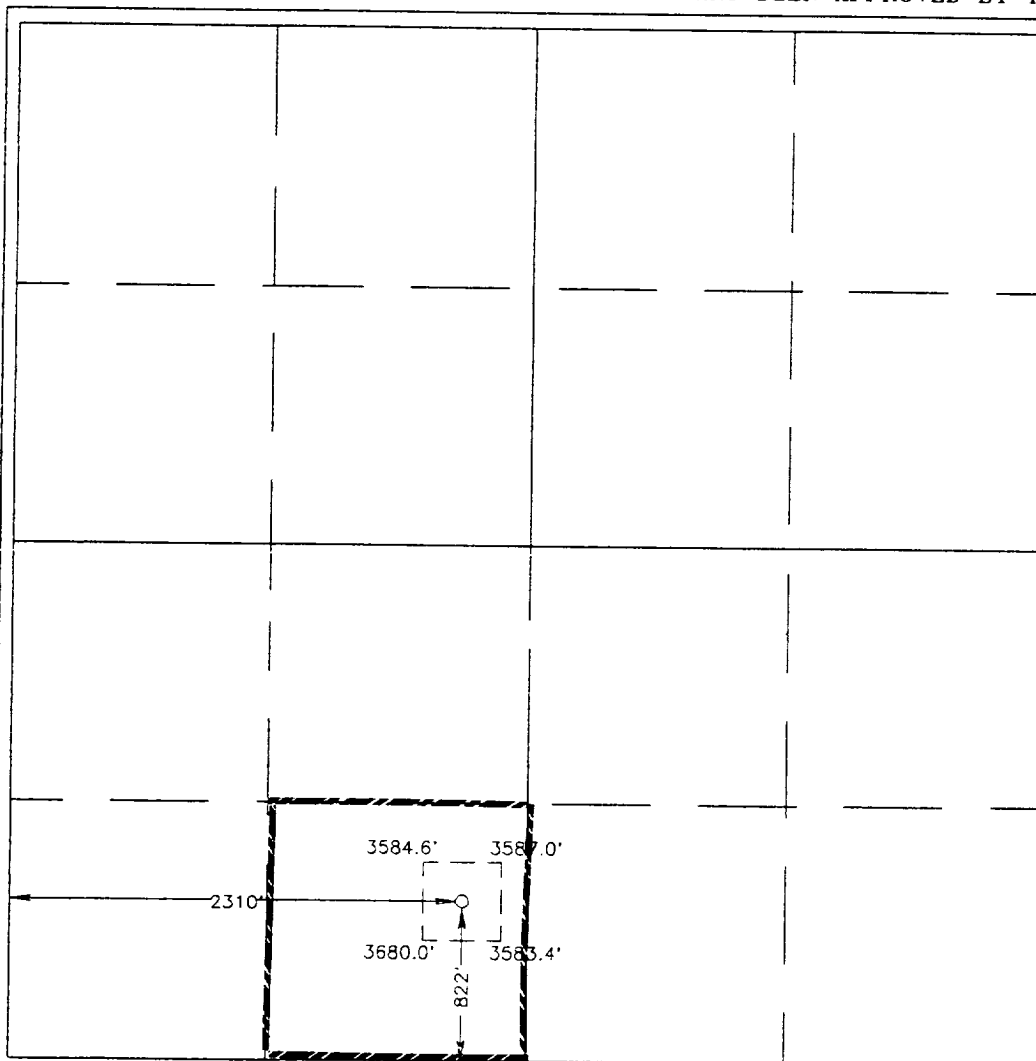
Surface Location

UL or lot No.	Section	Township	Range	Lot Idn	Feet from the	North/South line	Feet from the	East/West line	County
N	29	18 S	31 E		822	SOUTH	2310	WEST	EDDY

Bottom Hole Location If Different From Surface

UL or lot No.	Section	Township	Range	Lot Idn	Feet from the	North/South line	Feet from the	East/West line	County
Dedicated Acres	Joint or Infill	Consolidation Code	Order No.						
40									

NO ALLOWABLE WILL BE ASSIGNED TO THIS COMPLETION UNTIL ALL INTERESTS HAVE BEEN CONSOLIDATED
OR A NON-STANDARD UNIT HAS BEEN APPROVED BY THE DIVISION



OPERATOR CERTIFICATION

I hereby certify the the information
contained herein is true and complete to the
best of my knowledge and belief.

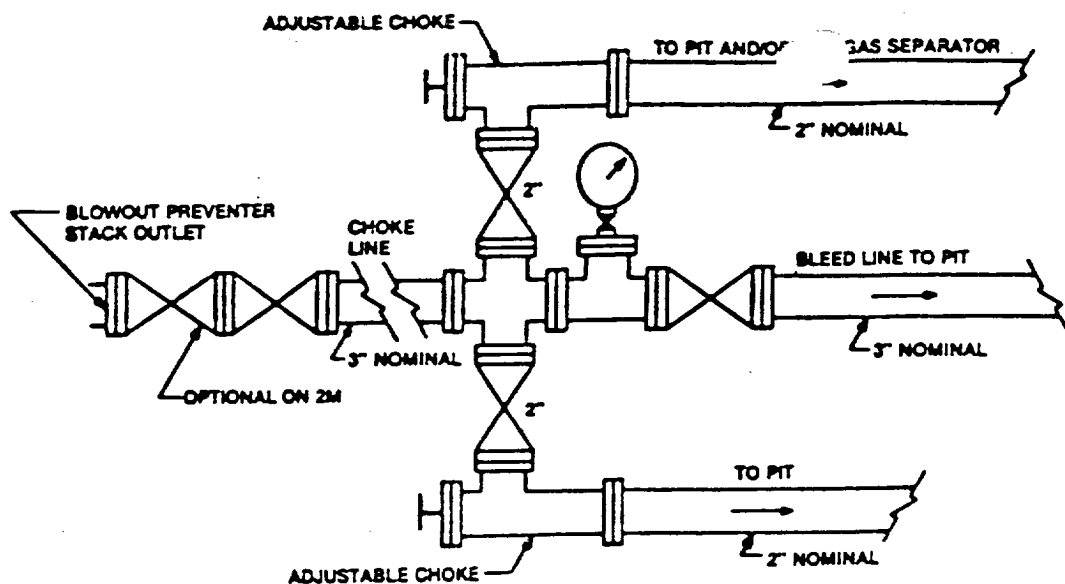
Joe T. Janica
Signature
Joe T. Janica
Printed Name
Agent
Title
11/11/99
Date

SURVEYOR CERTIFICATION

I hereby certify that the well location shown
on this plat was plotted from field notes of
actual surveys made by me or under my
supervision and that the same is true and
correct to the best of my belief.

NOVEMBER 4, 1999

Date Surveyed
Signature & Seal of Professional Surveyor
RONALD J. EIDSON
Certification No. RONALD J. EIDSON 3239
12641
MAGNUS MCDONALD 12155



Typical choke manifold assembly for 3M WP system

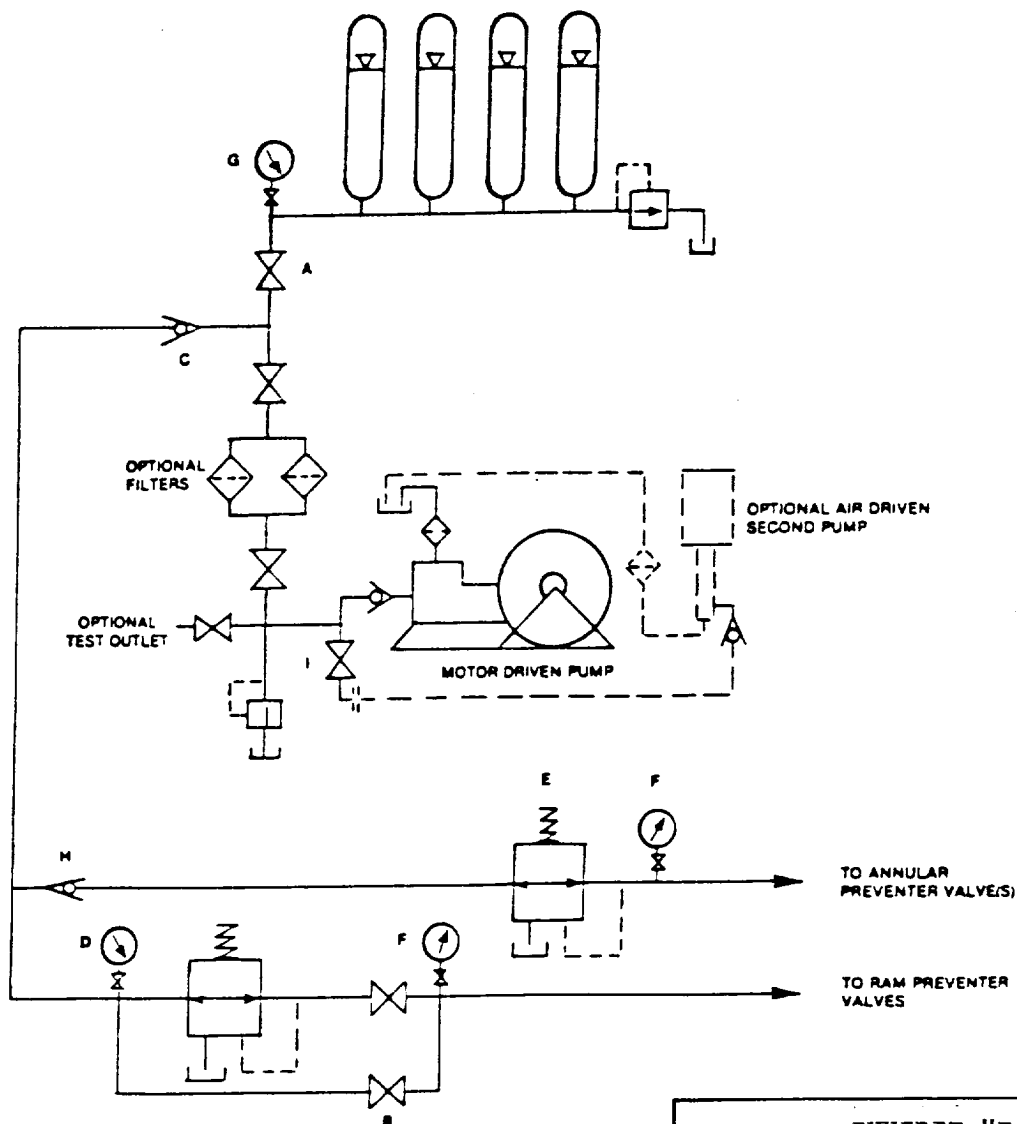


EXHIBIT "E-1"
CHOKE MANIFOLD & CLOSING UNIT

CONCHO RESOURCES, INC.
WEST SHUGART "29" FEDERAL # 4
UNIT "N" SECTION 29
T18S-R31E LEA CO. NM