

FIGURE K6-1. The schematic sketch of an accumulator system shows required and optional components.

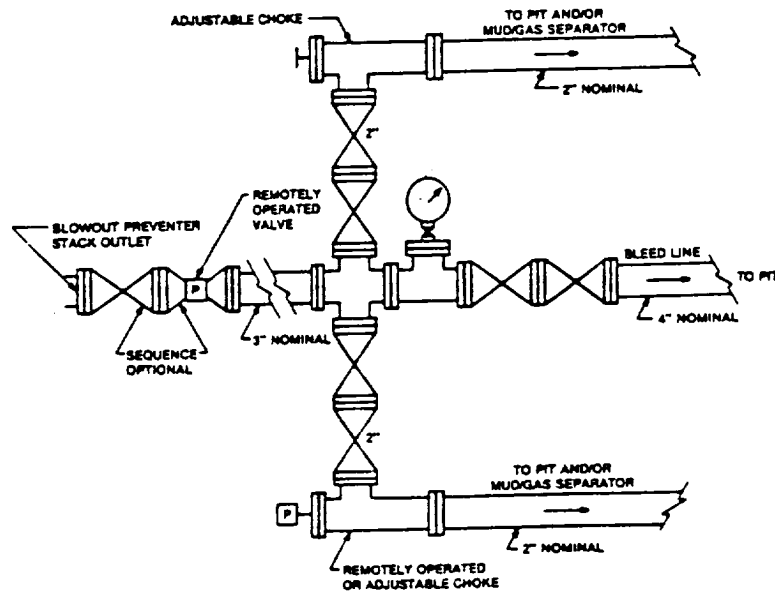


FIGURE K4-2. Typical choke manifold assembly for 5M rated working pressure service — surface installation.

EXHIBIT "E-1"  
CHOKE MANIFOLD & CLOSING UNIT

OCEAN ENERGY, INC.  
SHUGART "21" FEDERAL # 1  
UNIT "J" SECTION 21  
T18S-R31E EDDY CO. NM