

N. M. C. 10-1-1004

APPROVED FOR REENTRY

CHP

Form 3160-3
(August 1999)

UNITED STATES
DEPARTMENT OF THE INTERIOR
BUREAU OF LAND MANAGEMENT

APPLICATION FOR PERMIT TO DRILL OR REENTER

FORM APPROVED
OMB No. 1004-0136
Expires November 30, 2000

5. Lease Serial No.

LC 029389 (A)

6. If Indian, Allottee or Tribe Name

7. If Unit or CA Agreement, Name and No.

8. Lease Name and Well No.

BAISH FEDERAL NO. 9 1239

9. API Well No.

30-015-30954

10. Field and Pool, or Exploratory

SHUGART BONE SPRING, NORTH

11. Sec., T., R., M., or Blk. and Survey or Area

SEC 9 - 18S - 31E

12. County or Parish.

EDDY

13. State

NM

1a. Type of Work: ☒ DRILL

☐ REENTER

1b. Type of Well: ☒ Oil Well ☐ Gas Well ☐ Other

☒ Single Zone ☐ Multiple Zone

2. Name of Operator

ANADARKO PETROLEUM CORPORATION

3a. Address

P O BOX 2497, MIDLAND TX 79702

3b. Phone No. (include area code)

817 915/682-1666

4. Location of Well (Report location clearly and in accordance with any State requirements. *)

At surface 660' FSL & 1980' FEL

U.L. 0

At proposed prod. zone SAME

14. Distance in miles and direction from nearest town or post office*

7 MILES SOUTHEAST FROM LOCO HILLS

15. Distance from proposed* location to nearest property or lease line, ft. (Also to nearest drig. unit line, if any)

660'

(660')

16. No. of Acres in lease

440

17. Spacing Unit dedicated to this well

40 ACRES

18. Distance from proposed location* to nearest well, drilling, completed, applied for, on this lease, ft.

1271'

19. Proposed Depth

9300

20. BLM/BIA Bond No. on file

153571

21. Elevations (Show whether DF, KDB, RT, GL, etc.)

3697' GL

22. Approximate date work will start*

DECEMBER 27, 1999

23. Estimated duration

30 DAYS

24. Attachments

Post 2-11-00

The following, completed in accordance with the requirements of Onshore Oil and Gas Order No.1, shall be attached to this form:

1. Well plat certified by a registered surveyor.

2. A Drilling Plan.

3. A Surface Use Plan (if the location is on National Forest System Lands, the SUPO shall be filed with the appropriate Forest Service Office).

4. Bond to cover the operations unless covered by an existing bond on file (see item 20 above).

5. Operator certification.

6. Such other site specific information and/or plans as may be required by the authorized officer.

25. Signature

George R S Buehler

Name (Printed/Typed)

GEORGE R. S. BUEHLER

Date

12-10-99

Title

STAFF DRILLING ENGINEER

Approved by (Signature)

Assistant Field Manager

Name (Printed/Typed)

Date

JAN 10 2000

Title

Assistant Field Manager,
Lands And Minerals

Office

Application approval does not warrant or certify the the applicant holds legal or equitable title to those rights in the subject lease which would entitle the applicant to conduct operations thereon.

Conditions of approval, if any, are attached.

Title 18 U.S.C. Section 1001 and Title 43 U.S.C. Section 1212, make it a crime for any person knowingly and willfully to make to any department or agency of the United States any false, fictitious or fraudulent statements or representations as to any matter within its jurisdiction.

*(Instructions on reverse)

DISTRICT II
F.O. Brewer ED, Artesia, NM 88211-0719

Energy, Minerals and Natural Resources Department

Revised February 10, 1994
Submit to Appropriate District Office
State Lease - 4 Copies
Fee Lease - 3 Copies

DISTRICT III
1000 Elie Branson Rd., Aztec, NM 87410

OIL CONSERVATION DIVISION

P.O. Box 2088

Santa Fe, New Mexico 87504-2088

DISTRICT IV
P.O. BOX 2068, SANTA FE, N.M. 87504-2068

☐ AMENDED REPORT

WELL LOCATION AND ACREAGE DEDICATION PLAT

API Number		Pool Code	Pool Name
		56405	SHUGART BONE SPRING, NORTH
Property Code	Property Name		Well Number
	BAISH FEDERAL		9
OGRID No.	Operator Name		Elevation
000817	ANADARKO PETROLEUM CORPORATION		3697

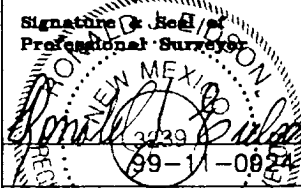
Surface Location

UL or lot No.	Section	Township	Range	Lot Idn	Feet from the	North/South line	Feet from the	East/West line	County
0	9	18 S	31 E		660	SOUTH	1980	EAST	EDDY

Bottom Hole Location If Different From Surface

UL or lot No.	Section	Township	Range	Lot Idn	Feet from the	North/South line	Feet from the	East/West line	County
Dedicated Acres 40	Joint or Infill	Consolidation Code	Order No.						

NO ALLOWABLE WILL BE ASSIGNED TO THIS COMPLETION UNTIL ALL INTERESTS HAVE BEEN CONSOLIDATED
OR A NON-STANDARD UNIT HAS BEEN APPROVED BY THE DIVISION

		<p align="center">OPERATOR CERTIFICATION</p> <p><i>I hereby certify the information contained herein is true and complete to the best of my knowledge and belief.</i></p> <p align="right"><u><i>George R. S. Buehler</i></u> Signature</p> <p>GEORGE R. S. BUEHLER Printed Name</p> <p>STAFF DRILLING ENGINEER Title</p> <p>DECEMBER 10, 1999 Date</p>
	<div style="margin-bottom: 20px;"> <p>3705.3' 3699.3'</p> <div style="border: 1px solid black; width: 40px; height: 40px; margin: 0 auto; position: relative;"> <div style="position: absolute; top: 50%; left: 50%; transform: translate(-50%, -50%);">O</div> </div> <p>3693.1' 3694.8'</p> <p><u>DETAIL</u></p> </div> <div> <div style="border: 2px dashed black; width: 150px; height: 150px; margin: 0 auto; position: relative;"> <div style="position: absolute; top: 50%; left: 50%; transform: translate(-50%, -50%);">SEE DETAIL</div> </div> <div style="position: absolute; top: 50%; left: 50%; transform: translate(-50%, -50%);"> <p>1980'</p> <p>860'</p> </div> </div>	<p align="center">SURVEYOR CERTIFICATION</p> <p><i>I hereby certify that the well location shown on this plat was plotted from field notes of actual surveys made by me or under my supervision, and that the same is true and correct to the best of my belief.</i></p> <p align="center">NOVEMBER 4, 1999</p> <p>Date Surveyed _____ DC</p> <p>Signature & Seal of Professional Surveyor  </p> <p>Certificate No. RONALD J. EIDSON 3239 GARY EIDSON 12641 WACON MACDONALD 12165</p>



DRILLING CO., INC. - OIL WELL DRILLING CONTRACTORS

P. O. BOX 1498 ROSWELL, NEW MEXICO 88202-1498

505/623-5070

ROSWELL, NM

505/746-2719

ARTEBIA, NM

EXHIBIT 1

Baish Federal No. 9
Eddy County, New Mexico
Anadarko Petroleum Corporation

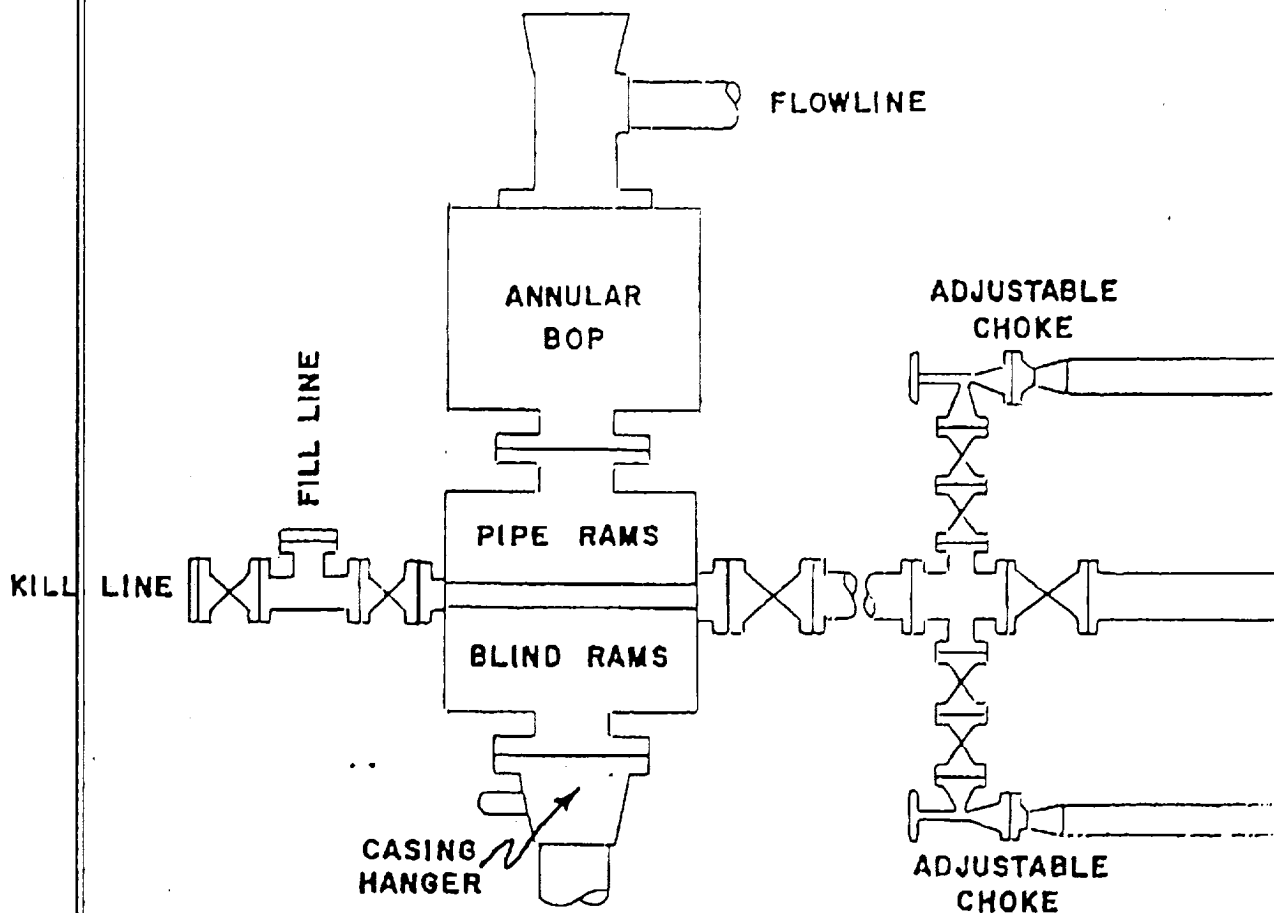
BOP & Choke Manifold**BLOWOUT PREVENTOR ARRANGEMENT**

11" SHAFFER TYPE LWS, 5000 psi WP

11" CAMERON SPHERICAL, 5000 psi WP

120 GALLON, 5 STATION KOOMEY ACCUMULATOR

5000 psi WP CHOKE MANIFOLD



Attachment to Exhibit #1
Attachment to Form 3160-3
Anadarko Petroleum Corporation
Baish Federal No. 9
660' FSL & 1980' FEL
Section 9, T18S, R31E
Eddy County, New Mexico

1. Drilling nipple will be constructed so it can be removed mechanically without the aid of a welder. The minimum internal diameter will equal BOP bore.
2. Wear ring will be properly installed in head.
3. Blowout preventor and all associated fittings will be in operable condition to withstand a minimum 3000 psi working pressure.
4. All fittings will be flanged.
5. A full bore safety valve tested to a minimum 3000 psi WP with proper thread connections will be available on the rotary rig floor at all times.
6. All BOP equipment will be equal to or larger in bore than the internal diameter of the last casing string.
7. Will maintain a kelly cock attached to the kelly.
8. Hand wheels and wrenches will be properly installed and tested for safe operation.
9. All BOP equipment will meet API standards and include a minimum 40 gallon accumulator having two independent means of power to initiate closing operation.

DRILLING PROGRAM

Attachment to Form 3160-3
Anadarko Petroleum Corporation
Baish Federal No. 9
660' FSL & 1980' FEL
Section 9, T18S, R31E
Eddy County, New Mexico

1. Geologic Name of Surface Formation

Quaternary Alluvium

2. Estimated Tops of Important Geological Formations

Top of Salt Section	780'
Base of Salt Section	1800'
Yates	1800'
Queen	3182'
San Andres	4222'
Bone Spring	5815'
Bone Spring Sand	7552'
Bone Spring 2 nd Carbonate	7822'
Bone Spring 2 nd Sand	8077'
Bone Spring 3 rd Sand	8762'

3. Estimated Depths of Anticipated Fresh Water, Oil or Gas

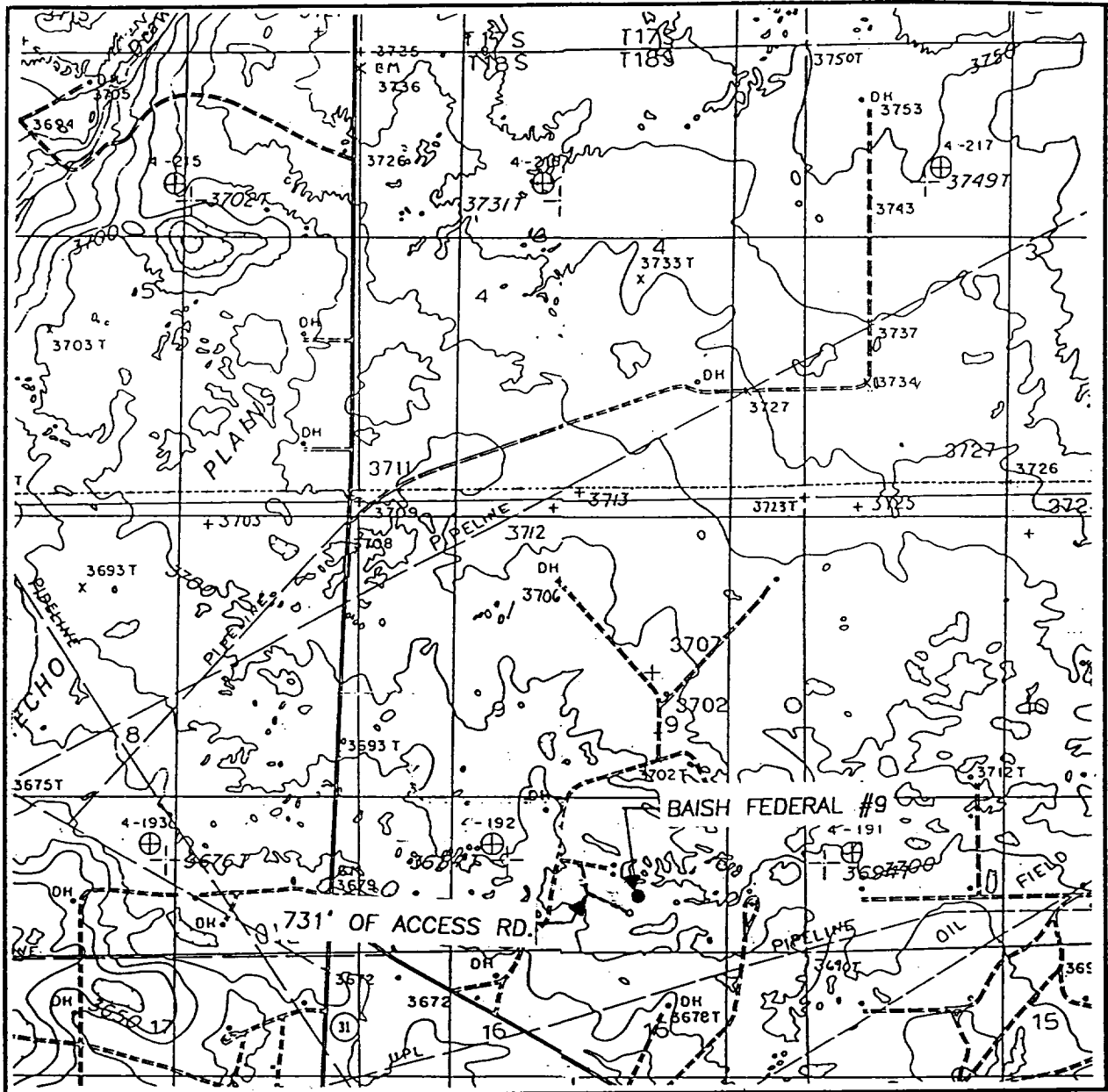
Water: None Anticipated
Oil: 3182', 7822', 8077'
Gas: Very Little Anticipated

No other formations are expected to yield oil, gas or fresh water in measurable volumes. Any surface fresh water sands will be protected by setting 13-3/8" casing at 700' and circulating cement back to surface. The Salt will be isolated with an 8-5/8" continued intermediate casing string set into the Yates @ approximately 2200' and cement circulated to surface. The Bone Spring will be isolated with 5-1/2" casing to total depth (9200'±) and cemented with cement back into the 8-5/8" intermediate casing.

4. Casing Program

Hole Size	Interval	Casing OD	Weight	Grade	Type	WITNESS
17-1/2"	0' - 700'	13-3/8"	48#	H-40	ST&C	
11"	0' - 2200'	8-5/8"	24#	K-55	ST&C	
7-7/8"	0' - 9200'	5-1/2"	15.5# & 17#	K-55 & N-80	Butt & LT&C	

LOCATION VERIFICATION MAP



SCALE: 1" = 2000'

CONTOUR INTERVAL:
LOCO HILLS - 10'
MALJAMAR - 10'

SEC. 9 TWP. 18-S RGE. 31-E

SURVEY N.M.P.M.

COUNTY EDDY

DESCRIPTION 660' FSL & 1980' FEL

ELEVATION 3697

ANADARKO
OPERATOR PETROLEUM CORPORATION

LEASE BAISH FEDERAL

U.S.G.S. TOPOGRAPHIC MAP

LOCO HILLS, MALJAMAR, N.M.

JOHN WEST SURVEYING
HOBBS, NEW MEXICO
(505 393-3117)

EXHIBIT 2
Attachment 2

Baish Federal No. 9
Eddy County, New Mexico
Anadarko Petroleum Corporation

Location Verification Map