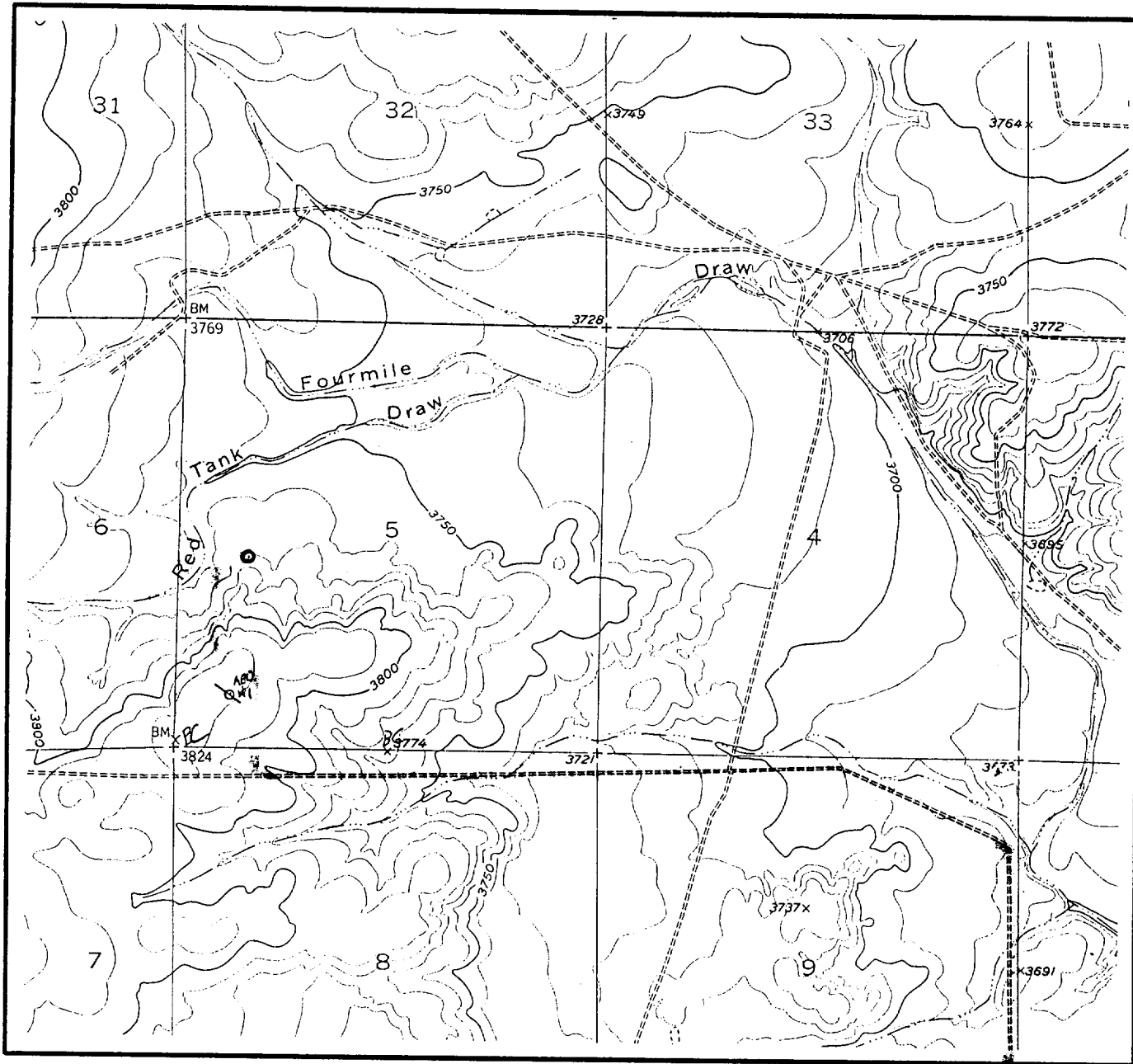


LOCATION & ELEVATION VERIFICATION MAP



SCALE : 1" = 2000'

CONTOUR INTERVAL 10 FEET

SECTION 5 TWP 19-S RGE 24-E
SURVEY NEW MEXICO PRINCIPAL MERIDIAN
COUNTY EDDY STATE NM
DESCRIPTION 2330' FSL & 860' FWL
ELEVATION 3768'
OPERATOR DAVID H. ARRINGTON OIL & GAS
LEASE #1 GREEN WOOLEY-BOOGER FEDERAL "5"

U.S.G.S. TOPOGRAPHIC MAP
PARISH RANCH, NEW MEXICO

SCALED LAT. N = 32°41'22"
LONG. W = 104°36'57"



This location has been very carefully staked on the ground according to the best official survey records, maps, and other data available to us.
Review this plot and notify us immediately of any possible discrepancy.

TOPOGRAPHIC LAND SURVEYORS

Surveying & Mapping for the Oil & Gas Industry

1307 N. HOBART
PAMPA, TX. 79065
(800) 658-6382

6709 N. CLASSEN BLVD.
OKLAHOMA CITY, OK. 73116
(800) 654-3219

2903 N. BIG SPRING
MIDLAND, TX. 79705
(800) 767-1653

