

FIGURE K6-1. The schematic sketch of an accumulator system shows required and optional components.

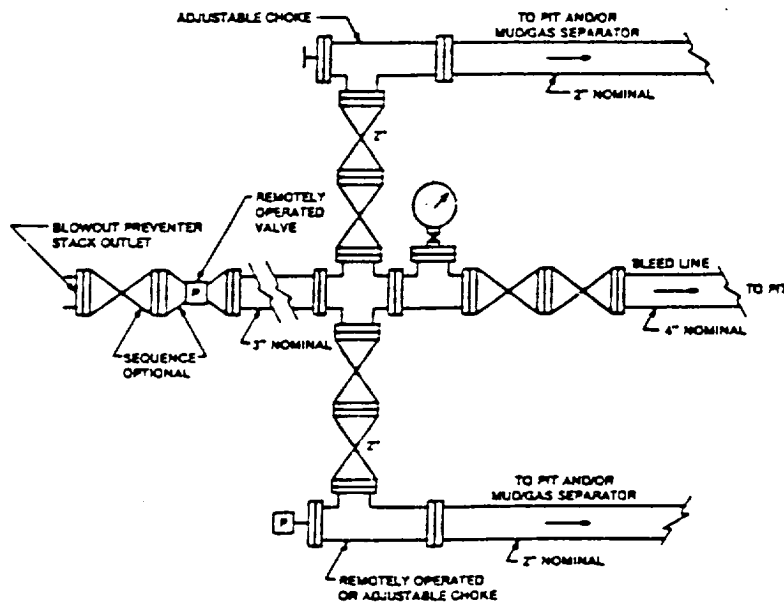


FIGURE K4-2. Typical choke manifold assembly for 5M rated working pressure service — surface installation.

EXHIBIT "E-1"
CHOKE MANIFOLD & CLOSING UNIT

KUKUI OPERATING COMPANY
HIGHLANDS "25" FEDERAL # 1
UNIT "G" SECTION 25
T19S-R21E EDDY CO. NM