

FIGURE K4-1. Typical choke manifold assembly for 2M and 3M rated working pressure service — surface installation.

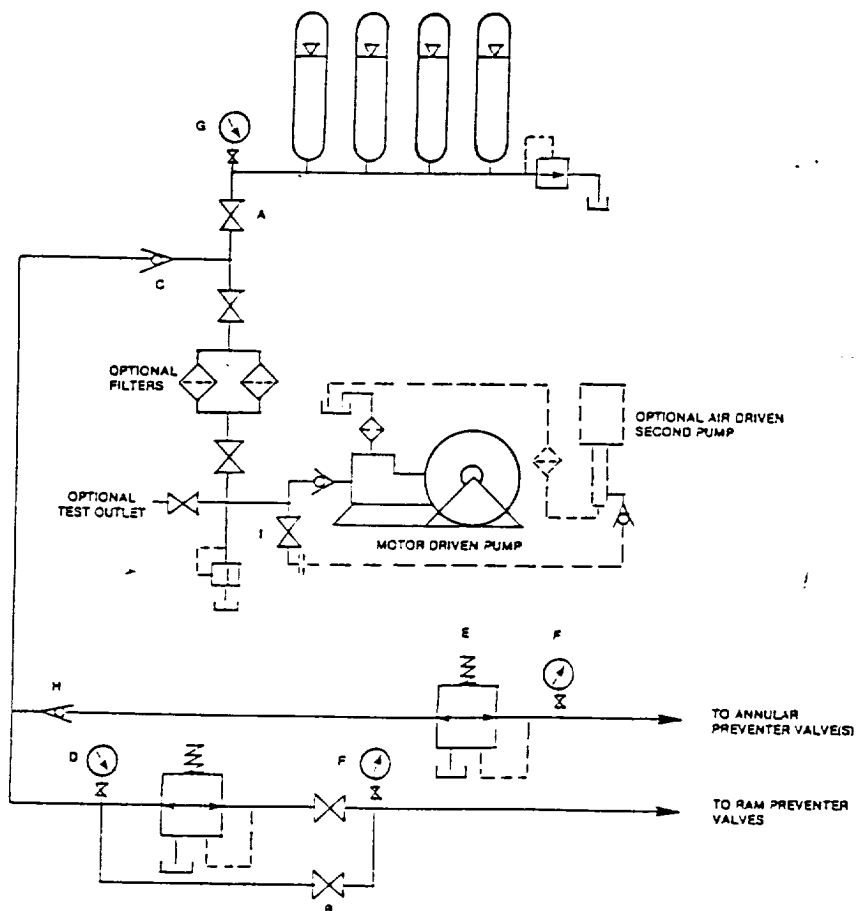


FIGURE K6-1. The schematic sketch of an accumulator system shows required and optional components.

EXHIBIT "E-1"
CHOKE MANIFOLD & CLOSING UNIT

CONCHO RESOURCES, INC.
WEST SHUGART "30" FEDERAL # 6
"NIT "O" SECTION 30
18S-R31E EDDY CO. NM