

District I  
1625 N. French Dr., Hobbs, NM 88240  
District II  
811 S. 1st Street, Artesia, NM 88210  
District III  
1000 Rio Brazos Rd., Aztec, NM 87410  
District IV  
2040 South Pacheco, Santa Fe, NM 87505

State of New Mexico  
Energy, Minerals & Natural Resources

Oil Conservation Division  
2040 South Pacheco  
Santa Fe, NM 87505

Form C-101  
Revised March 17, 1999

Submit to appropriate District Office  
State Lease - 6 Copies  
Fee Lease - 5 Copies

☐ AMENDED REPORT

APPLICATION FOR PERMIT TO DRILL, RE-ENTER, DEEPEN, PLUGBACK, OR ADD A ZONE

<sup>1</sup> Operator Name and Address <b>ARCO PERMIAN</b> <b>200 WESTLAKE PARK BLVD, RM 266; HOUSTON, TX 77079</b>		<sup>2</sup> OGRID Number <b>000990</b>
<sup>4</sup> Property Code <b>24379</b>	<sup>5</sup> Property Name <b>LITTLE BOX STATE</b>	<sup>3</sup> API Number <b>30-015-32118</b>
		<sup>6</sup> Well No. <b>6</b>

<sup>7</sup> Surface Location									
UL or lot no.	Section	Township	Range	Lot. Idn	Feet from the	North/South Line	Feet from the	East/West line	County
<b>0</b>	<b>36</b>	<b>20S</b>	<b>21E</b>		<b>1000</b>	<b>SOUTH</b>	<b>1500</b>	<b>EAST</b>	<b>EDDY</b>

<sup>8</sup> Proposed Bottom Hole Location If Different From Surface									
UL or lot no.	Section	Township	Range	Lot. Idn	Feet from the	North/South Line	Feet from the	East/West line	County
<sup>9</sup> Proposed Pool 1 <b>LITTLE BOX CANYON (MORROW)</b>					<sup>10</sup> Proposed Pool 2				

<sup>11</sup> Work Type Code <b>N</b>	<sup>12</sup> Well Type Code <b>G</b>	<sup>13</sup> Cable/Rotary <b>R</b>	<sup>14</sup> Lease Type Code <b>S</b>	<sup>15</sup> Ground Level Elevation <b>4431'</b>
<sup>16</sup> Multiple <b>NO</b>	<sup>17</sup> Proposed Depth <b>8600'</b>	<sup>18</sup> Formation <b>MORROW</b>	<sup>19</sup> Contractor <b>NABORS</b>	<sup>20</sup> Spud Date <b>2/1/02</b>

<sup>21</sup> Proposed Casing and Cement Program					
Hole Size	Casing Size	Casing weight/foot	Setting Depth	Sacks of Cement	Estimated TOC
<b>12-1/4</b>	<b>8-5/8</b>	<b>32</b>	<b>1400</b>	<b>960</b>	<b>CIRC.</b>
<b>7-7/8</b>	<b>5-1/2</b>	<b>17</b>	<b>8600'</b>	<b>539</b>	<b>CIRC.</b>

<sup>22</sup> Describe the proposed program. If this application is to DEEPEN or PLUG BACK, give the data on the present productive zone and proposed new productive zone. Describe the blowout prevention program, if any. Use additional sheets if necessary.

**Subject well planned as a 8600' straight hole.**

NOTIFY SPUD & TIME TO WITNESS  
CEMENTING of 8-5/8" CASING

<sup>23</sup> I hereby certify that the information given above is true and complete to the best of my knowledge and belief.

Signature: *Amy T. Spang*

Printed name: **AMY T. SPANG**

Title: **REGULATORY COMPLIANCE ANALYST**

Date: **11/30/01**

Phone: **281/366-7655**

OIL CONSERVATION DIVISION

Approved by:

**ORIGINAL SIGNED BY TIM W. GUM**  
**DISTRICT II SUPERVISOR**

Title:

Approval Date: **DEC 03 2001**

Expiration Date: **DEC 03 2002**

Conditions of Approval:

Attached ☐

DISTRICT I  
P.O. Box 1990, Hobbs, NM 88241-1990

DISTRICT II  
P.O. Drawer DD, Artesia, NM 88211-0719

DISTRICT III  
1000 Rio Brazos Rd., Artec, NM 87410

DISTRICT IV  
P.O. BOX 2088, SANTA FE, N.M. 87504-2088

State of New Mexico  
Energy, Minerals and Natural Resources Department

OIL CONSERVATION DIVISION

P.O. Box 2088  
Santa Fe, New Mexico 87504-2088

Form C-102  
Revised February 10, 1994  
Submit to Appropriate District Office  
State Lease - 4 Copies  
Fee Lease - 3 Copies

WELL LOCATION AND ACREAGE DEDICATION PLAT

☐ AMENDED REPORT

API Number	Pool Code 80240	Pool Name Little Box Canyon (Morrow)
Property Code	Property Name LITTLE BOX STATE	Well Number 6
OGRID No. 000990	Operator Name ARCO PERMIAN	Elevation 4431'

Surface Location

UL or lot No. 0	Section 36	Township 20-S	Range 21-E	Lot Idn	Feet from the 1000	North/South line SOUTH	Feet from the 1500	East/West line EAST	County EDDY
--------------------	---------------	------------------	---------------	---------	-----------------------	---------------------------	-----------------------	------------------------	----------------

Bottom Hole Location If Different From Surface

UL or lot No.	Section	Township	Range	Lot Idn	Feet from the	North/South line	Feet from the	East/West line	County
Dedicated Acres 320	Joint or Infill	Consolidation Code	Order No.						

NO ALLOWABLE WILL BE ASSIGNED TO THIS COMPLETION UNTIL ALL INTERESTS HAVE BEEN CONSOLIDATED  
OR A NON-STANDARD UNIT HAS BEEN APPROVED BY THE DIVISION

<p>NAD 1983 GEOGRAPHIC LOCATION LAT. 32°31'23.81"N LONG 104°44'39.02"W</p>	<p>1980'</p>	<p>#5</p>	LOT 1
			42.22 AC LOT 2
			41.97 AC LOT 3
			41.29 AC LOT 4
			1500'
			1000'
			40.43 AC

**OPERATOR CERTIFICATION**

I hereby certify the the information contained herein is true and complete to the best of my knowledge and belief.

Amy T. Spang  
Signature

Amy T. Spang  
Printed Name

Regulatory Compliance Analyst  
Title

11/29/01  
Date

**SURVEYOR CERTIFICATION**

I hereby certify that the well location shown on this plat was plotted from field notes of actual surveys made by me or under my supervision, and that the same is true and correct to the best of my belief.

AUGUST 21, 2001  
Date Surveyed

G. EIDSON  
Signature & Seal of Professional Surveyor

AWB  
Professional Surveyor

01.11.0961  
Professional Surveyor

RONALD EIDSON  
Certified Professional Surveyor

3239  
Professional Surveyor

12641  
Professional Surveyor

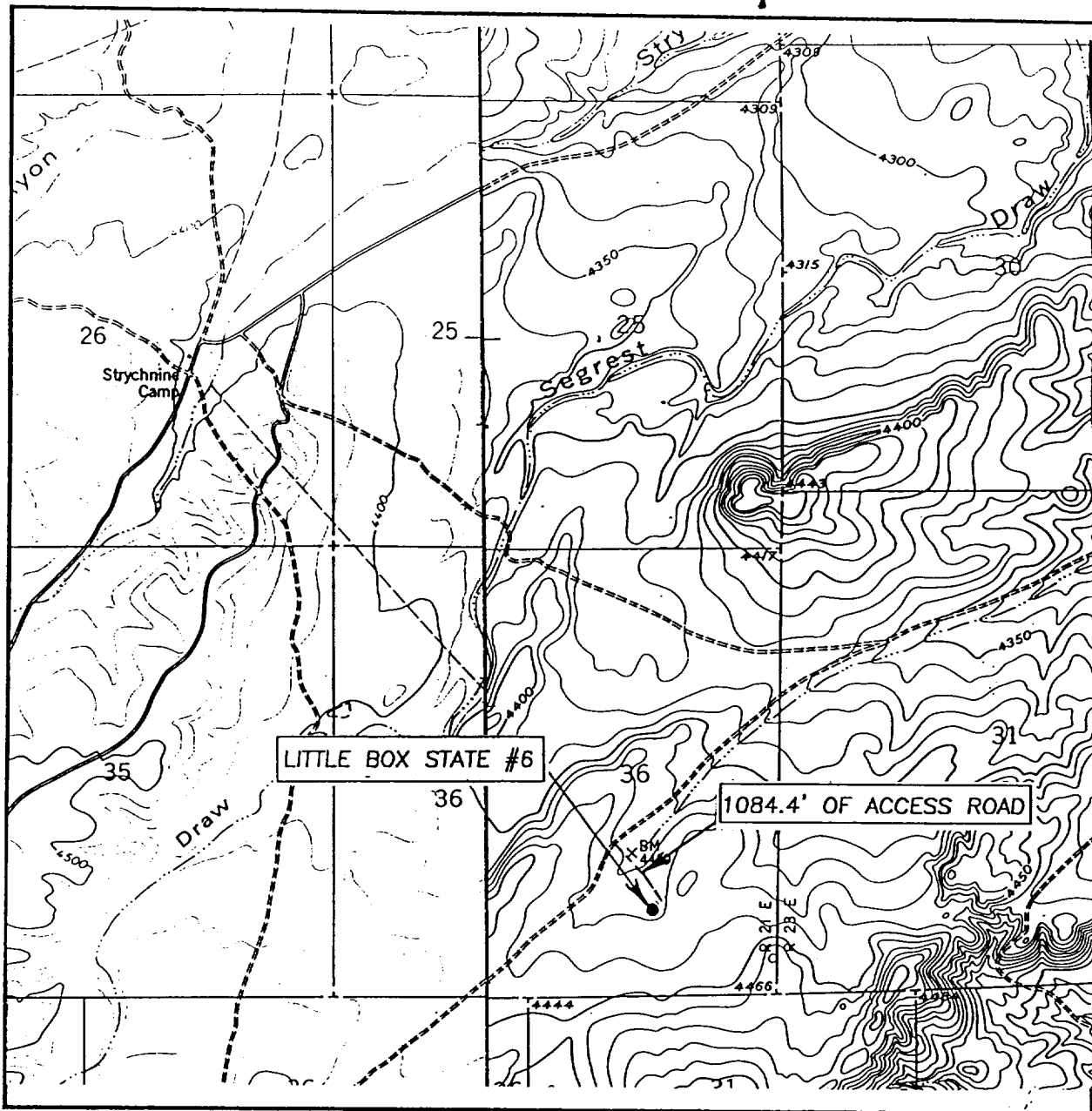


SCALE: 1" = 2 MILES

LEASE \_\_\_\_\_ LITTLE BOX STATE

(505) 393-3117

# LOCATION VERIFICATION MAP



SCALE: 1" = 2000'

CONTOUR INTERVAL: 10'

SEC. 36 TWP. 20-S RGE. 21-E

BOX CANYON, N.M.

SURVEY N.M.P.M.

COUNTY EDDY

DESCRIPTION 1000' FSL & 1500' FEL

ELEVATION 4431'

OPERATOR ARCQ PERMIAN

LEASE LITTLE BOX STATE

U.S.G.S. TOPOGRAPHIC MAP  
BOX CANYON, N.M.

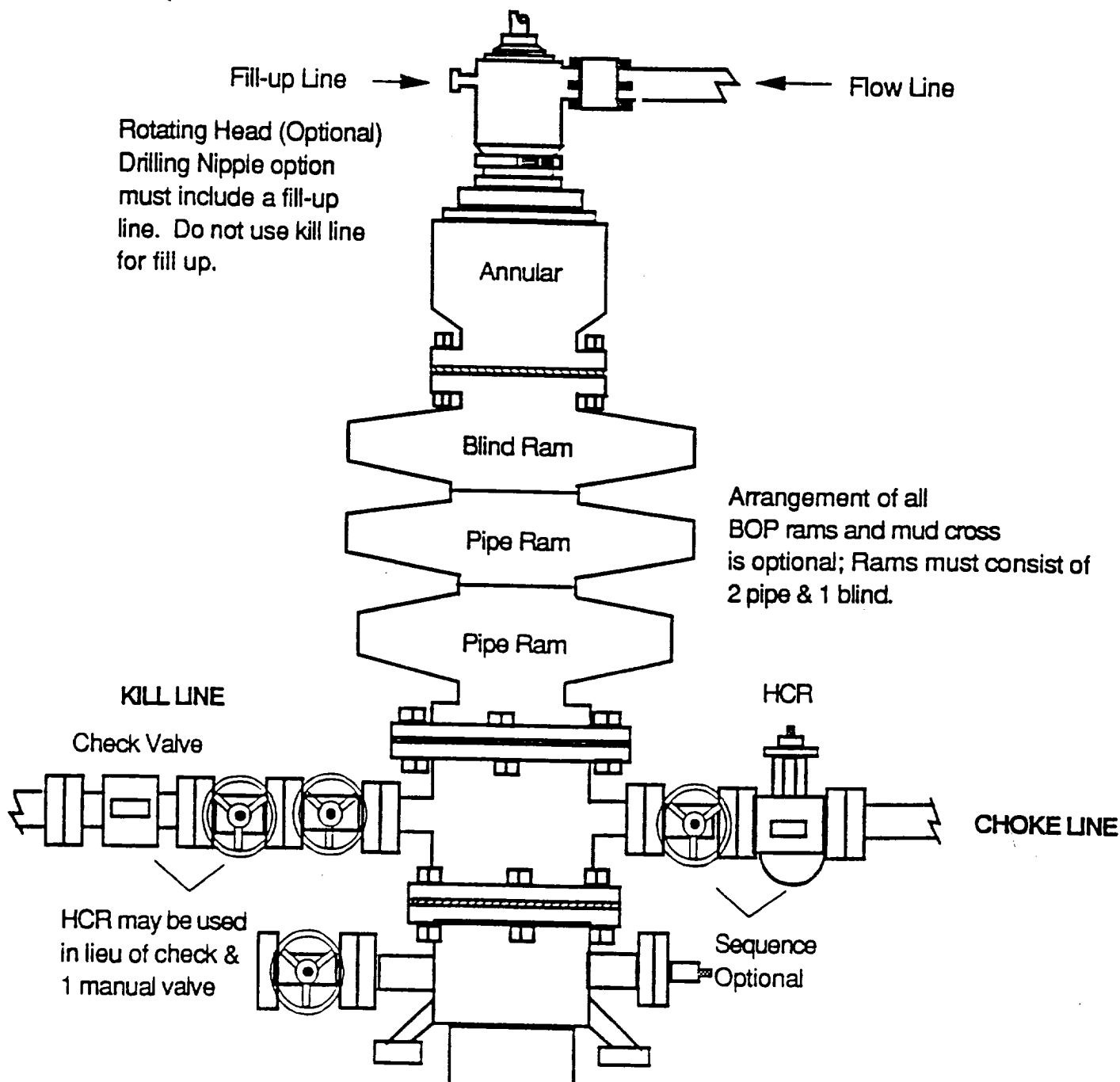
JOHN WEST SURVEYING  
HOBBS, NEW MEXICO  
(505) 393-3117

# EXHIBIT 1

## DRILLING OPERATIONS

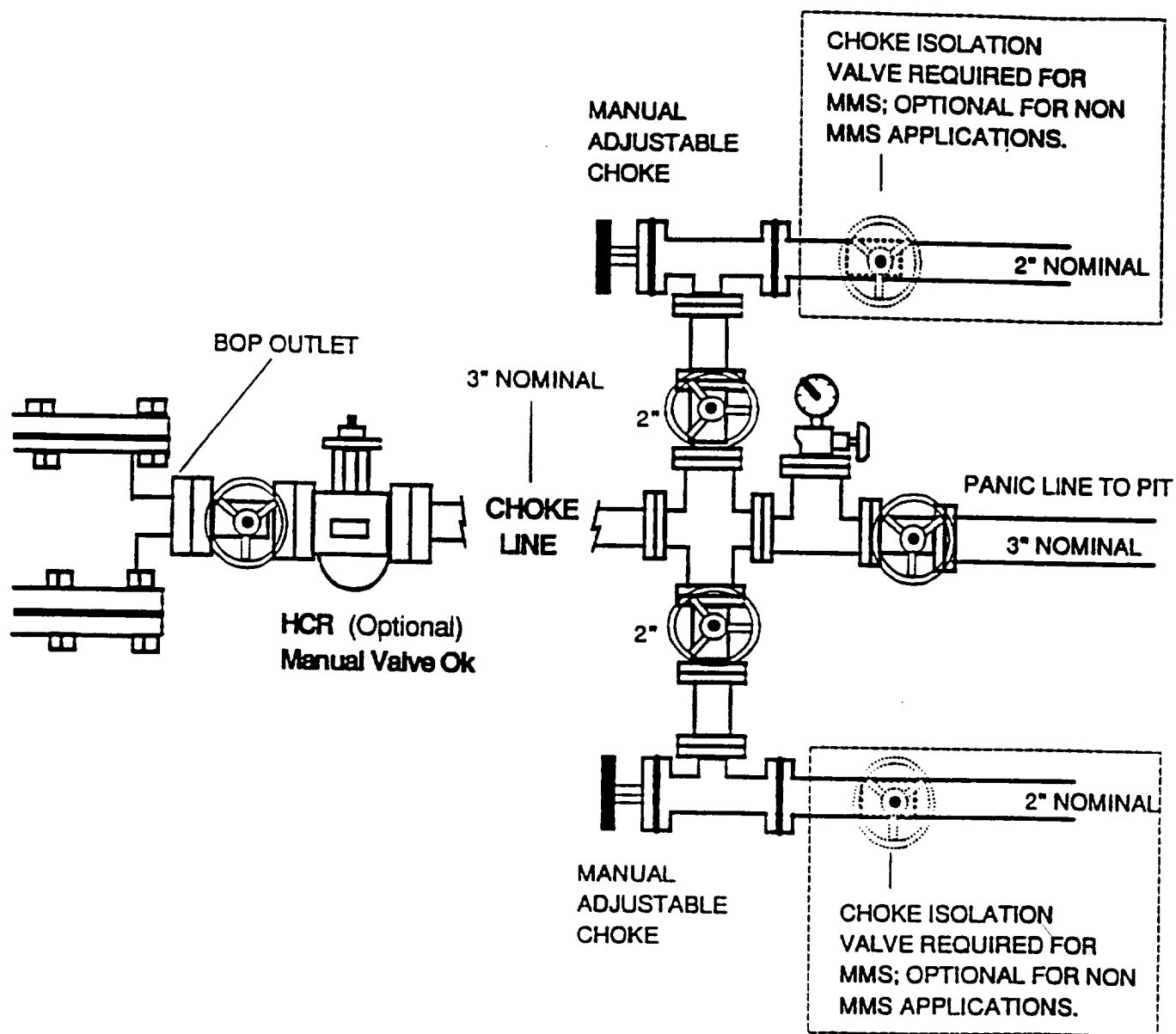
CLASS -1: NORMAL PRESSURE < 10PPG

OPTION - 2: MMS STANDARD; SINGLE SIZE DRILL STRING



# EXHIBIT 2

## DRILLING OPERATIONS CHOKE MANIFOLD 2M AND 3M SERVICE



## **BLOWOUT PREVENTION EQUIPMENT SPECIFICATIONS**

1. All BOP equipment shall be fluid and/or mechanically operated.
2. BOP's and all fittings will be in good working condition.
3. Equipment through which the bit must pass shall be at least as large as the casing size being drilled.
4. The nipple above the BOP shall be at least the same size as the last casing set.
5. The upper kelly cock with handle and lower kelly cock shall be rated at the BOP working pressure.
6. A floor safety valve (full opening) or drill string BOP with appropriate pressure ratings shall be available on the rig floor with connections or subs to fit any tool joint in the string.
7. The minimum size choke line shall be 3 inches nominal diameter, with a minimum size for vent lines downstream of chokes of 2 inches nominal, and vent lines which by-pass shall be a minimum of 3 inches nominal and as straight as possible.
8. All valves, fittings and lines between the closing unit and the blowout preventer stack should be of steel construction with rated working pressure at least equal to working pressure rating of the stack. Lines shall be bundled and protected from damage.
9. Minimum size for kill line is 2 inches nominal.
10. Ram type preventers shall be equipped with extension hand wheels or hydraulic locks.