

District I
1625 N. French Dr., Hobbs, NM 88240
District II
811 South First, Artesia, NM 88210
District III
1000 Rio Brazos Road, Aztec, NM 87410
District IV
2040 South Pacheco, Santa Fe, NM 87505

State of New Mexico
Energy Minerals and Natural Resources

Oil Conservation Division
2040 South Pacheco
Santa Fe, NM 87505

Form C-101
Revised March 17, 1999

Submit to appropriate District Office
State Lease - 6 Copies
Fee Lease - 5 Copies

☐ AMENDED REPORT

APPLICATION FOR PERMIT TO DRILL, RE-ENTER, DEEPEN, PLUGBACK, OR ADD A ZONE

¹ Operator Name and Address Ocean Energy, Inc. 1001 Fannin, Suite 1600, Houston, TX 77002		² OGRID Number 169355
		³ API Number 30 - 015 - 32124
³ Property Code 29127	⁵ Property Name Parkway	⁶ Well No. 13

⁷ Surface Location

UL or lot no.	Section	Township	Range	Lot Idn	Feet from the	North/South line	Feet from the	East/West line	County
I	20	19S	29E		1980	South	860	East	Eddy

⁸ Proposed Bottom Hole Location If Different From Surface

UL or lot no.	Section	Township	Range	Lot Idn	Feet from the	North/South line	Feet from the	East/West line	County
⁹ Proposed Pool 1 Parkway West-Morrow (82600)						¹⁰ Proposed Pool 2			

¹¹ Work Type Code N	¹² Well Type Code G	¹³ Cable/Rotary R	¹⁴ Lease Type Code P	¹⁵ Ground Level Elevation 3320'
¹⁶ Multiple N	¹⁷ Proposed Depth 11500'	¹⁸ Formation Morrow	¹⁹ Contractor Grey Wolf	²⁰ Spud Date When Approved

²¹ Proposed Casing and Cement Program

Hole Size	Casing Size	Casing weight/foot	Setting Depth	Sacks of Cement	Estimated TOC
17-1/2"	13-3/8"	48#	350'	575	Surf.
11"	8-5/8"	32#	3200'	1900	Surf.
7-7/8"	5-1/2"	17#	11500'	1000	8500'

22 Describe the proposed program. If this application is to DEEPEN or PLUG BACK, give the data on the present productive zone and proposed new productive zone. Describe the blowout prevention program, if any. Use additional sheets if necessary.

Ocean Energy, Inc. proposes to drill this well to 11500'. Log and run production casing as indicated above if log looks productive.

BOP Program: 11" 5000 psi type "U" ram. 11" 5000 psi annular preventor, 4" 5000 psi manifold. BOP's will be tested every two weeks. (See attached sketch of BOP's.

²³ I hereby certify that the information given above is true and complete to the best of my knowledge and belief. Signature: <i>Jeanie McMillan</i> Printed name: Jeanie McMillan Title: Regulatory Specialist Date: 12/11/01 Phone: (713) 265-6834; Fax (713) 265-8086		OIL CONSERVATION DIVISION Approved by: ORIGINAL SIGNED BY TIM W. GUM DISTRICT II SUPERVISOR Title: Approval Date: DEC 13 2001 Expiration Date: DEC 13 2002 Conditions of Approval: Attached <input type="checkbox"/>	
--	--	---	--

DISTRICT I
1825 N. French Dr., Hobbs, NM 88240
DISTRICT II
811 South First, Artesia, NM 88210
DISTRICT III
1000 Rio Brazos Rd., Artec, NM 87410
DISTRICT IV
2040 South Pacheco, Santa Fe, NM 87505

State of New Mexico
Energy, Minerals and Natural Resources Department

Form C-102
Revised March 17, 1999

Submit to Appropriate District Office
State Lease - 4 Copies
Fee Lease - 3 Copies

OIL CONSERVATION DIVISION

2040 South Pacheco
Santa Fe, New Mexico 87504-2088

☐ AMENDED REPORT

WELL LOCATION AND ACREAGE DEDICATION PLAT

API Number	Pool Code 82600	Pool Name PARKWAY WEST - MORROW
Property Code	Property Name PARKWAY	Well Number 13
OGRID No. 169355	Operator Name OCEAN ENERGY, Inc.	Elevation 3320'

Surface Location

UL or lot No. 1	Section 20	Township 19 S	Range 29 E	Lot Idn	Feet from the 1980	North/South line SOUTH	Feet from the 860	East/West line EAST	County EDDY
--------------------	---------------	------------------	---------------	---------	-----------------------	---------------------------	----------------------	------------------------	----------------

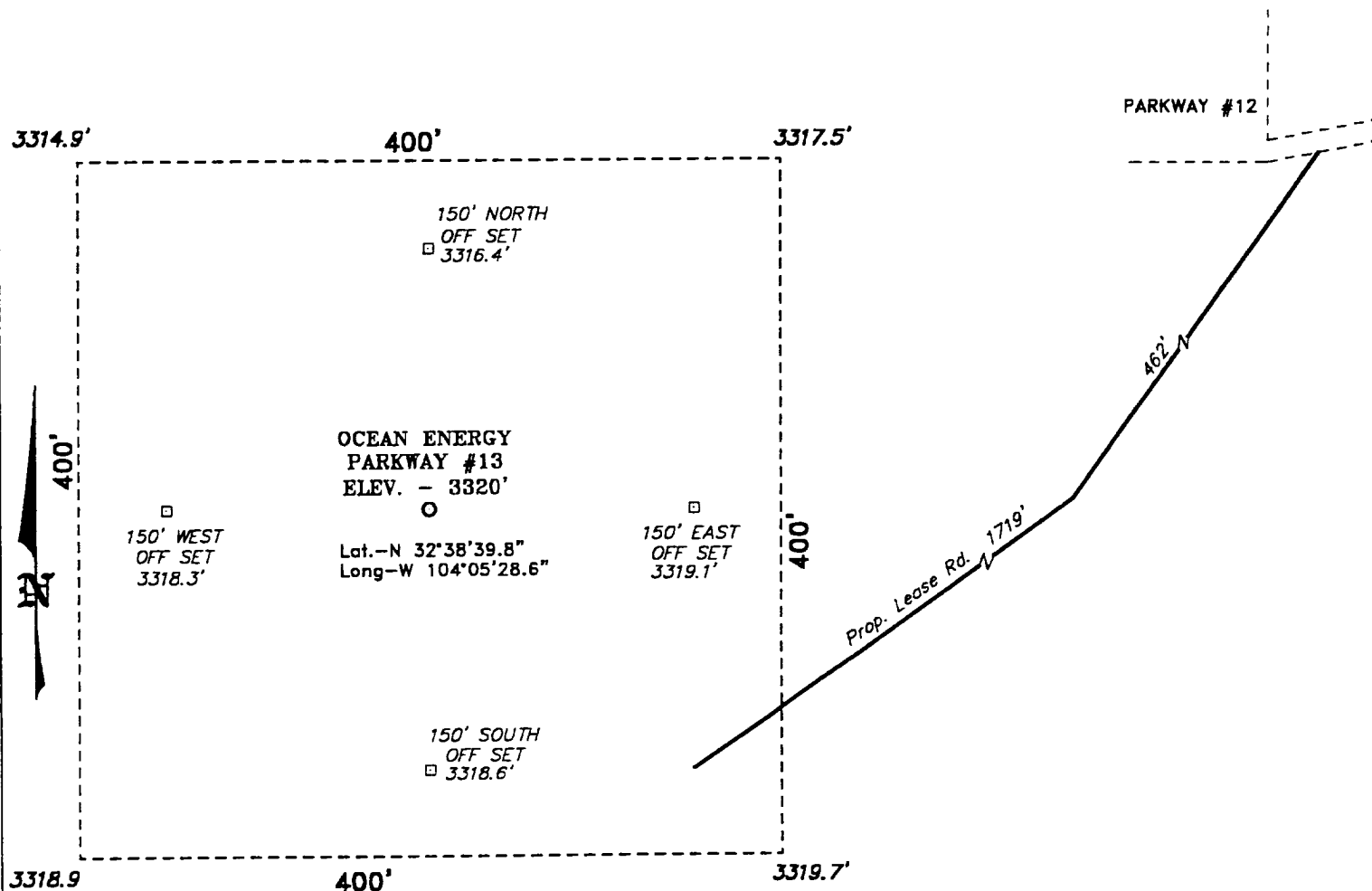
Bottom Hole Location If Different From Surface

UL or lot No.	Section	Township	Range	Lot Idn	Feet from the	North/South line	Feet from the	East/West line	County			
					Dedicated Acres					Joint or Infill	Consolidation Code	Order No.

NO ALLOWABLE WILL BE ASSIGNED TO THIS COMPLETION UNTIL ALL INTERESTS HAVE BEEN CONSOLIDATED
OR A NON-STANDARD UNIT HAS BEEN APPROVED BY THE DIVISION

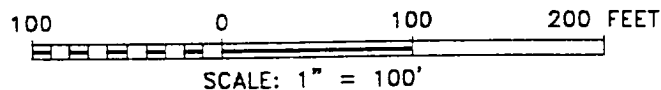
	OPERATOR CERTIFICATION	
	I hereby certify the the information contained herein is true and complete to the best of my knowledge and belief.	
	Signature JEANIE MCMILLAN	
	Printed Name SR. REGULATORY SPEC.	
	Title 12-11-01	
	Date	
	SURVEYOR CERTIFICATION	
	I hereby certify that the well location shown on this plat was plotted from field notes of actual surveys made by me or under my supervision, and that the same is true and correct to the best of my belief.	
	September 8, 2001	
	Date Surveyed	
	Signature & Seal of Professional Surveyor	
	Certificate No. Cory Jones 7977	

SECTION 20, TOWNSHIP 19 SOUTH, RANGE 29 EAST, N.M.P.M.,
EDDY COUNTY, NEW MEXICO.



Directions to Location:

FROM THE JUNCTION OF CO. RD. 235 AND STATE HWY 360, GO NORTHWESTERLY ON 235 FOR 8.5 MILES TO LEASE ROAD; THENCE SOUTH ON LEASE ROAD FOR 500 FEET; THENCE WEST TO THE PARKWAY #12 AND A PROPOSED LEASE ROAD TO THE #13.



BASIN SURVEYS P.O. BOX 1786 - HOBBS, NEW MEXICO

W.O. Number: 1897

Drawn By: K. GOAD

Date: 09-10-2001

Disk: KJG CD#4 - 1897A.DWG

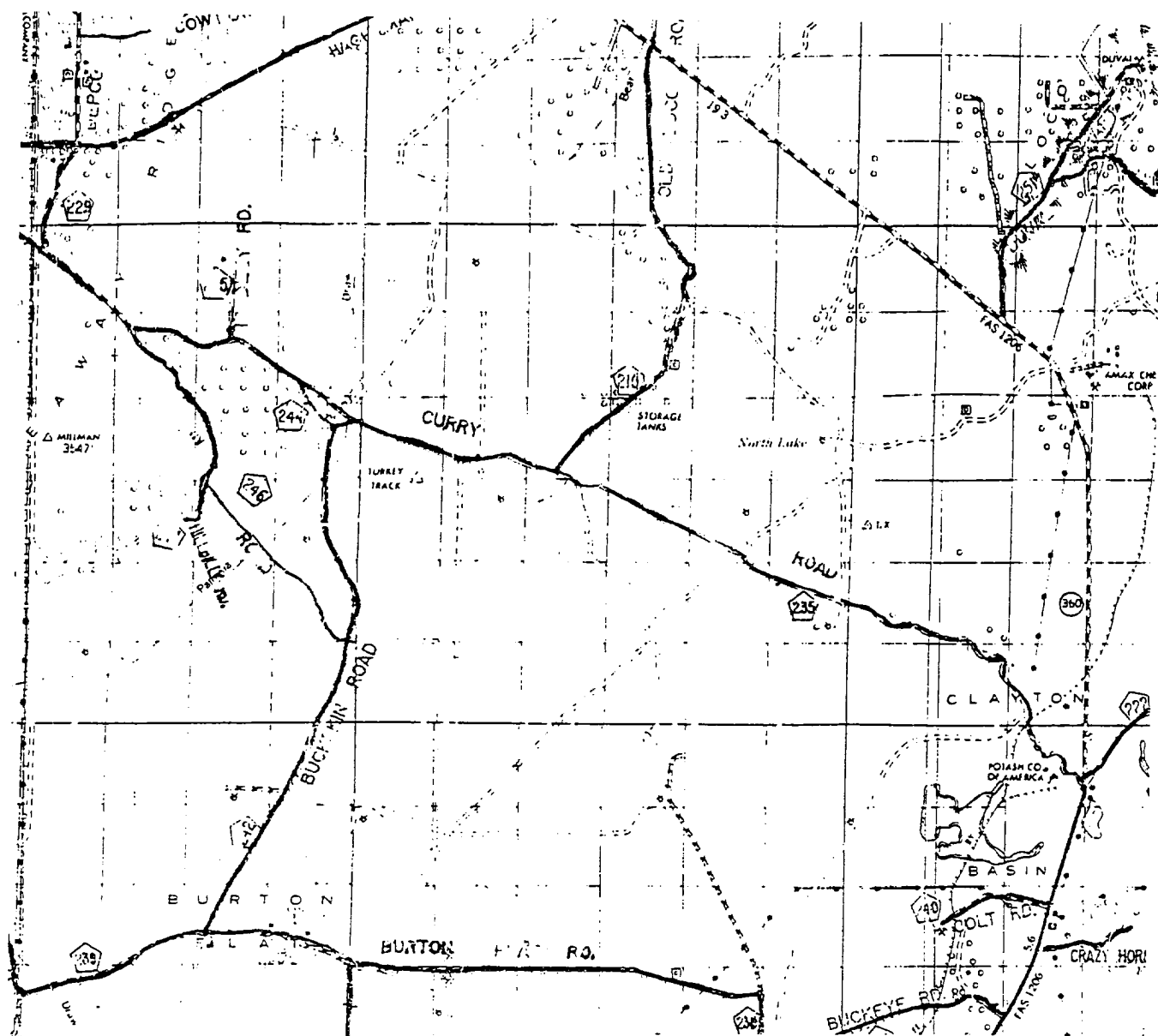
OCEAN ENERGY

REF: PARKWAY #13 / Well Pad Topo

THE PARKWAY #13 LOCATED 1980' FROM
THE SOUTH LINE AND 860' FROM THE EAST LINE OF
SECTION 20, TOWNSHIP 19 SOUTH, RANGE 29 EAST,
N.M.P.M., EDDY COUNTY, NEW MEXICO.

Survey Date: 09-08-2001

Sheet 1 of 1 Sheets



PARKWAY #13
 Located at 1980' FSL and 860' FEL
 Section 20, Township 19 South, Range 29 East,
 N.M.P.M., Eddy County, New Mexico.

basin
surveys

focused on excellence
 in the oilfield

P.O. Box 1786
 1120 N. West County Rd.
 Hobbs, New Mexico 88241
 (505) 393-7316 - Office
 (505) 392-3074 - Fax
 basin-surveys.com

W.O. Number: 1897AA - KJG CD#4

Survey Date: 09-08-2001

Scale: 1" = 2 MILES

Date: 09-10-2001

OCEAN ENERGY

BOP

