

FIGURE K4-1. Typical choke manifold assembly for 2M and 3M rated working pressure service — surface installation.

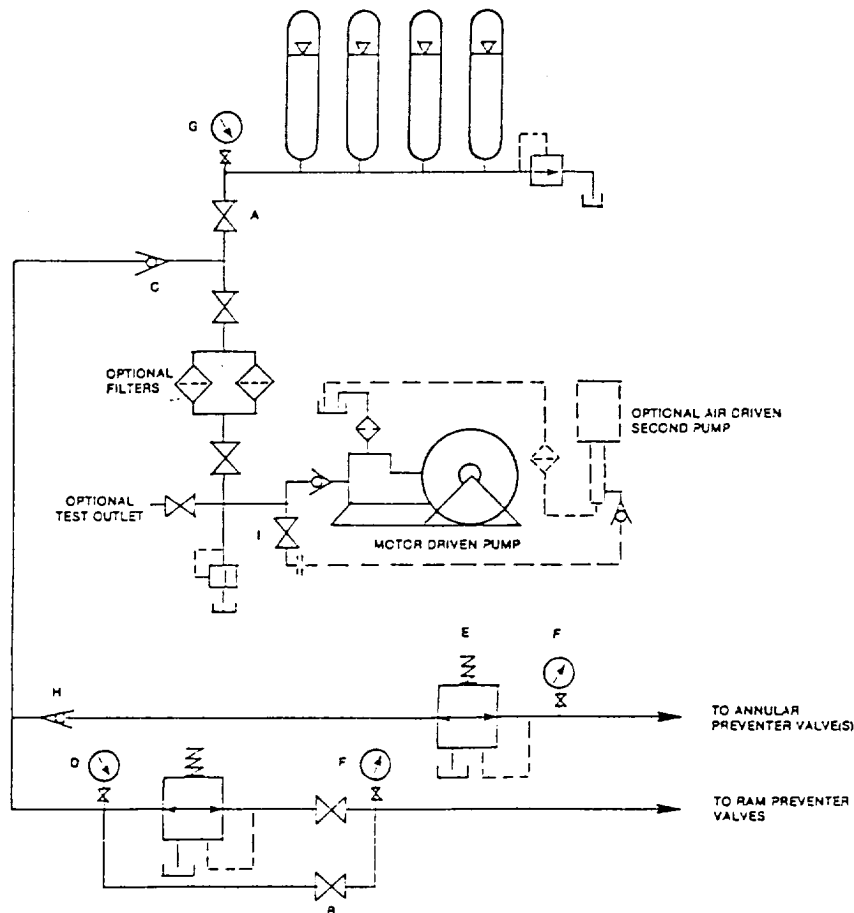


FIGURE K6-1. The schematic sketch of an accumulator system shows required and optional components.

EXHIBIT "E-1"
CHOKE MANIFOLD & CLOSING UNIT

KUKUI OPERATING COMPANY
HIGHLANDS "14" FEDERAL # 1
UNIT "F" SECTION 14
T19S-R21E EDDY CO. NM