

District I  
1625 N. French Dr., Hobbs, NM 88240  
District II  
811 South First, Artesia, NM 88210  
District III  
1000 Rio Brazos Road, Aztec, NM 87610  
District IV  
2040 South Pacheco, Santa Fe, NM 87505

State of New Mexico  
Energy Minerals and Natural Resources

Oil Conservation Division  
2040 South Pacheco  
Santa Fe, NM 87505  
RECEIVED  
OCD - ARTESIA

Form C-101  
Revised March 17, 1999  
Submit to appropriate District Office  
State Lease - 6 Copies  
Fee Lease - 5 Copies

☒ AMENDED REPORT

APPLICATION FOR PERMIT TO DRILL, RE-ENTER, DEEPEN, PLUGBACK, OR ADD A ZONE

Operator Name and Address Xeric Oil & Gas Corporation PO Box 352 Midland, Texas 79702		OGRID Number 025482
Property Code 29674		API Number 30-015-32262
Patron State	Property Name	Well No. #1

Surface Location

UL or lot no.	Section	Township	Range	Lot Idn	Feet from the	North/South line	Feet from the	East/West line	County
I	8	19-S	24-E		1980'	South	660'	East	Eddy

Proposed Bottom Hole Location If

UL or lot no.	Section	Township	Range	Lot Idn	Feet from the	County
Proposed Pool I Wildcat-Morrow/Wildcat-Antelope Sink						NOTIFY OCD SPUD & TIME TO WITNESS CEMENTING OF ALL CASING STRINGS 8 5/8"

Work Type Code N	Well Type Code X G	Cable/Rotary R	Lease Type Code S	Ground Level Elevation 3737'
Multiple No	Proposed Depth 9000'	Formation Wildcat	Contractor Key Energy	Spud Date ASAP

Proposed Casing and Cement Program

Hole Size	Casing Size	Casing weight/foot	Setting Depth	Sacks of Cement	Estimated TOC
12 1/4"	8 5/8"	24#	1400'	750SX	Surface
7 7/8"	5 1/2"	17#	9000'	575SX	5000'

Describe the proposed program. If this application is to DEEPEN or PLUG BACK, give the data on the present productive zone and proposed new productive zone.

Describe the blowout prevention program, if any. Use additional sheets if necessary.

1. Drill 12 1/4" hole with air to approximately 1400'
2. Set 8 5/8" casing & cement w/575 sx "C" + 4% gel + 2% Cacl + 175 sx "C" + 2% Cacl; circulate to surface
3. Drill 7 7/8" hole with fresh water to 9,000'. Run open hole logs.
4. Set 5 1/2" casing. Cement with 757 sx "C" + 6% gel + 5% salt + .25% celloflake
5. Commence well completion operations.

I hereby certify that the information given above is true and complete to the best of my knowledge and belief.

Signature: Glenda Hunt

Printed name: Glenda Hunt

Title: Senior Production Analyst

Date: 4/9/02

Phone:  
(915) 683-3171

OIL CONSERVATION DIVISION

Approved by: ORIGINAL SIGNED BY TIM W. GUM  
DISTRICT II SUPERVISOR

Title:

Approval Date: APR 16 2002 Expiration Date: APR 16 2003

Conditions of Approval:

Attached ☐

DISTRICT I  
P.O. Box 1980, Hobbs, NM 88241-1980

State of New Mexico  
Energy, Minerals and Natural Resources Department

Form C-102  
Revised February 10, 1994  
Submit to Appropriate District Office  
State Lease - 4 Copies  
Fee Lease - 3 Copies

DISTRICT II  
P.O. Drawer DD, Artesia, NM 88211-0719

OIL CONSERVATION DIVISION

P.O. Box 2088  
Santa Fe, New Mexico 87504-2088

DISTRICT III  
1000 Rio Brazos Rd., Aztec, NM 87410

DISTRICT IV  
P.O. BOX 2088, SANTA FE, N.M. 87504-2088

WELL LOCATION AND ACREAGE DEDICATION PLAT

XXAMENDED REPORT

API Number	Pool Code	Pool Name
		Wildcat - Cisco
Property Code	Property Name	Well Number
	PATRON STATE	1
OGRID No.	Operator Name	Elevation
025482	XERIC OIL & GAS CORPORATION	3732'

Surface Location

UL or lot No.	Section	Township	Range	Lot Idn	Feet from the	North/South line	Feet from the	East/West line	County
1	8	19-S	24-E		1980	SOUTH	660	EAST	EDDY

Bottom Hole Location If Different From Surface

UL or lot No.	Section	Township	Range	Lot Idn	Feet from the	North/South line	Feet from the	East/West line	County

Dedicated Acres	Joint or Infill	Consolidation Code	Order No.
40			

NO ALLOWABLE WILL BE ASSIGNED TO THIS COMPLETION UNTIL ALL INTERESTS HAVE BEEN CONSOLIDATED  
OR A NON-STANDARD UNIT HAS BEEN APPROVED BY THE DIVISION

	<p>OPERATOR CERTIFICATION</p> <p>I hereby certify the the information contained herein is true and complete to the best of my knowledge and belief.</p> <p></p> <p>Signature</p> <p>Glenda Hunt</p> <p>Printed Name</p> <p>Sr. Production Analyst</p> <p>Title</p> <p>4/9/02</p> <p>Date</p>
	<p>SURVEYOR CERTIFICATION</p> <p>I hereby certify that the well location shown on this plat was plotted from field notes of actual surveys made by me or under my supervision, and that the same is true and correct to the best of my belief.</p> <p>MARCH 28, 2002</p> <p>Date Surveyed</p> <p>Signature &amp; Seal of Professional Surveyor</p> <p></p> <p>02-11-0234</p> <p>Certificate No. RONALD J. EIDSON 3239 GARY EIDSON 12641</p>

DISTRICT I  
P.O. Box 1980, Hobbs, NM 88241-1980

State of New Mexico  
Energy, Minerals and Natural Resources Department

Form C-102  
Revised February 10, 1994  
Submit to Appropriate District Office  
State Lease - 4 Copies  
Fee Lease - 3 Copies

DISTRICT II  
P.O. Drawer DD, Artesia, NM 88211-0719

OIL CONSERVATION DIVISION

P.O. Box 2088  
Santa Fe, New Mexico 87504-2088

DISTRICT III  
1000 Rio Brazos Rd., Aztec, NM 87410

DISTRICT IV  
P.O. BOX 2088, SANTA FE, N.M. 87504-2088

WELL LOCATION AND ACREAGE DEDICATION PLAT

AMENDED REPORT

API Number	Pool Code	Pool Name
		Wildcat - Morrow
Property Code	Property Name	Well Number
	PATRON STATE	1
OGRID No.	Operator Name	Elevation
025482	XERIC OIL & GAS CORPORATION	3732'

Surface Location

UL or lot No.	Section	Township	Range	Lot Idn	Feet from the	North/South line	Feet from the	East/West line	County
1	8	19-S	24-E		1980	SOUTH	660	EAST	EDDY

Bottom Hole Location If Different From Surface

UL or lot No.	Section	Township	Range	Lot Idn	Feet from the	North/South line	Feet from the	East/West line	County

Dedicated Acres	Joint or Infill	Consolidation Code	Order No.
320			

NO ALLOWABLE WILL BE ASSIGNED TO THIS COMPLETION UNTIL ALL INTERESTS HAVE BEEN CONSOLIDATED  
OR A NON-STANDARD UNIT HAS BEEN APPROVED BY THE DIVISION

	<p>OPERATOR CERTIFICATION</p> <p>I hereby certify the the information contained herein is true and complete to the best of my knowledge and belief.</p> <p></p> <p>Signature</p> <p>Glenda Hunt</p> <p>Printed Name</p> <p>Senior Production Analyst</p> <p>Title</p> <p>4/9/02</p> <p>Date</p>
	<p>SURVEYOR CERTIFICATION</p> <p>I hereby certify that the well location shown on this plat was plotted from field notes of actual surveys made by me or under my supervision and that the same is true and correct to the best of my belief.</p> <p>MARCH 28, 2002</p> <p>Date Surveyed</p> <p>AWB</p> <p>Signature &amp; Seal of Professional Surveyor</p> <p></p> <p>02.11.0234</p> <p>Certificate No. RONALD J. EIDSON 3239 GARY EIDSON 12641</p>

DISTRICT I  
P.O. Box 1980, Hobbs, NM 88241-1980

State of New Mexico  
Energy, Minerals and Natural Resources Department

Form C-102  
Revised February 10, 1994  
Submit to Appropriate District Office  
State Lease - 4 Copies  
Fee Lease - 3 Copies

DISTRICT II  
P.O. Drawer DD, Artesia, NM 88211-0719

OIL CONSERVATION DIVISION

P.O. Box 2088  
Santa Fe, New Mexico 87504-2088

DISTRICT III  
1000 Rio Brazos Rd., Aztec, NM 87410

DISTRICT IV  
P.O. BOX 2088, SANTA FE, N.M. 87504-2088

WELL LOCATION AND ACREAGE DEDICATION PLAT

EXAMENDED REPORT

API Number	Pool Code	Pool Name Wildcat - Antelope Sink
Property Code	Property Name PATRON STATE	Well Number 1
GRID No. 025482	Operator Name XERIC OIL & GAS CORPORATION	Elevation 3732'

Surface Location

UL or lot No. 1	Section 8	Township 19-S	Range 24-E	Lot Idn	Feet from the 1980	North/South line SOUTH	Feet from the 660	East/West line EAST	County EDDY
--------------------	--------------	------------------	---------------	---------	-----------------------	---------------------------	----------------------	------------------------	----------------

Bottom Hole Location If Different From Surface

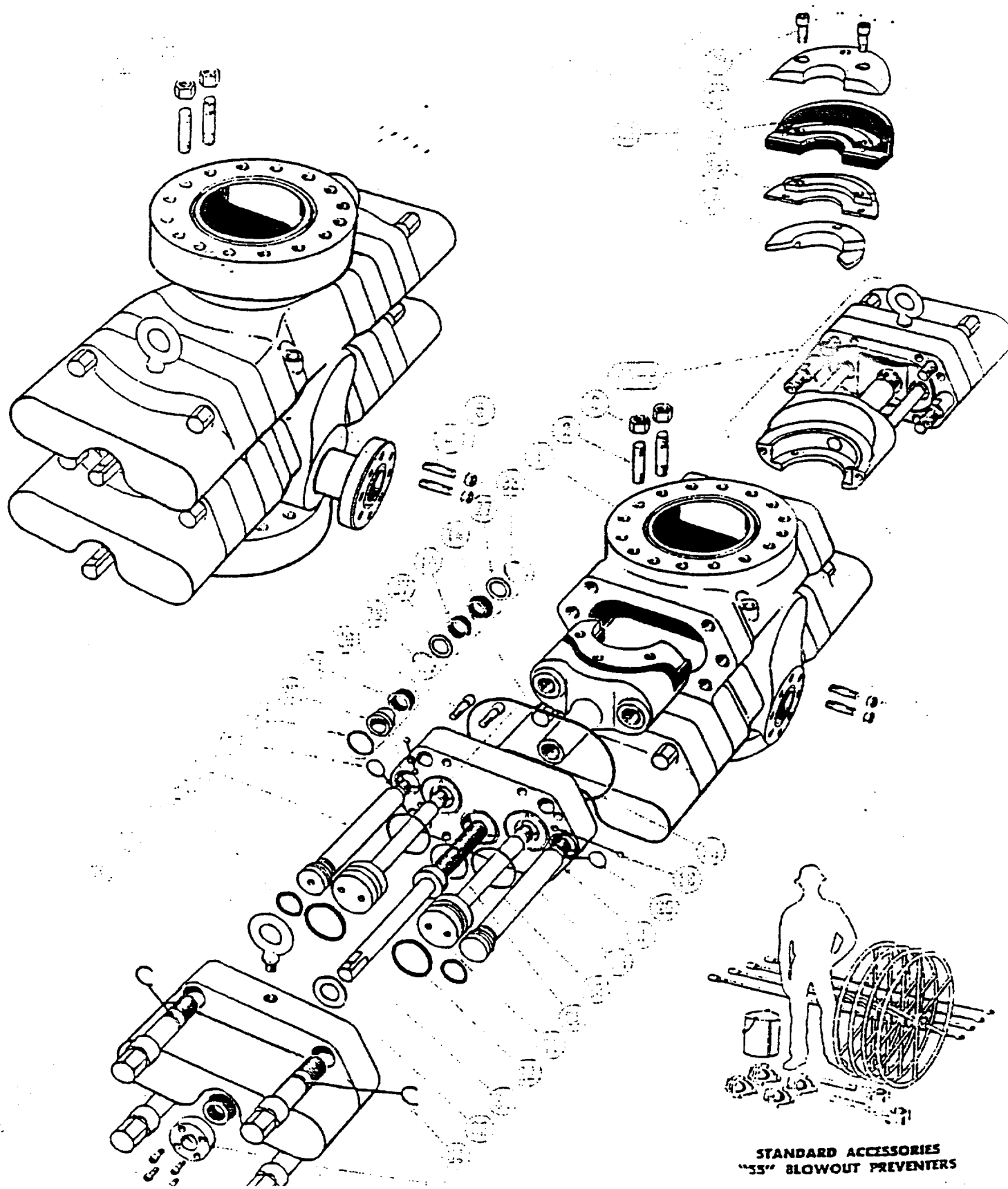
UL or lot No.	Section	Township	Range	Lot Idn	Feet from the	North/South line	Feet from the	East/West line	County
---------------	---------	----------	-------	---------	---------------	------------------	---------------	----------------	--------

Dedicated Acres 320	Joint or Infill	Consolidation Code	Order No.
------------------------	-----------------	--------------------	-----------

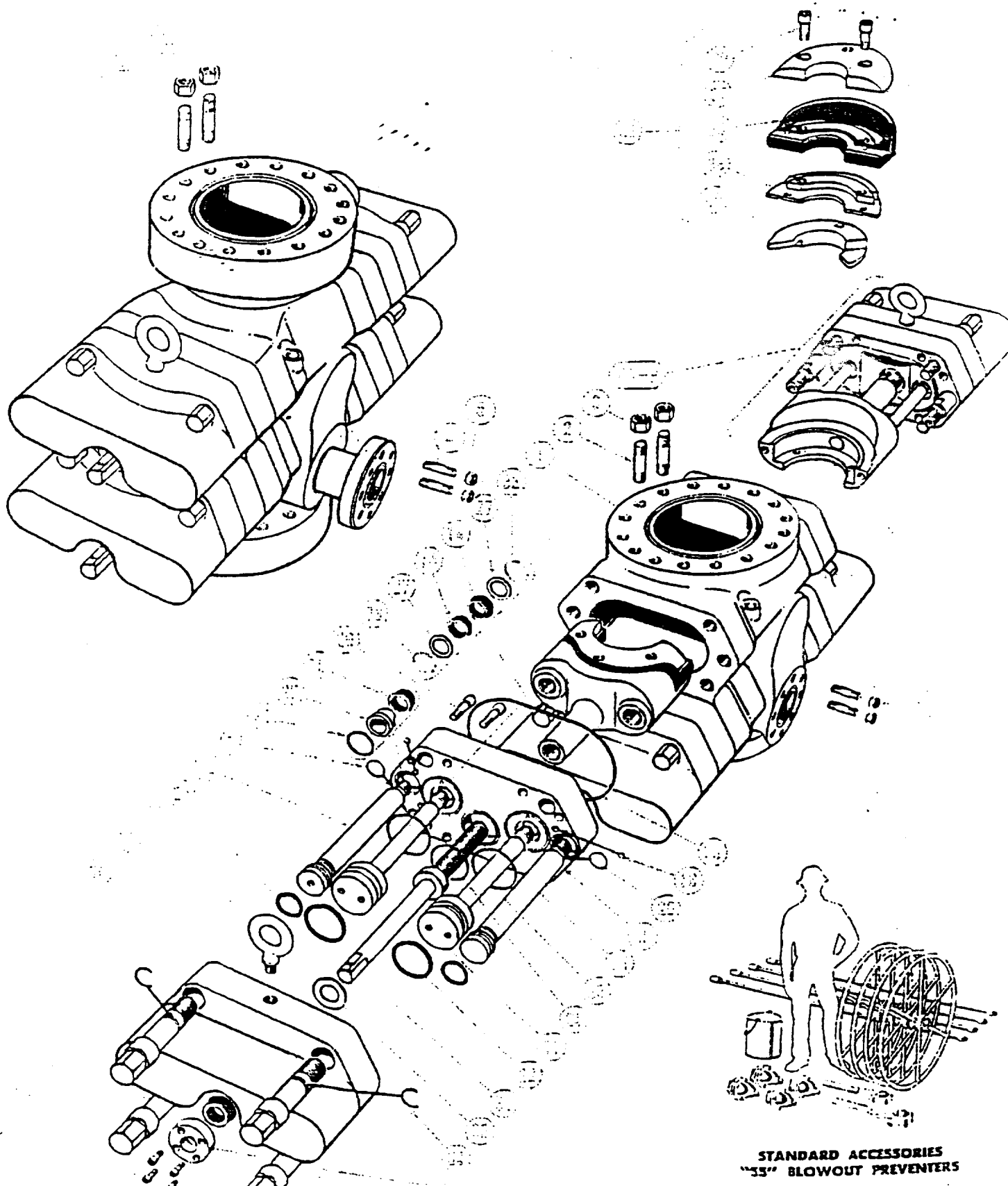
NO ALLOWABLE WILL BE ASSIGNED TO THIS COMPLETION UNTIL ALL INTERESTS HAVE BEEN CONSOLIDATED  
OR A NON-STANDARD UNIT HAS BEEN APPROVED BY THE DIVISION

	<p><b>OPERATOR CERTIFICATION</b></p> <p>I hereby certify the the information contained herein is true and complete to the best of my knowledge and belief.</p> <p><u>Glenda Hunt</u> Signature</p> <p>Glenda Hunt Printed Name</p> <p>Sr. Production Analyst Title</p> <p>4/9/02 Date</p>
	<p><b>SURVEYOR CERTIFICATION</b></p> <p>I hereby certify that the well location shown on this plat was plotted from field notes of actual surveys made by me or under my supervision and that the same is true and correct to the best of my belief.</p> <p>MARCH 28, 2002</p> <p>Date Surveyed Signature &amp; Seal of Professional Surveyor Certificate No. RONALD J. EIDSON 3239 GARY EIDSON 12641</p>

Because of the tremendous improvements offered by the type preventers, QSC and 55" preventers, in the future will be made only on special order. We are, of course, continuing to supply parts and rework service.

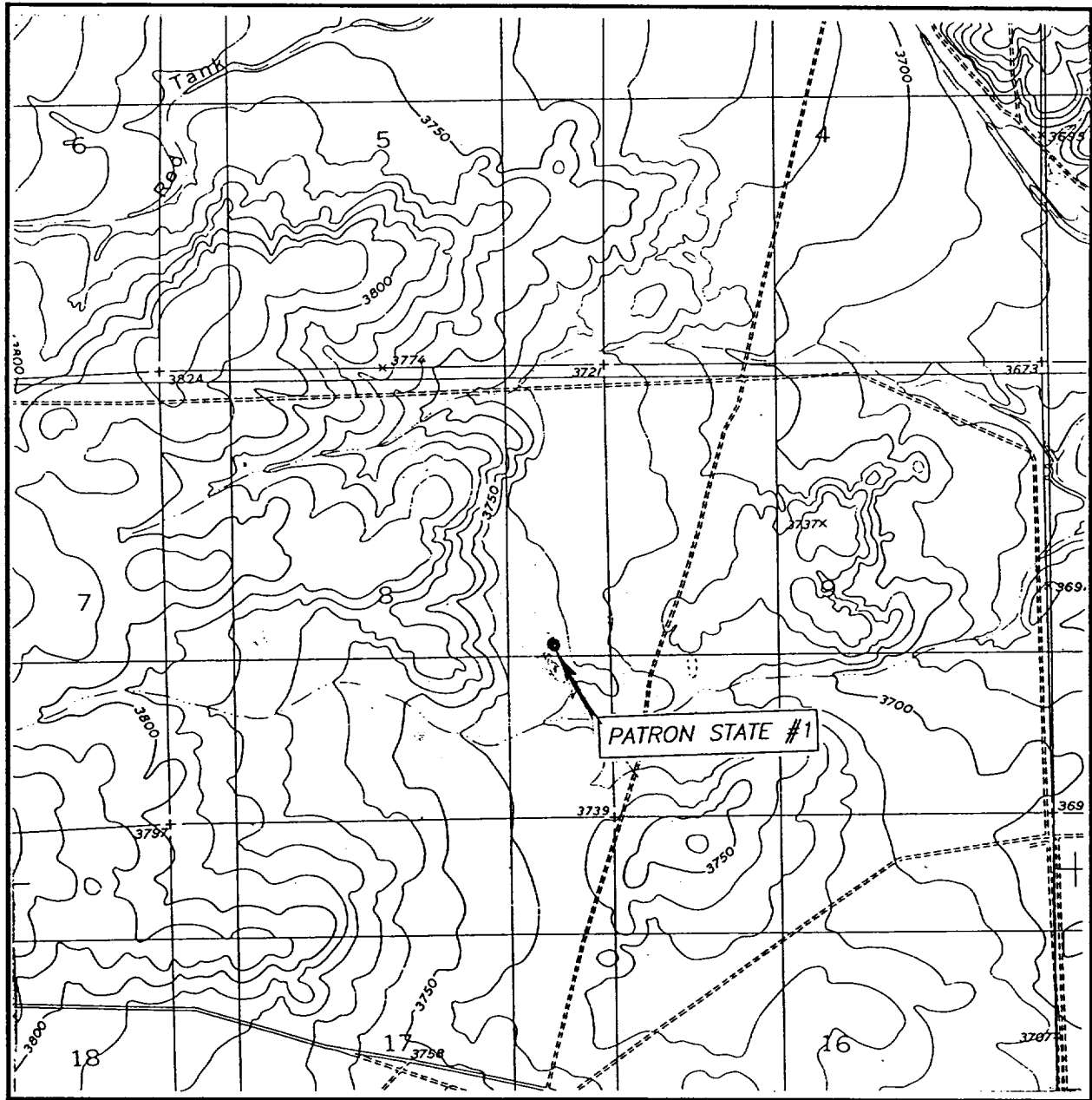


Because of the tremendous improvements offered by the type preventer, "QBC" and "SS" preventers, in the future, will be made only on special order. We are, at present, continuing to supply parts and rework service.



STANDARD ACCESSORIES  
"35" BLOWOUT PREVENTERS

# LOCATION VERIFICATION MAP



SCALE: 1" = 2000'

CONTOUR INTERVAL: 10'  
PARISH RANCH, N.M.

SEC. 8 TWP. 19-S RGE. 24-E

SURVEY N.M.P.M.

COUNTY EDDY

DESCRIPTION 1980' FSL & 660' FEL

ELEVATION 3732'

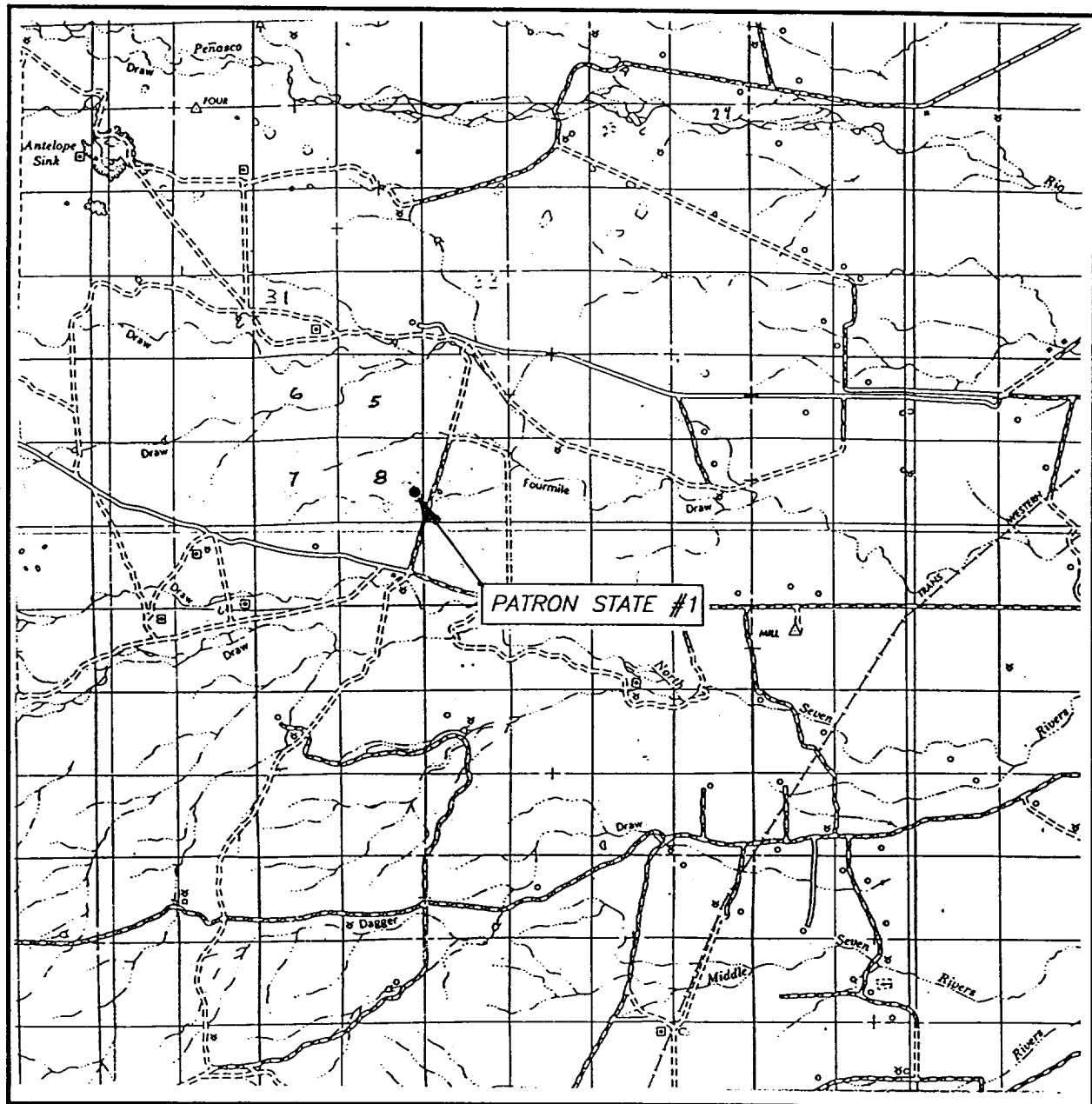
OPERATOR XERIC OIL & GAS CORPORATION

LEASE PATRON STATE

U.S.G.S. TOPOGRAPHIC MAP  
PARISH RANCH, N.M.

JOHN WEST SURVEYING  
HOBBS, NEW MEXICO  
(505) 393-3117

# VICINITY MAP



SCALE: 1" = 2 MILES

SEC. 8 TWP. 19-S RGE. 24-E

SURVEY N.M.P.M.

COUNTY EDDY

DESCRIPTION 1980' FSL & 660' FEL

ELEVATION 3732'

OPERATOR XERIC OIL & GAS CORPORATION

LEASE PATRON STATE

JOHN WEST SURVEYING  
HOBBS, NEW MEXICO  
(505) 393-3117