

District I
1625 N. French Dr., Hobbs, NM 88240
District II
811 South First, Artesia, NM 88210
District III
1000 Rio Brazos Road, Aztec, NM 87410
District IV
2040 South Pacheco, Santa Fe, NM 87505

State of New Mexico
Energy Minerals and Natural Resources

Oil Conservation Division
2040 South Pacheco
Santa Fe, NM 87505

Form C-101
Revised March 17, 1999

Submit to appropriate District Office
State Lease - 6 Copies
Fee Lease - 5 Copies

☐ AMENDED REPORT

APPLICATION FOR PERMIT TO DRILL, RE-ENTER, DEEPEN, PLUGBACK, OR ADD A ZONE

¹ Operator Name and Address Gruy Petroleum Management Co. P. O. Box 140907 Irving TX 75014-0907		² OGRID Number 162683
		³ API Number 30 - 015 - 32325
³ Property Code 21728	⁵ Property Name Parkway State Com	⁶ Well No. 2

Surface Location

UL or lot no.	Section	Township	Range	Lot Idn	Feet from the	North/South line	Feet from the	East/West line	County
D	15	19S	29E		990'	North	990'	West	Eddy

Proposed Bottom Hole Location If Different From Surface

UL or lot no.	Section	Township	Range	Lot Idn	Feet from the	North/South line	Feet from the	East/West line	County

⁹ Proposed Pool 1 Turkey Track (Morrow)	¹⁰ Proposed Pool 2 Turkey Track (Atoka)
-------------------------------------------------------	-------------------------------------------------------

¹¹ Work Type Code N	¹² Well Type Code G	¹³ Cable/Rotary R	¹⁴ Lease Type Code S	¹⁵ Ground Level Elevation 3341'
¹⁶ Multiple No	¹⁷ Proposed Depth 13000'	¹⁸ Formation Morrow / Atoka	¹⁹ Contractor Unknown	²⁰ Spud Date When Approved

Proposed Casing and Cement Program

Hole Size	Casing Size	Casing weight/foot	Setting Depth	Sacks of Cement	Estimated TOC
17-1/2"	H-40 13-3/8"	48 #	400' 250'	815 sx	Surface
11"	K-55 8-5/8"	24 #	3200'	1100 sx	Surface
7-7/8"	N-80/S-95	17 #	13000'	1200 sx	TOC 3000'

²² Describe the proposed program. If this application is to DEEPEN or PLUG BACK, give the data on the present productive zone and proposed new productive zone. Describe the blowout prevention program, if any. Use additional sheets if necessary.

The proposed well will be drilled to a depth of 13000' and completed as a Morrow / Atoka producer.
From the base of the surface pipe through the running of production casing, the well will be equipped with a 5000-psi BOP system.

²³ I hereby certify that the information given above is true and complete to the best of my knowledge and belief.		OIL CONSERVATION DIVISION	
Signature: <i>Zeno Farris</i>		Approved by: ORIGINAL SIGNED BY TIM W. GUM	
Printed name: Zeno Farris		Title: DISTRICT IV SUPERVISOR	
Title: Manager Operations Administration		Approval Date: JUN 04 2002 Expiration Date: JUN 04 2003	
Date: 04-25-02	Phone: 972-443-6489	Conditions of Approval:	
		Attached <input type="checkbox"/>	

DISTRICT I
1825 N. French Dr., Hobbs, NM 88240

DISTRICT II
811 South First, Artesia, NM 88210

DISTRICT III
1000 Rio Brazos Rd., Artec, NM 87410

DISTRICT IV
2040 South Pacheco, Santa Fe, NM 87505

State of New Mexico
Energy, Minerals and Natural Resources Department

Form C-102
Revised March 17, 1999

Submit to Appropriate District Office
State Lease - 4 Copies
Fee Lease - 3 Copies

OIL CONSERVATION DIVISION

2040 South Pacheco
Santa Fe, New Mexico 87504-2088

☐ AMENDED REPORT

WELL LOCATION AND ACREAGE DEDICATION PLAT

API Number	Pool Code	Pool Name
	86480	Turkey Track
Property Code	Property Name	Well Number
21728	PARKWAY STATE COM.	2
OGRID No.	Operator Name	Elevation
162683	GRUY PETROLEUM MANAGEMENT COMPANY	3341'

Surface Location

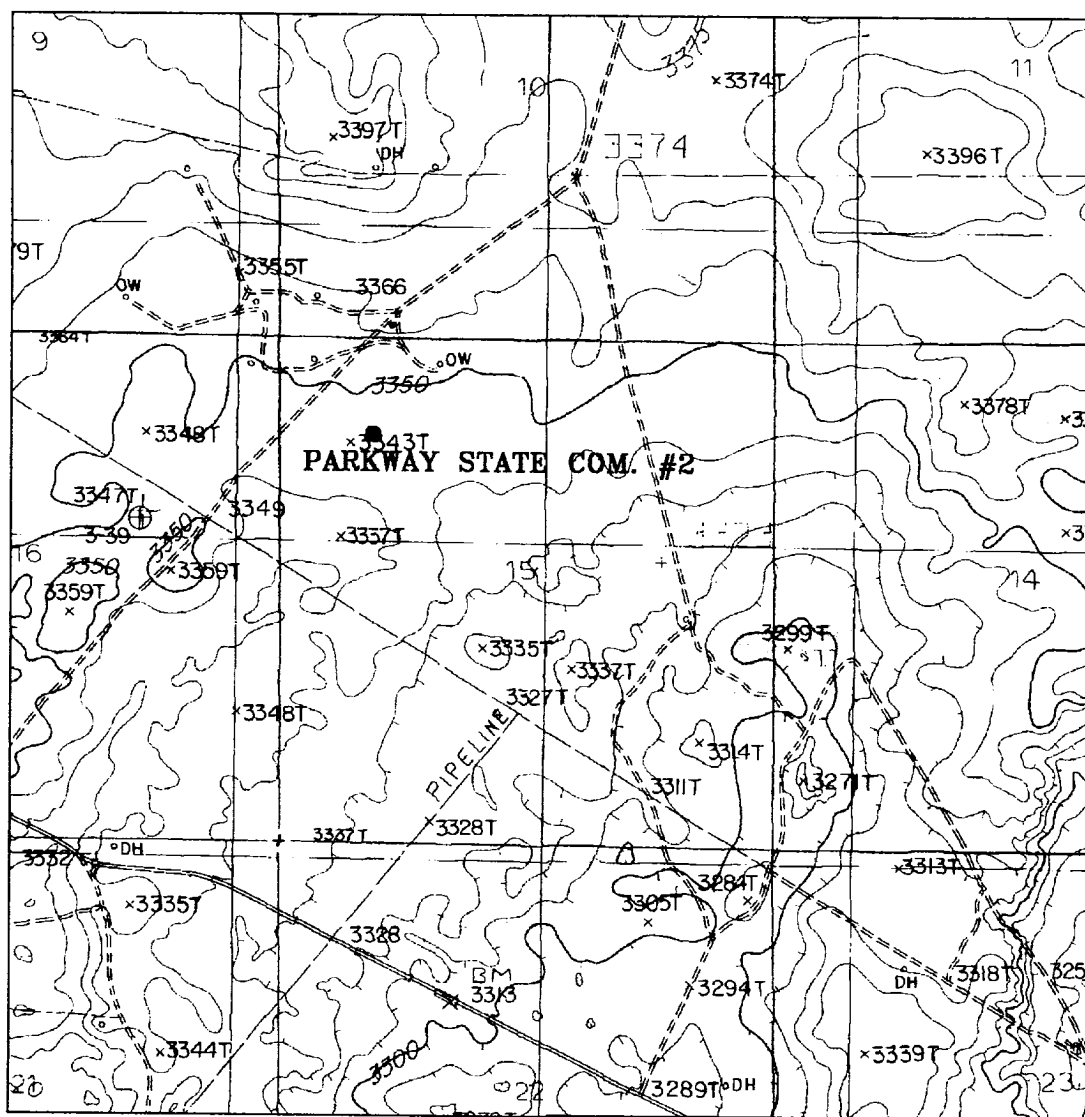
UL or lot No.	Section	Township	Range	Lot Idn	Feet from the	North/South line	Feet from the	East/West line	County
D	15	19 S	29 E		990	NORTH	990	WEST	EDDY

Bottom Hole Location If Different From Surface

UL or lot No.	Section	Township	Range	Lot Idn	Feet from the	North/South line	Feet from the	East/West line	County
Dedicated Acres	Joint or Infill	Consolidation Code	Order No.						
32c									

NO ALLOWABLE WILL BE ASSIGNED TO THIS COMPLETION UNTIL ALL INTERESTS HAVE BEEN CONSOLIDATED
OR A NON-STANDARD UNIT HAS BEEN APPROVED BY THE DIVISION

	<p>OPERATOR CERTIFICATION</p> <p>I hereby certify the the information contained herein is true and complete to the best of my knowledge and belief.</p> <p><i>Zeno Farris</i> Signature</p> <p>Zeno Farris Printed Name</p> <p>Manager Operations, Admin. Title</p> <p>05-30-02 Date</p> <p>SURVEYOR CERTIFICATION</p> <p>I hereby certify that the well location shown on this plat was plotted from field notes of actual surveys made by me or under my supervision, and that the same is true and correct to the best of my belief.</p> <p>January 4, 2001 Date Surveyed</p> <p><i>GARY L. JONES</i> Signature & Seal of Professional Surveyor</p> <p>W.O. No. 07344 Certificate No. Gary L. Jones 7977</p> <p>DRAIN SURVEYS</p>
--	-------------------------------------------------------------------------------------------------------------------------------------------------------------------------------------------------------------------------------------------------------------------------------------------------------------------------------------------------------------------------------------------------------------------------------------------------------------------------------------------------------------------------------------------------------------------------------------------------------------------------------------------------------------------------------------------------------------------------------------------------------------------------------------------



PARKWAY STATE COM. #2

Located at 990' FNL and 990' FWL

Section 15, Township 19 South, Range 29 East,
N.M.P.M., Eddy County, New Mexico.

basin
surveys

focused on excellence
in the oilfield

P.O. Box 1786
1120 N. West County Rd.
Hobbs, New Mexico 88241
(505) 393-7316 - Office
(505) 392-3074 - Fax
basinsurveys.com

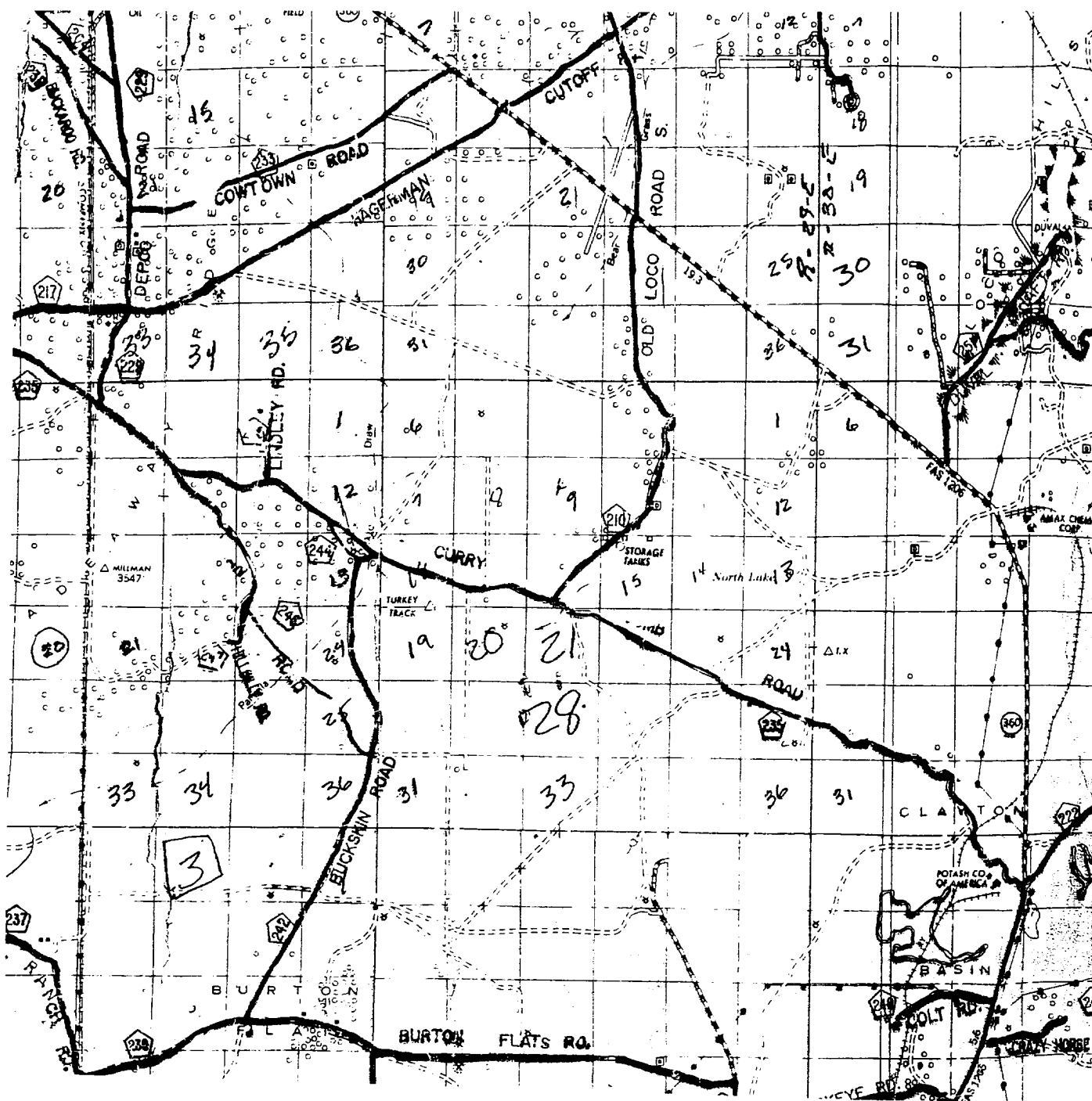
W.O. Number: 0734AA - KJG CD#3

Survey Date: 01-04-2001

Scale: 1" = 2000'

Date: 01-05-2001

GRUY PETROLEUM
MANAGEMENT
COMPANY



PARKWAY STATE COM. #2

Located at 990' FNL and 990' FWL

Section 15, Township 19 South, Range 29 East,
N.M.P.M., Eddy County, New Mexico.

basin
surveys

focused on excellence
in the oilfield

P.O. Box 1786
1120 N. West County Rd.
Hobbs, New Mexico 88241
(505) 393-7316 - Office
(505) 392-3074 - Fax
basinsurveys.com

W.O. Number: 0734AA - KJG CD#3

Survey Date: 01-04-2001

Scale: 1" = 2 MILES

Date: 01-05-2001

GRUY PETROLEUM
MANAGEMENT
COMPANY