

District I
1625 N. French Dr., Hobbs, NM 88240
District II
811 South First, Artesia, NM 88210
District III
1000 Rio Brazos Road, Aztec, NM 87410
District IV
2040 South Pacheco, Santa Fe, NM 87505

State of New Mexico
Energy Minerals and Natural Resources

Oil Conservation Division
2040 South Pacheco
Santa Fe, NM 87505

Form C-101
Revised March 17, 1999

Submit to appropriate District Office
State Lease - 6 Copies
Fee Lease - 5 Copies

☐ AMENDED REPORT

APPLICATION FOR PERMIT TO DRILL, RE-ENTER, DEEPEN, PLUG BACK, OR ADD A ZONE

Operator Name and Address POGO PRODUCING COMPANY P.O. BOX 10340 MIDLAND, TEXAS 79702-7440		OGRID Number 17891
Property Code 20694		API Number 30-015-32471
Property Name PECOS "32" STATE		Well No. 1

Surface Location

UL or lot no.	Section	Township	Range	Lot 1/4	Feet from the	North/South line	Feet from the	East/West line	County
H	32	19S	27E		1980'	North	990'	East	EDDY

Proposed Bottom Hole Location If Different From Surface

UL or lot no.	Section	Township	Range	Lot 1/4	Feet from the	North/South line	Feet from the	East/West line	County
Proposed Pool 1 McMILLIAN MORROW NORTH (GAS) (81240)					Proposed Pool 2				

Work Type Code N	Well Type Code G	Cable/Rotary ROTARY	Lease Type Code S	Ground Level Elevation 3421' GR.
Multiple NO	Proposed Depth 11,000'	Formation MORROW	Contractor UNKNOWN	Spud Date WHEN APPROVED

Proposed Casing and Cement Program

Hole Size	Casing Size	Casing weight/foot	Setting Depth	Sacks of Cement	Estimated TOC
25"	20"	NA	40'	Redi-mix	SURFACE
17½"	13 3/8"	48	500'	550 Sx.	SURFACE
12½"	9 5/8"	40.5	3000'	1200 Sx.	SURFACE
8½", 7 7/8"*	5½"	17	11,000	1000 Sx.	Est. TOC 2000
* Max 13 3/8" casing depth 250' BGP					

Describe the proposed program. If this application is to DEEPEN or PLUG BACK, give the data on the present productive zone and proposed new productive zone. Describe the blowout prevention program, if any. Use additional sheets if necessary.

1. Drill 25" hole to 40'. Set 40' of 20" conductor pipe and cement to surface with Redi-mix.
2. Drill 17½" hole to ~~500'~~. Run and set 500' of 13 3/8" 48# H-40 ST&C casing. Cement with 550 Sx. of Class "C" cement + 2% CaCl₂ + ½# Flocele/Sx., circulate cement to surface.
3. Drill 12½" hole to 3000'. Run and set 3000' of 9 5/8" 40.5# J-55 ST&C casing. Cement with 1200 Sx. of Class "C" cement + additives, circulate cement to surface.
4. Drill 8½" hole through the Cisco at 9000'±, if no lost circulation problems occur, reduce hole to 7 7/8" and drill to a total depth of 11,000'. Run and set 11,000' of 5½" casing as follows: 3000' of 5½" 17# N-80 LT&C, 6000' of 5½" 17# J-55 LT&C, 2000' of 5½" 17# N-80 LT&C casing. Cement in 3 stages with DV Tools at 9100' & 6000'. Cement with 1000 Sx. of Class "H" cement Plus additives. Estimate top of cement 2000' from surface.

I hereby certify that the information given above is true and complete to the best of my knowledge and belief.

Signature:

Printed name: Joe T. Janica

Title: Agent

Date: 10/17/02

Phone: 505-391-8503

OIL CONSERVATION DIVISION

Approved by:

ORIGINAL SIGNED BY TIM W. GUM
DISTRICT II SUPERVISOR

Title:

Approval Date: OCT 18 2002 Expiration Date: OCT 18 2003

Conditions of Approval:

Attached: ☐

DISTRICT I
P.O. Box 1980, Hobbs, NM 88241-1980

DISTRICT II
P.O. Drawer DD, Artesia, NM 88211-0719

DISTRICT III
1000 Rio Brazos Rd., Aztec, NM 87410

State of New Mexico

Energy, Minerals and Natural Resources Department

OIL CONSERVATION DIVISION

P.O. Box 2088

Santa Fe, New Mexico 87504-2088

Form C-102

Revised February 10, 1994

Submit to Appropriate District Office

State Lease - 4 Copies

Fee Lease - 3 Copies

DISTRICT IV
P.O. BOX 2088, SANTA FE, N.M. 87504-2088

WELL LOCATION AND ACREAGE DEDICATION PLAT

☐ AMENDED REPORT

API Number	Pool Code	Pool Name
	81240	McMILLIAN MORROW NORTH (GAS)
Property Code	Property Name	Well Number
	PECOS "32"	1
OGRID No.	Operator Name	Elevation
17891	POGO PRODUCING COMPANY	3421'

Surface Location									
UL or lot No.	Section	Township	Range	Lot Idn	Feet from the	North/South line	Feet from the	East/West line	County
H	32	19-S	27-E		1980	NORTH	990	EAST	EDDY

Bottom Hole Location If Different From Surface									
UL or lot No.	Section	Township	Range	Lot Idn	Feet from the	North/South line	Feet from the	East/West line	County
Dedicated Acres	Joint or Infill	Consolidation Code	Order No.						
320									

NO ALLOWABLE WILL BE ASSIGNED TO THIS COMPLETION UNTIL ALL INTERESTS HAVE BEEN CONSOLIDATED OR A NON-STANDARD UNIT HAS BEEN APPROVED BY THE DIVISION

OPERATOR CERTIFICATION

I hereby certify the the information contained herein is true and complete to the best of my knowledge and belief.

Joe T. Janica
Signature

Joe T. Janica
Printed Name

Agent

Title

10/17/02
Date

SURVEYOR CERTIFICATION

I hereby certify that the well location shown on this plat was plotted from field notes of actual surveys made by me or under my supervision, and that the same is true and correct to the best of my belief.

OCTOBER 11, 2002

Date Surveyed

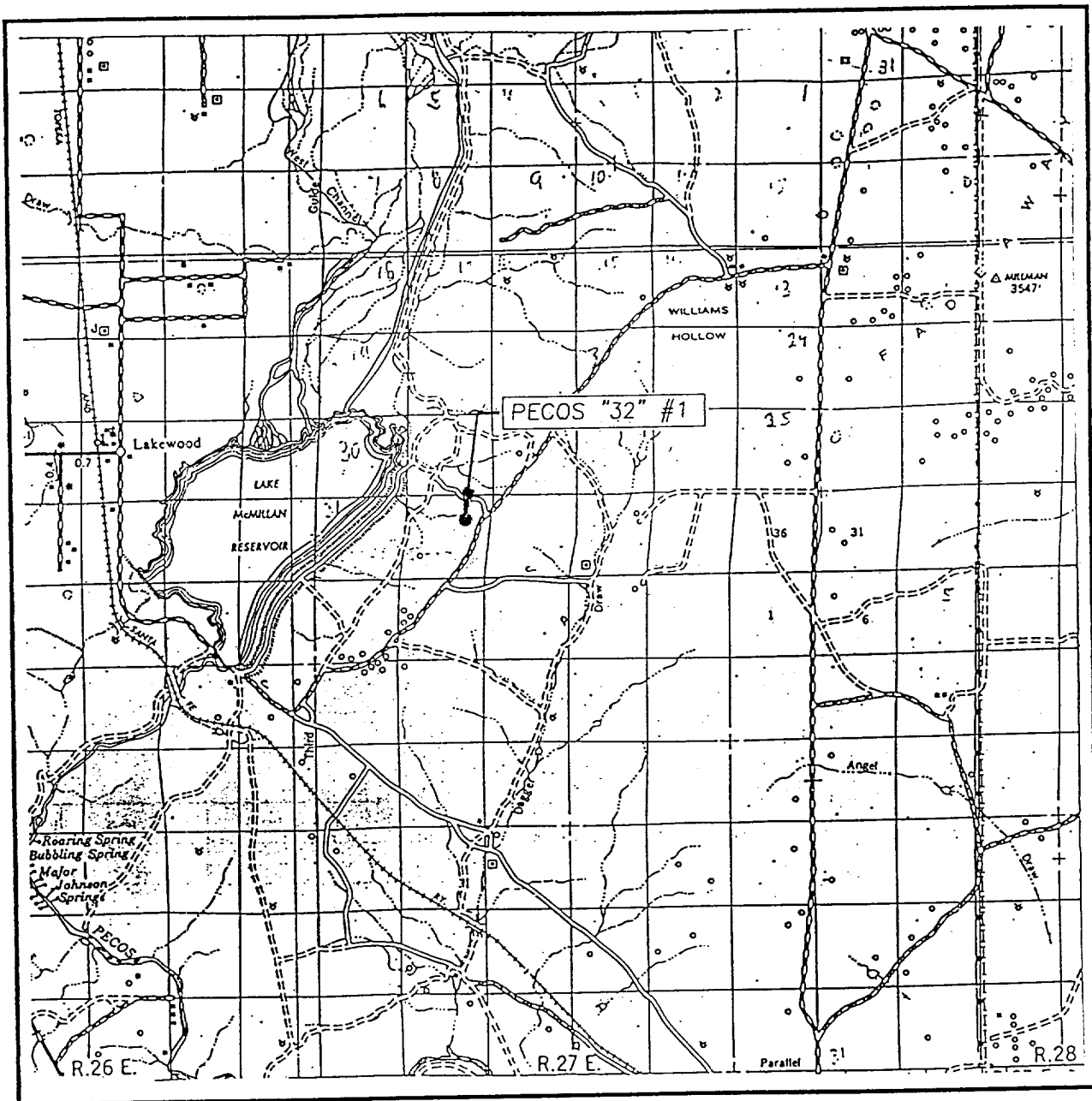
Signature & Seal of Professional Surveyor

Ronald J. Edson
Professional Surveyor

02.11.0765

Certificate No. RONALD J. EDSON 3239
GARY EDSON 12641

VICINITY MAP



SCALE: 1" = 2 MILES

SEC. 32 TWP. 19-S RGE. 27-E

SURVEY N.M.P.M.

COUNTY EDDY

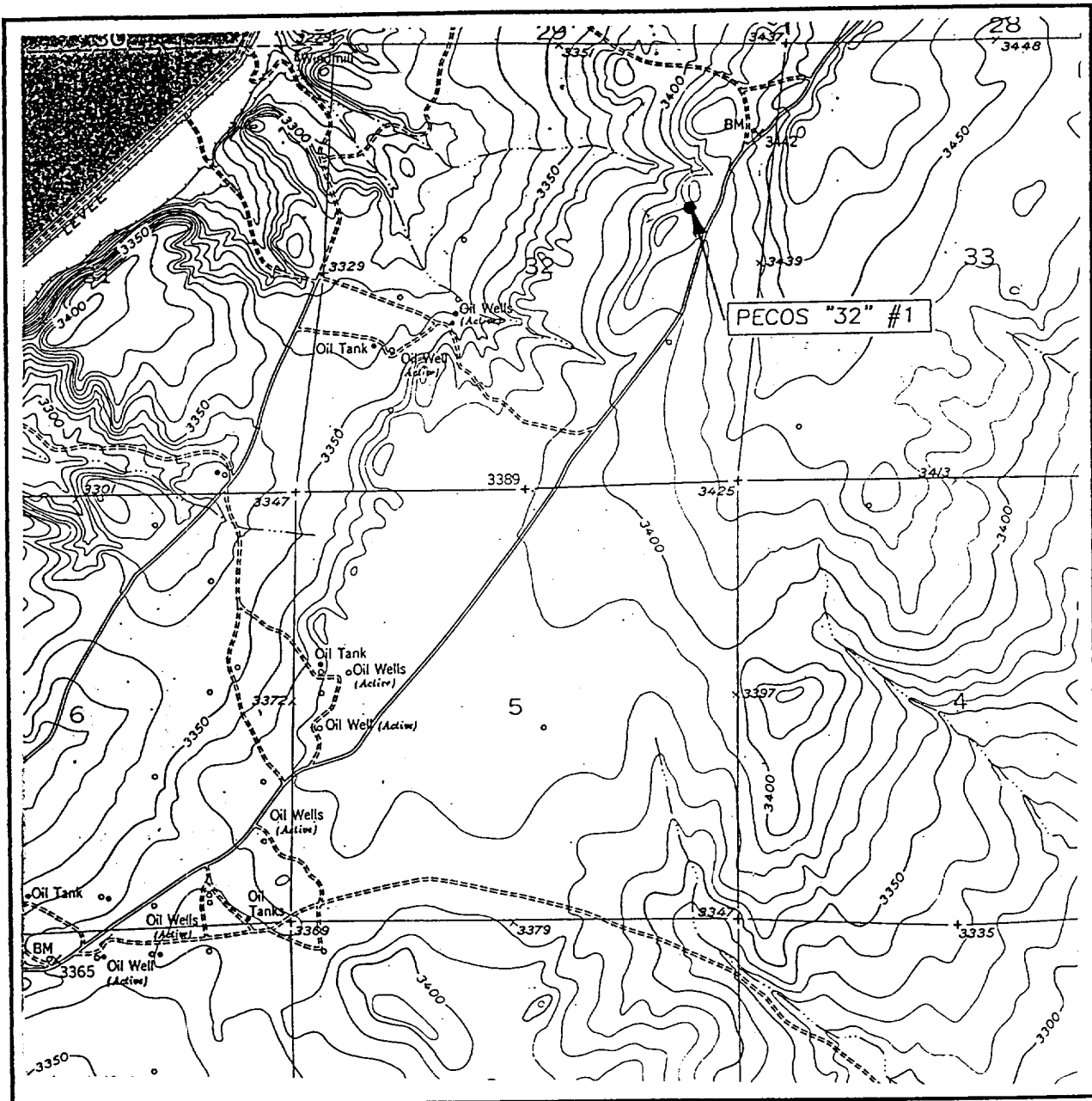
DESCRIPTION 1980' FNL & 990' FWL

ELEVATION 3421'

OPERATOR POGO PRODUCING COMPANY

LEASE PECOS "32"

JOHN WEST SURVEYING
HOBBS, NEW MEXICO
(505) 393-3117



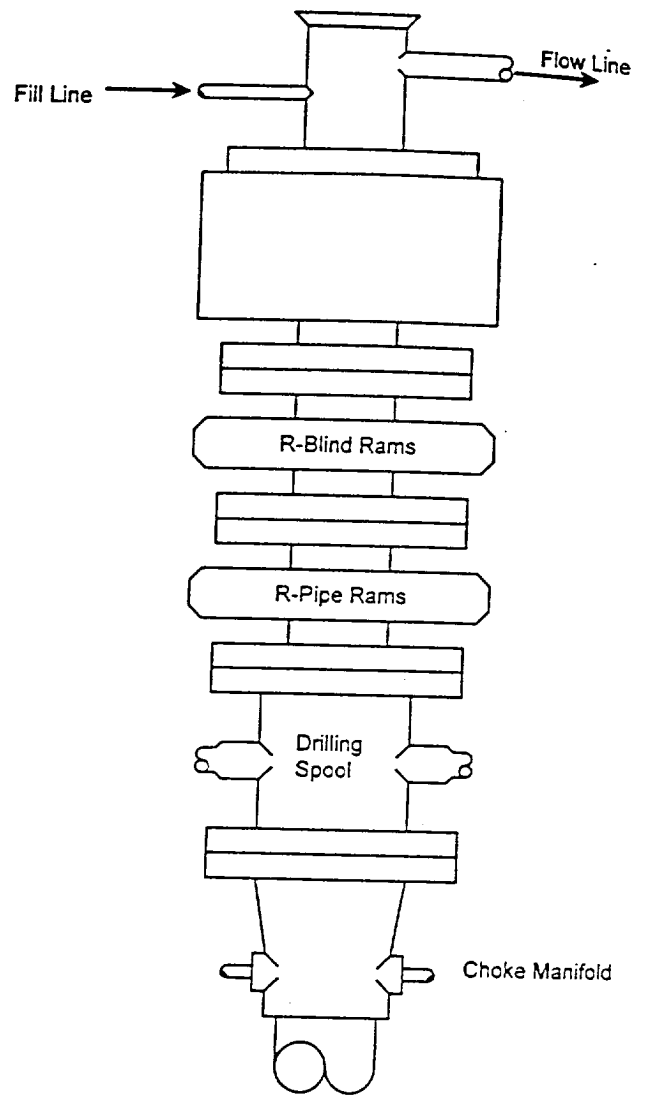
CONTOUR INTERVAL: 10'
LAKE McMILLAN SOUTH, N.M.

U.S.G.S. TOPOGRAPHIC MAP
LAKE McMILLAN SOUTH, N.M.

JOHN WEST SURVEYING
HOBBS, NEW MEXICO
(505) 393-3117

BLOWOUT PREVENTER SYSTEM

5000 PSI



Type 1500 SERIES
5000 psi WP

Choke Manifold Assembly for 5M WP System

