

DISTRICT I
P.O. Box 1980, Hobbs, NM 88241-1980

State of New Mexico
Energy, Minerals and Natural Resources Department

Form C-102
Revised February 10, 1994
Submit to Appropriate District Office
State Lease - 4 Copies
Fee Lease - 3 Copies

DISTRICT II
P.O. Drawer DD, Artesia, NM 88211-0719

OIL CONSERVATION DIVISION

P.O. Box 2088
Santa Fe, New Mexico 87504-2088

DISTRICT III
1000 Rio Brazos Rd., Aztec, NM 87410

DISTRICT IV
P.O. BOX 2088, SANTA FE, N.M. 87504-2088

WELL LOCATION AND ACREAGE DEDICATION PLAT

☐ AMENDED REPORT

API Number	Pool Code 81240	Pool Name McMILLIAN MORROW NORTH GAS
Property Code	Property Name PECOS "32"	Well Number 3
OGRID No. 17891	Operator Name POGO PRODUCING COMPANY	Elevation 3379'

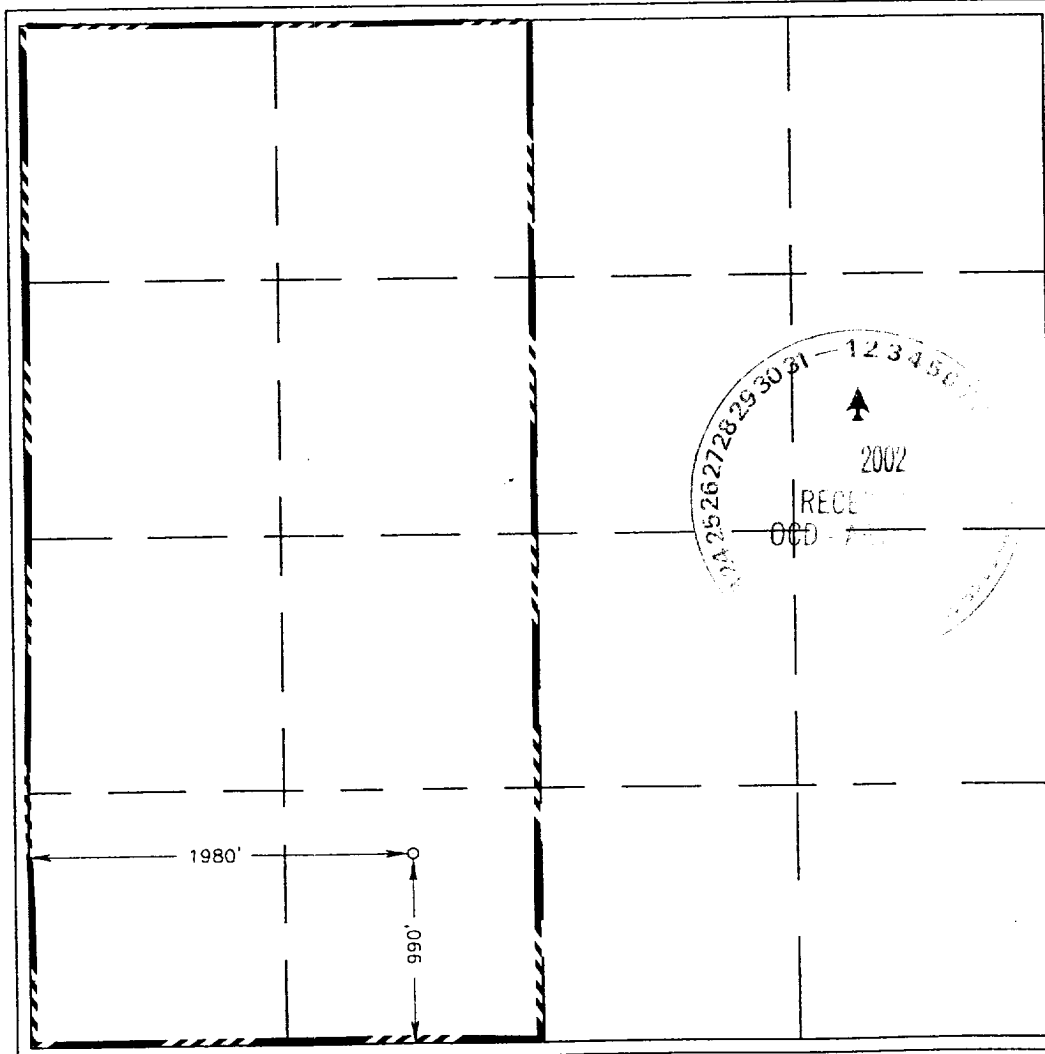
Surface Location

UL or lot No. N	Section 32	Township 19-S	Range 27-E	Lot Idn	Feet from the 990	North/South line SOUTH	Feet from the 1980	East/West line WEST	County EDDY
--------------------	---------------	------------------	---------------	---------	----------------------	---------------------------	-----------------------	------------------------	----------------

Bottom Hole Location If Different From Surface

UL or lot No.	Section	Township	Range	Lot Idn	Feet from the	North/South line	Feet from the	East/West line	County
Dedicated Acres 320	Joint or Infill	Consolidation Code	Order No.						

NO ALLOWABLE WILL BE ASSIGNED TO THIS COMPLETION UNTIL ALL INTERESTS HAVE BEEN CONSOLIDATED
OR A NON-STANDARD UNIT HAS BEEN APPROVED BY THE DIVISION



OPERATOR CERTIFICATION	
I hereby certify the the information contained herein is true and complete to the best of my knowledge and belief.	
Signature <i>Joe T. Janica</i>	
Printed Name Joe T. Janica	
Agent	
Title 10/31/02	
Date	
SURVEYOR CERTIFICATION	
I hereby certify that the well location shown on this plat was plotted from field notes of actual surveys made by me or under my supervision, and that the same is true and correct to the best of my belief.	
OCTOBER 30, 2002	
Date Surveyed	A.W.B.
Signature & Seal of Professional Surveyor <i>Ronald J. Edson</i>	
Certificate No. 82-11-0768	
Professional Surveyor RONALD J. EDSON	3239 12641