

WELL LOCATION
SURVEY
for

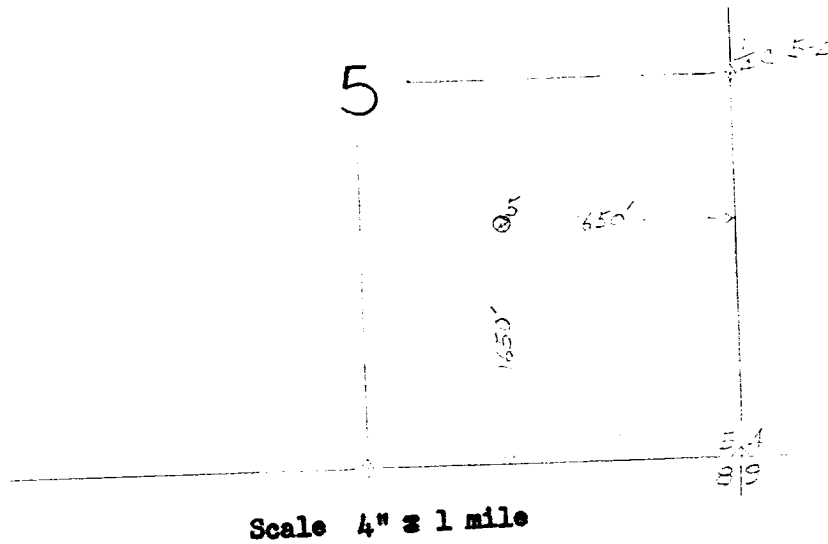
George D. Riggs

Welch-Fedral No. 5

1650 feet from south line
1650 feet from east line

Sec. 5, T.21 S, R 27 E
N.M.P.M.

Eddy Co., New Mexico



This is to certify that the above plat is
a correct representation of the survey
as made by me in the field.

Geo. D. Riggs Sept. 30 1953