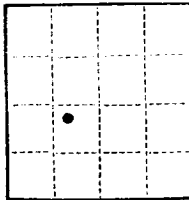


Form 9-331a
(Feb. 1951)



(SUBMIT IN TRIPLICATE)

UNITED STATES
DEPARTMENT OF THE INTERIOR
GEOLOGICAL SURVEY

Land Office New Mexico

Lease No. NM 08277

Unit _____

SUNDRY NOTICES AND REPORTS ON WELLS

NOTICE OF INTENTION TO DRILL.....	<input checked="" type="checkbox"/>	SUBSEQUENT REPORT OF WATER SHUT-OFF.....
NOTICE OF INTENTION TO CHANGE PLANS.....	<input type="checkbox"/>	SUBSEQUENT REPORT OF SHOOTING OR ACIDIZING.....
NOTICE OF INTENTION TO TEST WATER SHUT-OFF.....	<input type="checkbox"/>	SUBSEQUENT REPORT OF ALTERING CASING.....
NOTICE OF INTENTION TO RE-DRILL OR REPAIR WELL.....	<input type="checkbox"/>	SUBSEQUENT REPORT OF RE-DRILLING OR REPAIR.....
NOTICE OF INTENTION TO SHOOT OR ACIDIZE.....	<input type="checkbox"/>	SUBSEQUENT REPORT OF ABANDONMENT.....
NOTICE OF INTENTION TO PULL OR ALTER CASING.....	<input type="checkbox"/>	SUPPLEMENTARY WELL HISTORY.....
NOTICE OF INTENTION TO ABANDON WELL.....	<input type="checkbox"/>	

(INDICATE ABOVE BY CHECK MARK NATURE OF REPORT, NOTICE, OR OTHER DATA)

Aug. 11, 1936

Well No. 3 Hughes is located 2310 ft. from N line and 1650 ft. from E line of sec. 33

NW NE SW Sec. 33 20 S 28 E N. W. P. M.

wildcat Eddy Co. New Mexico

The elevation of the derrick floor above sea level is 3202 ft.

DETAILS OF WORK

(State names of and expected depths to objective sands; show sizes, weights, and lengths of proposed casings; indicate mudding jobs, cementing points, and all other important proposed work)

8 3/4 inch hole will be drilled through the surface water at about 75 to 100 ft. where 7 inch water string will be set in mud and left in the hole.

6' inch hole will be drilled to top of Yates formation where 5 1/2 inch pipe will be run, at about 650', and cemented back to the surface.

4 7/8 inch hole will be drilled through the sand and the well will be completed for production, or abandoned if dry.

I understand that this plan of work must receive approval in writing by the Geological Survey before operations may be commenced.

Company Geo. D. Riggs

Address Box 30

Carlsbad, New Mex.

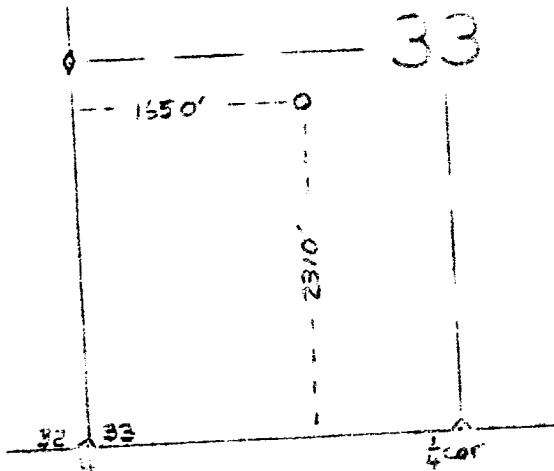
By Geo. D. Riggs

Title operator

WELL LOCATION
SURVEY
for

Geo. D. Riggs

#3 Hughes - Fedral 08277
2310 feet from south line
1650 feet from west line
Sec. 33, T 20 S, R 28 E
N. M. P. M.
Eddy Co., New Mexico



Scale 4" = 1 mile

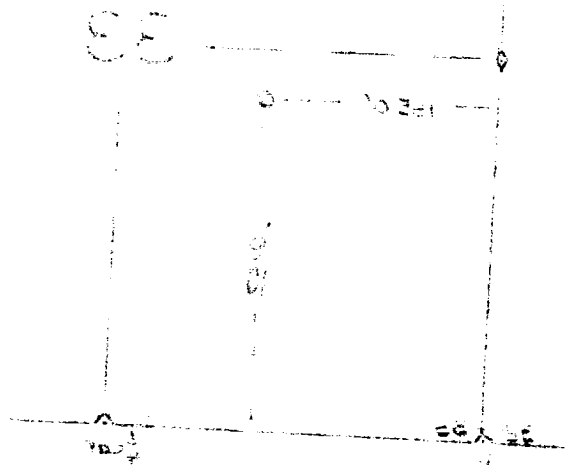
This is to certify that the above plat is
a correct representation of the survey as
made by me in the field.

Geo. D. Riggs Aug. 4, 1956
Geo. D. Riggs

४३१

THAN 1941 - 1942
and 1943 - 1944
and 1945 - 1946
and 1947 - 1948
and 1949 - 1950
and 1951 - 1952
and 1953 - 1954
and 1955 - 1956
and 1957 - 1958
and 1959 - 1960
and 1961 - 1962
and 1963 - 1964
and 1965 - 1966
and 1967 - 1968
and 1969 - 1970
and 1971 - 1972
and 1973 - 1974
and 1975 - 1976
and 1977 - 1978
and 1979 - 1980
and 1981 - 1982
and 1983 - 1984
and 1985 - 1986
and 1987 - 1988
and 1989 - 1990
and 1991 - 1992
and 1993 - 1994
and 1995 - 1996
and 1997 - 1998
and 1999 - 2000
and 2001 - 2002
and 2003 - 2004
and 2005 - 2006
and 2007 - 2008
and 2009 - 2010
and 2011 - 2012
and 2013 - 2014
and 2015 - 2016
and 2017 - 2018
and 2019 - 2020
and 2021 - 2022
and 2023 - 2024
and 2025 - 2026
and 2027 - 2028
and 2029 - 2030
and 2031 - 2032
and 2033 - 2034
and 2035 - 2036
and 2037 - 2038
and 2039 - 2040
and 2041 - 2042
and 2043 - 2044
and 2045 - 2046
and 2047 - 2048
and 2049 - 2050
and 2051 - 2052
and 2053 - 2054
and 2055 - 2056
and 2057 - 2058
and 2059 - 2060
and 2061 - 2062
and 2063 - 2064
and 2065 - 2066
and 2067 - 2068
and 2069 - 2070
and 2071 - 2072
and 2073 - 2074
and 2075 - 2076
and 2077 - 2078
and 2079 - 2080
and 2081 - 2082
and 2083 - 2084
and 2085 - 2086
and 2087 - 2088
and 2089 - 2090
and 2091 - 2092
and 2093 - 2094
and 2095 - 2096
and 2097 - 2098
and 2099 - 2100
and 2101 - 2102
and 2103 - 2104
and 2105 - 2106
and 2107 - 2108
and 2109 - 2110
and 2111 - 2112
and 2113 - 2114
and 2115 - 2116
and 2117 - 2118
and 2119 - 2120
and 2121 - 2122
and 2123 - 2124
and 2125 - 2126
and 2127 - 2128
and 2129 - 2130
and 2131 - 2132
and 2133 - 2134
and 2135 - 2136
and 2137 - 2138
and 2139 - 2140
and 2141 - 2142
and 2143 - 2144
and 2145 - 2146
and 2147 - 2148
and 2149 - 2150
and 2151 - 2152
and 2153 - 2154
and 2155 - 2156
and 2157 - 2158
and 2159 - 2160
and 2161 - 2162
and 2163 - 2164
and 2165 - 2166
and 2167 - 2168
and 2169 - 2170
and 2171 - 2172
and 2173 - 2174
and 2175 - 2176
and 2177 - 2178
and 2179 - 2180
and 2181 - 2182
and 2183 - 2184
and 2185 - 2186
and 2187 - 2188
and 2189 - 2190
and 2191 - 2192
and 2193 - 2194
and 2195 - 2196
and 2197 - 2198
and 2199 - 2200
and 2201 - 2202
and 2203 - 2204
and 2205 - 2206
and 2207 - 2208
and 2209 - 2210
and 2211 - 2212
and 2213 - 2214
and 2215 - 2216
and 2217 - 2218
and 2219 - 2220
and 2221 - 2222
and 2223 - 2224
and 2225 - 2226
and 2227 - 2228
and 2229 - 2230
and 2231 - 2232
and 2233 - 2234
and 2235 - 2236
and 2237 - 2238
and 2239 - 2240
and 2241 - 2242
and 2243 - 2244
and 2245 - 2246
and 2247 - 2248
and 2249 - 2250
and 2251 - 2252
and 2253 - 2254
and 2255 - 2256
and 2257 - 2258
and 2259 - 2260
and 2261 - 2262
and 2263 - 2264
and 2265 - 2266
and 2267 - 2268
and 2269 - 2270
and 2271 - 2272
and 2273 - 2274
and 2275 - 2276
and 2277 - 2278
and 2279 - 2280
and 2281 - 2282
and 2283 - 2284
and 2285 - 2286
and 2287 - 2288
and 2289 - 2290
and 2291 - 2292
and 2293 - 2294
and 2295 - 2296
and 2297 - 2298
and 2299 - 2300
and 2301 - 2302
and 2303 - 2304
and 2305 - 2306
and 2307 - 2308
and 2309 - 2310
and 2311 - 2312
and 2313 - 2314
and 2315 - 2316
and 2317 - 2318
and 2319 - 2320
and 2321 - 2322
and 2323 - 2324
and 2325 - 2326
and 2327 - 2328
and 2329 - 2330
and 2331 - 2332
and 2333 - 2334
and 2335 - 2336
and 2337 - 2338
and 2339 - 2340
and 2341 - 2342
and 2343 - 2344
and 2345 - 2346
and 2347 - 2348
and 2349 - 2350
and 2351 - 2352
and 2353 - 2354
and 2355 - 2356
and 2357 - 2358
and 2359 - 2360
and 2361 - 2362
and 2363 - 2364
and 2365 - 2366
and 2367 - 2368
and 2369 - 2370
and 2371 - 2372
and 2373 - 2374
and 2375 - 2376
and 2377 - 2378
and 2379 - 2380
and 2381 - 2382
and 2383 - 2384
and 2385 - 2386
and 2387 - 2388
and 2389 - 2390
and 2391 - 2392
and 2393 - 2394
and 2395 - 2396
and 2397 - 2398
and 2399 - 2400
and 2401 - 2402
and 2403 - 2404
and 2405 - 2406
and 2407 - 2408
and 2409 - 2410
and 2411 - 2412
and 2413 - 2414
and 2415 - 2416
and 2417 - 2418
and 2419 - 2420
and 2421 - 2422
and 2423 - 2424
and 2425 - 2426
and 2427 - 2428
and 2429 - 2430
and 2431 - 2432
and 2433 - 2434
and 2435 - 2436
and 2437 - 2438
and 2439 - 2440
and 2441 - 2442
and 2443 - 2444
and 2445 - 2446
and 2447 - 2448
and 2449 - 2450
and 2451 - 2452
and 2453 - 2454
and 2455 - 2456
and 2457 - 2458
and 2459 - 2460
and 2461 - 2462
and 2463 - 2464
and 2465 - 2466
and 2467 - 2468
and 2469 - 2470
and 2471 - 2472
and 2473 - 2474
and 2475 - 2476
and 2477 - 2478
and 2479 - 2480
and 2481 - 2482
and 2483 - 2484
and 2485 - 2486
and 2487 - 2488
and 2489 - 2490
and 2491 - 2492
and 2493 - 2494
and 2495 - 2496
and 2497 - 2498
and 2499 - 2500
and 2501 - 2502
and 2503 - 2504
and 2505 - 2506
and 2507 - 2508
and 2509 - 2510
and 2511 - 2512
and 2513 - 2514
and 2515 - 2516
and 2517 - 2518
and 2519 - 2520
and 2521 - 2522
and 2523 - 2524
and 252

Page 10 of 10



Page 1 of 4

This is to certify that the above plot is a correct representation of the survey as made by me in the field.

8871 *[Signature]*
August 10, 1960