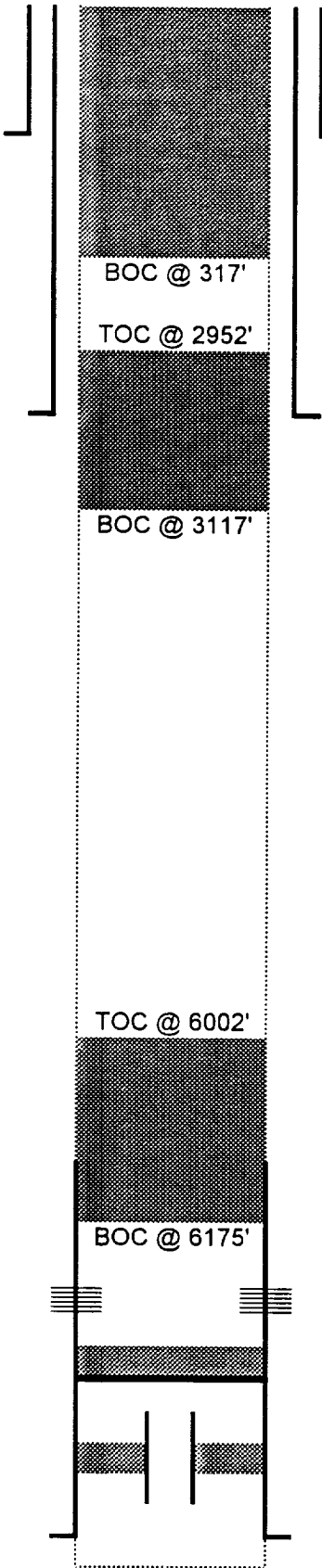


WELL DATA SHEET



FIELD: INDIAN BASIN  
WELL: INDIAN HILLS UNIT #1  
LOCATION: UNIT M, SEC. 21, T21S - R24E  
COUNTY: EDDY  
STATE: NM  
STATUS: PLUGGED & ABANDONED 8/92  
ELEVATIONS: 3670' GL & 3681' KB

13 3/8"  
@ 304'

9 5/8"  
@ 3098'

SURFACE: 13 3/8" 48# @ 304'; CMT W/ 960 SXS IN 8 STGS  
INTERMEDIATE: 9 5/8" 36# @ 3098' CMT W/ 1163 SXS, TOC @ 184' PMP 50 SXS NEAT CMT TO SURFACE  
PRODUCTION: 7" 29# N-80 FROM 6125' TO 10,160', CMT TO TOP

TOP 7"  
@ 6125'

COMPLETIONS: UPPER PENN: 7316'-7332', 7410'-7420', 7536'-7548' 7590'-7610', 7690'- 7740'

CIBP @ 9115'  
W/ 10 SXS CMT

MORROW: 9200'-9214'

LOK-SET PKR @ 9123'

7"  
@ 10,160'