

OIL CONSERVATION DIVISION

P.O. Box 2088

Santa Fe, New Mexico 87504-2088

DISTRICT I

P.O. Box 1980, Hobbs, NM 88240

DISTRICT II

P.O. Drawer DD, Artesia, NM 88210

DISTRICT III

1000 Rio Brazos Rd., Artesia, NM 87410

WELL LOCATION AND ACREAGE DEDICATION PLAT

All Distances must be from the outer boundaries of the section

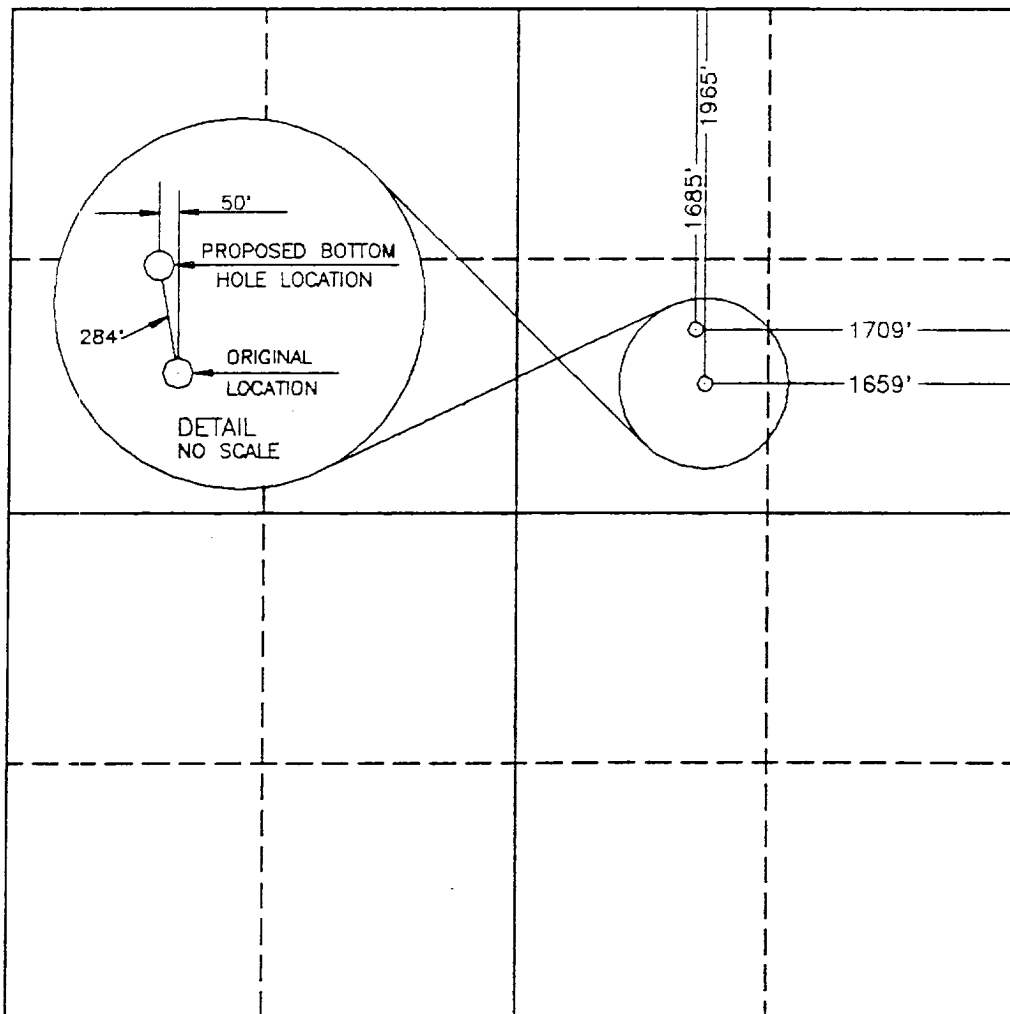
Operator ORYX ENERGY COMPANY			Lease WEST INDIAN BASIN UNIT		Well No. 2
Unit Letter G	Section 20	Township 21 SOUTH	Range 23 EAST	NMPM	County EDDY
Actual Footage Location of Well: 1965 feet from the NORTH line and 1659 feet from the EAST line					
Ground Level Elev. 3988.7	Producing Formation Upper Penn	Pool Indian Basin Upper Penn	Dedicated Acreage: 1.48 Acres		

1. Outline the acreage dedicated to the subject well by colored pencil or hatchure marks on the plat below.
2. If more than one lease is dedicated to the well, outline each and identify the ownership thereof (both as to working interest and royalty).
3. If more than one lease of different ownership is dedicated to the well, have the interest of all owners been consolidated by communitization, unitization, force-pooling, etc.?

☐ Yes ☐ No If answer is "yes" type of consolidation _____

If answer is "no" list of owners and tract descriptions which have actually been consolidated. (Use reverse side of this form necessary.)

No allowable will be assigned to the well unit all interests have been consolidated (by communitization, unitization, forced-pooling, otherwise) or until a non-standard unit, eliminating such interest, has been approved by the Division.



OPERATOR CERTIFICATION

I hereby certify the the information contained herein is true and complete to the best of my knowledge and belief.

Signature
Red L. Bailey
Printed Name
Red L. Bailey
Position
Analyst
Company
ORYX ENERGY
Date
11-12-93

SURVEYOR CERTIFICATION

I hereby certify that the well location shown on this plat was plotted from field notes of actual surveys made by me or under my supervision, and that the same is true and correct to the best of my knowledge and belief.

Date Surveyed
JULY 14, 1993

Signature & Seal of
Professional Surveyor

GARY L. JONES
Certification No. 678
JOHN W. WERT
RONALD J. GORDON
3239
7977
93-2225