

✓ 17 COPIES RECEIVED

DISTRIBUTION	
SANTA FE	1
FILE	1
U.S.G.S.	1
LAND OFFICE	1
TRANSPORTER	1
OIL GAS	1
PROBATION OFFICE	1
OPERATOR	1

NEW MEXICO OIL CONSERVATION COMMISSION
Santa Fe, New Mexico

Form C-101
Revised (12/1/55)

NOTICE OF INTENTION TO DRILL

Notice must be given to the District Office of the Oil Conservation Commission and approval obtained before drilling or recompletion begins. If changes in the proposed plan are considered advisable, a copy of this notice showing such changes will be returned to the sender. Submit this notice in QUINTUPLICATE. One copy will be returned following approval. See additional instructions in Rules and Regulations of the Commission. If State Land submit 6 Copies Attach Form C- 128 in triplicate to first 3 copies of form C-101

Midland, Texas

(Place)

August 11, 1964

(Date)

OIL CONSERVATION COMMISSION
SANTA FE, NEW MEXICO

Gentlemen:

You are hereby notified that it is our intention to commence the Drilling of a well to be known as

Curtis R. Inman

(Company, or Operator)

Humble State

(Lease)

Well No. 1, in K (Unit) The well is

located 2310' feet from the South line and 2310 feet from the

West line of Section 25, T20 South, R. 27 East, NMPM.

(GIVE LOCATION FROM SECTION LINE) Wildcat Pool, Eddy County

If State Land the Oil and Gas Lease is No. OG-273

If patented land the owner is

Address P. O. Box 737, Midland, Texas

We propose to drill well with drilling equipment as follows: cable tools to approximately 850 feet.

The status of plugging bond is in force

Drilling Contractor Apache Drilling Company

We intend to complete this well in the seven-rivers formation at an approximate depth of 850 feet.

CASING PROGRAM

We propose to use the following strings of Casing and to cement them as indicated:

Size of Hole	Size of Casing	Weight per Foot	New or Second Hand	Depth	Sacks Cement
10-1/2	8-5/8	24#	second hand	350-450	150-200
8	4-1/2	9.5#	second hand	T.D.	50-75

If changes in the above plans become advisable we will notify you immediately.

ADDITIONAL INFORMATION (If recompletion give full details of proposed plan of work.)

AUG 14 1964

Approved _____, 19____
Except as follows:

Sincerely yours,

Curtis R. Inman
(Company or Operator)

By Curtis R. Inman

Position Operator

Send Communications regarding well to

Name Curtis R. Inman

Address P. O. Box 737, Midland, Texas

OIL CONSERVATION COMMISSION

By M. L. Armstrong
OIL AND GAS INSPECTOR

FAMILY OF COPIES RECEIVED	
DISTRIBUTION	
SANTA FE	
FILE	
U.S.G.S.	
LAND OFFICE	
TRANSPORTER	OIL
	GAS
PRODUCTION OFFICE	
OPERATOR	

NEW MEXICO OIL CONSERVATION COMMISSION
WELL LOCATION AND ACREAGE DEDICATION PLAT
 SEE INSTRUCTIONS FOR COMPLETING THIS FORM ON THE REVERSE SIDE

FORM C-128
Revised 5/1/57

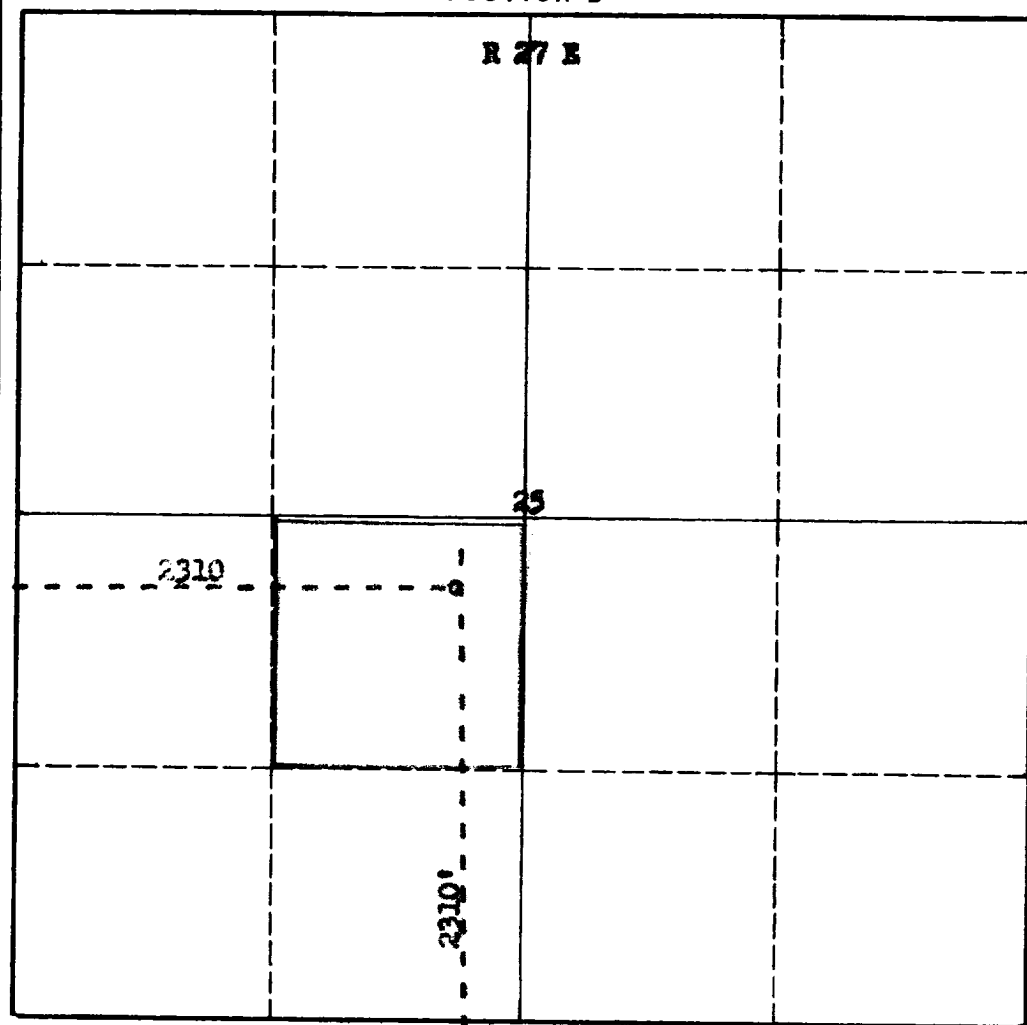
RECEIVED
AUG 13 1964

SECTION A			
Operator Curtis Inman,		Lease Humble State	
Unit Letter K	Section 25	Township 20 South	Range 27 East
		County Rddy	
Actual Footage Location of Well: 2310 feet from the South line and 2310 feet from the West line			
Ground Level Elev. 3310	Producing Formation Seven-Rivers	Pool Wildcat	Dedicated Acreage: 40 Acres

1. Is the Operator the only owner in the dedicated acreage outlined on the plat below? YES ☒ NO ____ . ("Owner" means the person who has the right to drill into and to produce from any pool and to appropriate the production either for himself or for himself and another. (65-3-29 (e) NMSA 1935 Comp.)
2. If the answer to question one is "no," have the interests of all the owners been consolidated by communitization agreement or otherwise? YES ____ NO ____ . If answer is "yes," Type of Consolidation ____
3. If the answer to question two is "no," list all the owners and their respective interests below:

Owner	Land Description

SECTION B



CERTIFICATION

I hereby certify that the information in SECTION A above is true and complete to the best of my knowledge and belief.

Name Curtis R. Inman
 (Curtis R. Inman)

Operator
Position

Company

Date
August 10, 1964

I hereby certify that the well location shown on the plat in SECTION B was plotted from field notes of actual surveys made by me or under my supervision, and that the same is true and correct to the best of my knowledge and belief.

Date Surveyed
June 29, 1964
 Registered Professional Engineer
 and/or Land Surveyor

James H. Buren
 Certificate No. **H.M.L.S. No. 542**

T
20
S

INSTRUCTIONS FOR COMPLETION OF FORM C-128

1. Operator shall furnish and certify to the information called for in Section A.
2. Operator shall outline the dedicated acreage for *both* oil and gas wells on the plat in Section B.
3. A registered professional engineer or land surveyor registered in the State of New Mexico or approved by the Commission shall show on the plat the location of the well and certify this information in the space provided.
4. All distances shown on the plat must be from the outer boundaries of the Section.
5. If additional space is needed for listing owners and their respective interests as required in question 3 of Section A, please use space below.