

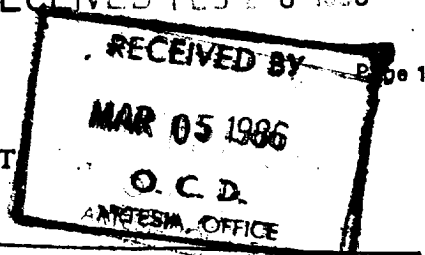
STATE OF NEW MEXICO
ENERGY and MINERALS DEPARTMENT

OIL CONSERVATION DIVISION

RECEIVED FEB 28 1986

This form is not to
be used for reporting
packer leakage tests
in Northwest New Mexico

SOUTHEAST NEW MEXICO PACKER LEAKAGE TEST



Operator		MONSANTO COMPANY		Lease		LOWE STATE		Well No.
LOCATION OF WELL	Unit	Sec.	Twp.	Rge.	County			
	F	36	21S	23E	EDDY			
NAME OF RESERVOIR OR POOL			TYPE OF PROD. (Oil or Gas)	METHOD OF PROD. FLOW, ART LIFT	PROD. MEDIUM (Tbg or Cag)		CHOKE SIZE	
Upper Compl.	Indian Basin Upper Penn			GAS	FLOW	TBG	-	
Lower Compl.	Indian Basin Morrow			GAS	FLOW	TBG	-	

FLOW TEST NO. 1

Both zones shut-in at (hour, date): 0930 HOURS 2-19-86

Well opened at (hour, date): 1000 HRS 2-20-86

Indicate by (X) the zone producing	Upper Completion BLUE X	Lower Completion RED
Pressure at beginning of test	1387	1676
Stabilized? (Yes or No)	YES	YES
Maximum pressure during test	1387	1676
Minimum pressure during test	100	1635
Pressure at conclusion of test	100	1635
Pressure change during test (Maximum minus Minimum)	1287	41
Was pressure change an increase or a decrease?	DECREASED	DECREASED
Well closed at (hour, date): 1030 HOURS 2-20-86	Total Time On Production 1 1/2 HR	
Oil Production During Test: _____ bbls; Grav. _____	Gas Production During Test: _____ MCF; GOR _____	
Remarks: FLOWED UPPEEN ZONE TO AIR UNTILL STARTED PRODUCING FLUID SHUT IN		

(Continue on reverse side)

FLOW TEST NO. 2

Well opened at (hour, date):	0945 HOURS (CASING) 2-21-86	Upper Completion	Lower Completion
Indicate by (X) the zone producing		1364	1625
Pressure at beginning of test		X	X
Stabilized? (Yes or No)		YES	YES
Maximum pressure during test		1364	1625
Minimum pressure during test		1150	1400
Pressure at conclusion of test		1364	1625
Pressure change during test (Maximum minus Minimum)		214	225
Was pressure change an increase or a decrease?		DECREASED	DECREASED
Well closed at (hour, date):	1015 HRS 2-21-86	Total Time On Production	1/2 HR
Oil Production During Test:	_____ bbls; Grav. _____	Gas Production During Test	_____ MCF; GOR _____
Remarks:	FLOWED CASING FROM 1364 TO 25 LBS (UNABLE TO FLOW LOWER ZONE DUE TO FLUID)		

I hereby certify that the information herein contained is true and complete to the best of my knowledge.

Approved _____ 19 _____
New Mexico Oil Conservation Division

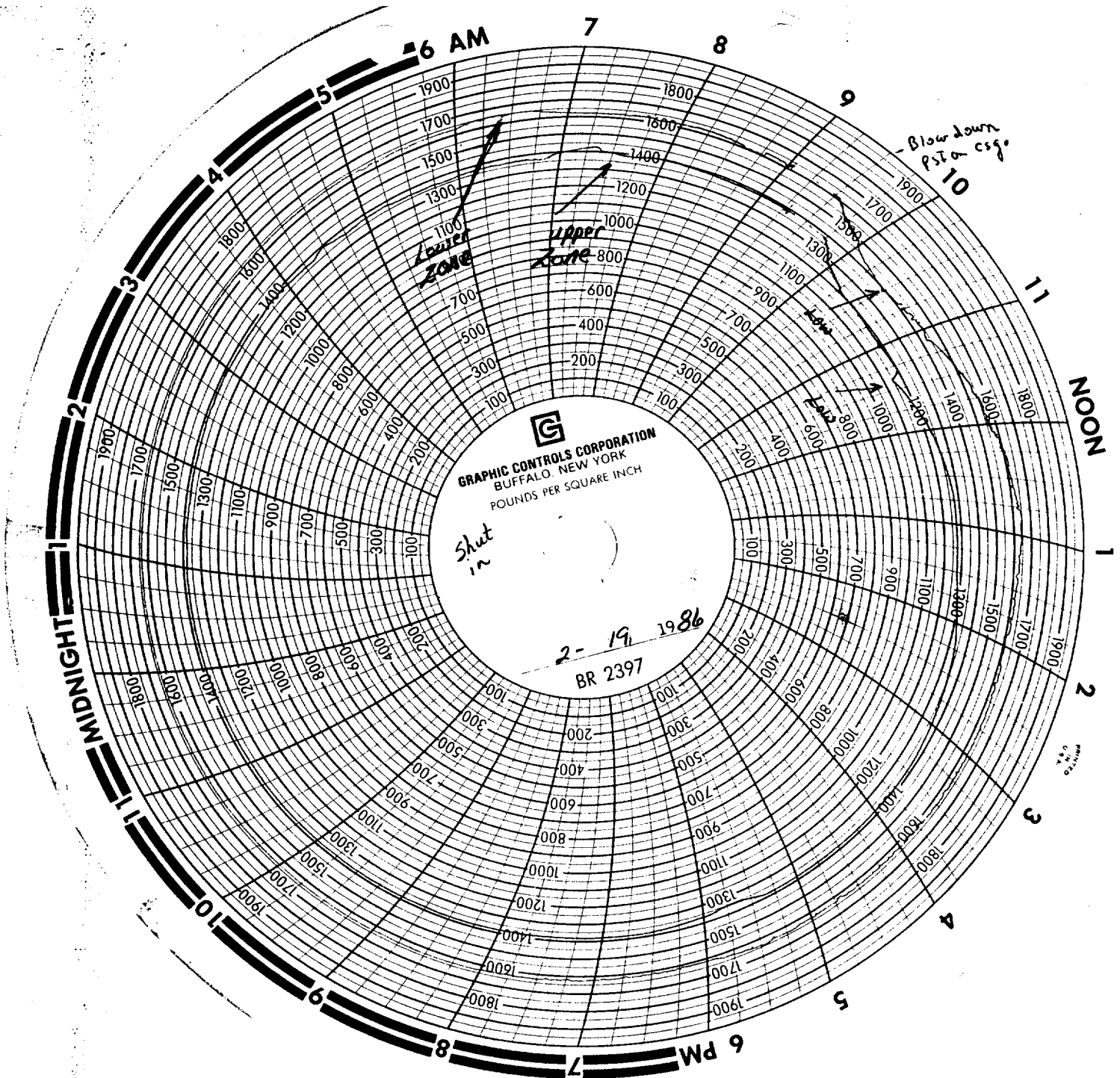
By _____
Title _____

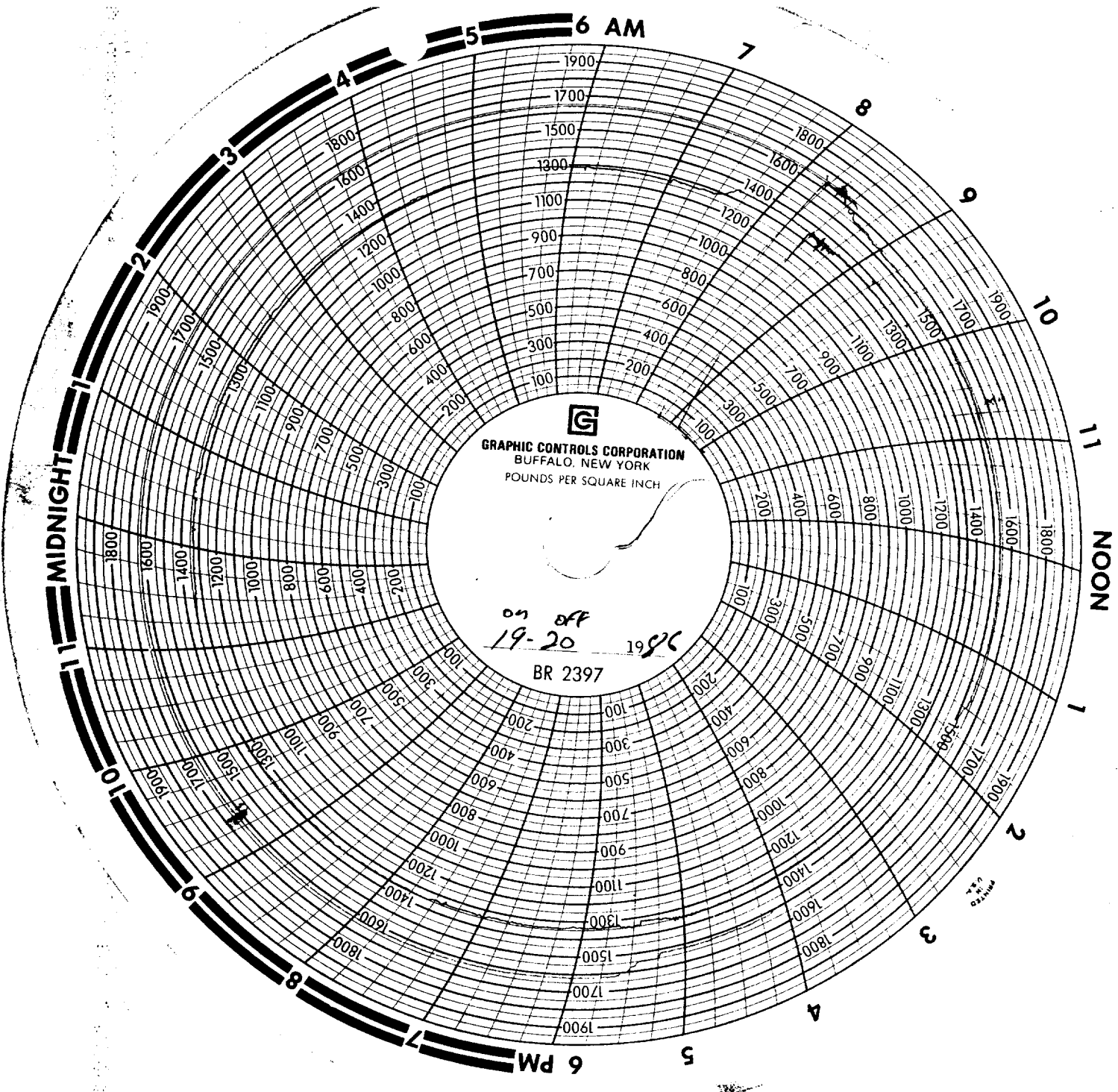
Operator _____ Monsanto Oil Company
By _____
Title _____ Regional Production Manager
Date _____ March 4, 1986

SOUTHEAST NEW MEXICO PACKER LEAKAGE TEST INSTRUCTIONS

1. A packer leakage test shall be commenced on each multiply completed well within seven days after actual completion of the well, and annually thereafter as prescribed by the order authorizing the multiple completion. Such tests shall also be commenced on all multiple completions within seven days following recompletion and/or chemical or fracture treatment, and whenever remedial work has been done on a well during which the packer or the tubing have been disturbed. Tests shall also be taken at any time that communication is suspected or when requested by the Division.
2. At least 72 hours prior to the commencement of any packer leakage test, the operator shall notify the Division in writing of the exact time the test is to be commenced. Offset operations shall also be so notified.
3. The packer leakage test shall commence when both zones of the dual completion are shut-in for pressure stabilization. Both zones shall remain shut-in until the well-head pressure in each has stabilized and for a minimum of two hours thereafter, provided however, that they need not remain shut-in more than 24 hours.
4. For Flow Test No. 1, one zone of the dual completion shall be produced at the normal rate of production while the other zone remains shut-in. Such test shall be continued until the flowing wellhead pressure has become stabilized and for a minimum of two hours thereafter, provided however, that the flow test need not continue for more than 24 hours.

5. Following completion of Flow Test No. 1, the well shall again be shut-in, in accordance with Paragraph 3 above.
6. Flow Test No. 2 shall be conducted even though no leak was indicated during Flow Test No. 1. Procedure for Flow Test No. 2 is to be the same as for Flow Test No. 1 except that the previously produced zone shall remain shut-in while the previously shut-in zone is produced.
7. All pressures, throughout the entire test, shall be continuously measured and recorded with recording pressure gauges, the accuracy of which must be checked with deadweight tester at least twice, once at the beginning and once at the end, of each flow test.
8. The results of the above-described tests shall be filed in triplicate within 15 days after completion of the test. Tests shall be filed with the appropriate District Office of the New Mexico Oil Conservation Division on Southeast New Mexico Packer Leakage Test Form Revised 11-01-58, together with the original pressure recording gauge charts with all the deadweight pressures which were taken indicated thereon. In lieu of filing the aforesaid charts, the operator may construct a pressure versus time curve for each zone of each test, indicating thereon all pressure changes which may be reflected by the gauge charts as well as all deadweight pressure readings which were taken. If the pressure curve is submitted, the original chart must be permanently filed in the operator's office. Form C-116 shall also accompany the Packer Leakage Test Form when the test period coincides with a gas-oil ratio test period.





GRAPHIC CONTROLS CORPORATION
BUFFALO, NEW YORK
POUNDS PER SQUARE INCH

on off
19-20 1986
BR 2397

MADE IN U.S.A.

