



UNITED STATES
DEPARTMENT OF THE INTERIOR
GEOLOGICAL SURVEY
P. O. Drawer U
Artesia, New Mexico 88210

October 26, 1964

Mr. A. L. Porter, Jr.
New Mexico Oil Conservation Commission
P. O. Box 871
Santa Fe, New Mexico

Re: Oil-Potash Area

Dear Mr. Porter:

Attached is an "information copy" of a Notice of Intention to Drill a well to a depth of 2,200 feet to test the Yates formation in the SW $\frac{1}{4}$ SE $\frac{1}{4}$ sec. 1, T. 20 S., R. 30 E., N.M.P.M., Eddy County, New Mexico, filed by John H. Trigg, P. O. Box 520, Roswell, New Mexico. The location is on Federal oil and gas lease New Mexico 04535.

Sincerely yours,

(Sgd. J. A. Knauf)

James A. Knauf
District Engineer

Attachment

cc w/notice to:
NMOCC, Artesia
USGS, Roswell
USGS, Carlsbad

RECEIVED

OCT 27 1964

D. C. C.
ARTESIA, OFFICE

UNITED STATES
DEPARTMENT OF THE INTERIOR
GEOLOGICAL SURVEY

APPLICATION FOR PERMIT TO DRILL, DEEPEN, OR PLUG BACK

1a. TYPE OF WORK

DRILL ☒DEEPEN ☐PLUG BACK ☐

b. TYPE OF WELL

OIL
WELL ☒GAS
WELL ☐

OTHER

SINGLE
ZONE ☐MULTIPLE
ZONE ☐

2. NAME OF OPERATOR

John H. Trigg

3. ADDRESS OF OPERATOR

P. O. Box 520, Roswell, New Mexico, 88201

4. LOCATION OF WELL (Report location clearly and in accordance with any State requirements.)*

At surface

660 Feet From South Line & 1980 Feet From East Line

At proposed prod. zone

Same

14. DISTANCE IN MILES AND DIRECTION FROM NEAREST TOWN OR POST OFFICE*

15. DISTANCE FROM PROPOSED*
LOCATION TO NEAREST
PROPERTY OR LEASE LINE, FT.
(Also to nearest drlg. line, if any)

660' FSL

16. NO. OF ACRES IN LEASE

1080.00

17. NO. OF ACRES ASSIGNED
TO THIS WELL

40.00

18. DISTANCE FROM PROPOSED LOCATION*
TO NEAREST WELL, DRILLING, COMPLETED,
OR APPLIED FOR, ON THIS LEASE, FT.

19. PROPOSED DEPTH

2200'

20. ROTARY OR CABLE TOOLS

Cable Tools

21. ELEVATIONS (Show whether DF, RT, GR, etc.)

22. APPROX. DATE WORK WILL START*

October 25, 1964

23.

PROPOSED CASING AND CEMENTING PROGRAM

SIZE OF HOLE	SIZE OF CASING	WEIGHT PER FOOT	SETTING DEPTH	QUANTITY OF CEMENT
12 1/2"	8 5/8"	24#, J-55	625 Ft.	400 Sacks or Suff. to Circ.
8"	7"	20#, J-55	1875 Ft.	50 Sacks
6"	5 1/2"	14#, J-55	2200 Ft.	Sufficient to Circulate

See Attached Sheet For Cementing Program.

RECEIVED

OCT 27 1964

O. C. C.
ARTESIAL OFFICE

IN ABOVE SPACE DESCRIBE PROPOSED PROGRAM: If proposal is to deepen or plug back, give data on present productive zone and proposed new productive zone. If proposal is to drill or deepen directionally, give pertinent data on subsurface locations and measured and true vertical depths. Give blowout preventer program, if any.

24.

SIGNED

APPROVED BY JOHN H. TRIGG

TITLE

Owner

DATE

October 19, 1964

(This space for Federal or State office use)

PERMIT NO.

APPROVAL DATE

APPROVED BY

TITLE

DATE

CONDITIONS OF APPROVAL, IF ANY:

*See Instructions On Reverse Side

Instructions

General: This form is designed for submitting proposals to perform certain well operations, as indicated, on all types of lands and leases for appropriate action by either a Federal or a State agency, or both, pursuant to applicable Federal and/or State laws and regulations. Any necessary special instructions concerning the use of this form and the number of copies to be submitted, particularly with regard to local, area, or regional procedures and practices, either are shown below or will be issued by, or may be obtained from, the local Federal and/or State office.

Item 1: If the proposal is to redrill to the same reservoir at a different subsurface location or to a new reservoir, use this form with appropriate notations. Consult applicable State or Federal regulations concerning subsequent work proposals or reports on the well.

Item 4: If there are no applicable State requirements, locations on Federal or Indian land should be described in accordance with Federal requirements. Consult local State or Federal office for specific instructions.

Item 14: Needed only when location of well cannot readily be found by road from the land or lease description. A plat, or plats, separate or on this reverse side, showing the roads to, and the surveyed location of, the well, and any other required information, should be furnished when required by Federal or State agency offices.

Items 15 and 18: If well is to be, or has been directionally drilled, give distances for subsurface location of hole in any present or objective production zone.

Item 22: Consult applicable Federal or State regulations, or appropriate officials, concerning approval of the proposal before operations are started.

Federal "PA" No. 1-1
New Mexico 04535
Sec. 1, T20S., R30E.
Eddy County, New Mexico

CEMENTING PROGRAM

I propose drilling a well to approximately 2200 feet or to sufficient depth to test the productive interval in the Yates formation in wells to the north. A 12 1/2 inch hole will be drilled to approximately 625 feet or sufficient depth to penetrate the massive salt section.

Eight and five-eighths inch, 24#, J-55 casing will be run to this depth and cemented with approximately 400 sacks cement with 8% salt and 2% Calcium Chloride.

An 8 inch hole will be drilled to approximately 1875 feet and 7 inch, 20#, J-55 casing will be run to this depth and cemented with 50 sacks.

A 6 inch hole will be drilled to approximately 2200 feet. If the Yates zone is productive a Cal seal plug will be set above the pay zone and the 7 inch casing will be cut and pulled. Then a 5 1/2 inch, 14#, J-55 production string will be run to total depth and cemented with a sufficient amount to circulate.

All cementing will be in accordance with U.S.G.S. regulations.

RECEIVED

OCT 27 1964

O. C. C.
ARTESIAL OFFICE

NEW MEXICO OIL CONSERVATION COMMISSION

WELL LOCATION AND ACREAGE DEDICATION PLAT

FORM C-128
Revised 3/1/57

SEE INSTRUCTIONS FOR COMPLETING THIS FORM ON THE REVERSE SIDE

SECTION A

Operator JOHN H. TRIGG			Lease FED. PA		Well No. 1-1
Unit Letter O	Section 1	Township 20 SOUTH	Range 30 EAST	County EDDY	
Actual Footage Location of Well: 660 feet from the SOUTH line and 1980 feet from the EAST line					
Ground Level Elev.	Producing Formation <i>yvette</i>		Pool Undesignated	Dedicated Acreage 40.00 Acres	

1. Is the Operator the only owner in the dedicated acreage outlined on the plat below? YES ☒ NO ☐ ("Owner" means the person who has the right to drill into and to produce from any pool and to appropriate the production either for himself or for himself and another. (65-3-29 (e) NMSA 1935 Comp.)
2. If the answer to question one is "no," have the interests of all the owners been consolidated by communitization agreement or otherwise? YES ☐ NO ☐ If answer is "yes," Type of Consolidation _____
3. If the answer to question two is "no," list all the owners and their respective interests below:

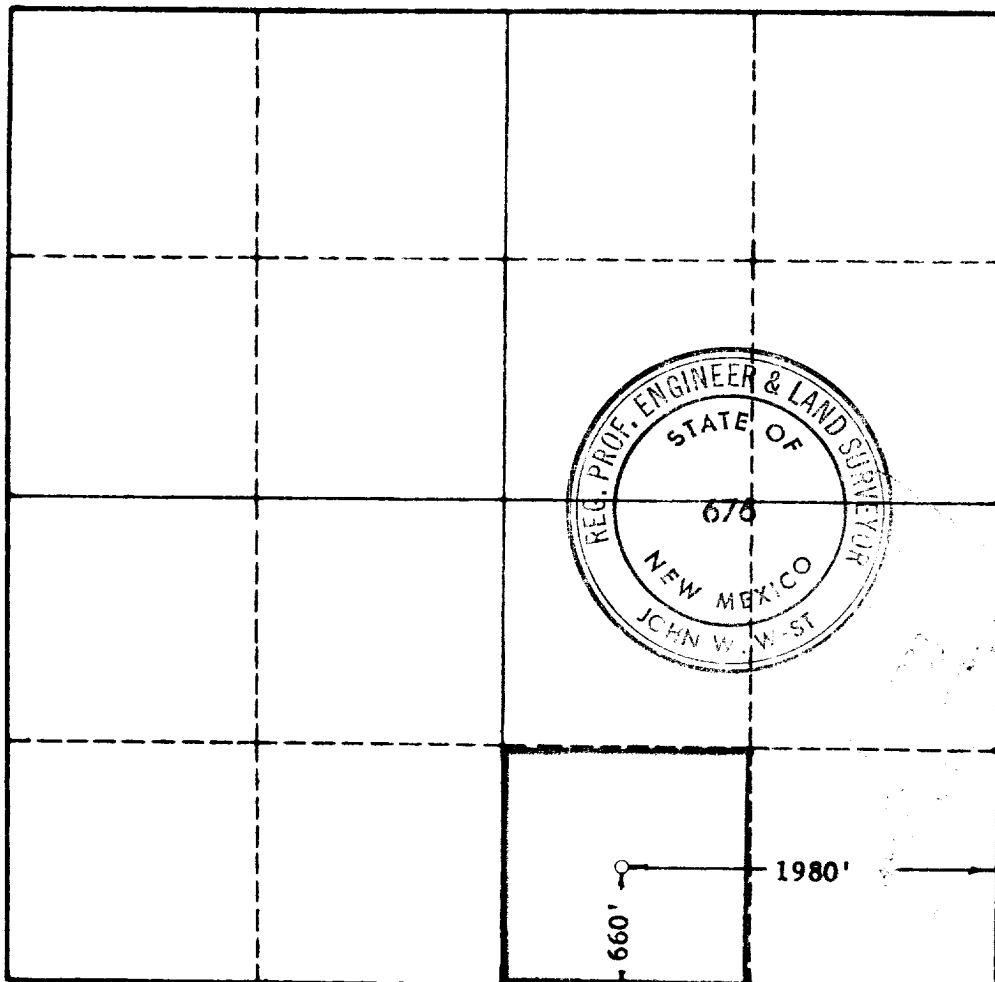
RECEIVED

Owner	Land Description
	OCT 27 1964

D. C. C.

**ARTESIA, OFFICE
CERTIFICATION**

SECTION B



I hereby certify that the information in SECTION A above is true and complete to the best of my knowledge and belief.

Name <i>John H. Trigg</i>
Position Owner
Company John H. Trigg
Date October 21, 1964

I hereby certify that the well location shown on the plat in SECTION B was plotted from field notes of actual surveys made by me or under my supervision, and that the same is true and correct to the best of my knowledge and belief.

Date Surveyed OCTOBER 20, 1964
Registered Professional Engineer and/or Land Surveyor, JOHN W. WEST
<i>John W. West</i>
Certificate No. N.M. - P.E. & L.S. NO. 676

0 330 660 990 1320 1660 1980 2310 2640 2000 1500 1000 500 0