

NEW MEXICO OIL CONSERVATION COMMISSION
WELL LOCATION AND ACREAGE DEDICATION PLAT

Copy to
J. J.

Form C-102
Supersedes C-128
Effective 1-1-65

All distances must be from the outer boundaries of the Section.

Operator THE ATLANTIC REFINING COMPANY			Lease SMITH 28 11 09 AM '65		Well No. 1
Unit Letter G	Section 1	Township 22 South	Range 23 East	County Eddy	
Actual Footage Location of Well: 1930 feet from the North line and 2080 feet from the East line					
Ground Level Elev.	Producing Formation Indian Basin Upper Penn.		Pool Indian Basin		Dedicated Acreage: 673.32 Acres

1. Outline the acreage dedicated to the subject well by colored pencil or hachure marks on the plat below.
2. If more than one lease is dedicated to the well, outline each and identify the ownership thereof (both as to working interest and royalty).
3. If more than one lease of different ownership is dedicated to the well, have the interests of all leases been consolidated by communitization, unitization, force-pooling, etc?

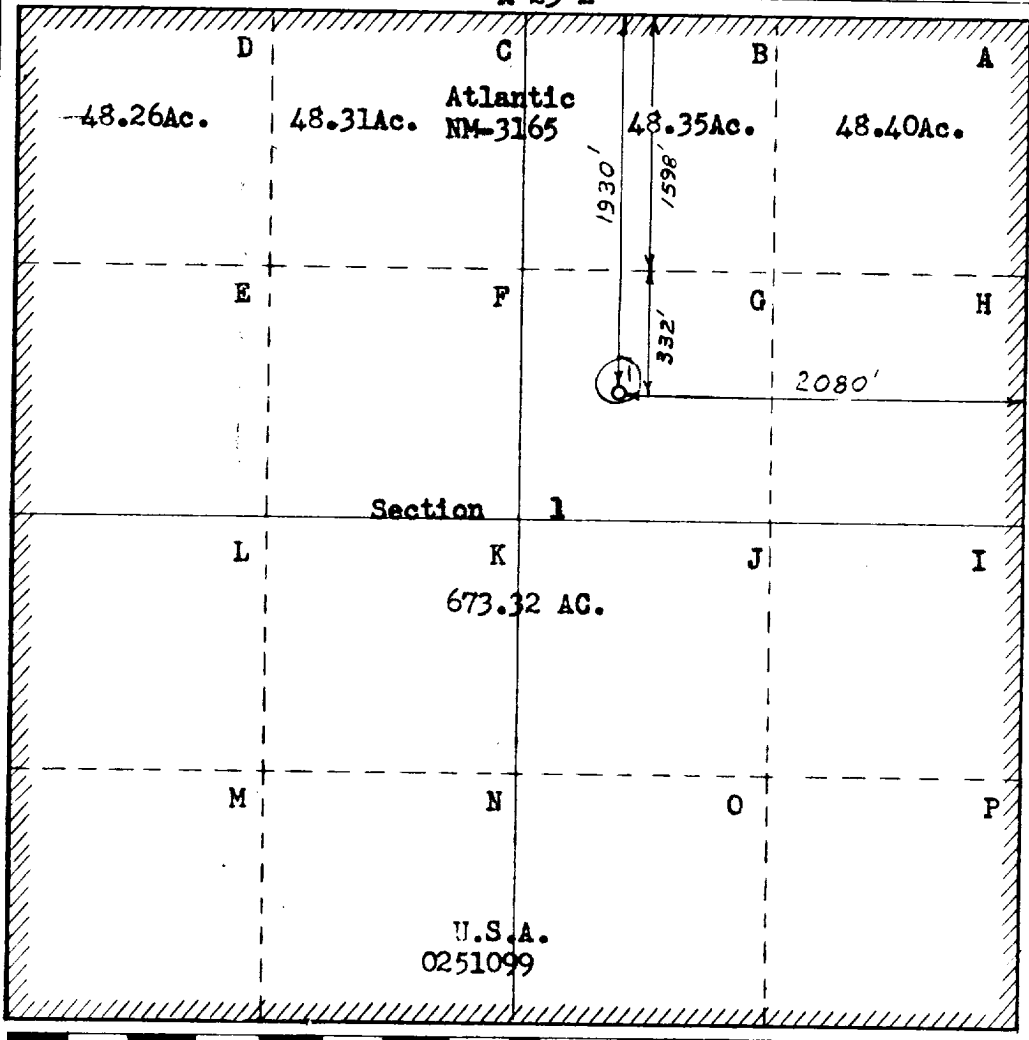
RECEIVED

☐ Yes ☐ No If answer is "yes," type of consolidation UNIT 2 1 1965

If answer is "no," list the owners and tract descriptions which have actually been consolidated. (Use reverse side of this form if necessary.)

No allowable will be assigned to the well until all interests have been consolidated (by communitization, unitization, forced-pooling, or otherwise) or until a non-standard unit, eliminating such interests, has been approved by the Commission.

R 23 E



CERTIFICATION

I hereby certify that the information contained herein is true and complete to the best of my knowledge and belief.

Name <i>Clinton P. Hamel, Jr.</i>
Position Staff Landman
Company The Atlantic Refining Co.
Date July 15, 1965

I hereby certify that the well location shown on this plat was plotted from field notes of actual surveys made by me or under my supervision, and that the same is true and correct to the best of my knowledge and belief.

Date Surveyed July 13, 1965
R. A. Waterhouse, Surveyor The Atlantic Refining Company
<i>[Signature]</i>

PAIO-1419

T
22
S