

NEW MEXICO OIL CONSERVATION COMMISSION
 WI LOCATION AND ACREAGE DEDICATION PLAT AMENDED

Form C-102
 Supersedes C-128
 Effective 1-1-65

All distances must be from the outer boundaries of the Section.

Operator Atlantic Richfield Company			Lease Pure Federal		Well No. 1
Unit Letter K	Section 11	Township 21-S	Range 25-E	County Eddy	
Actual Footage Location of Well: 2078 feet from the South line and 1892 feet from the West line					
Ground Level Elev: 3318'	Producing Formation Morrow (Penn)		Pool Catclaw Draw		Dedicated Acreage: 340.94 Acres

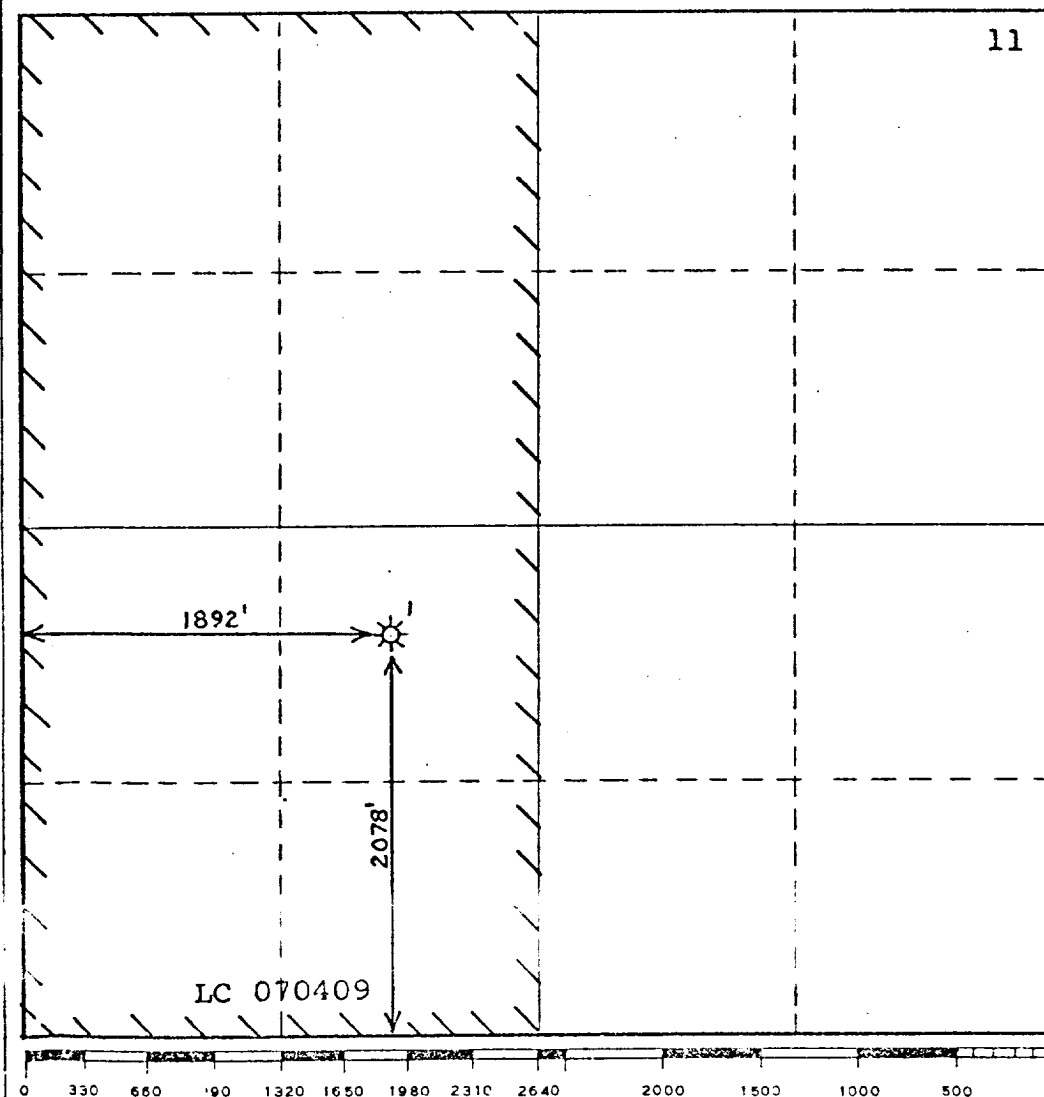
1. Outline the acreage dedicated to the subject well by colored pencil or hatchure marks on the plat below.
2. If more than one lease is dedicated to the well, outline each and identify the ownership thereof (both as to working interest and royalty).
3. If more than one lease of different ownership is dedicated to the well, have the interests of all owners been consolidated by communitization, unitization, force-pooling, etc?

☐ Yes ☐ No If answer is "yes," type of consolidation _____

If answer is "no," list the owners and tract descriptions which have actually been consolidated. (Use reverse side of this form if necessary.) _____

No allowable will be assigned to the well until all interests have been consolidated (by communitization, unitization, forced-pooling, or otherwise) or until a non-standard unit, eliminating such interests, has been approved by the Commission.

R-25E



CERTIFICATION

I hereby certify that the information contained herein is true and complete to the best of my knowledge and belief.

O. D. Bretches

Name
O. D. Bretches

Position
Dist. Drlg. Supervisor

Company
Atlantic Richfield Co.

Date
March 6, 1973

I hereby certify that the well location shown on this plat was plotted from field notes of actual surveys made by me or under my supervision, and that the same is true and correct to the best of my knowledge and belief.

Date Surveyed _____

 District Engineer
 and or Land Surveyor

Certificate No. _____

F 11 S