



IN REPLY REFER TO:

UNITED STATES
DEPARTMENT OF THE INTERIOR
GEOLOGICAL SURVEY

Drawer 1857
Roswell, New Mexico 88401

Copy to J-1

August 23, 1966

Pan American Petroleum Corporation
Post Office Box 68
Robbs, New Mexico 88440

Attention:

Your Notice of Intention to Drill well No. 19-31, Eddy Salt in the ~~121st~~ sec. 19, T. 20 S., R. 31 E., S. 1. E. 4., Eddy County, New Mexico, lease Las Cruces 070220, to a depth of 11,900 feet to test the Strawn formation in the Potash Area, is hereby approved. It is noted that this location is 324 feet south of your original location which was approved by this office on April 11, 1966.

One copy of the Notice is returned herewith. Please notify the District Engineer, Geological Survey, P. O. Drawer U, Artesia, New Mexico in sufficient time for a representative to witness all cementing operations.

Sincerely yours,

FILED

AUG 28 1966

(ORIG. SGN) BILLY J. SHOGER

FILED
AUG 28 1966

BILLY J. SHOGER
Acting Oil and Gas Supervisor

Attachment

cc:
Washington
Mining Branch (2)
NMOCC-Artesia (2) (w/2 cys Notice) ✓
Artesia
Roswell (2)

JAKnauf:ih 8/18/66

Form 9-331 C
May 1965

N. M. O. C. C. COPY

SUBMIT IN TRIP DATE

Form approved.
Budget Bureau No. 42-R1425.

UNITED STATES
DEPARTMENT OF THE INTERIOR
GEOLOGICAL SURVEY

Other instruct. on reverse side

copy 1/3

APPLICATION FOR PERMIT TO DRILL, DEEPEN, OR PLUG BACK

1. TYPE OF WORK
DRILL ☒ DEEPEN ☐ PLUG BACK ☐

2. TYPE OF WELL
OIL WELL ☒ GAS WELL ☐ OTHER ☐ SINGLE ZONE ☒ MULTIPLE ZONE ☐

3. NAME OF OPERATOR
PAN AMERICAN PETROLEUM CORPORATION

4. ADDRESS OF OPERATOR
Box 68, Hobbs, N.M. 88240

5. LOCATION OF WELL (Report location clearly and in accordance with any State requirements.)
At surface
1656.49 FSL x 1972.46 FWL, Sec. 19 (Unit K, NE 1/4 SW 1/4)

6. DISTANCE IN MILES AND DIRECTION FROM NEAREST TOWN OR POST OFFICE*

5. LEASE DESIGNATION AND SERIAL NO.
LC-070220

6. IF INDIAN, ALLOTTEE OR TRIBE NAME

7. UNIT AGREEMENT NAME
BIG EDDY UNIT FEDERAL

8. FARM OR LEASE NAME

9. WELL NO.
10

10. FIELD AND POOL, OR WILDCAT
BIG EDDY STRAWN

11. SEC., T., R., M., OR BLK. AND SURVEY OR AREA
19-20-31 NMMPM

12. COUNTY OR PARISH
EDDY

13. STATE
N.M.

14. DISTANCE FROM PROPOSED* LOCATION TO NEAREST PROPERTY OR LEASE LINE, FT. (Also to nearest drlg. unit line, if any)

15. DISTANCE FROM PROPOSED LOCATION* TO NEAREST WELL, DRILLING, COMPLETED, OR APPLIED FOR, ON THIS LEASE, FT.

16. NO. OF ACRES IN LEASE

17. NO. OF ACRES ASSIGNED TO THIS WELL
160

18. PROPOSED DEPTH
11900'

19. ROTARY OR CABLE TOOLS
ROTARY

20. APPROX. DATE WORK WILL START*
8-24-66

PROPOSED CASING AND CEMENTING PROGRAM				
SIZE OF HOLE	SIZE OF CASING	WEIGHT PER FOOT	SETTING DEPTH	QUANTITY OF CEMENT
20"	16"	65#	850'	CIRCULATE
13 3/4"	11 3/4"	42-47#	2250'	"
10 3/4"	8 5/8"	24-32#	3900'	"
7 1/8"	5 1/2"	15.5-20#	11900'	FILL 600' ABOVE STRAWN

After drilling well, logs will be run and evaluations made, perforating and/or stimulating as necessary in attempting commercial production.

RECEIVED
AUG 18 1966
U.S. GEOLOGICAL SURVEY
ARTESIA, NEW MEXICO

To be drilled in accordance w/ NMOC Rule 11.8-12.8

IN ABOVE SPACE DESCRIBE PROPOSED PROGRAM: If proposal is to deepen or plug back, give data on present productive zone and proposed new productive zone. If proposal is to drill or deepen directionally, give pertinent data on subsurface locations and measured and true vertical depths. Give blowout prevention program, if any.

24. SIGNED _____ TITLE Area Supt. DATE 8-17-66

PERMIT NO. _____ APPROVAL DATE _____

APPROVED BY _____ TITLE _____ DATE _____

CONDITIONS OF APPROVAL, IF ANY:

OK - USGS - A
1 - STOP
1 - STATE LAND
1 - PENNY N. BASS
1 - VS CORAX

*See Instructions On Reverse Side

RECEIVED
AUG 25 1966
U. S. GEOLOGICAL SURVEY
ROSWELL, NEW MEXICO

**MEXICO OIL CONSERVATION COMMISSION
WELL LOCATION AND ACREAGE DEDICATION PLAT**

Form 1-60
Supersedes O-126
1-15-60

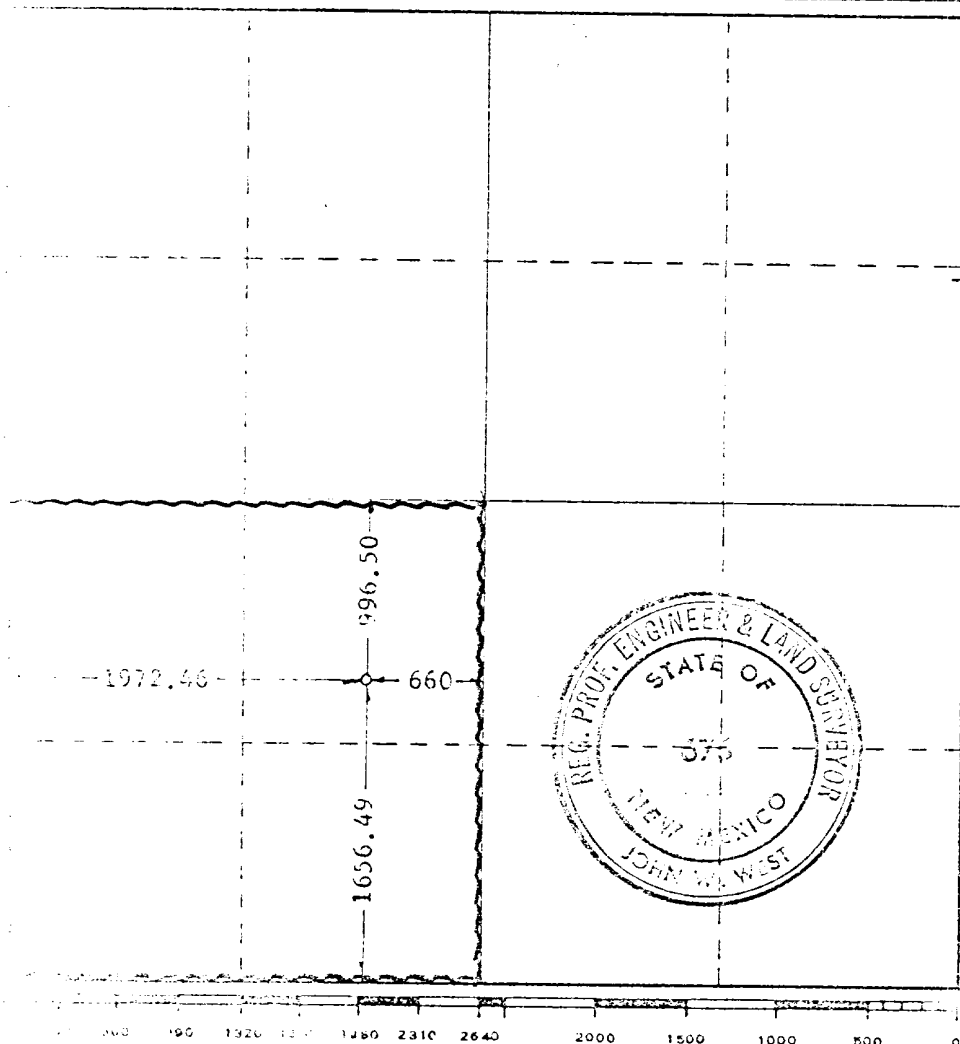
All distances must be from the outer boundaries of the section.

PAN AMERICAN PETROLEUM CORPORATION			Lease: BIG EDDY UNIT <i>Federal</i>		Well No. 10
Section 8	Township 19	Range 20 SOUTH	County EDDY		
Section 8, Township 19 South, Range 20 East, Eddy County, New Mexico Section 8, Township 19 South, Range 20 East, Eddy County, New Mexico					
Distance from the WEST line and		Distance from the SOUTH line			
172.42		1656.49			
Section 8, Township 19 South, Range 20 East, Eddy County, New Mexico		Section 8, Township 19 South, Range 20 East, Eddy County, New Mexico			
STRAWN		BIG EDDY and STRAWN		160	

1. Outline the acreage dedicated to the subject well by colored pencil or hatchure marks on the plat below.
2. If more than one lease is dedicated to the well, outline each and identify the ownership thereof (both as to working interest and royalty).
3. If more than one lease of different ownership is dedicated to the well, have the interests of all owners been consolidated by communitization, unitization, force-pooling, etc?
- RECEIVED**
AUG 26 1966
- ☒ Yes ☐ No If answer is "yes," type of consolidation _____

If answer is "no," list the owners and tract descriptions which have actually been consolidated (use reverse side of this form if necessary.) _____

No allowance will be assigned to the well until all interests have been consolidated (by communitization, unitization, force-pooling, or otherwise) or until a non-standard unit, eliminating such interests, has been approved by the Commission.



CERTIFICATION	
I hereby certify that the information contained herein is true and complete to the best of my knowledge and belief.	
Name _____	
Title _____	
AREA Supt.	
Company _____	
PAN AMERICAN PETROLEUM CORPORATION	
Date _____	
8-17-66	
I hereby certify that the well location shown on this plat was plotted from field notes of actual surveys made by me or under my supervision, and that the same is true and correct to the best of my knowledge and belief.	
Date Surveyed _____	
8-17-66	
Registered Professional Engineer and/or Land Surveyor	
<i>John W. West</i>	
Certificate No. _____	
676	

August 17, 1966

RECEIVED

AUG 26 1966

O. C. C.
ARTESIA, OFFICE

RECEIVED	
PAN AMERICAN	
PETROLEUM CORP.	
AUG 22 1966	
HOBBS, N. M.	
AS	1
AC	
AE	
AFI	
A72	
AAC	
FILE	

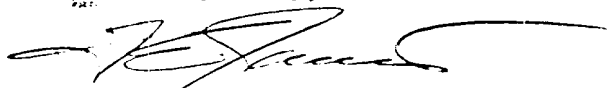
Mr. V. E. Staley
Pan American Petroleum Corporation
Post Office Box 68
Hobbs, New Mexico

Dear Sir:

This will acknowledge receipt of your "Notice of Intention to Drill" the Big Eddy Unit Well No. 10 at your revised location, 1972 feet from the West line and 1656 feet from the South line, Section 19, Township 20 South, Range 31 East, Eddy County, New Mexico.

As holder of the potash leases within one mile of the proposed well, U. S. Borax and Chemical Corporation has no objection to your drilling this well, provided all operations are in accordance with New Mexico Oil Conservation Commission Order R-1111 A.

Yours very truly,



T. E. Jones
Senior Geologist
U. S. Borax and Chemical Corporation

RECEIVED
AUG 23 1966
U. S. GEOLOGICAL SURVEY
ROSWELL, NEW MEXICO

RECEIVED
AUG 23 1966
U. S. GEOLOGICAL SURVEY
ARTESIA, NEW MEXICO

August 17, 1966

RECEIVED

AUG 26 1966

U. S. G.
ARTESIA OFFICE

RECEIVED	
PAN AMERICAN	
CORP.	
AUG 19 1966	
P. M.	
AS	1
AC	2
AE	2
AFI	
A-2	
AAC	
FILE	

Mr. V. E. Staley
Pan American Petroleum Corporation
Post Office Box 68
Hobbs, New Mexico

Dear Sir:

This will acknowledge receipt of your "Notice of Intention to Drill" the Big Eddy Unit Well No. 10 at your revised location, 1972 feet from the West line and 1656 feet from the South line, Section 19, Township 20 South, Range 31 East, Eddy County, New Mexico.

As holder of the potash leases within one mile of the proposed well, Potash Company of America has no objection to your drilling this well, provided all operations are in accordance with New Mexico Oil Conservation Commission Order R-111 A.

Yours very truly,

J. B. Cummings

J. B. Cummings
Potash Company of America

RECEIVED
AUG 23 1966
U. S. GEOLOGICAL SURVEY
ARTESIA, NEW MEXICO