



UNITED STATES
DEPARTMENT OF THE INTERIOR
GEOLOGICAL SURVEY

Drawer 1857
Roswell, New Mexico 88201

IN REPLY REFER TO:

copy to 2.7.

April 18, 1966

Union Texas Petroleum, a Division of Allied Chemical Corporation
1300 Wilco Building
Midland, Texas

Gentlemen:

Your Notice of Intention to Drill well No. 14 Big Eddy Unit in the NW 1/4 sec. 29, T. 20 S., R. 31 E., N.M.P.M., Eddy County, New Mexico, lease New Mexico 06817, to a depth of 11,600 feet to test the Strawn formation in the Potash Area, is hereby approved.

One copy of the Notice is returned herewith. Please notify the District Engineer, Geological Survey, P. O. Drawer U, Artesia, New Mexico in sufficient time for a representative to witness all cementing operations.

Sincerely yours,

(ORIG. SGD.) JOHN A. ANDERSON

JOHN A. ANDERSON
Regional Oil and Gas Supervisor

Attachment

cc:
Washington
Mining Branch (2)
MOC-~~Artesia~~ (2) (v/2 cys Notice) ✓
Artesia
Roswell (2)

RLBeckman:ih 4/15/66

RECEIVED

APR 19 1966

U. S. G.
ARTESIA OFFICE

UNITED STATES
DEPARTMENT OF THE INTERIOR
GEOLOGICAL SURVEYRECEIVED
(Other instructions on
reverse side)

APR 16 1966

APPLICATION FOR PERMIT TO DRILL, DEEPEN, OR PLUG BACK

1a. TYPE OF WORK DRILL <input checked="" type="checkbox"/> DEEPEN <input type="checkbox"/> PLUG BACK <input type="checkbox"/>		5. LEASE DESIGNATION AND SERIAL NO. NM 06817	
b. TYPE OF WELL OIL WELL <input checked="" type="checkbox"/> GAS WELL <input type="checkbox"/> OTHER <input type="checkbox"/>		6. IF INDIAN, ALLOTTEE OR TRIBE NAME	
2. NAME OF OPERATOR Union Texas Petroleum, a Division of Allied Chemical Corporation		7. UNIT AGREEMENT NAME Big Eddy Unit	
3. ADDRESS OF OPERATOR 1300 Wilco Bldg., Midland, Texas		8. FARM OR LEASE NAME Big Eddy Unit	
4. LOCATION OF WELL (Report location clearly and in accordance with any State requirements.) At surface 660' FNL & 660' FWL At proposed prod. zone		9. WELL NO. 14	
14. DISTANCE IN MILES AND DIRECTION FROM NEAREST TOWN OR POST OFFICE* 23 miles east of Carlsbad, New Mexico		10. FIELD AND POOL, OR WILDCAT Big Eddy Unit	
15. DISTANCE FROM PROPOSED* LOCATION TO NEAREST PROPERTY OR LEASE LINE, FT. (Also to nearest drlg. unit line, if any) 660'		11. SEC., T., R., M., OR BLK. AND SURVEY OR AREA Sec. 29, T-20-S, R-31-E	
16. NO. OF ACRES IN LEASE 640		12. COUNTY OR PARISH Eddy	
17. NO. OF ACRES ASSIGNED TO THIS WELL 40		13. STATE New Mexico	
18. DISTANCE FROM PROPOSED LOCATION* TO NEAREST WELL, DRILLING, COMPLETED, OR APPLIED FOR, ON THIS LEASE, FT. 11,600'		20. ROTARY OR CABLE TOOLS Rotary	
21. ELEVATIONS (Show whether DF, RT, GR, etc.) 3545 DF		22. APPROX. DATE WORK WILL START* April 14, 1966	

23. PROPOSED CASING AND CEMENTING PROGRAM

SIZE OF HOLE	SIZE OF CASING	WEIGHT PER FOOT	SETTING DEPTH	QUANTITY OF CEMENT
20"	16"	65#	850'	900 sacks
13 3/4"	11 3/4"	47#	2200'	800 sacks
10 5/8"	8 5/8"	24# & 32#	4000'	350 sacks 1st stage, 600 sx 2nd stage
7 7/8"	5 1/2"	17# & 20#	T.D.	450 sacks

This casing program is in accordance with the requirements of New Mexico Oil Conservation Commission Order No. R-111-A and amendments for drilling in the Potash Area. Cementing program consists of circulating the surface casing to the bottom of the cellar using 650 sacks of Trinity Lite water w/2% CaCl₂ and 200 sacks Class B w/2% CaCl₂. Salt string will use 600 sacks Class B Posmix 4% gel w/1% CaCl₂ and 24 1/2# salt per sack and 200 sacks Class B w/1% CaCl₂ with 15 1/2# salt per sack (circulated). Intermediate string will use DV-Packer collar set at 2650'. 1st stage - 350 sacks Trinity Lite water w/1# flocele/sack. 2nd stage 600 sacks Trinity Lite water circulate to surface. API Class 5 M-Rd SA blowout prevention program will be used. This is a proposed test of the Strawn formation.

IN ABOVE SPACE DESCRIBE PROPOSED PROGRAM: If proposal is to deepen or plug back, give data on present productive zone and proposed new productive zone. If proposal is to drill or deepen directionally, give pertinent data on subsurface locations and measured and true vertical depths. Give blowout prevention program, if any.

24. SIGNED Rumany TITLE Asst. Dist. Superintendent DATE April 7, 1966

(This space for Federal or State office use)

PERMIT NO. _____ APPROVAL DATE _____

APPROVED BY _____ TITLE _____ DATE _____

CONDITIONS OF APPROVAL, IF ANY: _____

**MEXICO OIL CONSERVATION COMMISSION
WELL LOCATION AND ACREAGE DEDICATION PLAT**

Form C-102
Supersedes C-128
Effective 1-1-65

All distances must be from the outer boundaries of the Section.

Operator UNION TEXAS PETROLEUM CORPORATION			Lease <i>Big Eddy Unit</i> BORAX - FEDERAL		Well No. 14
Unit Letter D	Section 29	Township 20 SOUTH	Range 31 EAST	County EDDY	
Actual Footage Location of Well:					
660 feet from the NORTH line and		660 feet from the WEST line			
Ground Level Elev. 3545 DF	Producing Formation Strawn	Pool <i>Under Strawn</i> Big Eddy Unit		Dedicated Acreage: 40 Acres	

1. Outline the acreage dedicated to the subject well by colored pencil or hachure marks on the plat below.
2. If more than one lease is dedicated to the well, outline each and identify the ownership thereof (both as to working interest and royalty).
3. If more than one lease of different ownership is dedicated to the well, have the interests of all owners been consolidated by communitization, unitization, force-pooling, etc?

☐ Yes ☐ No If answer is "yes," type of consolidation _____

If answer is "no," list the owners and tract descriptions which have actually been consolidated (Use reverse side of this form if necessary.) _____

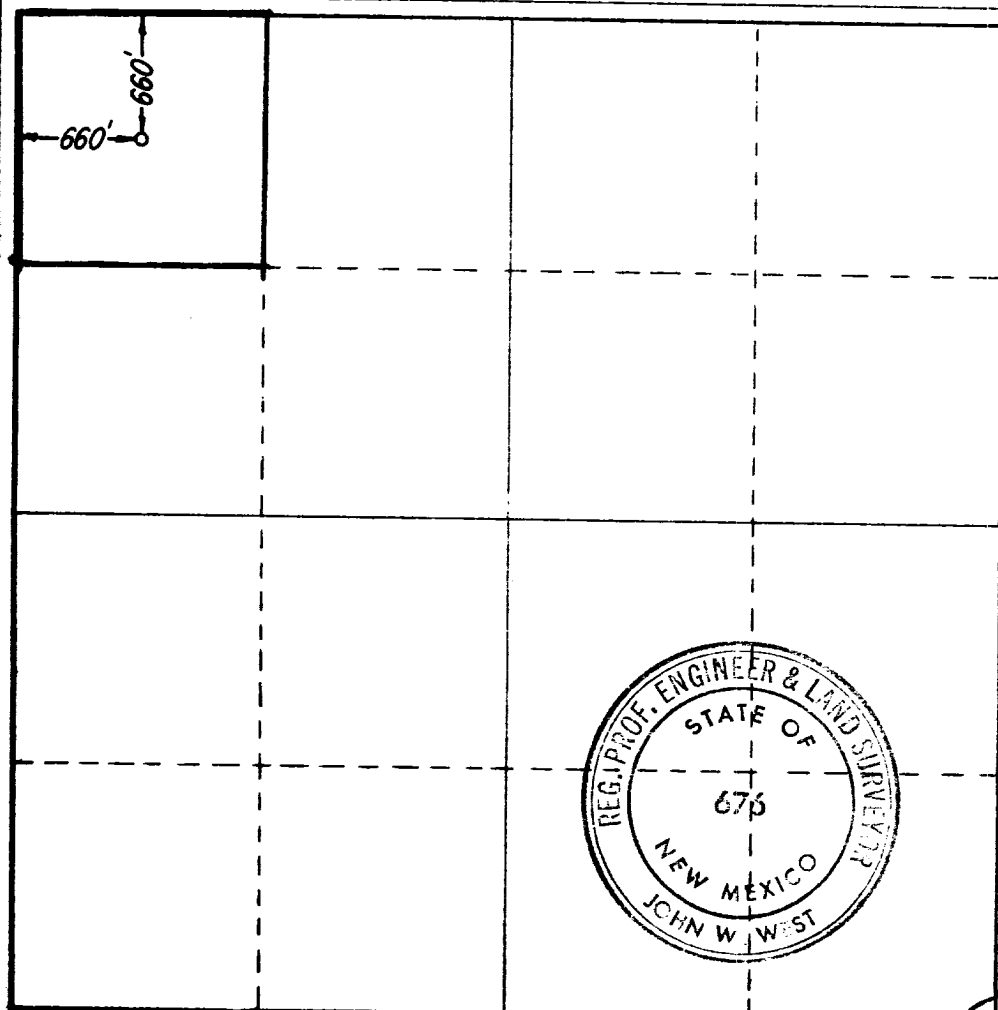
No allowable will be assigned to the well until all interests have been consolidated (by communitization, unitization, forced-pooling, or otherwise) or until a non-standard unit, eliminating such interests, has been approved by the Commission.

RECEIVED

APR 19 1966

O. C. C.

ARTESIA, OFFICE



CERTIFICATION

I hereby certify that the information contained herein is true and complete to the best of my knowledge and belief.

Name *Rumann*
Position
Assistant Prod. Supt.
Company **Union Texas Petroleum**
A Division of Allied
Date **Chemical Corporation**
3-28-66

I hereby certify that the well location shown on this plat was plotted from field notes of actual surveys made by me or under my supervision, and that the same is true and correct to the best of my knowledge and belief.

Date Surveyed
3/23/66
Registered Professional Engineer
and/or Land Surveyor

Certificate No.
NM PE & LS NO. 676

John W. West

