

UNITED STATES  
DEPARTMENT OF THE INTERIOR  
GEOLOGICAL SURVEY

## APPLICATION FOR PERMIT TO DRILL, DEEPEN, OR PLUG BACK

1a. TYPE OF WORK  
RE- DRILL ☒ DEEPEN ☐ PLUG BACK ☐

b. TYPE OF WELL  
OIL WELL ☒ GAS WELL ☐ OTHER ☐ Re-entry ☐ SINGLE ZONE ☒ MULTIPLE ZONE ☐

2. NAME OF OPERATOR  
Meadco Properties, Ltd.

3. ADDRESS OF OPERATOR  
P. C. Box 2236, Midland, Texas 79702

4. LOCATION OF WELL (Report location clearly and in accordance with any State requirements.)\*  
At surface 838.4' FNL & 1650' FWL of Section 4  
At proposed prod. zone

14. DISTANCE IN MILES AND DIRECTION FROM NEAREST TOWN OR POST OFFICE\*  
Approx. 20 miles east of Carlsbad, New Mexico

15. DISTANCE FROM PROPOSED\* LOCATION TO NEAREST PROPERTY OR LEASE LINE, FT.  
(Also to nearest drilg. unit line, if any) 838.4 FNL

16. NO. OF ACRES IN LEASE 320

17. NO. OF ACRES ASSIGNED TO THIS WELL 40

18. DISTANCE FROM PROPOSED LOCATION\* TO NEAREST WELL, DRILLING, COMPLETED, OR APPLIED FOR, ON THIS LEASE, FT. --

19. PROPOSED DEPTH 4250'

20. ROTARY OR CABLE TOOLS Rotary

21. ELEVATIONS (Show whether DF, RT, GR, etc.) 3428.7 Gr.

22. APPROX. DATE WORK WILL START\* July 1, 1979

23. PROPOSED CASING AND CEMENTING PROGRAM

SIZE OF HOLE	SIZE OF CASING	WEIGHT PER FOOT	SETTING DEPTH	QUANTITY OF CEMENT
	16"	55#	566'	400 sx
	11-3/4"	42#	1,624'	1075 sx
	8-5/8"	24#	4,052'	1075 sx
	* 5-1/2"	17# & 20#	11,475'	675 sx

- \* NOTE 5-1/2" casing shot off @ 5463' - Top cement plug on top @ 5268' T.D. 11,653' P&A. Plan to clean out to 4250' and attempt open hole completion in Delaware Sand. If necessary will run 5-1/2" casing to 4250' and cement with 100 sx. Will use existing roads and pad. Only surface disturbance will be opening a small pit.

Formerly Pennzoil Co.

APPROVED BY: [Signature]  
ACTING DISTRICT ENGINEER

IN ABOVE SPACE DESCRIBE PROPOSED PROGRAM: If proposal is to deepen or plug back, give data on present productive zone and proposed new productive zone. If proposal is to drill or deepen directionally, give pertinent data on subsurface locations and measured and true vertical depths. Give blowout preventer program, if any.

24. SIGNED Bill C. Coker TITLE Agent DATE 5/22/79

(This space for Federal or State office use)

PERMIT NO. APPROVAL DATE JUN 15 1979

APPROVED BY Joe J. Lara TITLE ACTING DISTRICT ENGINEER DATE JUN 15 1979

CONDITIONS OF APPROVAL, IF ANY:

NEW MEXICO OIL CONSERVATION COMMISSION  
WELL LOCATION AND ACREAGE DEDICATION PLAT

Form C-102  
Supersedes C-128  
Effective 1-1-65

All distances must be from the outer boundaries of the Section.

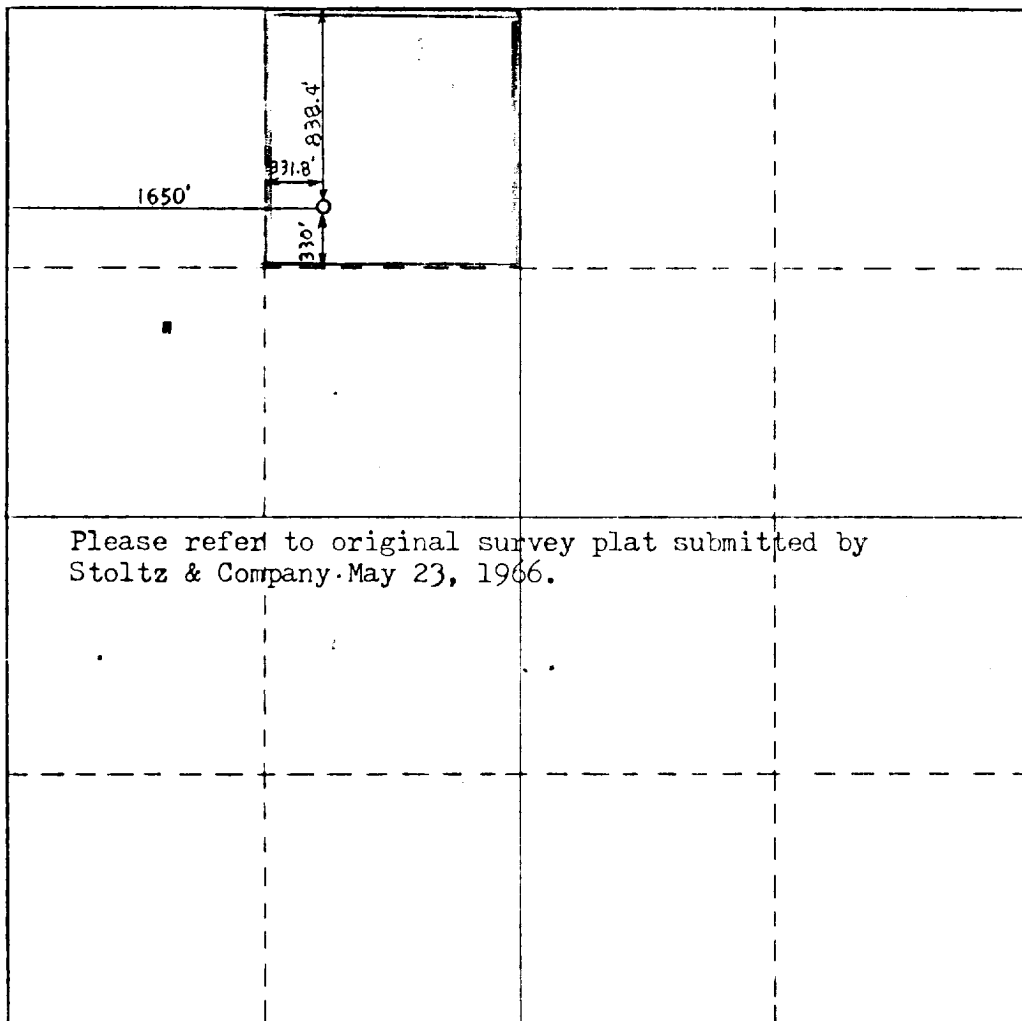
Operator <b>Meadco Properties, Ltd.</b>			Lease <b>Hudson Federal</b>		Well No. <b>1</b>
Unit Letter <b>C</b>	Section <b>4</b>	Township <b>21 South</b>	Range <b>29 East</b>	County <b>Eddy</b>	
Actual Footage Location of Well: <b>838.4</b> feet from the <b>North</b> line and <b>1650</b> feet from the <b>West</b> line					
Ground Level Elev. <b>3428.7</b>	Producing Formation <b>Delaware Sand</b>		Pool <b>Wildcat</b>	Dedicated Acreage: <b>3.33</b> <b>40</b> Acres	

1. Outline the acreage dedicated to the subject well by colored pencil or hatchure marks on the plat below.
2. If more than one lease is dedicated to the well, outline each and identify the ownership thereof (both as to working interest and royalty).
3. If more than one lease of different ownership is dedicated to the well, have the interests of all owners been consolidated by communitization, unitization, force-pooling, etc?

☐ Yes    ☐ No    If answer is "yes," type of consolidation \_\_\_\_\_

If answer is "no," list the owners and tract descriptions which have actually been consolidated. (Use reverse side of this form if necessary.) \_\_\_\_\_

No allowable will be assigned to the well until all interests have been consolidated (by communitization, unitization, forced-pooling, or otherwise) or until a non-standard unit, eliminating such interests, has been approved by the Commission.



**CERTIFICATION**

*I hereby certify that the information contained herein is true and complete to the best of my knowledge and belief.*

Name *Bert. Colton*

Position  
**Agent**

Company  
**Meadco Properties, Ltd.**

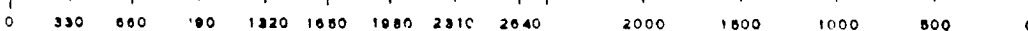
Date  
**May 22, 1979**

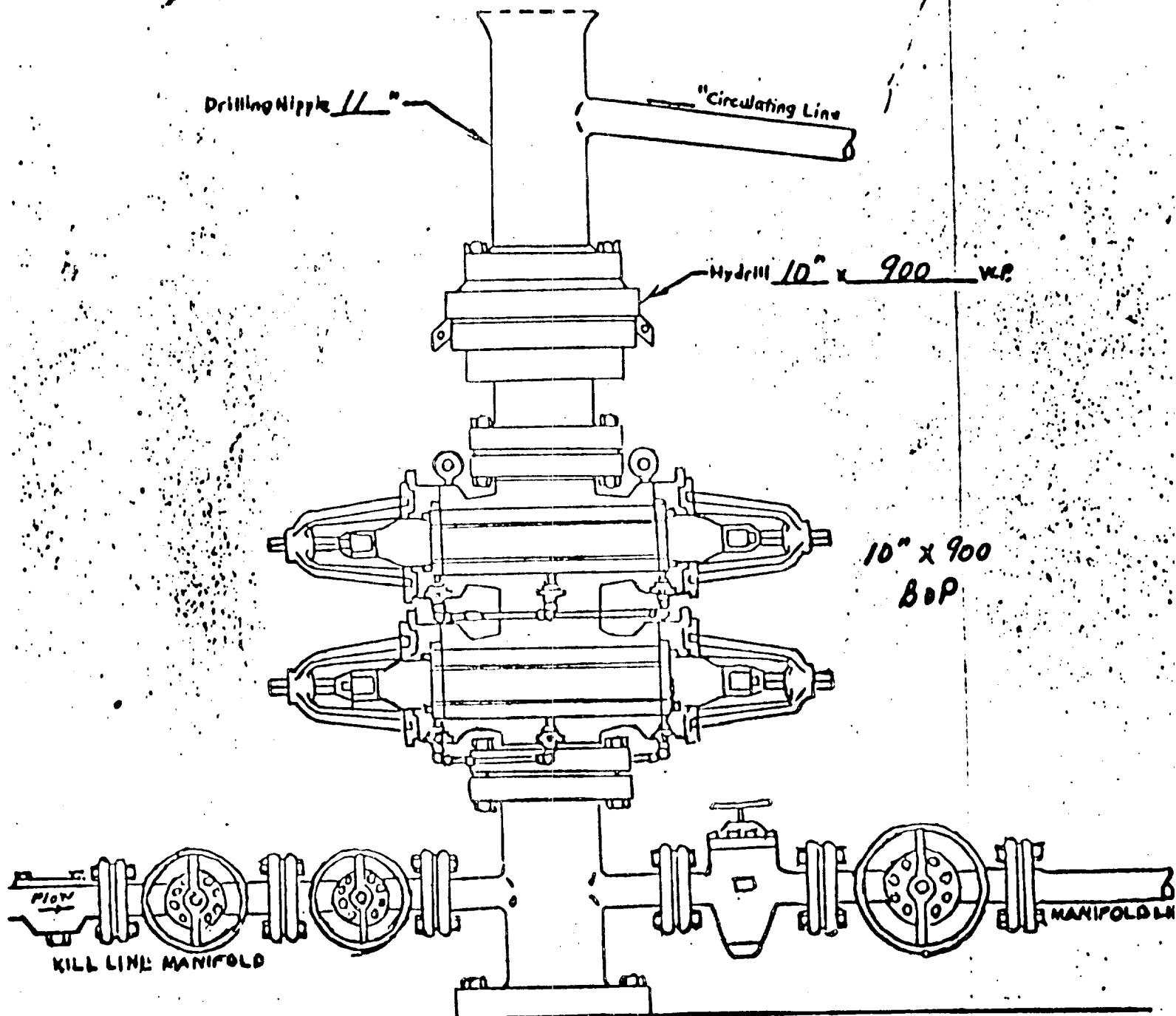
*I hereby certify that the well location shown on this plat was plotted from field notes of actual surveys made by me or under my supervision, and that the same is true and correct to the best of my knowledge and belief.*

Date Surveyed

Registered Professional Engineer  
and/or Land Surveyor

Certificate No.





WELL HEAD B.O.P.

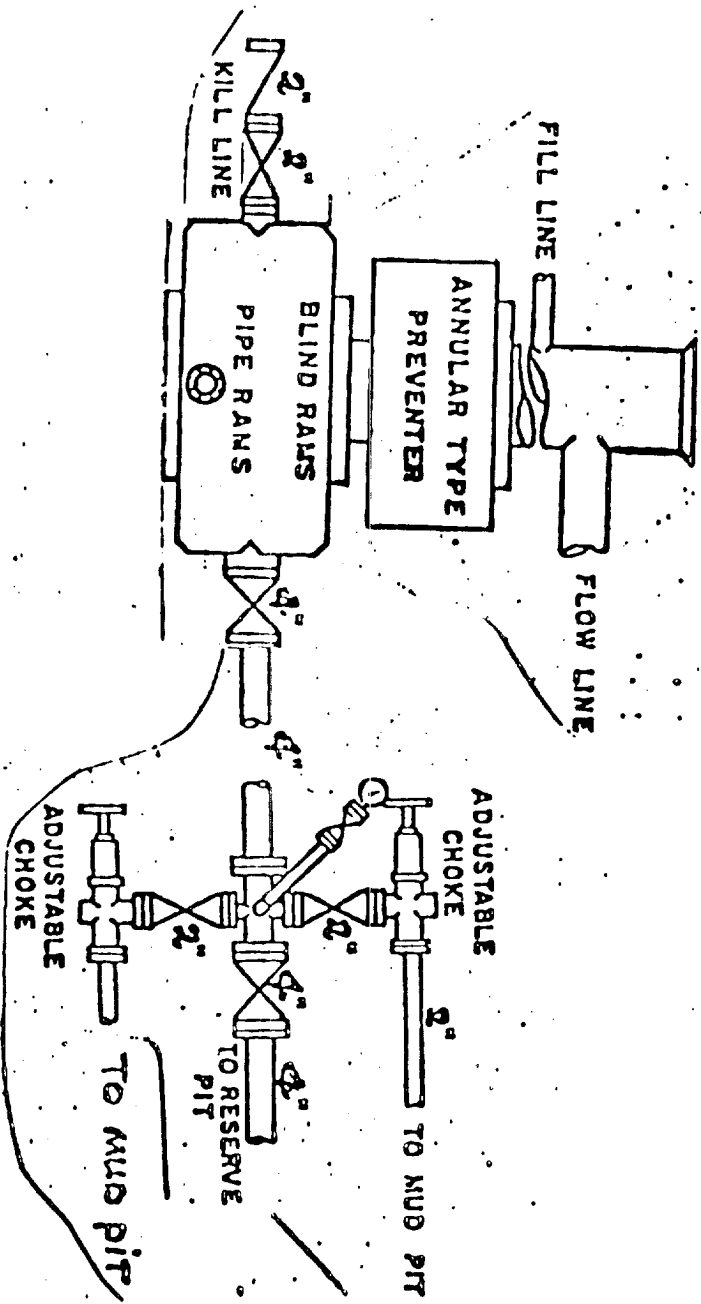
3000 W.P.

☐ Manual

☒ Hydraulic

Meadco Properties, Ltd. #1 Hudson Federal  
 838.4' FNL & 1650' FWL, Section 4, T-21-S, R-29-E  
 Eddy County, New Mexico

Meadco Properties, Ltd. #1 Hudson Federal  
 838.4' FNL & 1650' FNL, Section 4, T-21-S, R-29-E  
 Eddy County, New Mexico



900 Series