

MEXICO OIL CONSERVATION COMMISS.
WELL LOCATION AND ACREAGE DEDICATION PLAT

Form C-102
 Supersedes C-128
 Effective 1-1-65

All distances must be from the outer boundaries of the Section.

Operator PAN AMERICAN PETROLEUM CORPORATION			Lease BIG EDDY UNIT FEDERAL		Well No. 18
Unit Letter F	Section 3	Township 21-S	Range 29-E	County EDDY	
Actual Footage Location of Well: 1980 feet from the North line and 1980 feet from the West line					
Ground Level Elev:	Producing Formation Mississippian - Barnett		Pool Wildcat	Dedicated Acreage: 310.32 Acres	

1. Outline the acreage dedicated to the subject well by colored pencil or hachure marks on the plat below.
2. If more than one lease is dedicated to the well, outline each and identify the ownership thereof (both as to working interest and royalty).
3. If more than one lease of different ownership is dedicated to the well, have the interests of all owners been consolidated by communitization, unitization, force-pooling, etc?

RECEIVED
APR 7 1967

☐ Yes ☐ No If answer is "yes," type of consolidation _____

If answer is "no," list the owners and tract descriptions which have actually been consolidated. (Use reverse side of this form if necessary.) _____

No allowable will be assigned to the well until all interests have been consolidated (by communitization, unitization, forced-pooling, or otherwise) or until a non-standard unit, eliminating such interests, has been approved by the Commission.

CERTIFICATION

I hereby certify that the information contained herein is true and complete to the best of my knowledge and belief.

Name _____

Position
AREA SUPERINTENDENT

Company
PAN AMERICAN PETROLEUM CORP.

Date
APRIL 5, 1967

I hereby certify that the well location shown on this plat was plotted from field notes of actual surveys made by me or under my supervision, and that the same is true and correct to the best of my knowledge and belief.

Date Surveyed _____

Registered Professional Engineer
 and/or Land Surveyor

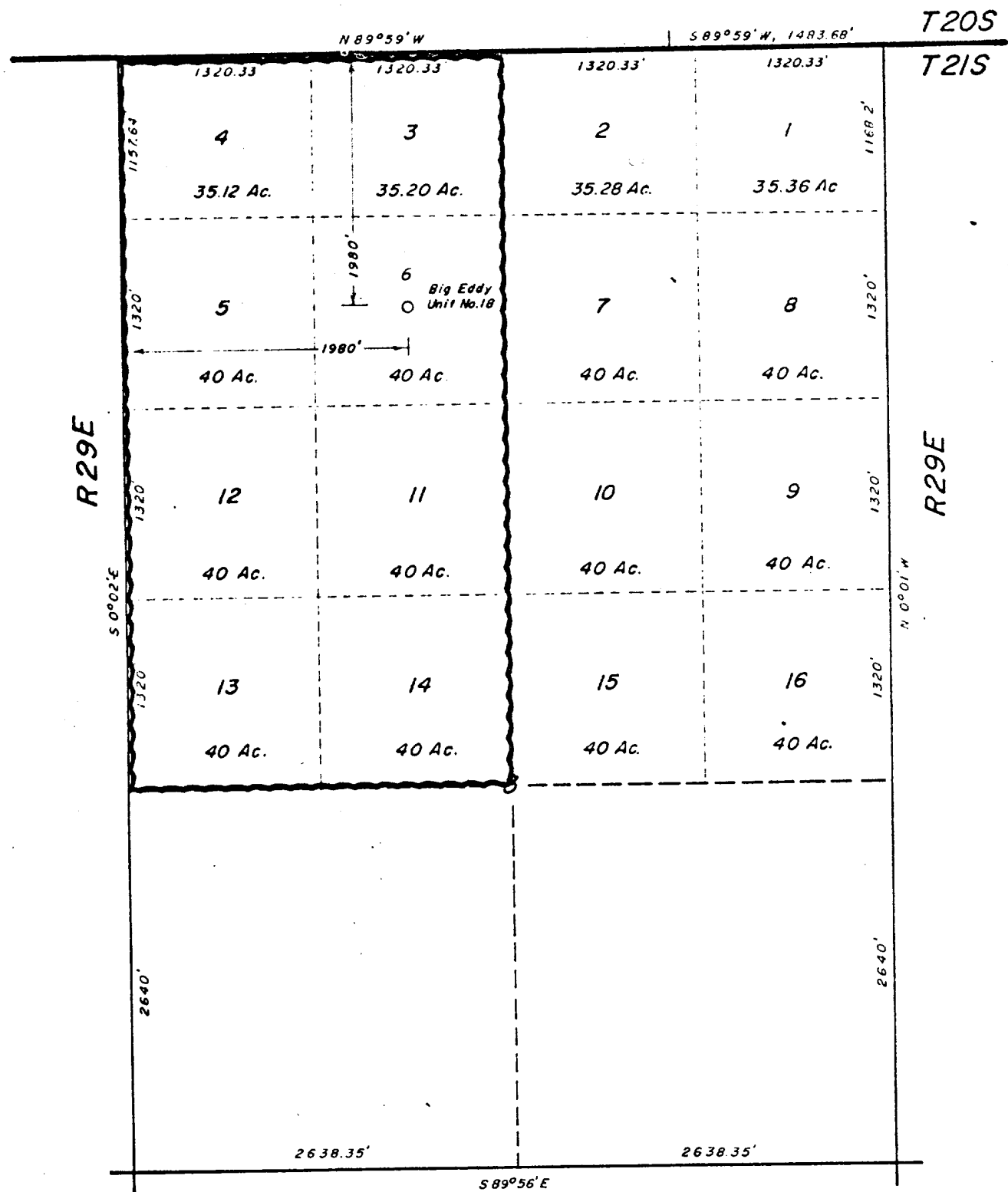
Certificate No. _____

(SEE ATTACHED PLAT)

DISTRIBUTION

0+ USGS-ARTESIA
 1- NSW
 1- W.F.
 1- RRY
 1- STATELAND
 1- PERRY R. BASS

0 330 660 990 1320 1650 1980 2310 2640 2000 1500 1000 500 0



Note: This plat is a copy of Section 3 as plated by the U. S. Bureau of Land Management, from survey notes of January, and February of 1916, for the Resurvey of T21S, R29E.

RECEIVED
APR 6 1967
U.S. GEOLOGICAL SURVEY
ARTESIAN NEW MEXICO

I HEREBY CERTIFY THAT THIS PLAT WAS MADE FROM NOTES TAKEN IN THE FIELD IN A BONA FIDE SURVEY MADE UNDER MY SUPERVISION, AND THAT THE SAME IS TRUE AND CORRECT TO THE BEST OF MY KNOWLEDGE AND BELIEF.

John W. West
JOHN W. WEST, N.M. P.E. & L.S. NO. 676
TEXAS R.P.S. NO. 1138

PAN AMERICAN PETROLEUM CORP.	
A plat of Section 3, T21S, R29E, N. M. P. M., Eddy County, New Mexico.	
JOHN W. WEST ENGINEERING COMPANY CONSULTING ENGINEERS HOBBS, NEW MEXICO	
Scale 1" = 1000'	Drawn by chb
Date Apr. 4, 1967	Sheet 1 of 1 Sheets