

NE MEXICO OIL CONSERVATION COMMISSION
WELL LOCATION AND ACREAGE DEDICATION PLAT

Form C-102
Supersedes C-128
Effective 1-1-65

All distances must be from the outer boundaries of the Section.

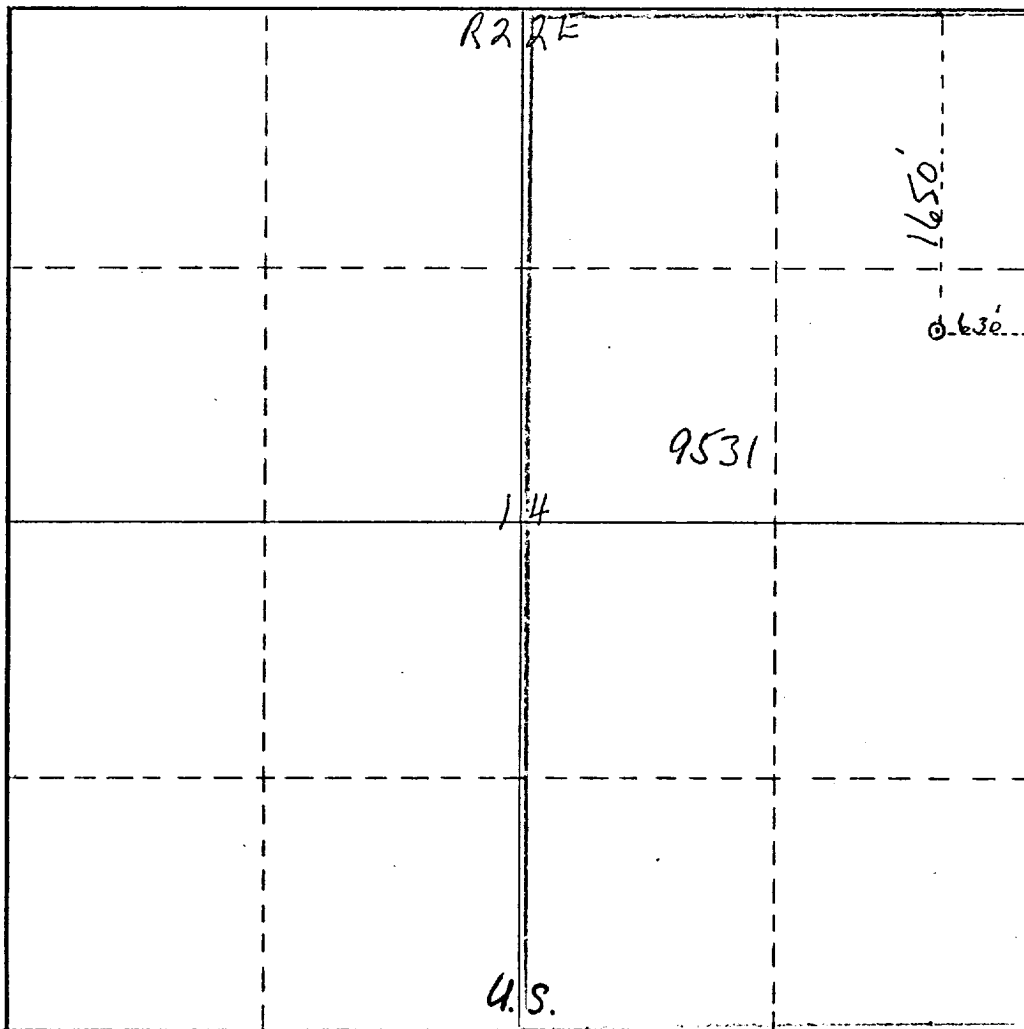
Operator Yates Petroleum Corporation		Lease Hilliard "BF" Federal		Well No. 1
Unit Letter H	Section 14	Township 21S	Range 22E	County Eddy
Actual Footage Location of Well: 1650 feet from the North line and 630 feet from the East line				
Ground Level Elev. 4139'	Producing Formation Morrow	Pool Wildcat	Dedicated Acreage: 320 Acres	

1. Outline the acreage dedicated to the subject well by colored pencil or hachure marks on the plat below.
2. If more than one lease is dedicated to the well, outline each and identify the ownership thereof (both as to working interest and royalty).
3. If more than one lease of different ownership is dedicated to the well, have the interests of all owners been consolidated by communitization, unitization, force-pooling, etc?

☐ Yes ☐ No If answer is "yes," type of consolidation _____

If answer is "no," list the owners and tract descriptions which have actually been consolidated. (Use reverse side of this form if necessary.) _____

No allowable will be assigned to the well until all interests have been consolidated (by communitization, unitization, forced-pooling, or otherwise) or until a non-standard unit, eliminating such interests, has been approved by the Commission.



CERTIFICATION

I hereby certify that the information contained herein is true and complete to the best of my knowledge and belief.

Eddie M. Mahfood
Name

Eddie M. Mahfood

Position
Engineer

Company
Yates Petroleum Corp.

Date
4-15-76

RECEIVED

I hereby certify that the well location shown on this plat was plotted from field notes made by me or under my supervision, and that the same are true and correct to the best of my knowledge.

U.S. GEOLOGICAL SURVEY
ARTESIA, NEW MEXICO

REFER TO ORIGINAL PLAT

Date Surveyed
Dated: 5-31-67

Registered Professional Engineer
and/or Land Surveyor

Certificate No.

0 330 660 990 1320 1650 1980 2310 2640 2000 1500 1000 500 0