

N. MEXICO OIL CONSERVATION COMMISSION
WELL LOCATION AND ACREAGE DEDICATION PLAT

Form C-102
Supersedes C-128
Effective 1-1-65

All distances must be from the outer boundaries of the Section.

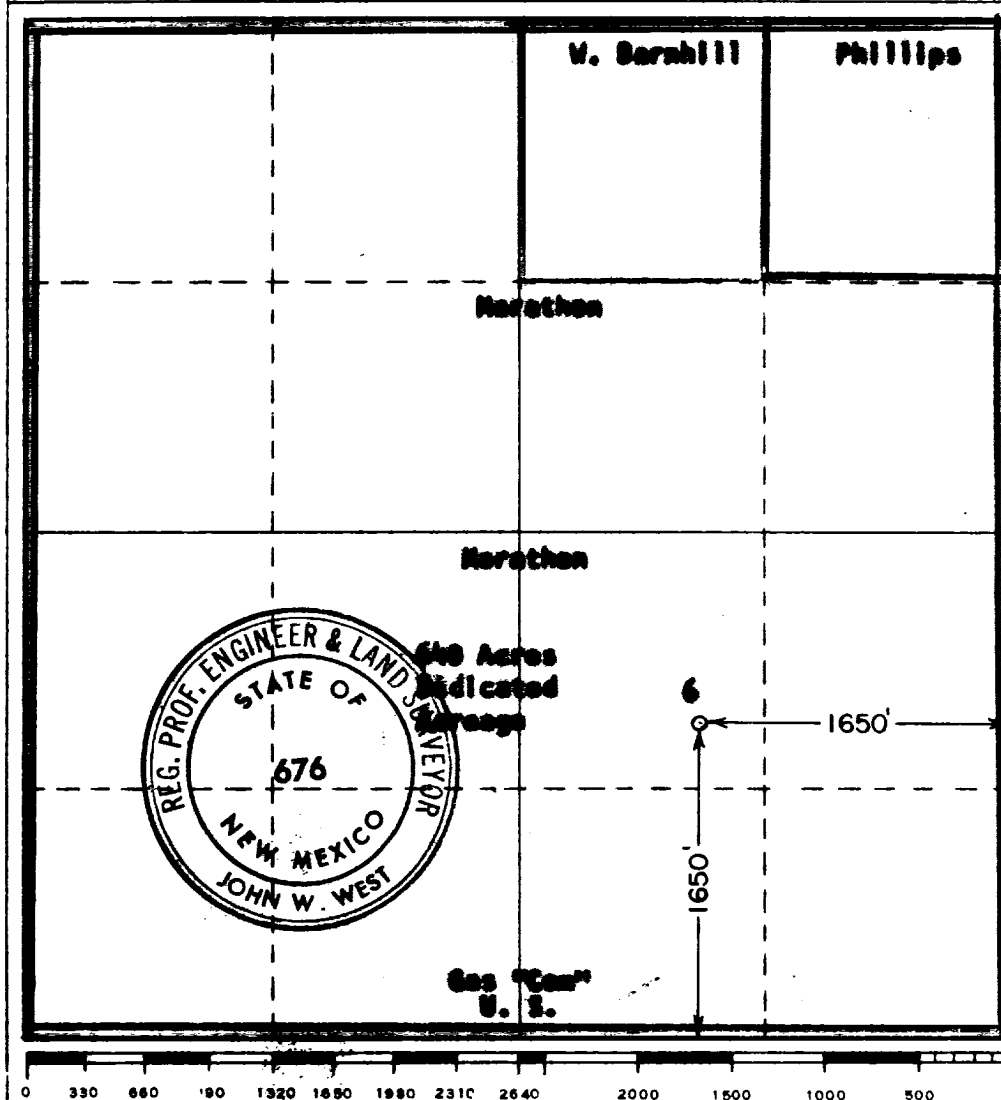
Operator MARATHON OIL CO.			Lease NORTH INDIAN BASIN UNIT GAS COMM.		Well No. 6
Unit Letter J	Section 4	Township 21 SOUTH	Range 23 EAST	County EDDY	
Actual Footage Location of Well: 1650 feet from the SOUTH line and 1650 feet from the EAST line					
Ground Level Elev. 3846.0	Producing Formation UPPER PENNSYLVANIAN	Pool UNDISG. (IND. BASIN UPPER PENN)	Dedicated Acreage: 640 Acres		

- Outline the acreage dedicated to the subject well by colored pencil or hachure marks on the plat below.
- If more than one lease is dedicated to the well, outline each and identify the ownership thereof (both as to working interest and royalty).
- If more than one lease of different ownership is dedicated to the well, have the interests of all owners been consolidated by communitization, unitization, force-pooling, etc?

☒ Yes ☐ No If answer is "yes," type of consolidation **Communitization Agreement**

If answer is "no," list the owners and tract descriptions which have actually been consolidated. (Use reverse side of this form if necessary.)

No allowable will be assigned to the well until all interests have been consolidated (by communitization, unitization, forced-pooling, or otherwise) or until a non-standard unit, eliminating such interests, has been approved by the Commission.



CERTIFICATION

I hereby certify that the information contained herein is true and complete to the best of my knowledge and belief.

Joe W. Younger
Name
Joe W. Younger
Position
Area Petroleum Engineer
Company
Marathon Oil Company
Date
May 31, 1967

I hereby certify that the well location shown on this plat was taken from field notes of actual surveys made by me or under my supervision, and that the same is true and correct to the best of my knowledge and belief.

RECEIVED JUN 5 1967
U. S. GEOLOGICAL SURVEY ARTESIA, NEW MEXICO
Date Surveyed
MAY
Registered Professional and/or Land Surveyor
John W. West
Certificate No.
676