

MEXICO OIL CONSERVATION COM  
WELL LOCATION AND ACREAGE DEDICATION PLAT

Form No. 1  
Superintendent  
Effective 1/1/84

All distances must be from the outer boundaries of the Section

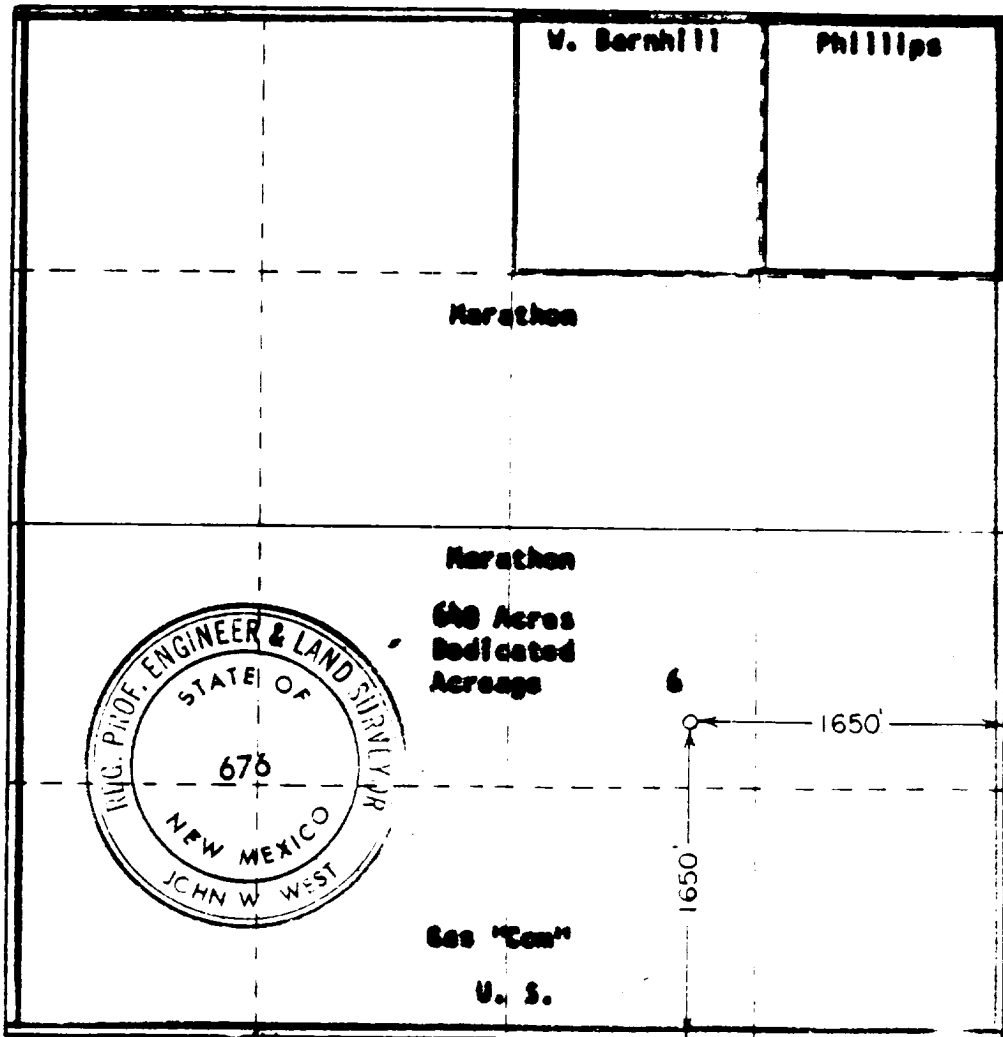
|                                    |                      |                                   |                         |         |
|------------------------------------|----------------------|-----------------------------------|-------------------------|---------|
| MARATHON OIL CO.                   |                      | NORTH INDIAN BASIN UNIT GAS COMM. |                         | 6       |
| Section                            | 4                    | Township                          | 21 SOUTH                | 10 EAST |
| EDDY                               |                      |                                   |                         |         |
| 1650 feet from the SOUTH 1650 EAST |                      |                                   |                         |         |
| Surface Level Elev.                | Production Formation |                                   | 678                     |         |
| 3846.0                             | Wolfcamp             |                                   | Indian Basin (Wolfcamp) |         |

1. Outline the acreage dedicated to the subject well by colored pencil or hachure marks on the plat below.
2. If more than one lease is dedicated to the well, outline each and identify the ownership thereof (both as to working interest and royalty).
3. If more than one lease of different ownership is dedicated to the well, have the interests of all owners therein consolidated by communitization, unitization, force-pooling, etc?

Yes  No If answer is "yes," type of consolidation Communitization Agreement

If answer is "no," list the owners and tract descriptions which have actually been consolidated. (Use reverse side of this form if necessary.)

No allowable will be assigned to the well until all interests have been consolidated (by communitization, unitization, forced-pooling, or otherwise) or until a non-standard unit, eliminating such interests, has been approved by the Commission.



CERTIFICATION

I hereby certify that the information contained herein is true and complete to the best of my knowledge and belief.

*J.R. Jenkins*  
J.R. Jenkins  
Hobbs Prod. Superintendent

Marathon Oil Company

7/11/89

I hereby certify that the well location shown on this plat was plotted from field notes of actual surveys made by me or under my supervision, and that the same is true and correct to the best of my knowledge and belief.

Date of approval  
MA 24, 1987

*John W. West*  
John W. West  
676