

UNITED STATES
DEPARTMENT OF THE INTERIOR
GEOLOGICAL SURVEY

APPLICATION FOR PERMIT TO DRILL, DEEPEN, OR PLUG BACK

1a. TYPE OF WORK

DRILL ☒DEEPEN ☐PLUG BACK ☐

b. TYPE OF WELL

OIL
WELL ☐GAS
WELL ☒

OTHER

SINGLE
ZONE ☒MULTIPLE
ZONE ☐

2. NAME OF OPERATOR

PAN AMERICAN PETROLEUM CORPORATION

3. ADDRESS OF OPERATOR

BOX 68, HO3BS, N. M. 88240

4. LOCATION OF WELL (Report location clearly and in accordance with any State requirements.)*
At surface1565' FNL x 1980' FWL Sec. 5 (UNIT F, SE 1/4 NW 1/4)
At proposed prod. zone

14. DISTANCE IN MILES AND DIRECTION FROM NEAREST TOWN OR POST OFFICE*

15. DISTANCE FROM PROPOSED*

LOCATION TO NEAREST
PROPERTY OR LEASE LINE, FT.
(Also to nearest drlg. line, if any)

16. NO. OF ACRES IN LEASE

990.37

17. NO. OF ACRES ASSIGNED
TO THIS WELL

269.44

18. DISTANCE FROM PROPOSED LOCATION*
TO NEAREST WELL, DRILLING, COMPLETED,
OR APPLIED FOR, ON THIS LEASE, FT.

19. PROPOSED DEPTH

12,100'

20. ROTARY OR CABLE TOOLS

O-TD

21. ELEVATIONS (Show whether DF, RT, GR, etc.)

22. APPROX. DATE WORK WILL START*

9-26-68

23. PROPOSED CASING AND CEMENTING PROGRAM

SIZE OF HOLE	SIZE OF CASING	WEIGHT PER FOOT	SETTING DEPTH	QUANTITY OF CEMENT
17 1/2	13 3/8"	48"	300'	Circulate
12 1/4	9 5/8"	32.3-36"	3200'	BASE OF SALT
7 7/8	5 1/2"	14-23"	12100'	Fill 600' above pay.

After drilling well logs will be run and evaluations made, perforating and or stimulating as necessary in attempting commercial production.

RECEIVED
SEP 24 1968
U.S. GEOLOGICAL SURVEY
ARTESIA, NEW MEXICO

IN ABOVE SPACE DESCRIBE PROPOSED PROGRAM: If proposal is to deepen or plug back, give data on present productive zone and proposed new productive zone. If proposal is to drill or deepen directionally, give pertinent data on subsurface locations and measured and true vertical depths. Give blowout preventer program, if any.

24.

SIGNED

AREA SUPERINTENDENT

DATE

9-23-68

(This space for Federal or State office use)

PERMIT NO.

APPROVED BY

CONDITIONS OF APPROVAL IF ANY:

0+ 4- USGS-ART
1- NSO
1- SOSA
1- RRV
1- BASS

SEP 24 1968

R. L. DUNHAM

ACTING DISTRICT SUPERINTENDENT

THIS APPROVAL IS RESCINDED IF OPERATIONS
ARE NOT COMMENCED WITHIN 3 MONTHS.
EXPIRES DATE DEC 24 1968

SALT SECTION MUST BE ISOLATED FROM
FLUIDS ABOVE AND BELOW BY CEMENT.

DATE SUFFICIENT TIME TO
NOTIFY USGS IN 13 1/2 CASING.
WITNESS CEMENTING TO 9 1/2"

*See Instructions On Reverse Side

V MEXICO OIL CONSERVATION COMMISS. ON
WELL LOCATION AND ACREAGE DEDICATION PLAT

Form C-102
Supersedes C-128
Effective 1-1-65

All distances must be from the outer boundaries of the Section.

Operator PAN AMERICAN PETROLEUM CORP.		Lease EIG EDDY UNIT		Well No. 13
Unit Letter F	Section 5	Township 21 SOUTH	Range 28 EAST	County EDDY
Actual Footage Location of Well: 1565 feet from the NORTH line and 1980 feet from the WEST line				
Ground Level Elev. MISS.	Producing Formation WILDCAT	Pool WILDCAT	Dedicated Acreage: 269.44 Acres	

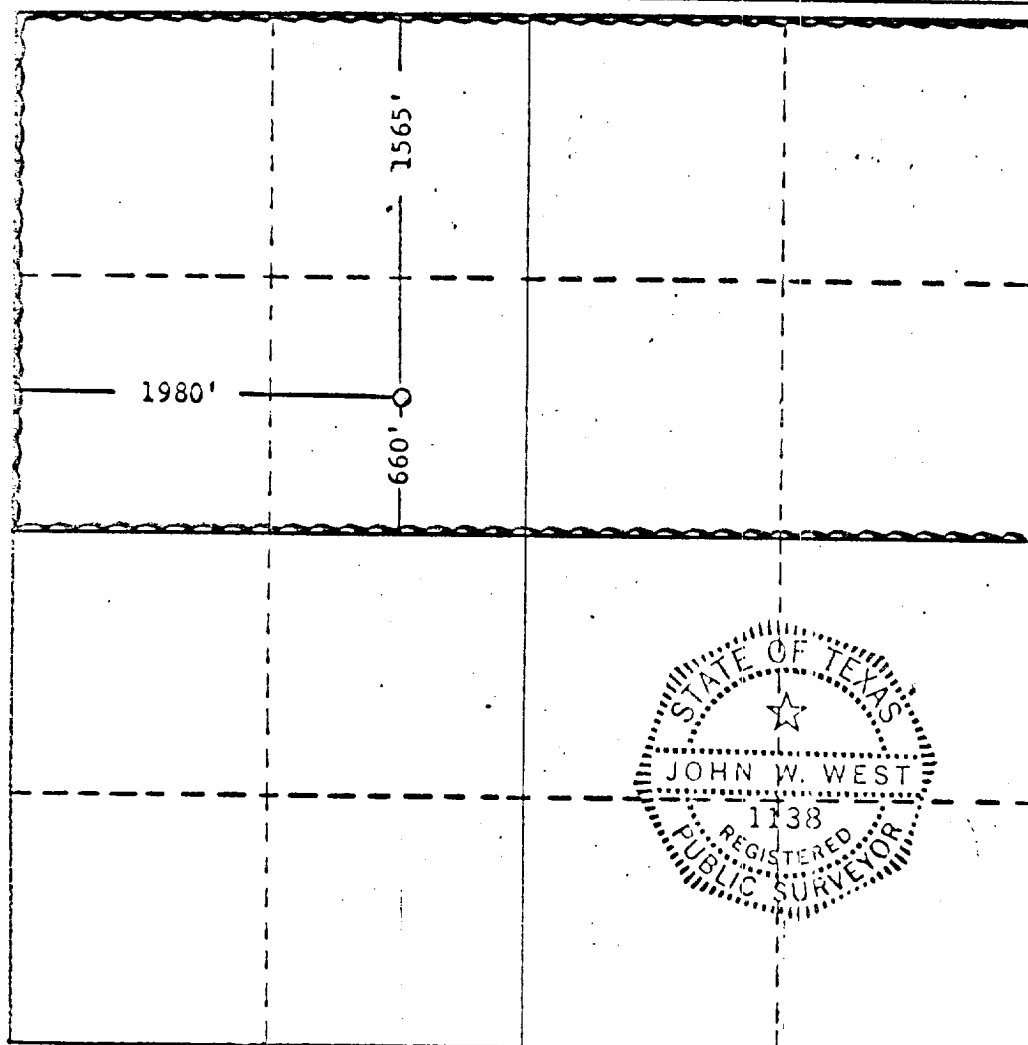
1. Outline the acreage dedicated to the subject well by colored pencil or hatchure marks on the plat below.
2. If more than one lease is dedicated to the well, outline each and identify the ownership thereof (both as to working interest and royalty).
3. If more than one lease of different ownership is dedicated to the well, have the interests of all owners been consolidated by communitization, unitization, force-pooling, etc?

☐ Yes ☐ No If answer is "yes," type of consolidation _____

SEP 25 1968

If answer is "no," list the owners and tract descriptions which have actually been consolidated (by communitization, unitization, forced-pooling, or otherwise) or until a non-standard unit, eliminating such interests, has been approved by the Commission.

No allowable will be assigned to the well until all interests have been consolidated (by communitization, unitization, forced-pooling, or otherwise) or until a non-standard unit, eliminating such interests, has been approved by the Commission.



CERTIFICATION

I hereby certify that the information contained herein is true and complete to the best of my knowledge and belief.

Name _____

Position

AREA SUPERINTENDENT

Company

PAN AMERICAN PETROLEUM CORPORATION

Date

BOX 68, HOBBS, N. M. 88240

SEP 23 1968

I hereby certify that the well location shown on this plat was plotted from field notes of actual surveys made by me or under my supervision, and that the same is true and correct to the best of my knowledge and belief.

Date Surveyed

9-20-1968

Registered Professional Engineer and/or Land Surveyor

John W. West

Certificate No.

676

0 220 660 1100 1540 1980 2420 2860 3300 3740 4180 4620 5060 5500 5940 6380 6820 7260 7700 8140 8580 9020 9460 9900