

**NEW MEXICO OIL CONSERVATION COMMISSION
WELL LOCATION AND ACREAGE DEDICATION PLAT**

Form C-102
Supersedes C-128
Effective 1-1-65

All distances must be from the outer boundaries of the Section

Operator CORINNE GRACE			Lease Go Po Go		Well No. 1
Unit Letter G	Section 25	Township 22 SOUTH	Range 26 EAST	County EDDY	
Actual Footage Location of Well:					
1980 feet from the NORTH line and		1980 feet from the EAST line			
Ground Level Elev. 3194.1	Producing Formation Morrow	Pool Undes. So. Carlsbad Morrow		Dedicated Acreage: 320 Acres	

1. Outline the acreage dedicated to the subject well by colored pencil or hachure marks on the plat below.
2. If more than one lease is dedicated to the well, outline each and identify the ownership thereof (both as to working interest and royalty). See Schedules A and B.
3. If more than one lease of different ownership is dedicated to the well, have the interests of all owners been consolidated by communitization, unitization, force-pooling, etc?

RECEIVED

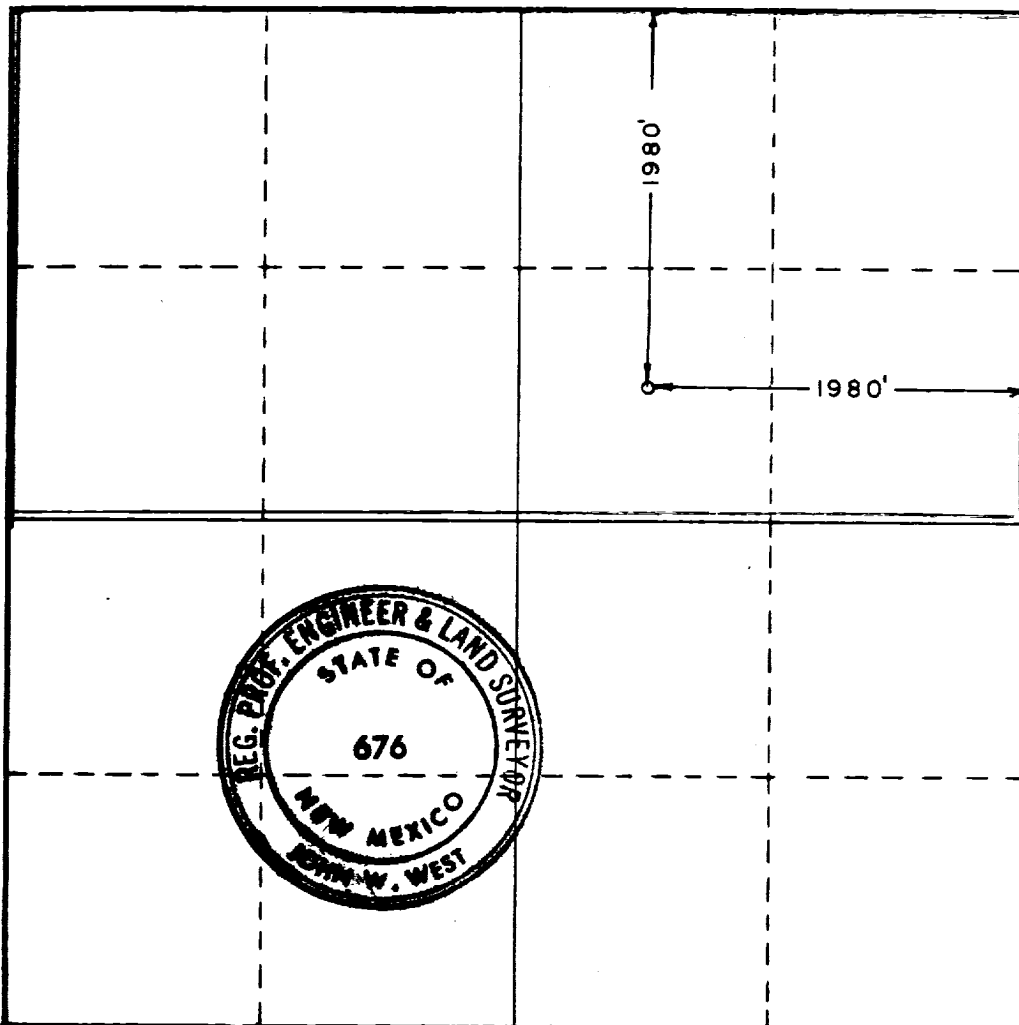
AUG 16 1971

☐ Yes ☒ No If answer is "yes," type of consolidation _____

O.C.C.

ARTESIA, OFFICE

If answer is "no," list the owners and tract descriptions which have actually been consolidated. (Use reverse side of this form if necessary.) Pooling clause of leases will be utilized; unleased interests will be force pooled. 3/7/72 R-4266
No allowable will be assigned to the well until all interests have been consolidated (by communitization, unitization, forced-pooling, or otherwise) or until a non-standard unit, eliminating such interests, has been approved by the Commission.



CERTIFICATION

I hereby certify that the information contained herein is true and complete to the best of my knowledge and belief.

Name David L. Smiley
Position Agent
Company Corinne Grace
Date August 16, 1971

I hereby certify that the well location shown on this plat was plotted from field notes of actual surveys made by me or under my supervision, and that the same is true and correct to the best of my knowledge and belief.

Date Surveyed
MAY 28, 1971

Registered Professional Engineer and/or Land Surveyor

John W. West
Certificate No. **676**

