

**NEW MEXICO OIL CONSERVATION COMMISSION
WELL LOCATION AND ACREAGE DEDICATION PLAT**

Form C-102
Supersedes C-128
Effective 1-1-65

All distances must be from the outer boundaries of the Section.

Operator GULF OIL CORP.			Lease SPRING UNIT #26.		Well No. 5
Unit Letter C	Section 35	Township 20 SOUTH	Range 26 EAST	County EDDY	
Actual Footage Location of Well: 660 feet from the NORTH line and 1650 feet from the WEST line					
Ground Level Elev. 3252.5	Producing Formation Penn		Pool Spring - Upper Penn Gas		Dedicated Acreage: 1/2, Sec 35 Acres

1. Outline the acreage dedicated to the subject well by colored pencil or hatchure marks on the plat below.

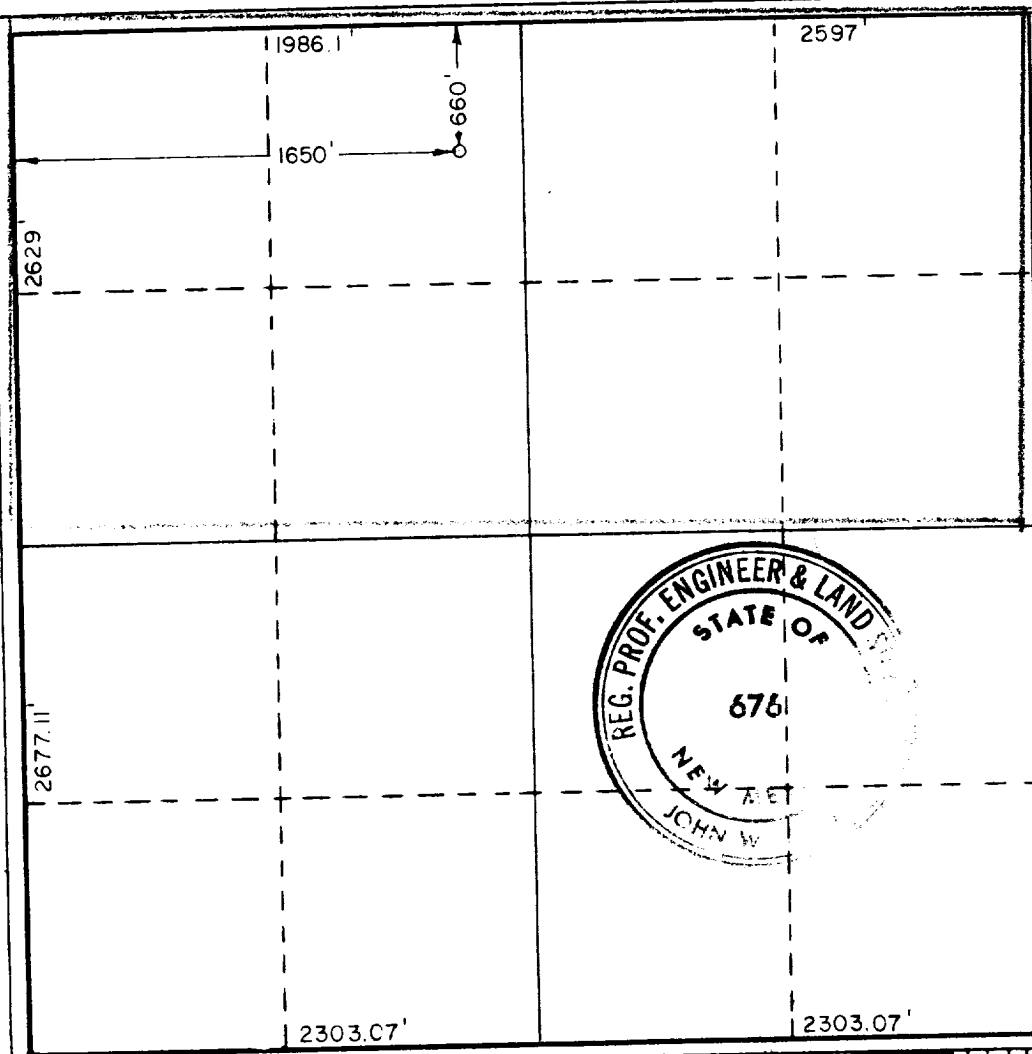
2. If more than one lease is dedicated to the well, outline each and identify the ownership thereof (both as to working interest and royalty).

3. If more than one lease of different ownership is dedicated to the well, have the interests of all owners been consolidated by communitization, unitization, force-pooling, etc?

☐ Yes ☐ No If answer is "yes," type of consolidation _____

If answer is "no," list the owners and tract descriptions which have actually been consolidated. (Use reverse side of this form if necessary.) _____

No allowable will be assigned to the well until all interests have been consolidated (by communitization, unitization, forced-pooling, or otherwise) or until a non-standard unit, eliminating such interests, has been approved by the Commission. **NSL has been applied for.**



CERTIFICATION

I hereby certify that the information contained herein is true and complete to the best of my knowledge and belief.

Name **ORIGINAL SIGNED BY
E. D. BORLAND**

Position
Area Production Manager

Company
Gulf Oil Corporation

Date
June 25, 1971

I hereby certify that the well location shown on this plat was determined from first-hand notes of actual surveys made under my supervision and that the same is true and correct to the best of my knowledge and belief.

**RECEIVED
JUN 28 1971
U.S. GEOLOGICAL SURVEY
ALBUQUERQUE, NEW MEXICO**

Date Surveyed
JUNE 24, 1971

Registered Professional Engineer
and/or Land Surveyor

John W. West
Certificate No. **676**

