

NEW MEXICO OIL CONSERVATION COMMISSION
WELL LOCATION AND ACREAGE DEDICATION

RECEIVED
OCT 15 1981
Form C-102
Supersedes C-128
Effective 1-1-65

AMENDED

All distances must be from the outer boundaries of the Section.

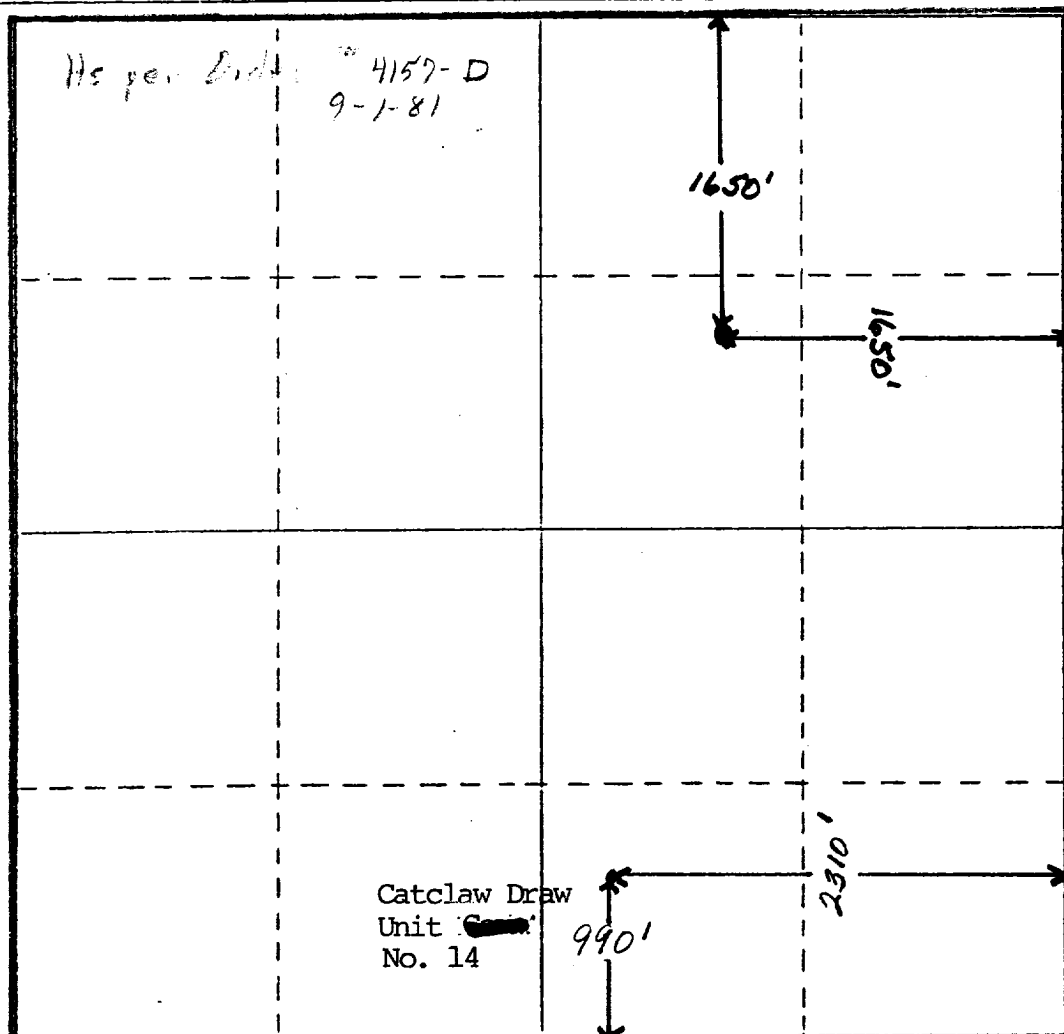
Operator TENNECO OIL COMPANY		Lease Catclaw Draw Unit		Well No. 2
Unit Letter G	Section 23	Township 21 South	Range 25 East	County Eddy
Actual Footage Location of Well: 1650 feet from the South North line and 1650 feet from the East line				
Ground Level Elev. 3305	Producing Formation Morrow	Pool Catclaw Draw Morrow	Dedicated Acreage: 640 Acres	

1. Outline the acreage dedicated to the subject well by colored pencil or hachure marks on the plat below.
2. If more than one lease is dedicated to the well, outline each and identify the ownership thereof (both as to working interest and royalty).
3. If more than one lease of different ownership is dedicated to the well, have the interests of all owners been consolidated by communitization, unitization, force-pooling, etc?

☒ Yes ☐ No If answer is "yes," type of consolidation Federal and State Approved Unit

If answer is "no," list the owners and tract descriptions which have actually been consolidated. (Use reverse side of this form if necessary.)

No allowable will be assigned to the well until all interests have been consolidated (by communitization, unitization, forced-pooling, or otherwise) or until a non-standard unit, eliminating such interests, has been approved by the Commission.



CERTIFICATION

I hereby certify that the information contained herein is true and complete to the best of my knowledge and belief.

Anita Gray

Name
ANITA GRAY

Position
Production Analyst

Company
Tenneco Oil Company

Date
October 12, 1981

I hereby certify that the well location shown on this plat was plotted from field notes of actual surveys made by me or under my supervision, and that the same is true and correct to the best of my knowledge and belief.

Date Surveyed

Registered Professional Engineer and/or Land Surveyor

Certificate No.

330 165 90 1320 1650 1980 2310 2640 2000 1500 1000 500 0