

RECEIVED

NEW MEXICO OIL CONSERVATION COMMISSION
WELL LOCATION AND ACREAGE DEDICATION PLATForm G-102
Supersedes G-123
Effective 1-1-65

JUN 21 1972

All distances must be from the outer boundaries of the Section.

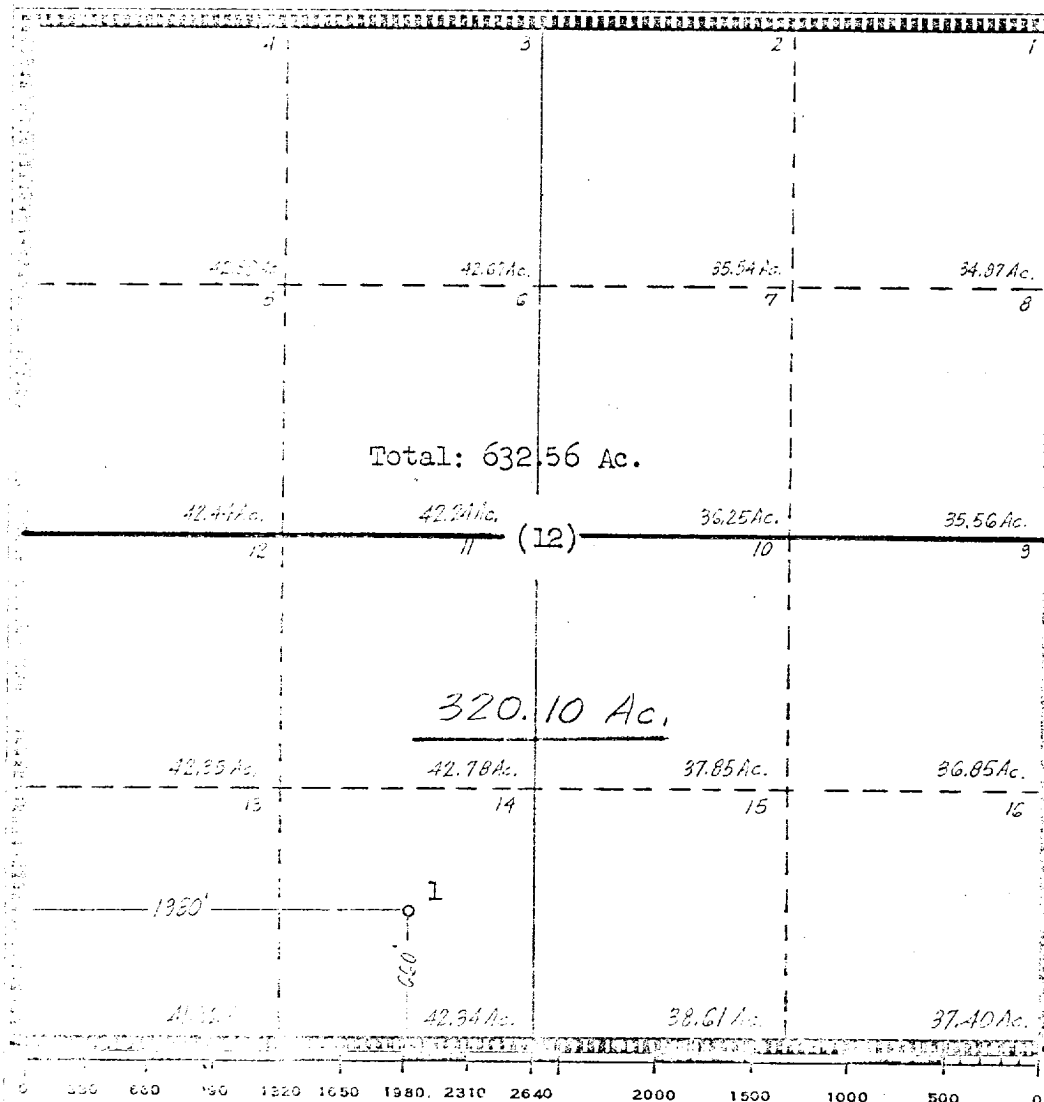
Operator TEXACO Inc.		Lease E. J. Levers Federal No. 1			Office No. ARTESIA, OFFICE 1	
Grid Letter T	Section 12	Township 21-South	Range 25-East	County Lea Eddy		
Actual Location of Well: 360' feet from the South line and 1980' feet from the West line Sec. 12						
Ground Level Elev. 360'	Producing Formation Norrow		Pool Golden Eagle	Dedicated Acreage 320.10		Acres

1. Outline the acreage dedicated to the subject well by colored pencil or hatchure marks on the plat below.
2. If more than one lease is dedicated to the well, outline each and identify the ownership thereof (both as to working interest and royalty).
3. If more than one lease of different ownership is dedicated to the well, have the interests of all owners been consolidated by communitization, unitization, force-pooling, etc?

☐ Yes ☐ No If answer is "yes," type of consolidation _____

If answer is "no," list the owners and tract descriptions which have actually been consolidated. (Use reverse side of this form if necessary.) _____

No allowable will be assigned to the well until all interests have been consolidated (by communitization, unitization, forced-pooling, or otherwise) or until a non-standard unit, eliminating such interests, has been approved by the Commission.



CERTIFICATION

I hereby certify that the information contained herein is true and complete to the best of my knowledge and belief.

Name
G. J. Velten

Position
Division Civil Engineer

Company
TEXACO Inc.

Date
6/16/72

I hereby certify that the well location and acreage plotted on this plat was plotted from field notes of actual survey made by me or under my supervision and to the same is true and correct.

RECEIVED
JUN 19 1972
U.S. GEOLOGICAL SURVEY
ARTESIA, NEW MEXICO

Date Surveyed
6/16/72

Registered Professional Engineer and/or Land Surveyor
G. J. Velten

Certificate No.
8174