

UNITED STATES  
DEPARTMENT OF THE INTERIOR  
GEOLOGICAL SURVEY

## APPLICATION FOR PERMIT TO DRILL, DEEPEN, OR PLUG BACK

## 1a. TYPE OF WORK

DRILL ☒ RE-ENTRY DEEPEN ☐ PLUG BACK ☐

## b. TYPE OF WELL

OIL WELL ☒ GAS WELL ☐ OTHER ☐

## 2. NAME OF OPERATOR

Indrex Inc  
OGS Operating Company, Inc.

## 3. ADDRESS OF OPERATOR

2633 E. 63rd. Place Suite 500  
550 W. Texas, Suite 1140 Midland, TX 79701-1987

## 4. LOCATION OF WELL (Report location clearly and in accordance with any State Requirements.)

At surface

1980' FNL &amp; 660' FEL

At proposed prod. zone

Same

## 14. DISTANCE IN MILES AND DIRECTION FROM NEAREST TOWN OR POST OFFICE\*

7.2 miles west of Carlsbad, New Mexico

## 15. DISTANCE FROM PROPOSED\*

LOCATION TO NEAREST  
PROPERTY OR LEASE LINE, FT.  
(Also to nearest drlg. unit line, if any)

660'

## 18. DISTANCE FROM PROPOSED LOCATION\*

TO NEAREST WELL, DRILLING, COMPLETED,  
OR APPLIED FOR, ON THIS LEASE, FT.

None

## 16. NO. OF ACRES IN LEASE

151.58

## 19. PROPOSED DEPTH

5200'

## 21. ELEVATIONS (Show whether DF, RT, GR, etc.)

3471 GL

## 23.

## PROPOSED CASING AND CEMENTING PROGRAM

SIZE OF HOLE	SIZE OF CASING	WEIGHT PER FOOT	SETTING DEPTH	QUANTITY OF CEMENT
existing down-	13 3/8"	48#	490'	500 sx circulated
hole casing	9 5/8"	36#	2175'	950 sx circulated
To be installed:				
8 1/2"	5 1/2"	15.5#	4900'	350 sx "C" to cover back to Delaware zones of interest.

## Mud Program:

0' - 2175' Drill cement plugs: at surface and 2125' - 2225' with fresh water.  
2175 - 5200' Below surface casing, will drill with fresh water and native mud  
to clean up hole and drill out plug at 4400' to 4500'.

## BOP Specification:

Will install and test daily a 3000 psi Schaeffer type E 10" hydraulic BOP.

Former: Indrex Inc. P&amp;A 1982 STI 14860

IN ABOVE SPACE DESCRIBE PROPOSED PROGRAM: If proposal is to deepen or plug back, give data on present productive zone and proposed new productive zone. If proposal is to drill or deepen directionally, give pertinent data on subsurface locations and measured and true vertical depths. Give blowout preventer program, if any.

## 24.

SIGNED

D. George Smith

TITLE

Agent for:

OGS Operating Company, Inc.

DATE May 20, 1987

(This space for Federal or State office use)

PERMIT NO.

APPROVAL DATE

APPROVED BY

Ray. Gir.

TITLE

AREA MANAGER  
CARLSBAD RESOURCE AREA

DATE

6-10-87

CONDITIONS OF APPROVAL, IF ANY:

NEW MEXICO OIL CONSERVATION COMMISSION  
WELL LOCATION AND ACREAGE DEDICATION PLAT

Form C-102  
Supersedes C-128  
Effective 1-1-65

All distances must be from the outer boundaries of the Section.

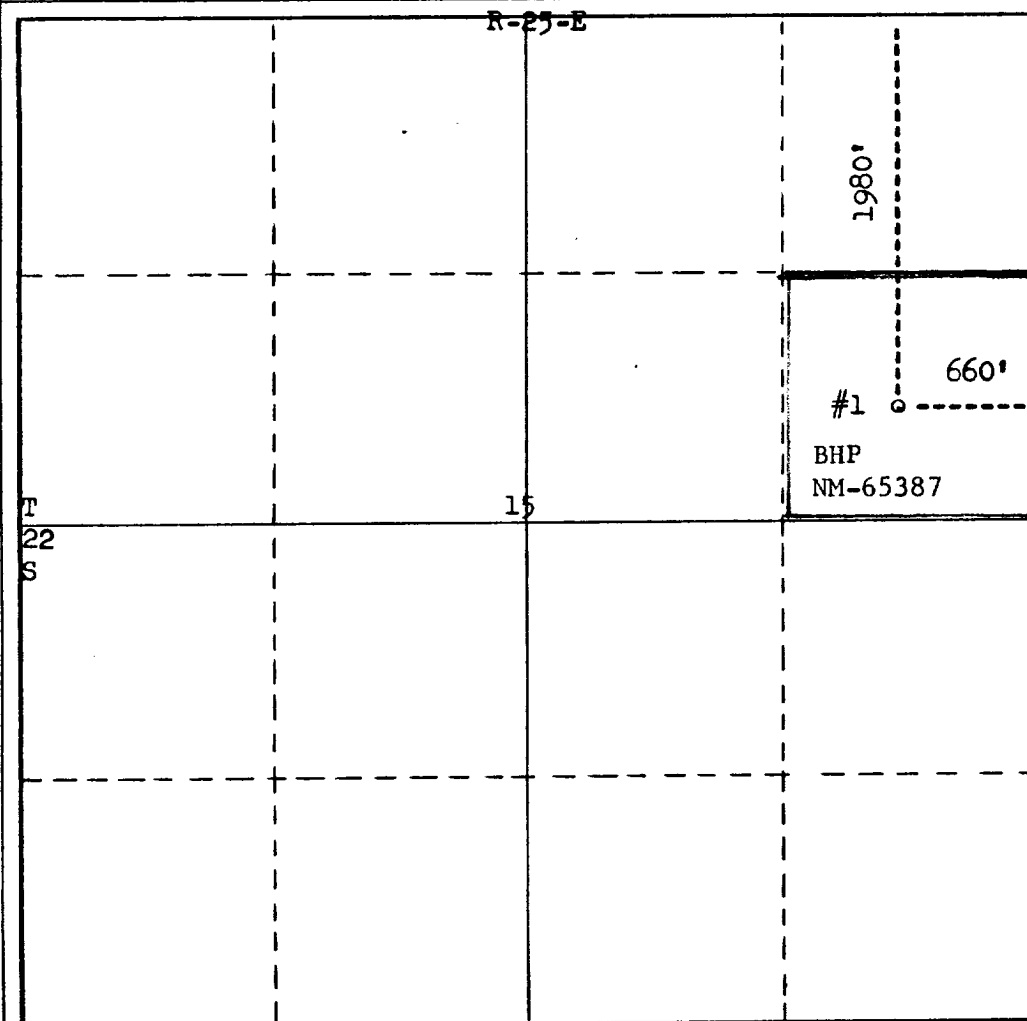
Operator <b>INEXCO OIL CO. Indev. Inc.</b>		Lease <b>Four Forks Unit</b>			Well No. <b>1</b>
Unit Letter <b>H</b>	Section <b>15</b>	Township <b>22 S</b>	Range <b>25 E</b>	County <b>Eddy</b>	
Actual Footage Location of Well: <b>1980</b> feet from the <b>North</b> line and <b>660</b> feet from the <b>East</b> line					
Ground Level Elev. <b>3471</b>	Producing Formation <b>Morrow (re-entry to test Bone Springs)</b>			Dedicated Acreage: <b>640 (40)</b> Acres	

1. Outline the acreage dedicated to the subject well by colored pencil or hatchure marks on the plat below.
2. If more than one lease is dedicated to the well, outline each and identify the ownership thereof (both as to working interest and royalty).
3. If more than one lease of different ownership is dedicated to the well, have the interests of all owners been consolidated by communitization, unitization, force-pooling, etc?

☐ Yes ☐ No If answer is "yes," type of consolidation \_\_\_\_\_

If answer is "no," list the owners and tract descriptions which have actually been consolidated. (Use reverse side of this form if necessary.) \_\_\_\_\_

No allowable will be assigned to the well until all interests have been consolidated (by communitization, unitization, forced-pooling, or otherwise) or until a non-standard unit, eliminating such interests, has been approved by the Commission.



CERTIFICATION

I hereby certify that the information contained herein is true and complete to the best of my knowledge and belief.

Name  
**BERNARD J. MAHONY**  
Position  
**Manager, West Texas & SE New Mexico Prod. Div.**  
Company  
**INEXCO OIL COMPANY**  
Date  
**8-10-72**

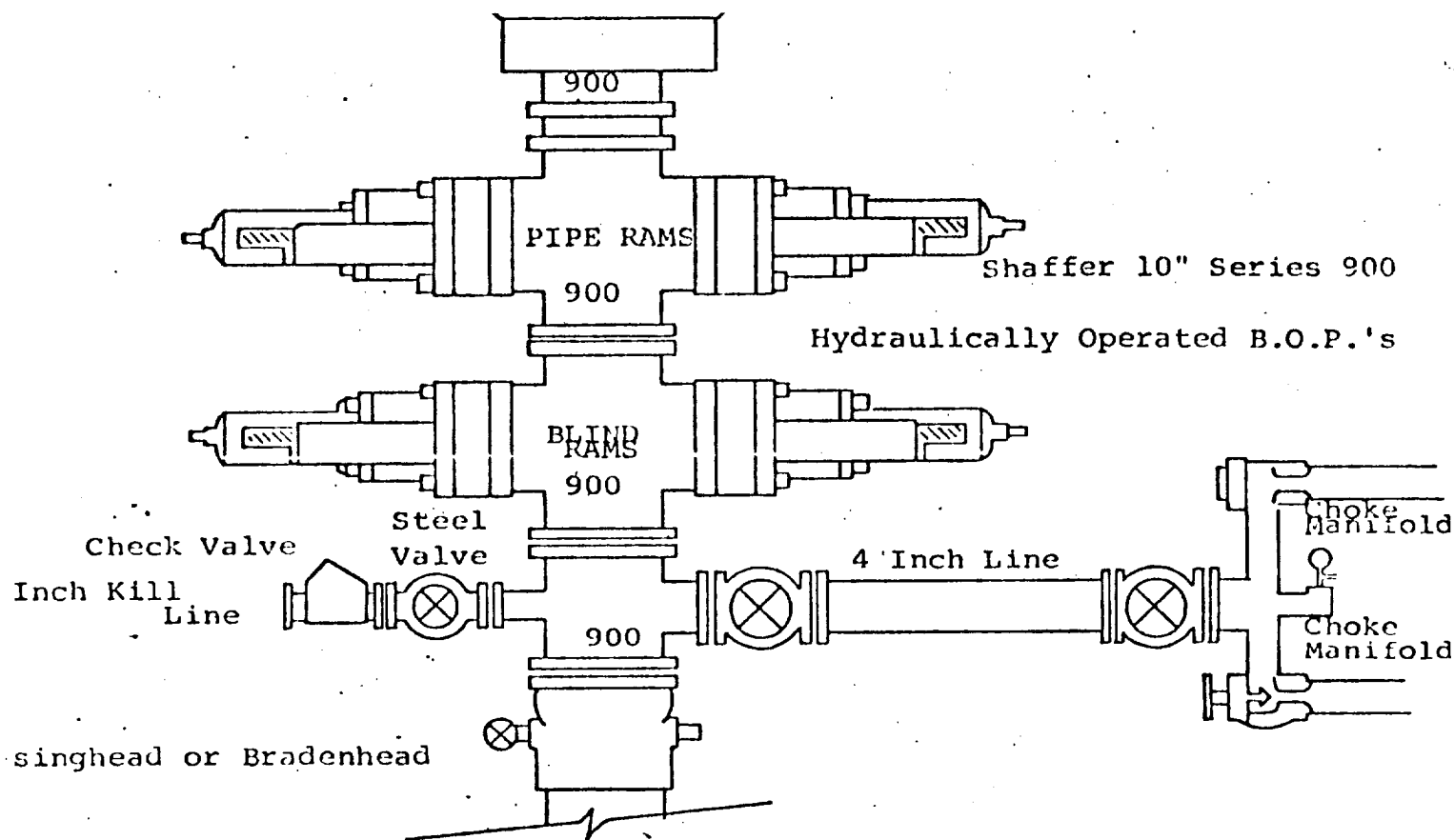
I hereby certify that the well location shown on this plat was plotted from field notes of actual surveys made by me or under my supervision, and that the same is true and correct to the best of my knowledge and belief.

8-8-72

Date Surveyed  
**Aug 14 1972**  
Registered Professional Engineer and of Land Surveyor  
**3280**  
**JOE J. HEWETT, JR.**

Certificate No.

0 330 660 990 1320 1650 1980 2310 2640 2000 1800 1000 500 0



THE FOLLOWING CONSTITUTE MINIMUM BLOWOUT PREVENTER REQUIREMENTS

- All preventers to be hydraulically operated with secondary manual controls installed prior to drilling out from under casing.
- Choke outlet to be a minimum of 4" diameter.
- Kill line to be of all steel construction of 2" minimum diameter.
- All connections from operating manifolds to preventers to be all steel.
- hole or tube a minimum of one inch in diameter.
- The available closing pressure shall be at least 15% in excess of that required with sufficient volume to operate the B.O.P.'s.
- All connections to and from preventer to have a pressure rating equivalent to that of the B.O.P.'s.
- Inside blowout preventer to be available on rig floor.
- Operating controls located a safe distance from the rig floor.
- Hole must be kept filled on trips below intermediate casing. Operator not responsible for blowouts resulting from not keeping hole full.
- D. P. float must be installed and used below zone of first gas intrusion.

Indrex Inc. EXHIBIT "E"  
~~OCS OPERATING COMPANY, INC.~~  
 Four Forks Federal, Well No. 1  
 BOP Specification

APPLICATION FOR DRILLING  
Indrex Inc.  
~~OGS OPERATING COMPANY, INC.~~  
FOUR FORKS Federal, Well No. 1  
1980' FNL & 660' FEL, Sec. 15-T22S-R25E  
Eddy County, New Mexico  
Lease No.: NM-65387  
(Exploratory Re-entry Well)

In conjunction with Form 9-331C, Application for Permit to Drill subject well, OGS Operating Company, Inc. submits the following items of pertinent information in accordance with BLM requirements:

1. The geologic surface formation is recent Permian with quaternary alluvium and other surficial deposits.
2. The estimated tops of geologic markers are as follows:

Capitan Reef	600'	Bone Springs	4320'
Delaware Sand	2105'	T.D.	5200'
3. The estimated depth at which anticipated water, oil or gas formations are expected to encountered:

Water: Random fresh water sands from surface to 300'+/-.

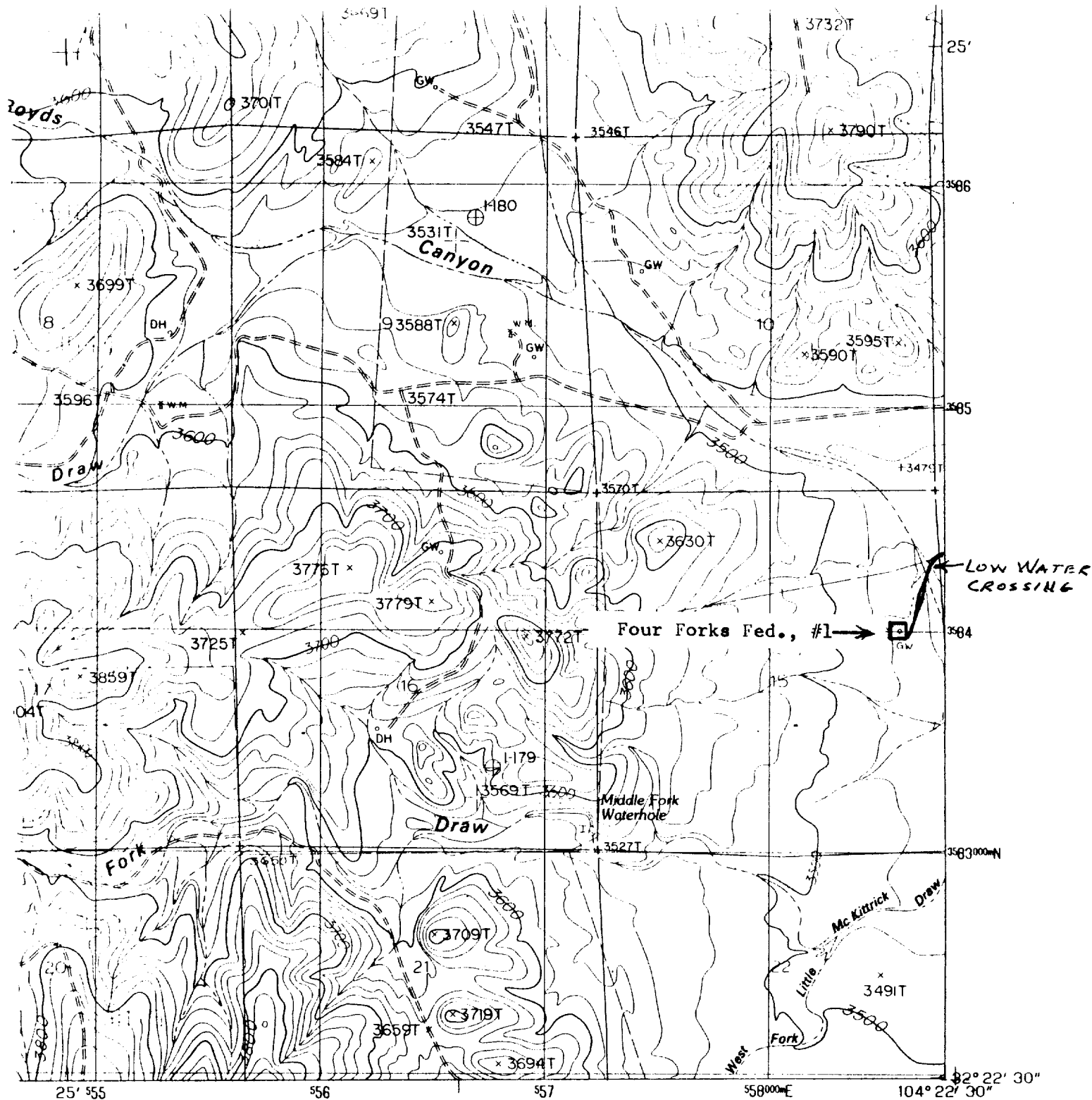
Gas: None expected.

Oil: Possible in Bone Springs at or below 4320'.
4. Proposed Casing Program: See Form 9-331C.
5. Pressure Control Equipment: See Form 9-331C and Exhibit "E".
6. Mud Program: See Form 9-331C.
7. Auxiliary Equipment: Blowout preventer, gas detector, kelly cock, pit level monitor, flow sensors and stabbing valves.
8. Testing, Logging and Coring Program:

Drill Stem Tests: None planned.

Logging: Gamma Ray through casing prior to perforating.

Coring: None.
9. No abnormal pressures or temperatures are anticipated. In the event abnormal pressures are encountered the proposed mud program will be modified to increase the mud weight.
10. Anticipated starting date of re-entry: May 28, 1987  
Anticipated completion of re-entry operations: Two weeks.



#### ROAD LEGEND

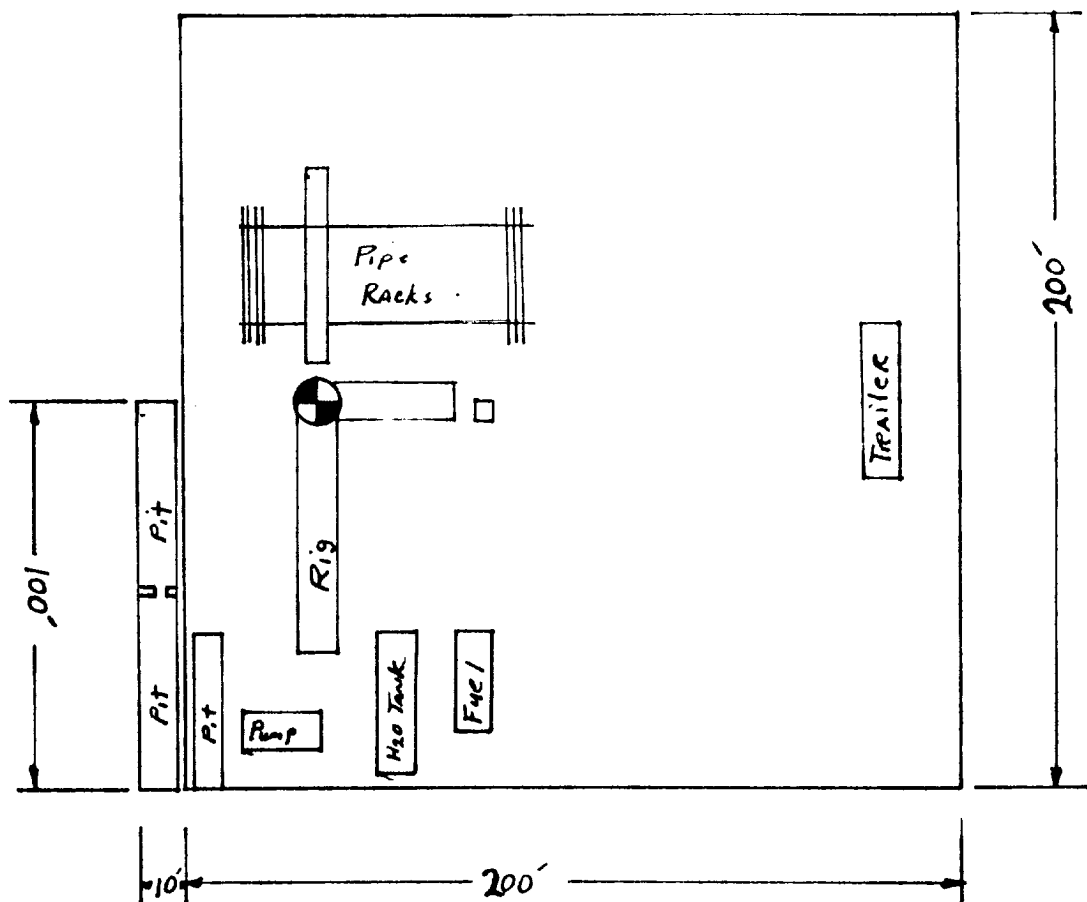
Improved Road .....  
 Unimproved Road .....  
 Trail .....

○ Interstate Route    ○ U.S. Route    ○ State Route

EXHIBIT "B" Indrex Inc.  
~~000 OPERATING COMPANY, INC.~~  
 Four Forks Federal, Well No. 1  
 1980' FNL & 660' FEL, Sec. 15-T22S-R25E  
 Existing Access Road: —

#### AZOTEA PEAK, NEW MEXICO

PROVISIONAL EDITION 1985



Indrex Inc. EXHIBIT "D"  
~~OCS OPERATING COMPANY, INC.~~  
 Four Forks Federal, Well No. 1  
 Rig Layout