

MEXICO OIL CONSERVATION COMMIS.
WELL LOCATION AND ACREAGE DEDICATION PLAT

Form C-102
Supersedes C-128
Effective 1-1-65

All distances must be from the outer boundaries of the Section.

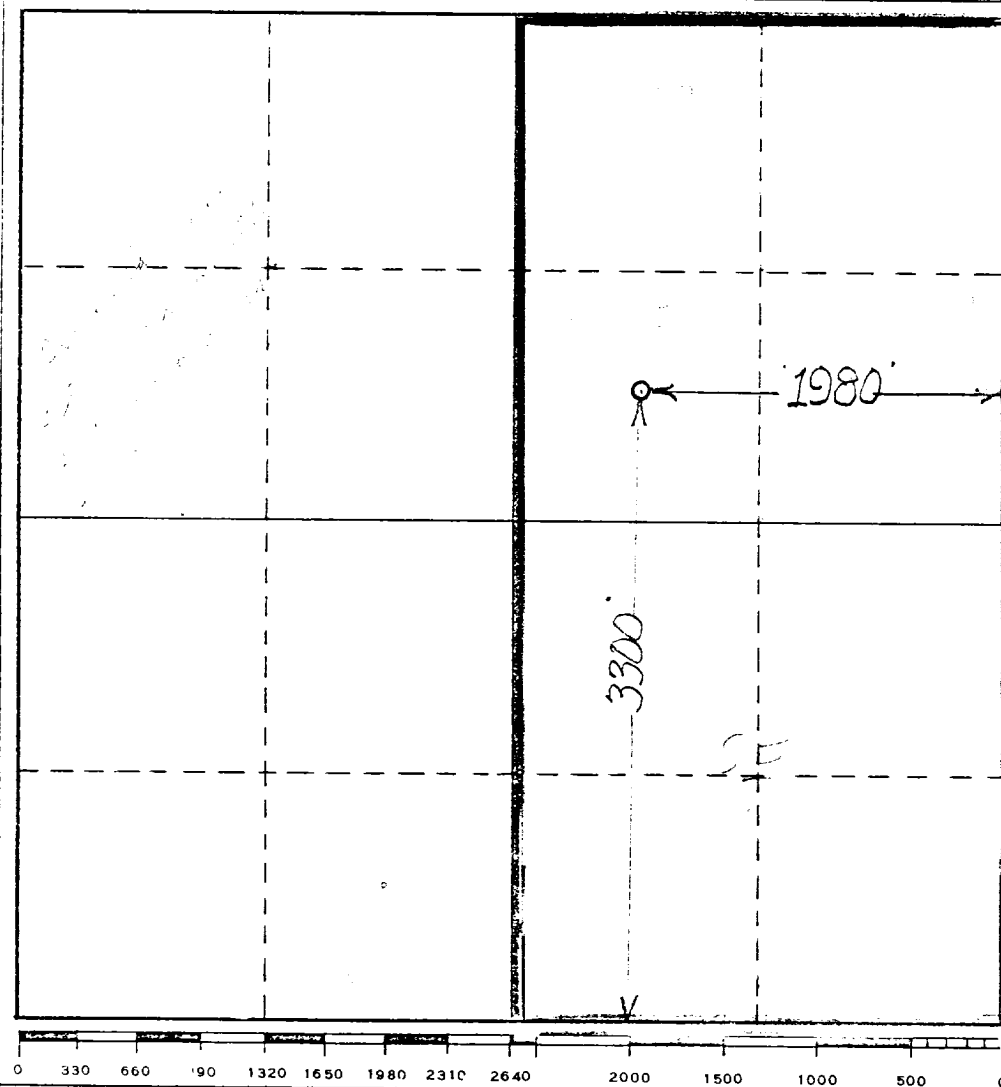
| | | | | | |
|---|--------------------------------------|-----------------------------|---------------------------------------|--|----------------------|
| Owner MONSANTO COMPANY | | | Lease Burton Flat Deep Unit | | Well No. 1 |
| Section 30 | Section 3 | Township 21 South | Range 27 East | County Eddy | |
| Actual True Location of Well: 3300 feet from the South line and 1980 feet from the East line | | | | | |
| Ground Level Elev. Morrow | Producing Formation Morrow | Pool Widest | | Dedicated Acreage: 320 Acres | |

1. Outline the acreage dedicated to the subject well by colored pencil or hachure marks on the plat below.
2. If more than one lease is dedicated to the well, outline each and identify the ownership thereof (both as to working interest and royalty).
3. If more than one lease of different ownership is dedicated to the well, have the interests of all owners been consolidated by communitization, unitization, force-pooling, etc?

☐ Yes ☐ No If answer is "yes," type of consolidation _____

If answer is "no," list the owners and tract descriptions which have actually been consolidated. (Use reverse side of this form if necessary.) _____

No allowable will be assigned to the well until all interests have been consolidated (by communitization, unitization, forced-pooling, or otherwise) or until a non-standard unit, eliminating such interests, has been approved by the Commission.



CERTIFICATION

I hereby certify that the information contained herein is true and complete to the best of my knowledge and belief.

Name
A. W. Wood
Position
District Production Manager
Company
Monsanto Company
Date
August 14, 1972

RECEIVED
AUG 15 1972
I hereby certify that the location shown on this plat was plotted from field notes of actual surveys made by me or under my supervision, and that the same is true and correct to the best of my knowledge and belief.

Date Surveyed
Aug 14, 1972
Registered Professional Engineer and/or Land Surveyor
[Signature]
Certificate No.
1652