

MEXICO OIL CONSERVATION COMMISSION
WELL LOCATION AND ACREAGE DEDICATION PLAT

RECEIVED
 Form C-122
 Supersedes C-122
 Effective 1-1-55

JUN 26 1973 *Copy to SF*

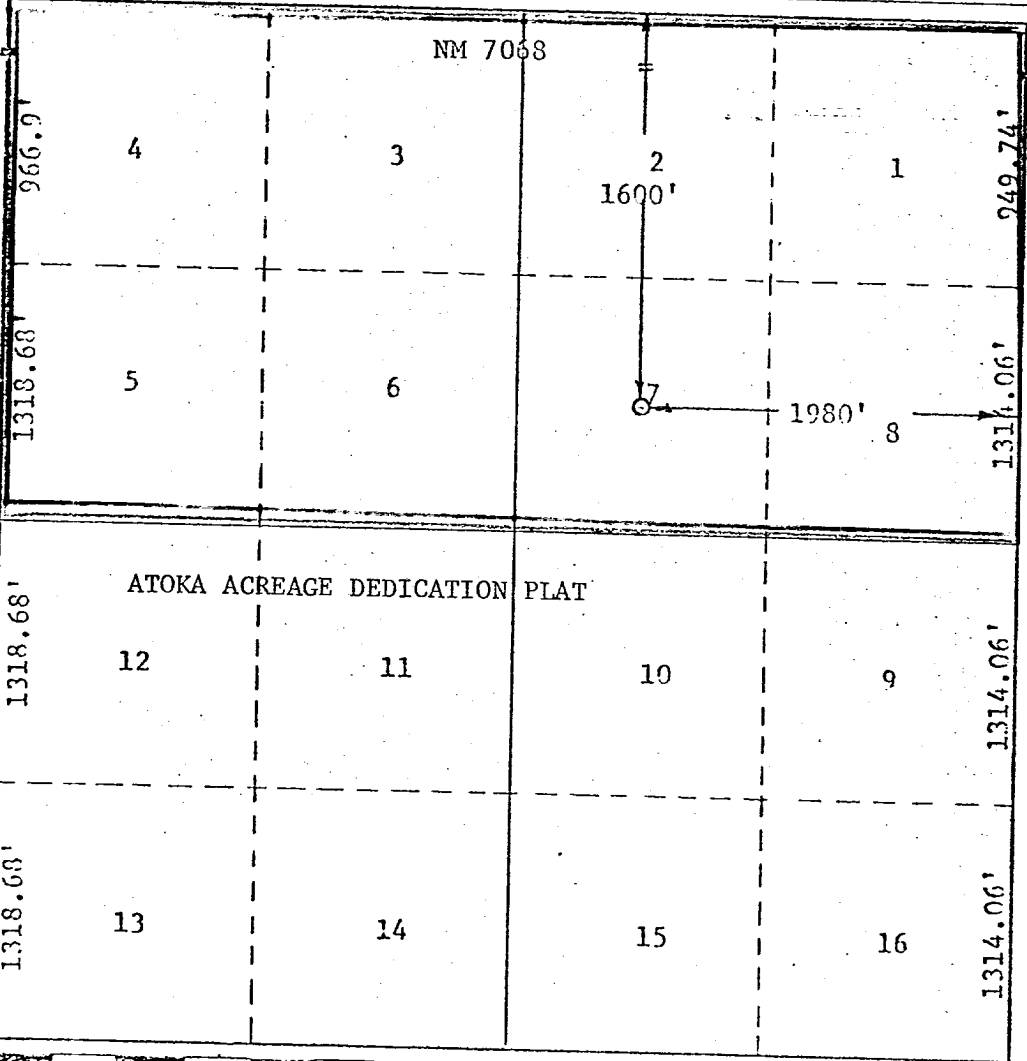
All distances must be from the outer boundaries of the Section.

Operator MONSANTO COMPANY				Lease MILLER FEDERAL		Well No. 1	
Unit Letter G	Section 3	Township 21-S	Range 27-E	County O. C. C. ARTESIA, OFFICE			
Actual Footage Location of Well: 1600 feet from the North line and 1980 feet from the East line Ground Level Elev. 1600 Producing Formation ATOKA Pool BURTON FLAT - ATOKA Dedicated Acreage: 276.5 Acres							

1. Outline the acreage dedicated to the subject well by colored pencil or hachure marks on the plat below.
2. If more than one lease is dedicated to the well, outline each and identify the ownership thereof (both as to working interest and royalty).
3. If more than one lease of different ownership is dedicated to the well, have the interests of all owners been consolidated by communitization, unitization, force-pooling, etc?
☐ Yes ☐ No If answer is "yes," type of consolidation _____

If answer is "no," list the owners and tract descriptions which have actually been consolidated. (Use reverse side of this form if necessary.) _____

No allowable will be assigned to the well until all interests have been consolidated (by communitization, unitization, forced-pooling, or otherwise) or until a non-standard unit, eliminating such interests, has been approved by the Commission.



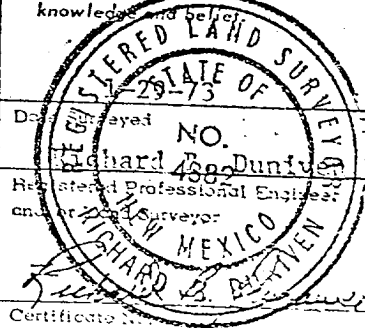
CERTIFICATION

I hereby certify that the information contained herein is true and complete to the best of my knowledge and belief.

A. W. Wood

Name A. W. Wood
Position Dist. Prod. Manager
Company MONSANTO COMPANY
Date June 25, 1973

I hereby certify that the well location shown on this plat was plotted from field notes of actual surveys made by me or under my supervision, and that the same is true and correct to the best of my knowledge and belief.



4882

- Approx. 1 1/2 Mile -