

MEXICO OIL CONSERVATION COMMISSION
WELL LOCATION AND ACREAGE DEDICATION PLAT

Form C-102
Supersedes C-128
Effective 1-1-65

All distances must be from the outer boundaries of the Section.

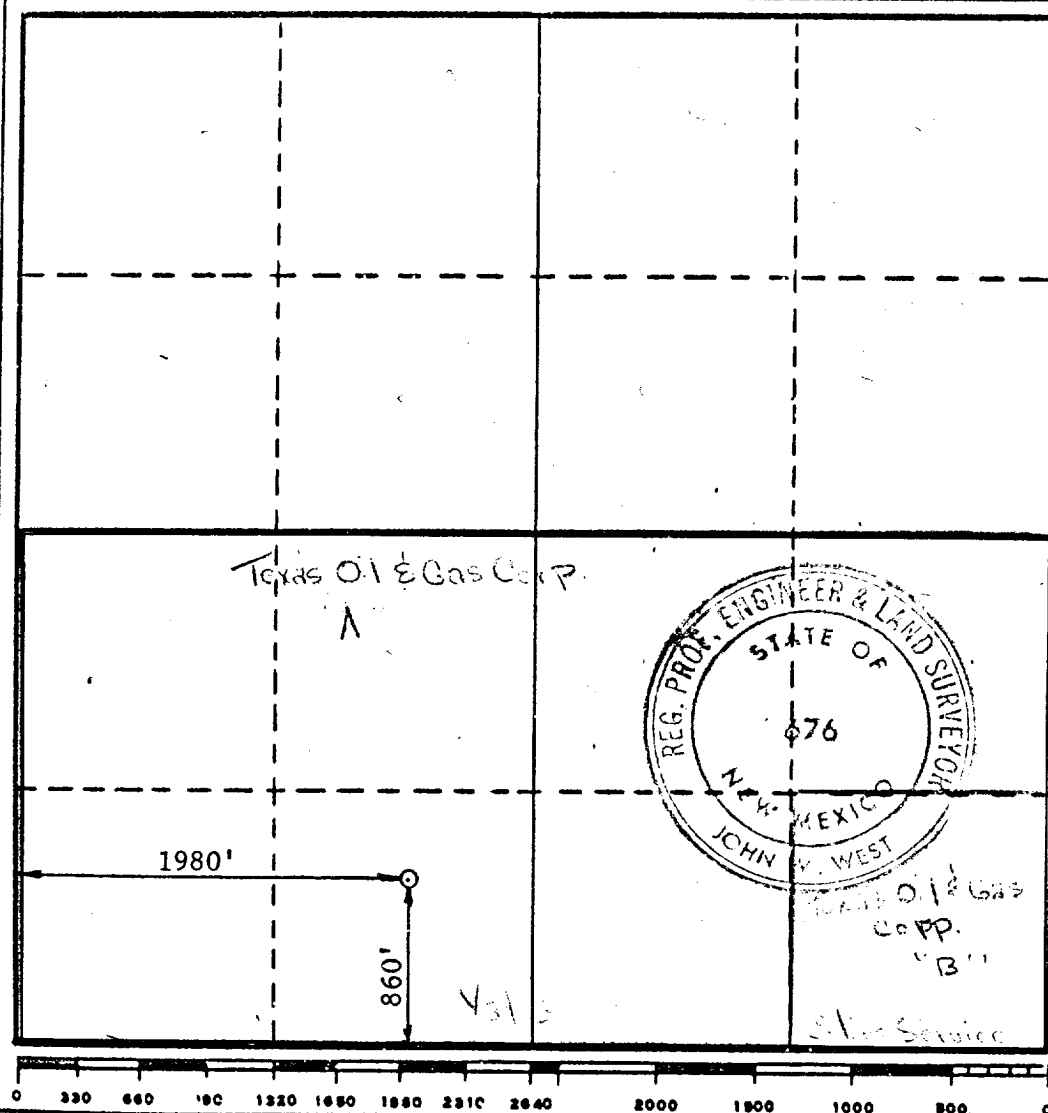
Operator TEXAS OIL & GAS CORP.			Lease YATES FEDERAL		Well No. 1
Unit Letter N	Section 8	Township 20 SOUTH	Range 29 EAST	County EDDY	
Actual Footage Location of Well: 860 feet from the SOUTH line and 1980 feet from the WEST line					
Ground Level Elev. 3270	Producing Formation Strawn	Pool Burton Flat	Dedicated Acreage: 320 Acres		

1. Outline the acreage dedicated to the subject well by colored pencil or hachure marks on the plat below.
2. If more than one lease is dedicated to the well, outline each and identify the ownership thereof (both as to working interest and royalty).
3. If more than one lease of different ownership is dedicated to the well, have the interests of all owners been consolidated by communitization, unitization, force-pooling, etc?

☒ Yes ☐ No If answer is "yes," type of consolidation unitization

If answer is "no," list the owners and tract descriptions which have actually been consolidated. (Use reverse side of this form if necessary.)

No allowable will be assigned to the well until all interests have been consolidated (by communitization, unitization, forced-pooling, or otherwise) or until a non-standard unit, eliminating such interests, has been approved by the Commission.



CERTIFICATION

I hereby certify that the information contained herein is true and complete to the best of my knowledge and belief.

Name John W. West
Position REGISTERED PROFESSIONAL ENGINEER
Company TEXAS OIL & GAS CORP.
Date 7-30-73

I hereby certify that the well location shown on this plat was plotted from field notes of actual surveys made by me or under my supervision, and that the same is true and correct to the best of my knowledge and belief.

Date Surveyed JULY 26, 1973
Registered Professional Engineer and/or Land Surveyor John W. West
Certificate No. 676

RECEIVED

FEB 26 1974

D. C. C.
ARTERIA, OFFICE